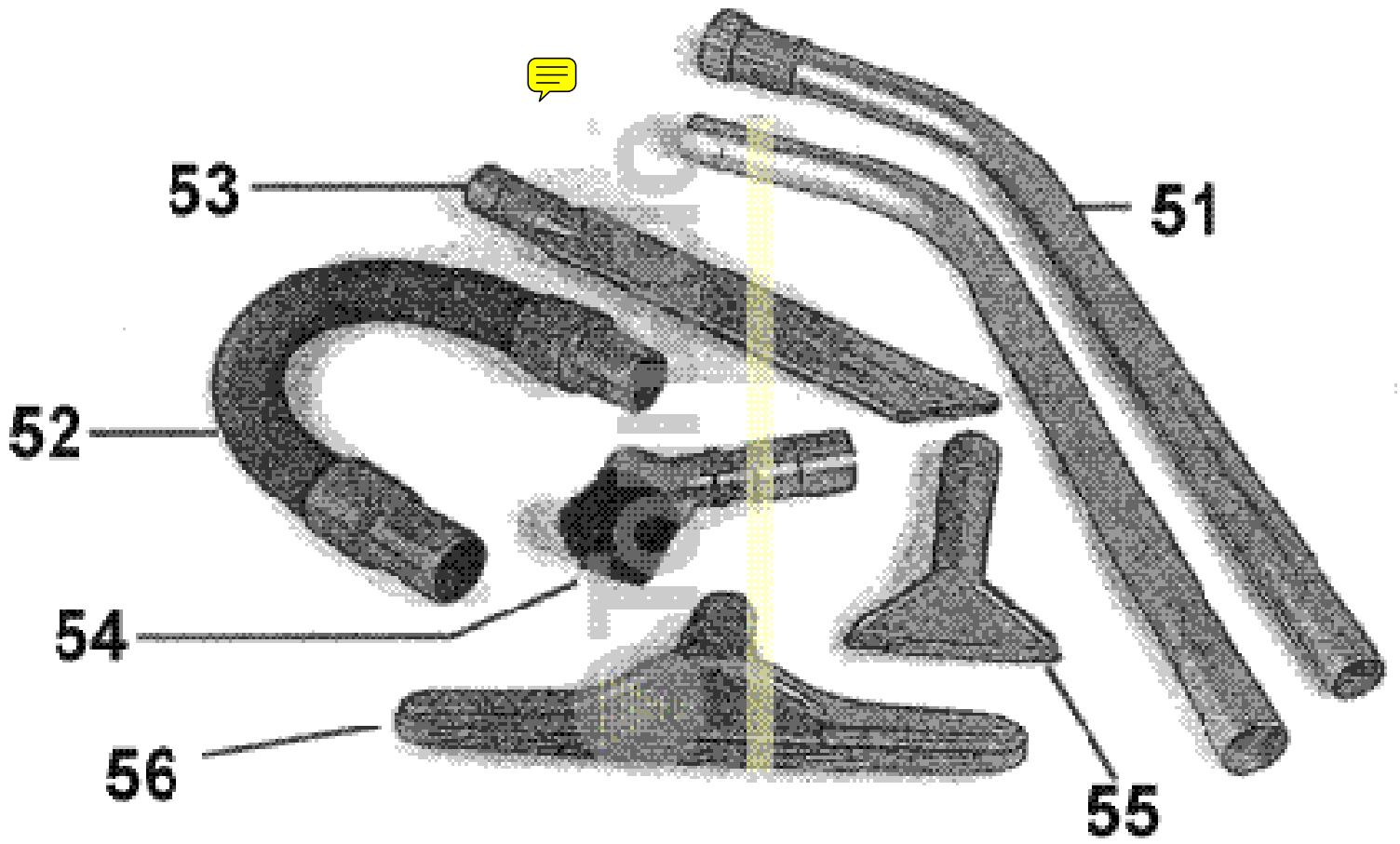
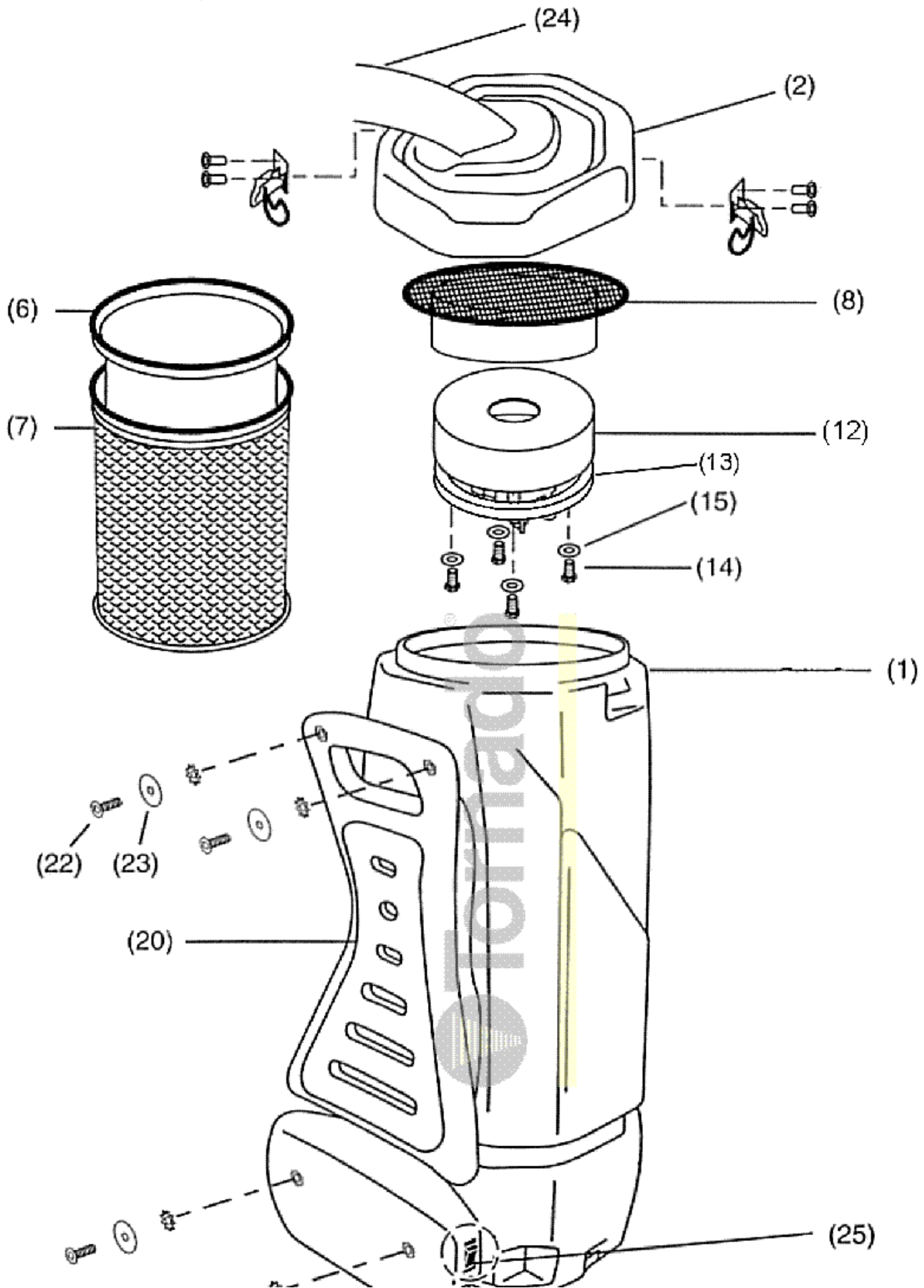
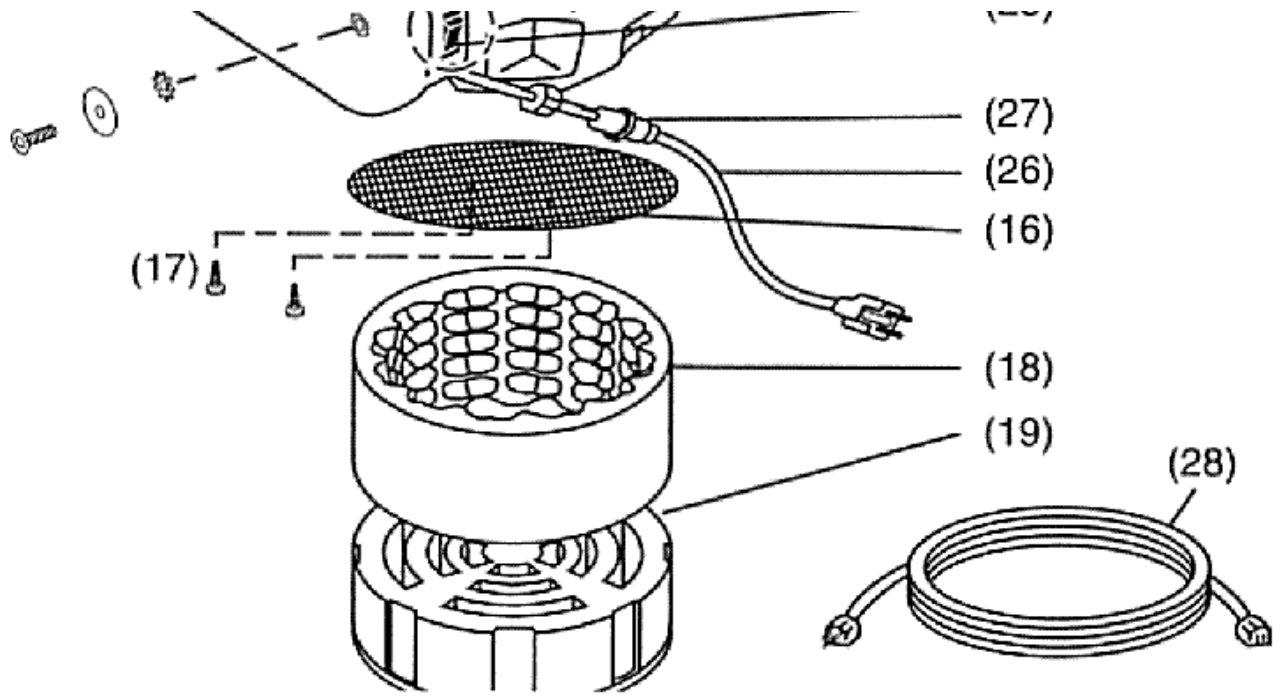
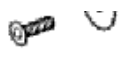


No.	Number	Qty	Description
1	31985	1	VAC-BODY 6QT W/GRAPHICS YELLOW-BACK PACK
2	31986	1	LID 6 QT. SCREW ON ON YELLOW/BACK PACK
6	90575	1	FILTER-PAPER BAG 6QT (10PKG) BACK PACK
7	31864	1	FILTER-CLOTH BAG 6QT BACK PACK GREY
8	31871	1	FILTER-DOME ASS'Y BACK PACK
12	31882	1	VAC-MOTOR 120V 1.125STK BACK PACK
13	30089	1	GASKET-MOTOR (POLY FOAM) (93030-) .188W/ADHESIVE
14	32161	4	SCREW-PHIL. PAN HD.TAPT #10-32 X 3/4 (ZP)
15	18885	4	WASHER-PLAIN 1/4 ID (SS)
16	31923	1	DEFLECTOR-MOTOR(PERFOR). 10 QT 22GA. X 5/32
17	10886	2	SCREW-PHIL. PAN HD TAPT #10-24 X 3/8 (ZP)
18	31872	1	FILTER-SOUND BAND BACK PACK
19	31873	1	FILTER-DUAL CELL NOISE BACK PACK
20	31874	1	CUSHION BACK PAD BACK PACK
21	31875	1	BAND-SHOULDER & WAIST BACK PACK
22	16142	4	SCREW-PHIL. PAN HD MACH #10-32 X 1/2 (ZP)
23	32165	4	WASHER-PLAIN #10 I.D. (ZP)
24	31867	1	HOSE-POLYETHYLENE (BLK) 1-1/2 X 52 W/CUFFS
25	10670	1	SWITCH ROCKER (98164-68)
26	31956	1	ASS'Y PIGTAIL & STRAIN RELIEF (BACK PACK)
27	31877	1	STRAIN RELIEF PIGTAIL W/ NUT (BLK) 3/8 NPT
28	31866	1	EXTENSION CORD 16/3 50' YELLOW MALE/BACK PACK



No.	Number	Qty	Description
51	31915	1	ASSY-WAND ALUM (2 PCS) PUSH BUTTON W/COUPLER
52	31867	1	HOSE-POLYETHYLENE (BLK) 1-1/2 X 52 W/CUFFS
53	90004	1	TOOL-HAND(1-1/2)PLASTIC CREVICE(15)
54	90712	1	TOOL-DUSTING RND(1-1/2) (94220 225) POLY BRISTLE
55	90711	1	TOOL-UPHOLSTERY(1-1/2) (94220,225) PACKAGED
56	31663	1	SCALLOPED CARPET TOOL 14" 14 (ABS)
	31972		TOOL 1-1/2 14 (ABS) EASY GLIDE





No.	Number	Qty	Description
1	31878	1	VAC-BODY 10QT W/GRAPHICS YELLOW-BACK PACK
2	31879	1	LID(NO THRD YEL BACKPACK
6	90557	1	FILTER-PAPER BAG 10QT (10PKG) BACK PACK
7	31865	1	FILTER-CLOTH BAG 10QT BACK PACK GREY
8	31871	1	FILTER-DOME ASS'Y BACK PACK
12	31882	1	VAC-MOTOR 120V 1.125STK BACK PACK
13	30089	1	GASKET-MOTOR (POLY FOAM) (93030-) .188W/ADHESIVE
14	32161	4	SCREW-PHIL. PAN HD.TAPT #10-32 X 3/4 (ZP)
15	18885	4	WASHER-PLAIN 1/4 ID (SS)
16	31923	1	DEFLECTOR-MOTOR(PERFOR). 10 QT 22GA. X 5/32
17	10886	2	SCREW-PHIL. PAN HD TAPT #10-24 X 3/8 (ZP)
18	31872	1	FILTER-SOUND BAND BACK PACK
19	31873	1	FILTER-DUAL CELL NOISE BACK PACK
20	31874	1	CUSHION BACK PAD BACK PACK
21	31875	1	BAND-SHOULDER & WAIST BACK PACK
22	16142	4	SCREW-PHIL. PAN HD MACH #10-32 X 1/2 (ZP)
23	32165	4	WASHER-PLAIN #10 I.D. (ZP)
24	31867	1	HOSE-POLYETHYLENE (BLK) 1-1/2 X 52 W/CUFFS
25	10670	1	SWITCH ROCKER (98164-68)
26	31956	1	ASS'Y PIGTAIL & STRAIN RELIEF (BACK PACK)
27	31877	1	STRAIN RELIEF PIGTAIL W/ NUT (BLK) 3/8 NPT
28	31866	1	EXTENSION CORD 16/3 50' YELLOW MALE/BACK PACK