

CARPETWIN

MODEL 140

THIS PARTS LIST IS FOR 115 VOLT
MACHINES AFTER SERIAL NO. 053103

PARTS LIST



ADVANCE
MACHINE COMPANY

INTERNATIONAL HEADQUARTERS, Spring Park, Minnesota 55384-0275

EUROPE, 4 Rue Jean Engling, L-1466 Luxembourg

CANADA, 1295 Crestlawn Drive, Mississauga, Ontario L4W 1A9

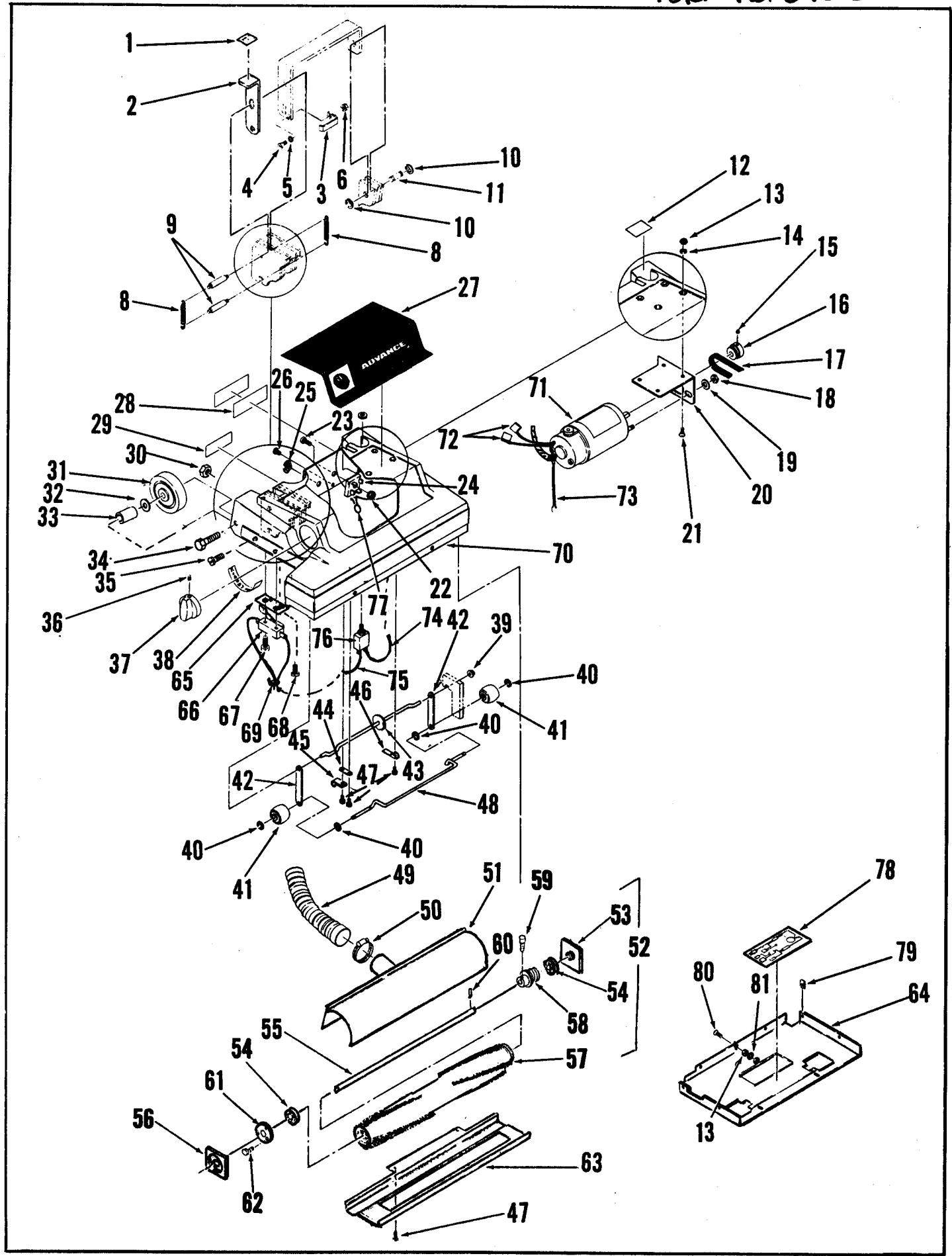
© 1985 Advance Machine Co.

FORM NO. 042 126 3/85



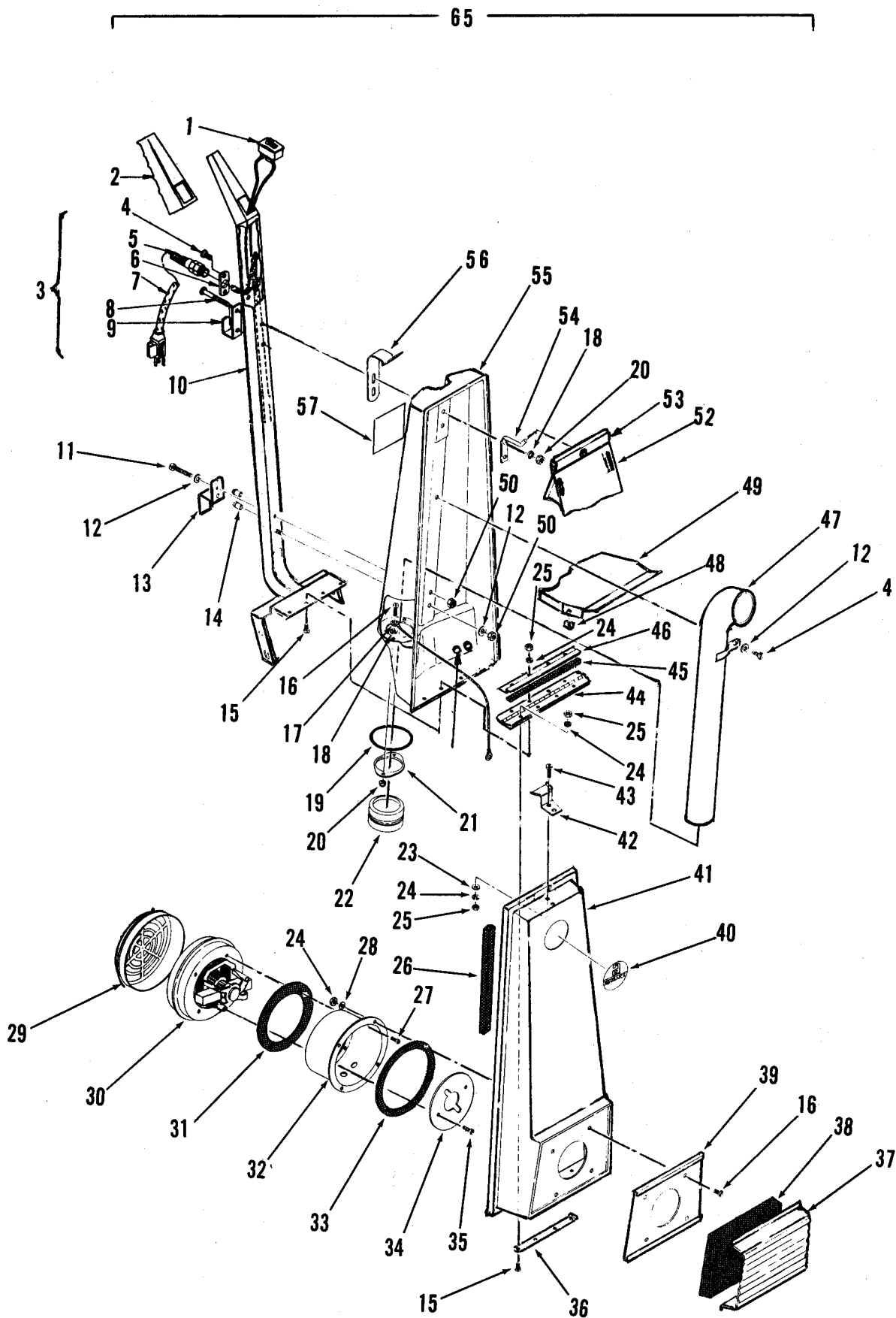
INDEX FOR FORM NUMBER 042126

<u>Description</u>	<u>Location</u>	<u>Page</u>
Bag Housing	D1	3
Base	C12	1
Motor, Vacuum	D3	5
Wiring Diagram	D4	6



BASE ASSEMBLY

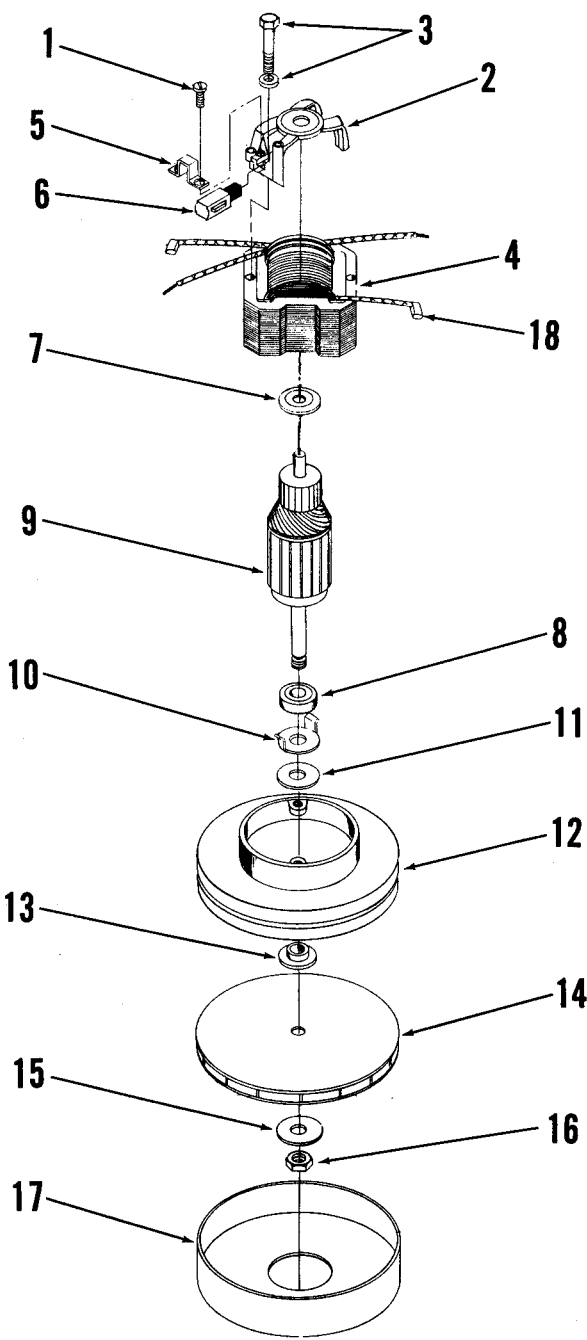
ITEM	PART NO.	QTY.	DESCRIPTION	ITEM	PART NO.	QTY.	DESCRIPTION
1	014 084	1	DECAL, RELEASE	66	388 019	1	SWITCH, SNAP SPST
2	329 544	1	PEDAL	67		2	SCREW, #6-32 X .88
3	329 536	1	BRACKET, SWITCH	68		2	SCREW, #6-32 X 1/2
4		1	SCREW, #8-32 X 3/8	69	478 246	2	CABLE TIE
5		1	WASHER, SHAKEPROOF #8	70	329 524	1	HOUSING
6		1	NUT, HEX WHIZ #8-32	71	329 530	1	MOTOR, 1/10 H.P. 100V DC
7	329 596	1	PIN .250 X 2.00 (NOT SHOWN)	72	244 838	2	RECEPTACLE, FLAG
8	445 177	2	SPRING, EXTENSION	73	329 552	1	WIRE ASSEMBLY #14 X 9.00
9	329 556	2	PIN, PIVOT	74	329 566	1	WIRE ASSEMBLY #14 X 4.00
10	321 427	2	RING, RETAINING	75	329 564	1	WIRE ASSEMBLY #14 X 15.00
11	477 902	1	PIN, 3/8 X 1 1/16	76	329 630	1	CIRCUIT BREAKER 1.2A 115V
12	014 074	1	DECAL, RESET	77	387 554	1	VARISTOR ASSEMBLY
13		6	NUT, HEX #10-24	78	014 070	1	WIRING DECAL 115V
14		4	WASHER, LOCK #10	79	329 575	6	NUT, SPRING #8
15		1	SET SCREW 1/4-20 X 3/8	80		1	SCREW, #10-24 X 1/2
16	329 644	1	SHEAVE	81	203 874	2	WASHER, .193 X .875 X .06
17	329 686	1	BELT				
18		2	NUT, ACORN #10-32				
19		2	WASHER, SAE #10				
20	329 688	1	MOUNT, MOTOR				<u>BRUSH DRIVE MOTOR PARTS</u>
21		4	SCREW, #10-24 X 3/8				(NOT SHOWN)
22		1	NUT, HEX WHIZ #10-24	329 655	1	CARBON BRUSH/SPRING KIT	
23	329 060	1	SCREW, NYLON #10-24 X 3/4	329 651	2	CARBON BRUSH CAP	
24	180 162	1	RECTIFIER, 35A				
25	163 015	1	STRAIN RELIEF				
26		2	SCREW, #8 X 1/2 S.T.				
27	014 066	1	DECAL, ADVANCE				
	014 069	1	UNDERLAY DECAL				
28	015 324	1	NAMEPLATE, ADVANCE				
29	015 379	1	DECAL, WARNING				
30		1	NUT, WHIZ HEX 1/4-20				
31	324 499	2	WHEEL 3.00 X .781				
32	150 142	2	WASHER				
33	329 585	2	BUSHING				
34	329 614	2	SCREW, 1/4-20 X 1 1/2				
35		4	SCREW, #8 X 1/2 S.T.				
36		1	SCREW, #8-32 X 1/4				
37	324 504	1	KNOB				
38	021 106	1	DECAL, BRUSH ADJUSTMENT				
39	290 935	3	CAP, STUD 1/4				
40	321 125	6	RING, RETAINING EXT. 1/4				
41	329 554	2	ROLLER				
42	329 517	2	LINK, ROLLER				
43	329 547	1	CRANKSHAFT				
44	329 514	3	RETAINER, SHAFT				
45	300 152	1	CLAMP, CORD				
46	329 512	1	RATCHET				
47	329 623	11	SCREW, S/T #8-16 X .62				
48	329 563	1	AXEL				
49	329 560	1	HOSE, VAC 2.00 X 14.50				
50	440 213	1	CLAMP, HOSE				
51	329 532	1	INSERT, BRUSH				
52	329 690	1	BRUSH ASSEMBLY				
53	329 684	1	BLOCK, BEARING				
54	290 283	2	BEARING, BALL				
55	329 674	1	SHAFT, BRUSH				
56	329 682	1	BLOCK, BEARING				
57	329 672	1	BRUSH, TURBULATOR				
58	329 678	1	SHEAVE				
59		2	SCREW, CAP #8-32 X 3/8				
60	200 999	1	PIN, GROOVE				
61	329 680	1	CAP				
62		3	SCREW, S/T #6 X 1/2				
63	329 572	1	SHOE				
64	329 540	1	PAN, BOTTOM				
65	329 058	1	BRACKET, SWITCH				



HANDLE ASSEMBLY

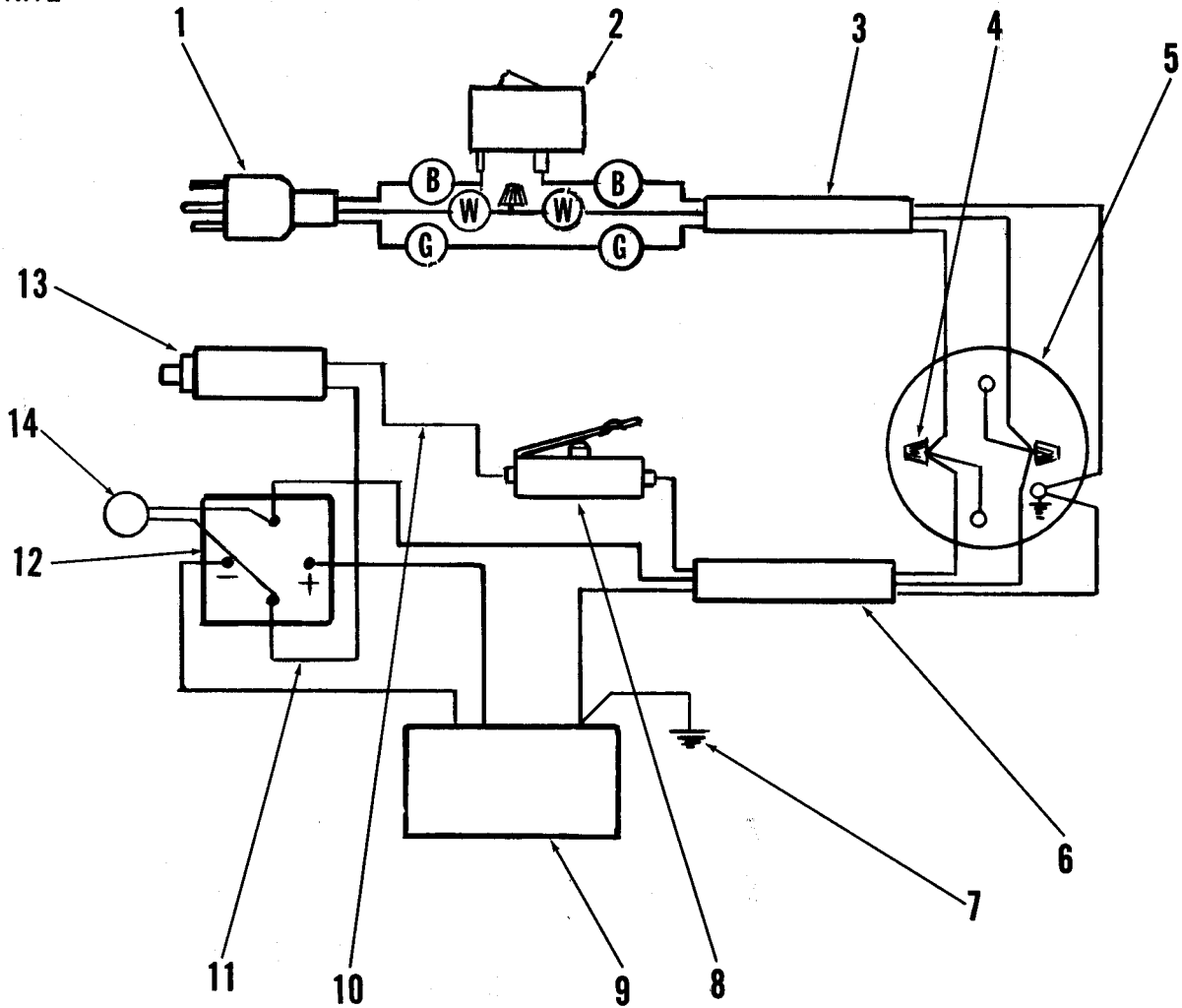
ITEM	PART NO.	QTY.	DESCRIPTION
1	325 140	1	SWITCH, ROCKER
2	585 099	1	GRIP, HANDLE
3	580 465	1	CORD SET ASSEMBLY
4		6	SCREW, #10-32 X 1/2
5	162 736	1	STRAIN RELIEF
6	322 027	1	PLATE
7	580 472	1	CORD SET
8		2	SCREW, HP-5 #10-24 X 1 3/4
9	325 168	1	HOOK, CORD
10	329 802	1	HANDLE
11		1	SCREW, #10-24 X 1 3/4
12		3	WASHER, FLAT #10
13	325 166	1	HOOK, CORD
14	361 321	2	CATCH, BULLET
15		4	SCREW, #6-32 X 1/2
16		6	SCREW, #10-24 X 1/2
17	325 240	1	WIRE ROPE ASSEMBLY
18		5	WASHER, LOCK #10
19	325 157	1	O-RING
20		4	NUT, ACORN #10-24
21	325 160	1	PLATE
22	330 088	1	CUFF, HOSE
23		2	WASHER, FLAT #6
24		10	WASHER, LOCK #6
25		10	NUT, HEX #6-32
26	385 248	72"	GASKET
27		4	SCREW, HP-5 #10-24 X 1/2
28		6	WASHER, SHAKEPROOF #10
29	384 898	1	FILTER
30	325 096	1	MOTOR, VAC
31	209 325	1	GASKET
32	325 120	1	CUP, VAC MOTOR
33	325 148	1	GASKET
34	325 332	1	BAFFLE
35		3	SCREW, #10-24 X 3/8
36	325 208	1	PLATE
37	329 588	1	DEFLECTOR, AIR
38	329 584	1	FILTER
39	329 586	1	PLATE, FILTER
40	014 072	1	DECAL, ADVANCE
41	329 594	1	HOUSING, FRONT
42	325 250	1	LATCH, STRIKE
43		4	SCREW #6-32 X 3/8
44	329 642	1	HINGE
45	385 448	10"	GASKET
46	329 576	1	PLATE, HANDLE
47	325 162	1	TUBE
48	322 504	2	NUT, SPRING #6-32
49	329 590	1	SUPPORT, BAG
50		5	NUT, HEX #10-24
51	320 319	4	BUSHING, NYLON
52	324 530	1	BAG, CLOTH
	324 531	1	BAG, DISPOSABLE
53	320 676	1	CLAMP, BAG
54	325 164	1	HOOK, BAG
55	329 592	1	HOUSING, BACK
56	329 608	1	LATCH
57	015 314	1	DECAL, WARNING
58	162 981	4	STRAIN RELIEF (NOT SHOWN)
59	325 219	1	CABLE TIE (NOT SHOWN)
60	321 737	4	WIRE NUT CONNECTOR (NOT SHOWN)
61	320 099	16"	GASKET (NOT SHOWN)
62		1	SCREW, #10-24 X 1 3/4 (NOT SHOWN)
63	329 568	1	CORD ASSY. (NOT SHOWN)
64	329 808	1	CORD SET ASSY. (NOT SHOWN)
65	329 625	1	HANDLE ASSEMBLY 115V

VACUUM MOTOR



ITEM	PART NO.	QTY.	DESCRIPTION
1	203 263	4	SCREW
2	300 406	1	BRACKET, COMMUTATOR END
3	325 090	2	SCREW & WASHER
4	228 377	1	FIELD
5	207 285	2	CLAMP
6	203 518	2	BRUSH MECHANISM
7	228 388	1	WASHER, FIBER
8	228 051	1	BEARING, BALL
9	325 084	1	ARMATURE
10	203 471	1	WASHER, CLAMPING
11	202 630	1	WASHER, FELT
12	325 094	1	SHELL & BRACKET ASSY.
13	203 424	1	SPACER
14	208 191	1	FAN, ROTATING
15	203 432	1	WASHER
16	203 440	1	NUT
17	325 088	1	SHELL, FAN
18	203 584	2	CLIP, FIELD

B - BLACK
G - GREEN
W - WHITE



ELECTRICAL SCHEMATIC

ITEM	PART NO.	QTY.	DESCRIPTION
1	580 465	1	CORD SET ASSEMBLY
2	325 140	1	SWITCH, ROCKER SPST
3	329 808	1	CORD ASSEMBLY #18/3 X 46
4	321 737	4	CONNECTOR, WIRE NUT
5	325 096	1	MOTOR, VACUUM
6	329 568	1	CORD ASSEMBLY #18/3 X 39
7	329 552	1	WIRE ASSEMBLY #14 X 9
8	388 019	1	SWITCH, SNAP SPST N.C.
9	329 530	1	MOTOR, 1/10 HP 100 V.D.C.
10	329 564	1	WIRE ASSEMBLY #14 X 15.00
11	329 566	1	WIRE ASSEMBLY #14 X 4.00
12	180 162	1	RECTIFIER 35A
13	329 630	1	CIRCUIT BREAKER 1.2A
14	387 554	1	VARISTOR ASSEMBLY