

CARPETWIN 14"

MODEL 140

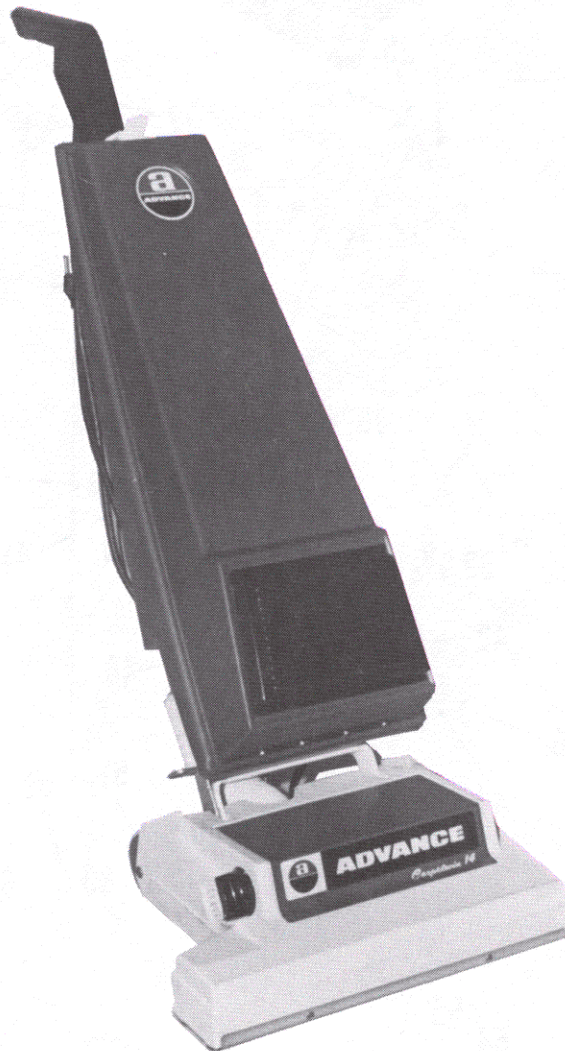
140-5

SERIAL NO. 92811

FORM NO. 042101

NOVEMBER 1983

PARTS LIST



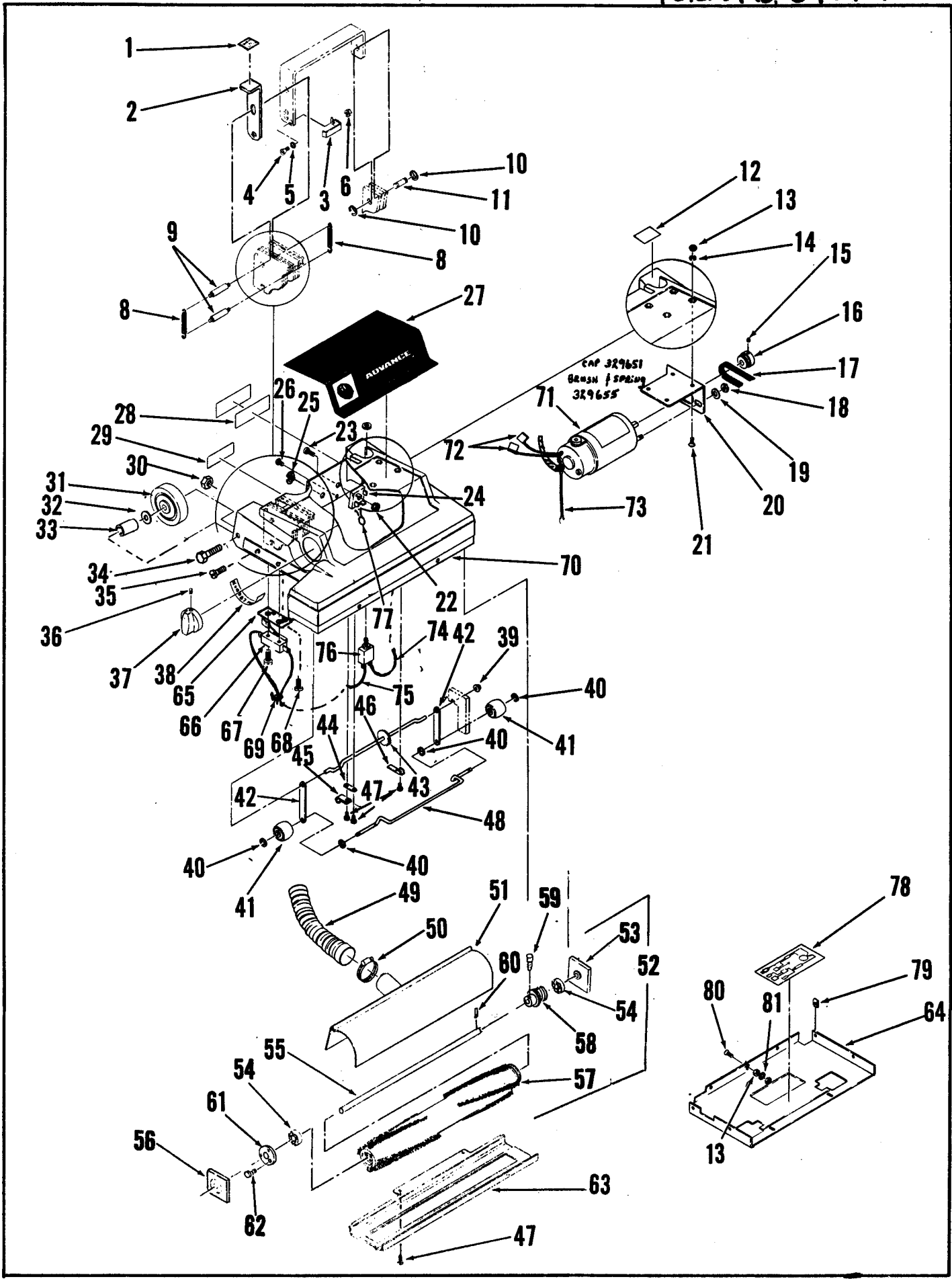
**ADVANCE
MACHINE COMPANY**

INTERNATIONAL HEADQUARTERS, Spring Park, Minnesota 55384-0275
EUROPE, 4 Rue Jean Engling, L-1466 Luxembourg
CANADA, 1295 Crestlawn Drive, Mississauga, Ontario L4W 1A9



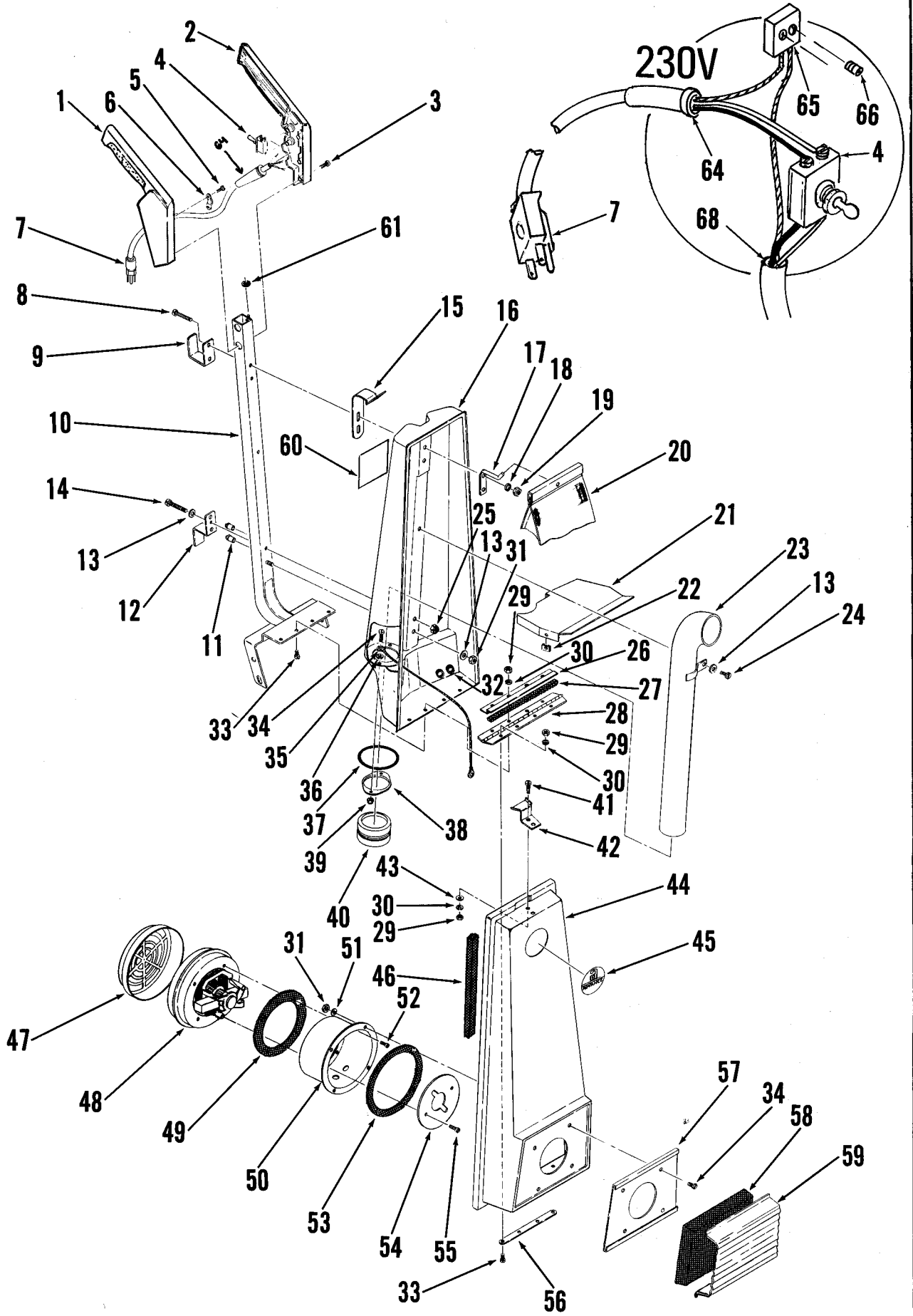
INDEX FOR FORM NUMBER 042101

<u>Description</u>	<u>Location</u>	<u>Page</u>
Bag Housing	D8	3
Base	D6	1
Motor, Vacuum	D10	5
Wiring Diagram	D11	6



BASE ASSEMBLY

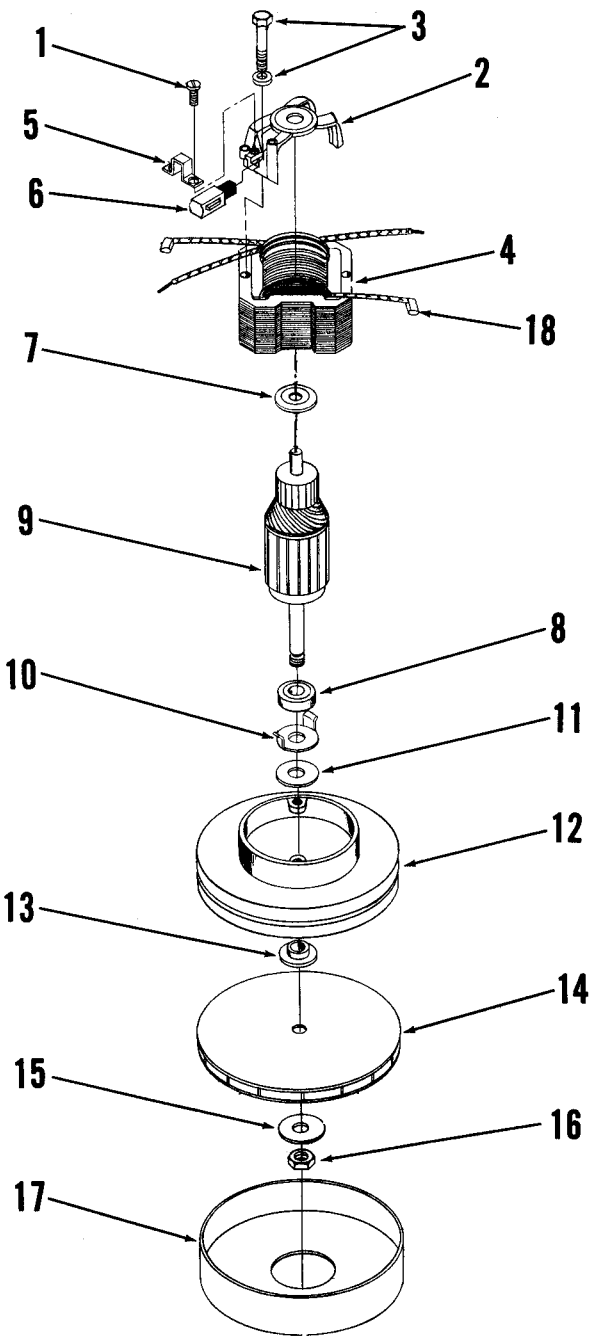
ITEM	PART NO.	QTY	DESCRIPTION
1	014 084	1	DECAL, RELEASE
2	329 545	1	PEDAL,W/DECAL
3	329 536	1	BRACKET, SWITCH
4		1	SCREW,FLAT HD. #8-32 x 3/8
5		1	WASHER,SHAKEPROOF #8
6		1	NUT,HEX WHIZ #8-32
7	329 552	1	WIRE ASSEMBLY,#14 x 9.00
8	445 177	2	SPRING,EXTENSION
9	329 556	1	PIN, PIVOT
10	321 427	2	RING,RETAINING
11	477 902	1	PIN, 3/8 x 1-1/16
12	014 074	1	DECAL, RESET
13		6	NUT,HEX #10-24
14		4	WASHER,LOCK #10
15		1	SET SCREW, 1/4-20 x 3/8
16	329 644	1	SHEAVE
17	329 686	1	BELT
18		2	NUT, ACORN #10-32
19		2	WASHER, SAE #10
20	329 688	1	MOUNT,MOTOR
21		4	SCREW,FLAT HD. #10-24 x 3/8
22		1	NUT,HEX WHIZ #10-24
23	329 060	1	SCREW,NYLON #10-24 x 3/4
24	180 162	1	RECTIFIER, 35A
25	163 015	1	STRAIN RELIEF
26		2	SCREW,PH.PAN HD. #8 x 1/2 S/T TYPE 'A'
27	014 066	1	DECAL, ADVANCE
	014 069	1	UNDERLAY, DECAL
28	015 324	1	NAMEPLATE, ADVANCE
	015 325	1	OVERLAY, NAMEPLATE
29	015 379	1	DECAL, WARNING
30		1	NUT,HEX WHIZ 1/4-20
31	324 499	2	WHEEL, 3.00 x .781
32	150 142	2	WASHER
33	329 585	2	BUSHING
34		2	SCREW,TRUSS HD. 1/4-20 x 1.50
35		4	SCREW,PH.OVAL HD.#8 x 1/2 S.T TYPE 'A'
36		1	SCREW, SOCKET SET #8-32 x 1/4
37	324 504	1	KNOB
38	021 106	1	DECAL, BRUSH ADJUST
39	290 935	1	CAP, STUD 1/4
40	321 125	6	RING,RETAINING EXT. 1/4
41	329 554	2	ROLLER
42	329 517	2	LINK, ROLLER
43	329 546	1	CRANKSHAFT
44	329 514	3	RETAINER,SHAFT
45	300 152	1	CLAMP, CORD
46	329 512	1	RATCHET
47	329 623	11	SCREW,S.T. #8-18 TYPE 'IN PLAS'
48	329 562	1	AXLE
49	329 560	1	HOSE, VAC 2.00 x 14.50
50	440 213	1	CLAMP, HOSE
51	329 532	1	INSERT, BRUSH
52	329 690	1	BRUSH ASSEMBLY, C/O
53	329 684	1	BLOCK,BEARING
54	290 283	2	BEARING,BALL
56	329 682	1	BLOCK,BEARING
57	329 672	1	BRUSH,TURBULATOR
58	329 678	1	SHEAVE, 1-3/8 DIA.
59		2	SCREW,CAP #8-32 x 3/8
60	200 999	1	GROOVE PIN
61	329 680	1	CAP
62		3	SCREW,PH.FLAT HD.S.T.#6 x 1/2 TYPE 'A'
63	329 572	1	SHOE
64	329 541	1	PAN,BOTTOM W/DECAL
65	329 058	1	BRACKET, SWITCH
66	171 225	1	SWITCH,SNAP SPST
67		2	SCREW,PAN HD #6-32 x .88
68		2	SCREW,FLAT HD. #6-32 x 1/2
69	478 246	1	CABLE TIE
70	329 525	1	HOUSING,W/DECALS
71	329 530	1	MOTOR,1/10 H.P. 100 VDC
	329 531	1	MOTOR,1/10 H.P. 200 VDC
72	244 838	2	RECEPTACLE,FLAG
73	329 552	1	WIRE ASSEMBLY,#14 x 9.00
74	329 566	1	WIRE ASSEMBLY,#14 x 4.00
75	329 564	1	WIRE ASSEMBLY,#14 x 15.00
76	329 630	1	CIRCUIT BREAKER,1.2A 115V
	290 427	1	CIRCUIT BREAKER,0.9A 230V
77	387 554	1	VARISTOR ASSEMBLY
78	014 070	1	WIRING DECAL, 115V
	014 082	1	WIRING DECAL, 230V
79	329 575	6	NUT,SPRING #8
80		1	SCREW,FLAT HD. #10-24 x 1/2
81	203 874	2	WASHER,.193 x .875 x .06



HANDLE ASSEMBLY

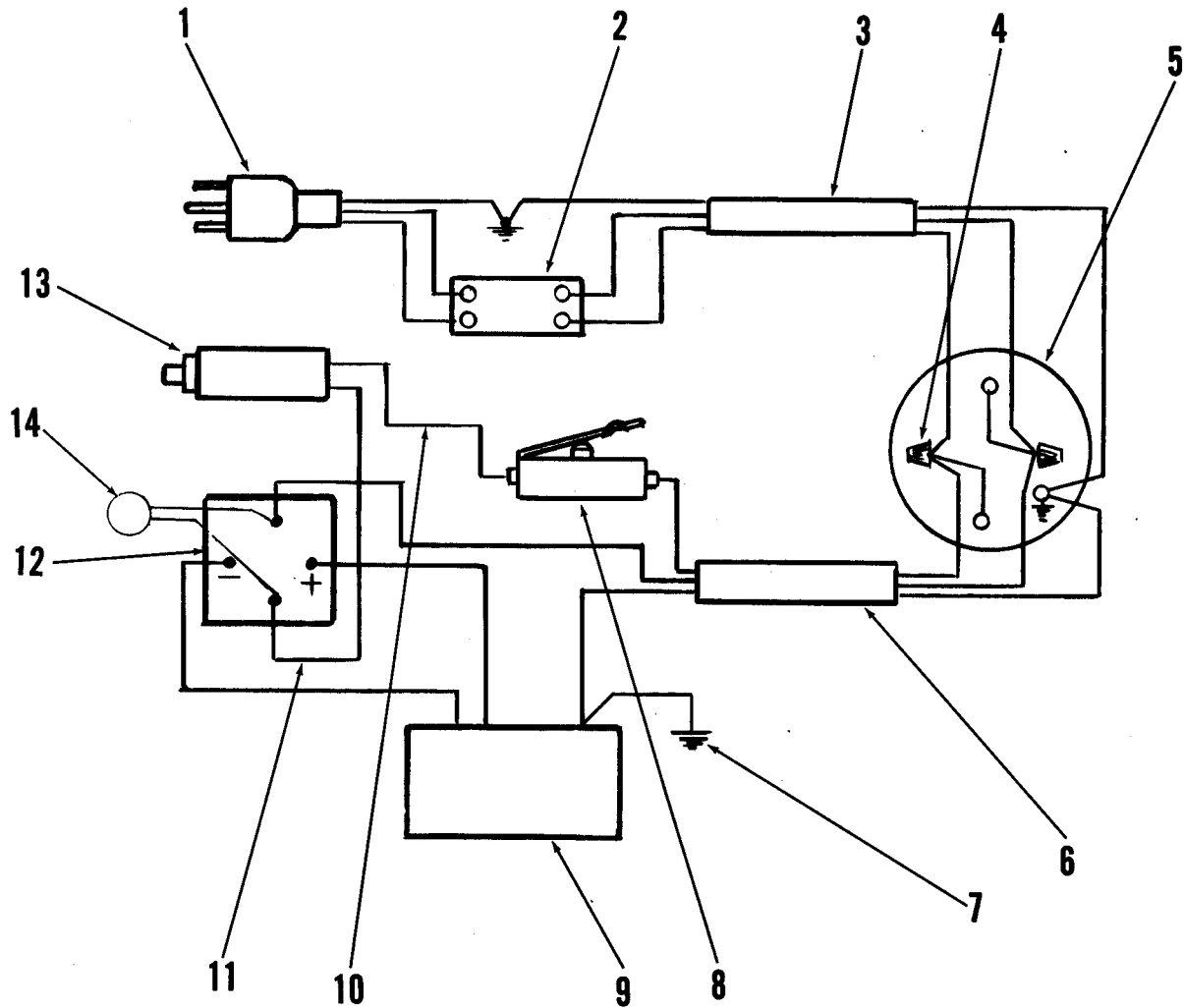
ITEM	PART NO	QTY	DESCRIPTION
1	329 621	1	HANDLE,RIGHT
2	329 620	1	HANDLE,LEFT
3	329 622	5	SCREW, S/T #8-16 x 1.00
4	301 636	1	SWITCH, TOGGLE
5	329 623	4	SCREW,S/T #8-16 x 5/8
6	329 616	1	CLAMP, CORD
7	329 628	1	CORD SET ASSEMBLY,115V
	300 227	1	CORD SET ASSEMBLY,230V
8		2	SCREW,PAN HD. S/T #10-24 x 1-3/4
9	325 168	1	HOOK,CORD
10	329 582	1	HANDLE WELDMENT
11	361 321	1	CATCH, BULLET
12	325 166	1	HOOK, CORD
13		3	WASHER,FLAT #10
14		1	SCREW,PAN HD. #10-24 x 1-3/4
15	329 608	1	LATCH
16	329 593	1	HOUSING, BACK
17	325 164	1	HOOK, BAG
18		4	WASHER,LOCK #10
19		4	NUT, ACORN #10
20	324 530	1	BAG,CLOTH
	324 531	1	BAG, DISPOSABLE
21	329 590	1	SUPPORT, BAG
22	325 504	2	NUT, SPRING
23	325 162	1	TUBE
24		1	SCREW,PAN HD. S/T #10-32 x 1/2
25		1	NUT,LOCK #10-24
26	329 576	1	PLATE,HANDLE
27	385 448	65"	GASKET, RS 3/8 x 3/8
28	329 642	1	HINGE
29		10	NUT,HEX #6-32
30		10	WASHER,LOCK #6
31		4	NUT,HEX #10-24
32	320 319	4	BUSHING, NYLON
33		8	SCREW,PAN HD. #6-32 x 1/2
34		6	SCREW,PAN HD. #10-24 x 5/8
35	325 240	1	WIRE ROPE ASSEMBLY 10"
36		6	WASHER,LOCK #10
37	325 157	1	O-RING
38	325 160	1	PLATE
39		4	NUT, ACORN #10-24
40	330 088	1	CUFF,HOSE
41		4	SCREW, PAN HD. #6-32 x 3/8
42	326 250	1	STRIKE,LATCH
43		2	WASHER,FLAT #6
44	329 595	1	HOUSING, FRONT W/DECALS
45	014 072	1	DECAL, ADVANCE
46	325 324	58"	GASKET, RS 1/4 x 1/4
47	384 898	1	FILTER
48	329 598	1	MOTOR, VACUUM W/GASKET 115V
	301 622	1	MOTOR, VACUUM W/GASKET 230V
49	209 325	1	GASKET
50	325 120	1	CUP, VAC MOTOR
51		6	WASHER, SHAKEPROOF #10
52		4	SCREW,PAN HD S/T #10-24 x 1/2
53	325 148	1	GASKET
54	325 332	1	BAFFLE
55	325 134	3	SCREW, TC #10 x 3/8
56	325 208	1	PLATE
57	329 586	1	PLATE, FILTER
58	329 584	1	FILTER
59	329 588	1	DEFLECTOR,AIR
60	015 014	1	DECAL, WARNING
61		1	WASHER, SHAKEPROOF #8
62	329 568	1	CORD ASSEMBLY,#18/3 x 39 (SEE WIRING DIAGRAM)
	329 640	1	CORD ASSEMBLY,#16/3 x 37 (SEE WIRING DIAGRAM)
63	321 737	2	CONNECTOR,WIRE (SEE WIRING DIAGRAM)
64	329 610	1	STRAIN RELIEF
65	329 612	1	CONNECTOR,GROUND 230V
66		2	SET SCREW, #4-40 x .25
67	320 676	1	CLAMP, BAG
68	329 626	1	CORD ASSEMBLY, #18/3 x 46 115V
	329 638	1	CORD ASSEMBLY, #16/3 x 46 230V

VACUUM MOTOR



ITEM	PART NO	QTY	DESCRIPTION
1	203 263	4	SCREW
2	300 406	1	BRACKET, COMMUTATOR END
3	325 090	2	SCREW & WASHER 115V
	203 494	2	SCREW & WASHER 230V
4		1	FIELD
5	207 285	2	CLAMP
6	203 518	2	BRUSH MECHANISM
7	228 388	1	WASHER, FIBER
8	228 051	1	BEARING, BALL
9	325 084	1	ARMATURE, 115V
	203 549	1	ARMATURE 230V
10	203 471	1	WASHER, CLAMPING
11	202 630	1	WASHER, FELT 115V
12	203 459	1	WASHER, FELT 230V
13	325 094	1	SHELL & BRACKET ASSEMBLY 115V
	301 184	1	SHELL & BRACKET ASSEMBLY 230V
14	203 424	1	SPACER
15	208 191	1	FAN, ROTATING
16	203 432	1	WASHER
17	203 440	1	NUT
	325 088	1	FAN SHELL, 115V
	203 491	1	FAN SHELL, 230V
18	203 584	2	FIELD CLIP
N/S	207 268	1	FAN, STATIONARY 230V
N/S	203 516	1	SPACER

N/S NOT SHOWN



ITEM	PART NO	QTY	DESCRIPTION
1	329 628	1	CORD SET ASSEMBLY, 115V
	300 227	1	CORD SET ASSEMBLY, 230V
2	301 636	1	SWITCH, TOGGLE
3	329 626	1	CORD ASSEMBLY, #18/3 x 46 115V
	329 638	1	CORD ASSEMBLY, #16/3 x 46 230V
4	321 737	2	CONNECTORS, WIRE
5	329 598	1	MOTOR,VACUUM 115V
	301 622	1	MOTOR,VACUUM 230V
6	329 568	1	CORD ASSEMBLY, #18/3 x 39 115V
	329 640	1	CORD ASSEMBLY, #16/3 x 37 230V
7	329 552	1	WIRE ASSEMBLY,#14 x 9.00
8	171 225	1	SWITCH,SNAP SPST N.C.
9	329 530	1	MOTOR,1/10 H.P. 100 V.D.C
	329 531	1	MOTOR,1/10 H.P. 200 V.D.C
10	329 564	1	WIRE ASSEMBLY, #14 x 15.00
11	329 566	1	WIRE ASSEMBLY, #14 x 4.00
12	180 162	1	RECTIFIER, 35A
13	329 630	1	CIRCUIT BREAKER, 1.2A 115V
	290 427	1	CIRCUIT BREAKER, 0.9A 230V
14	387 554	1	VARISTOR ASSEMBLY

ELECTRICAL SCHEMATIC