

CARPETWIN

MODEL 160

THIS PARTS LIST IS FOR MACHINES
AFTER THE SERIAL NUMBER 053103

PARTS LIST



ADVANCE
MACHINE COMPANY

INTERNATIONAL HEADQUARTERS, Spring Park, Minnesota 55384-0275

EUROPE, 4 Rue Jean Engling, L-1466 Luxembourg

CANADA, 1295 Crestlawn Drive, Mississauga, Ontario L4W 1A9

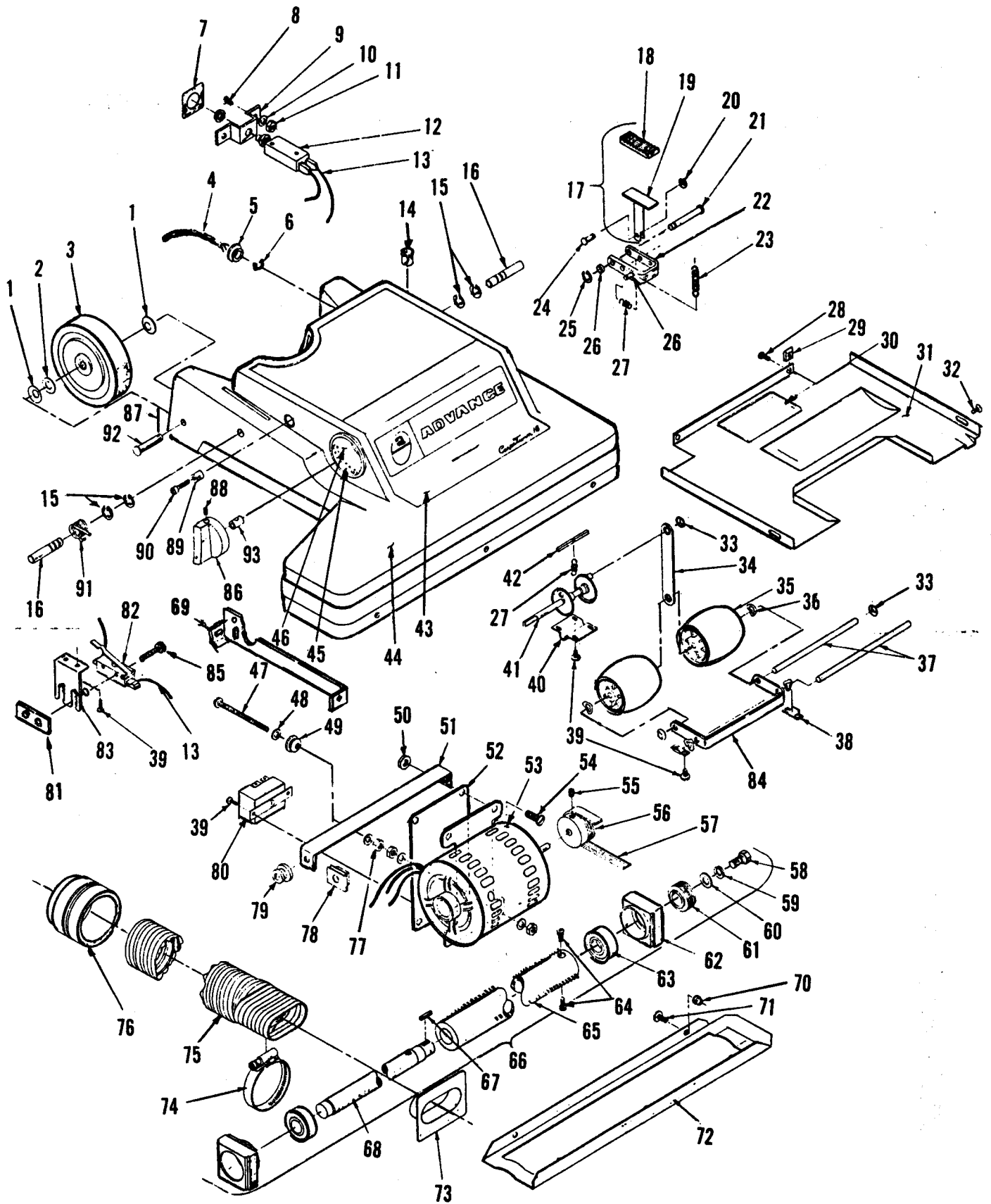
© 1985 Advance Machine Co.



FORM NO. 042127 3/85

Index for Form Number 042127

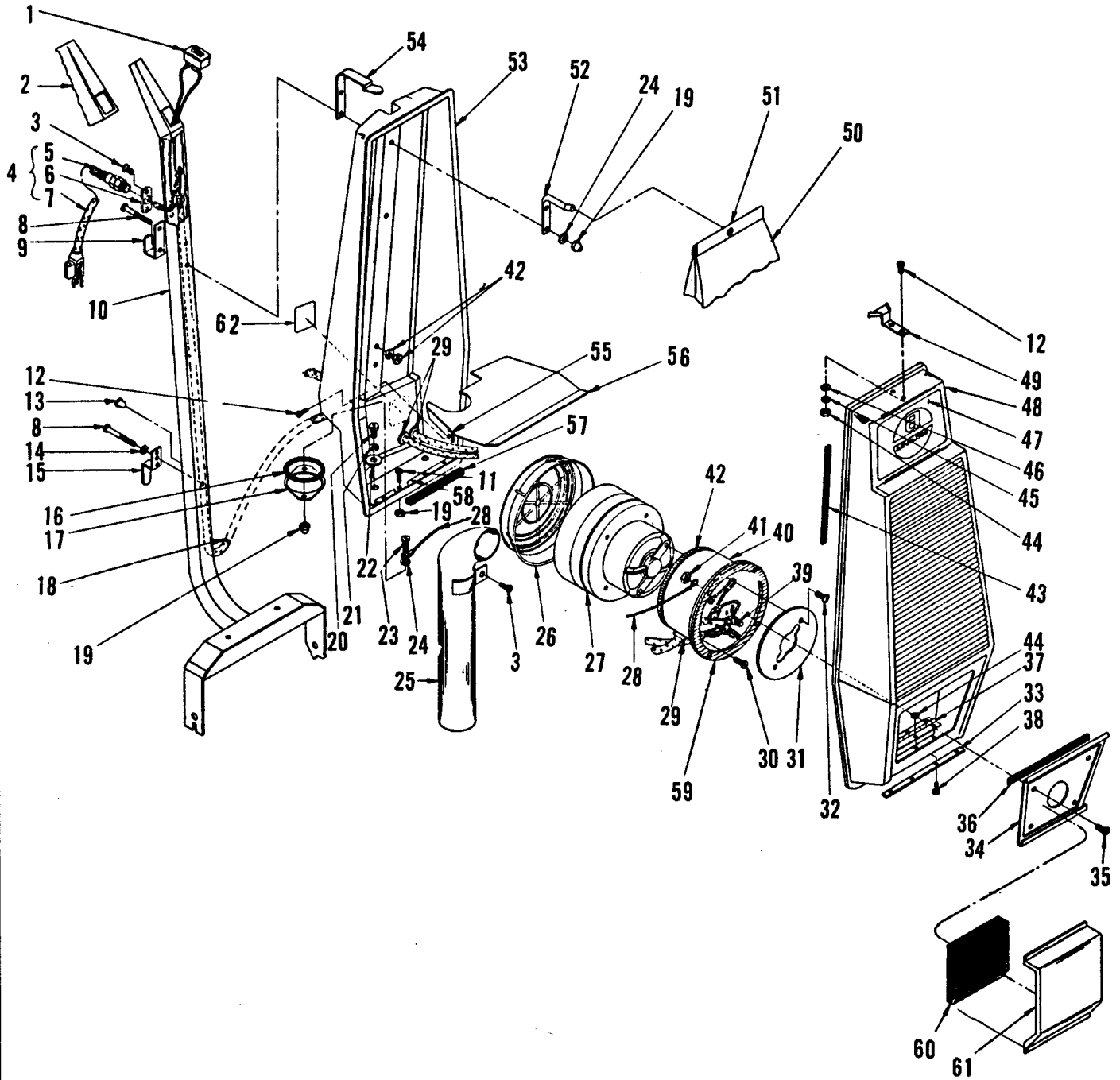
Description	Location	page
Bag Housing	D1	3
Base Housing	C13	1
Motor, Vacuum	D3	5
Wiring Diagram	D4	6



BASE ASSEMBLY

Item	Part No.	Qty	Description	Item	Part No.	Qty	Description
1	151041	4	Washer Bowed	48		4	Washer Flat 1/4
2		2	Washer Flat 3/8	49	321559	1	Grommet
3	327530	2	Wheel 4.00 x .968	50		3	Nut with Flange 1/4-20
4	325316	1	Cord Assembly 115V	51	325515	1	Bracket, Motor
5	321540	3	Grommet .500	52	322172	1	Plate, Motor
6	320358	1	Strain Relief	53	228408	1	Motor, Drive TSB 537, G-8
7	015020	1	Decal, Reset	54		3	Screw 1/4-20 x 1/2
8		2	Screw Flat Head #8-32 x 1/4	55		1	Screw Set 5/16-18 x 1/2
9	322410	1	Bracket, Circuit Breaker	56	322490	1	Pulley
10		2	Washer #8	57	320366	1	Belt
11		2	Nut Hex #8-32	58		1	Screw Hex 5/16-18 x 5/8
12	228414	1	Circuit Breaker 3.5A (115V)	59		1	Lock Washer 5/16
13	322412	1	Wire Assembly	60		1	Washer Flat 5/16
14	218472	1	Bushing, Nylon	61	322482	1	Sheave
15	321427	4	Ring, Retaining	62	320140	2	Block, Bearing
16	321402	2	Pin, Pivot	63	372773	2	Bearing
17	321065	1	Foot Pedal Assembly	64		2	Screw Socket.Hd #10-24 x 1/2
18	321064	1	Cap, Foot Pedal	65	320252	1	Brush, Turbulator
19	321054	1	Pedal	66	320290	1	Brush Assembly 16"
20	321128	1	Ring, Retaining	67	109258	1	Key
21	321095	1	Pin	68	320220	1	Shaft Assembly
22	328598	1	Latch	69	322654	1	Brace
23	321087	1	Spring	70		2	Flange Nut #10-32
24	321068	1	Pin, Foot Pedal	71		2	Screw #10-32 x 3/8
25	321125	2	Ring, Retaining	72	325533	1	Shoe
26	328642	1	Pin, Groove	73	325527	1	Adapter, Hose
27	320484	2	Spring	74	440213	1	Clamp, Hose
28		3	Screw Pan Head #8 x 1/2 S.T	75	325294	1	Hose
29	329575	6	Nut Spring	76	330088	1	Cuff, Hose
30	014113	1	Decal, Wiring	77		3	Hex Nut 1/4-20
31	325521	1	Shield, Base	78	321520	2	Nut
32		1	Screw Oval Head #8 x 1/2 S.T	79	321540	3	Grommet, Motor Mount
33	325227	3	Nut Stud	80	321610	1	Relay, 115V
34	325258	1	Link	81	385747	1	Plate, Nut
35	325244	2	Roller	82	171225	1	Switch, Snap SPST N.C.
36	150150	4	Washer Bowed	83	321615	1	Bracket, Switch
37	325229	2	Pin, Pivot	84	325254	1	Yoke, Adjusting
38	325213	2	Clamp, Axle	85		2	Screw Pan Head#6-32 x 1 1/4
39		12	Screw Pan Head #6-32 x 3/8	86	324504	1	Knob, Brush Height Adjusting
40	325225	1	Retainer, Ratchet	87	321406	2	Pin, Cotter
41	320474	1	Ratchet	88		1	Screw Socket Set #8-32 x 1/4
42	320476	1	Catch, Ratchet	89	321532	2	Bushing
43	014062	1	Decal, Advance	90		2	Screw Pan Head 1/4-20 x 5/8
44	325512	1	Housing	91	321398	1	Spring, Torsion
45	021106	1	Decal, Knob	92	321404	2	Axle, Rear
46	325410	1	Insert, Knob	93	321178	1	Spacer, Knob
47		1	Screw 1/4-20 x 3 1/4				

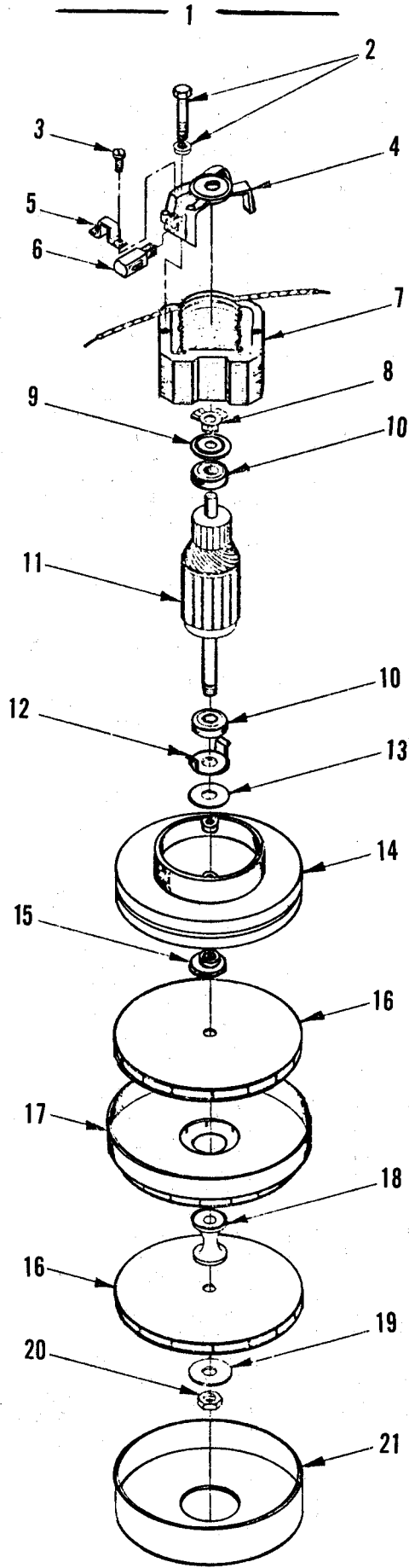
63



HANDLE ASSEMBLY

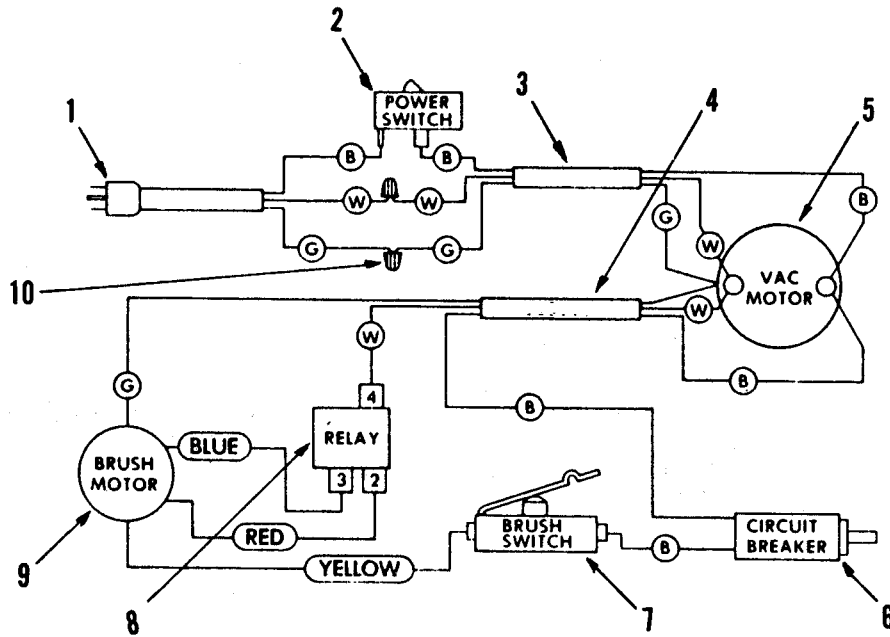
ITEM	PART NO.	QTY.	DESCRIPTION
1	325 140	1	SWITCH, ROCKER
2	585 099	1	GRIP, HANDLE
3		5	SCREW, PHIL.HD #10-32 X 1/2 HP-5
4	580 465	1	CORD SET ASSY. 115V 18 X 40
5	162 736	1	STRAIN RELIEF
6	322 027	1	PLATE, STRAIN RELIEF 115V
7	580 472	1	CORD SET, 115V
8		3	SCREW, PAN HD #10-24 X 1 5/8
9	325 168	1	HOOK, CORD
10	325 282	1	HANDLE
11	325 316	1	CORD ASSY. 18/3 X 26
12		6	SCREW, PAN HD. #6-32 X 5/16
13	361 321	2	CATCH, BULLET
14		2	WASHER, FLAT #10
15	325 166	1	CORD HOOK, SWIVEL
16	325 157	1	O-RING -132 NBR 70
17	325 160	1	KEEPER PLATE
18	325 312	1	CORD, HANDLE 115V 16"
19		6	NUT, ACORN #10-24
20		2	SCREW, HEX HD. 1/4-20 X 3/8
21		2	LOCKWASHER 1/4"
22	151 114	2	WASHER, FLAT 1/4"
23		2	SCREW, PAN HD. #10-24 X 5/8
24		2	LOCKWASHER #10
25	325 162	1	TUBE, INLET
26	384 898	1	FILTER, VAC MOTOR
27	300 381	1	MOTOR, VACUUM, 115V
28	325 240	1	CABLE STOP
29	162 981	4	STRAIN RELIEF
30		4	SCREW, PAN HD. #10-24 X 1/2
31	325 332	1	BAFFLE PLATE
32	325 134	2	SCREW, TC #10 X .375
33	325 208	1	PLATE, HINGE
34	325 173	1	PLATE, FILTER
35		4	SCREW, HEX HD. #10-24 X 1/2 W/WASHER
36	200 754	1	GASKET
37	325 205	1	HINGE
38		5	SCREW, PAN HD. #6-32 X 3/8
39	321 737	5	CONNECTOR, WIRE NUT
40	325 120	1	CUP, VAC MOTOR
41		6	NUT, HEX #10-24
42	209 325	1	GASKET, MOTOR
43	325 324	1	GASKET, 65-1/2"
44		11	NUT, HEX #6-32
45		3	LOCKWASHER, #6
46		2	WASHER, FLAT #6
47	014 060	1	DECAL, ADVANCE
48	325 297	1	HOUSING, FRONT
49	325 250	1	STRIKE LATCH
50	324 530	1	BAG, CLOTH
51	520 676	1	CLAMP, BAG
52	325 164	1	HOOK, BAG
53	325 322	1	HOUSING
54	325 337	1	LATCH
55	322 504	2	NUT, SPRING
56	325 138	1	SUPPORT, BAG
57	385 448	1	GASKET RS 3/8 X 3/8
58	325 207	1	PLATE, HOUSING
59	325 148	1	GASKET, CUP
60	325 163	1	FILTER, STD.
61	325 161	1	DEFLECTOR, AIR
62	015 314	1	DECAL, "WARNING"
63	329 360	1	HANDLE ASSY. 16" C'TWIN
64	325 219	1	TIE, CABLE (NOT SHOWN)
65	320 319	4	BUSHING, NYLON (NOT SHOWN)

ITEM	PART NO.	QTY.	DESCRIPTION
1	300 381	1	MOTOR, VACUUM 115V
2	203 494	2	SCREW
3	203 494	2	SCREW, COMMUTATOR
4	207 234	1	BRACKET, COMMUTATOR END 115V
5	207 285	2	CLAMP, BRUSH
6	203 518	SET	MOTOR BRUSHE (1 SET OF 2)
7		1	FIELD
8	202 843	1	LOAD SPRING 115V
9	203 513	1	DISC 115V
10	228 051	2	BEARING
11	203 549	1	ARMATURE
12	203 471	1	WASHER, CLAMPING
13	203 459	1	WASHER, FLAT
14	301 184	1	BRACKET & SHELL ASSEMBLY 115V
15	203 424	1	SPACER
16	208 191	2	FAN, ROTATING
17	207 268	1	FAN, STATIONARY
18	203 516	1	SPACER
19	203 432	1	WASHER
20	203 440	1	NUT
21	203 491	1	SHELL, FAN



115 VOLT

B-BLACK
G-GREEN
W-WHITE



ITEM	PART NO.	QTY.	DESCRIPTION
1	580 465	1	CORD SET ASSEMBLY
2	325 140	1	SWITCH, ROCKER
3	325 312	1	CORD ASSEMBLY 18/3 X 51
4	325 316	1	CORD ASSEMBLY 18/3 X 26
5	300 381	1	MOTOR, VACUUM
6	228 414	1	CIRCUIT BREAKER 3.5A
7	171 225	1	SWITCH, SNAP SPST
8	321 610	1	RELAY
9	228 408	1	MOTOR, BRUSH DRIVE
10	321 737	5	CONNECTOR, WIRE NUT