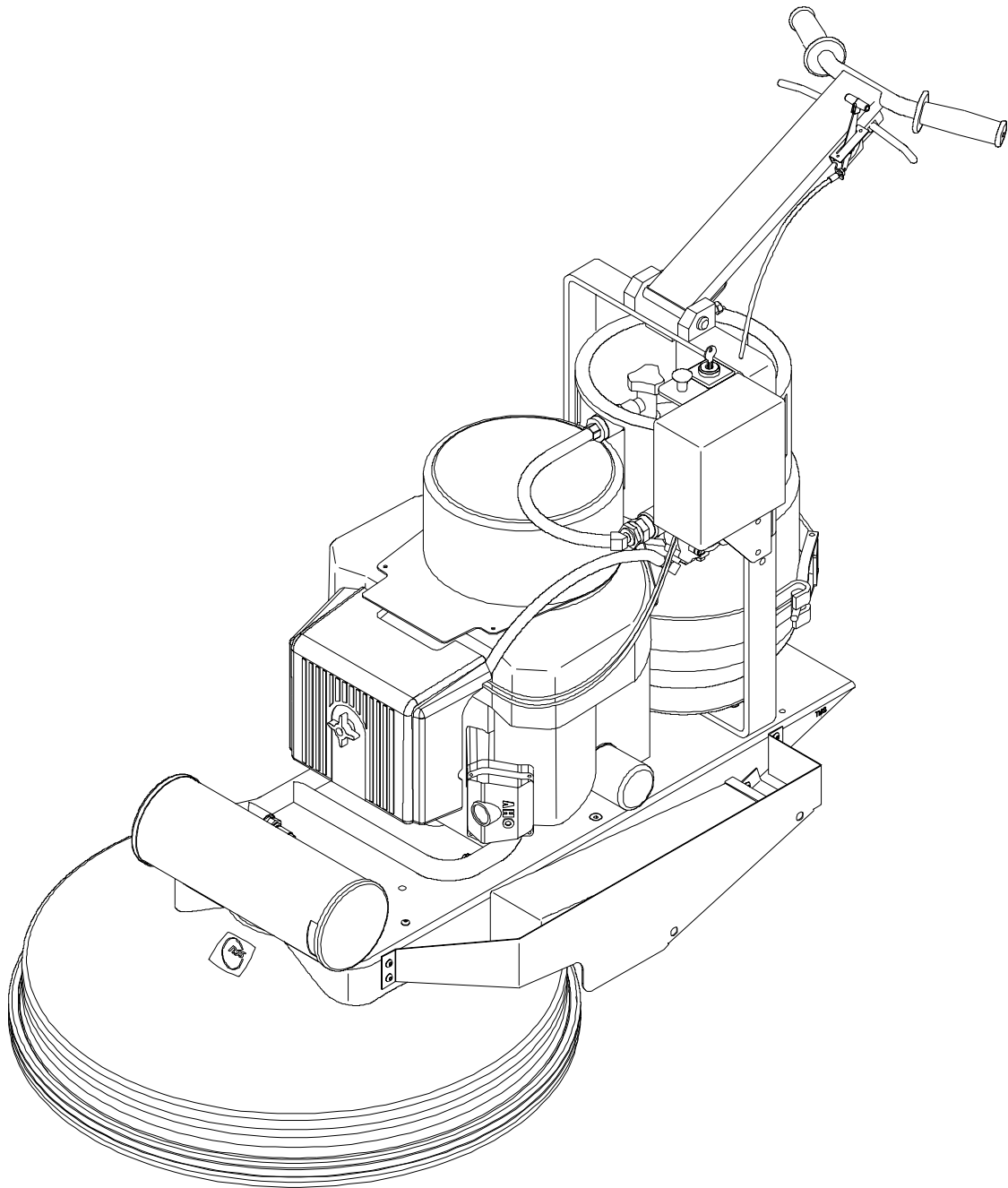


PARTS LIST

# COMMANDER 27 VAC-TRAC

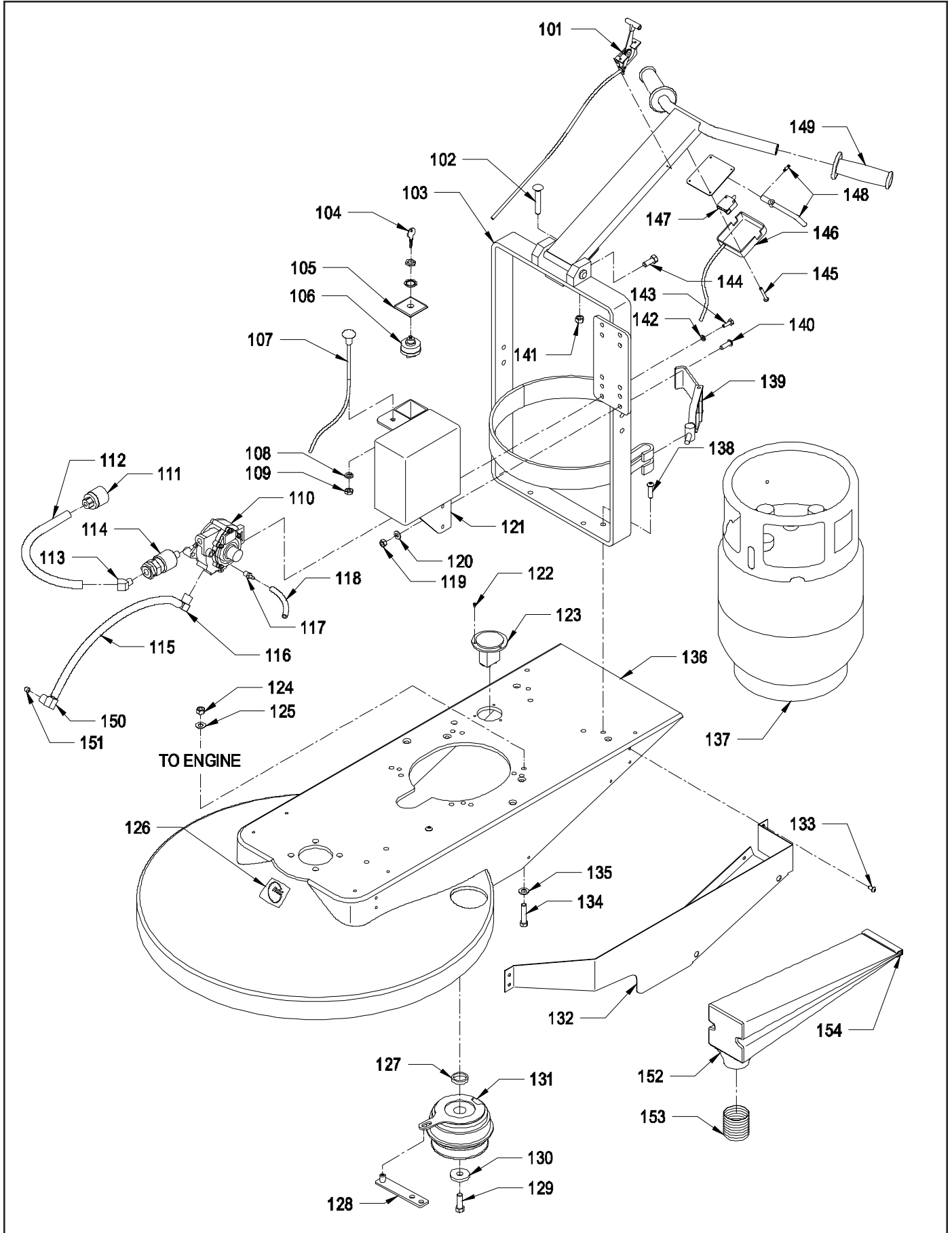
# COMMANDER 20 VAC-TRAC



## UPPER ASSEMBLY

<u>ITEM</u>	<u>PART NO.</u>	<u>DESCRIPTION</u>	<u>QTY.</u>
101	6190481	THROTTLE CABLE	1
	6190751	THROTTLE CABLE WITHOUT CHOKE	1
102	6190921	3/8-16 X 2 1/2 CARRIAGE BOLT	1
103	6190501	HANDLE	1
106	6190411	KEY SWITCH COMPLETE - INCLUDES:	1
104	6190511	REPLACEMENT KEY	1
105	6190421	KEY SWITCH HOUSING	1
107	6190521	CHOKE CABLE	1
108	9122100	3/8 SPLIT LOCK WASHER	1
109	9121990	3/8-16 HEX JAM NUT	1
110	6190441	REGULATOR	1
111	6190471	QUICK COUPLING	1
112	6190461	HOSE LP TANK TO REGULATOR	1
113	6590171	45° STREET ELBOW 1/4	1
114	6190451	FUEL LOCK WITH FILTER - 12 VOLT	1
115	6190531	HOSE - 3 FOOT - FUEL	1
116	6190541	90° BRASS ELBOW - 3/8 NPT X 5/16 HOSE	1
117	6190551	FITTING 1/4 BARB X 1/4 NPT	1
118	6190561	HOSE - 3 FOOT - VAC	1
119	9121450	5/16-18 HEX NUT WITH NY-LOK INSERT	2
120	9121390	11/32 I.D. X 11/16 O.D. X .051/.080 THICK FLAT WASHER (5/16)	2
121	6190401	BATTERY BOX	1
	6190331	BATTERY - 12 VOLT	1
122	2391751	1/8 X 5/8 DOME HEAD POP RIVET - STEEL	3
123	6190321	HOUR METER	1
124	9121450	5/16-18 HEX NUT WITH NY-LOK INSERT	5
125	9121390	11/32 I.D. X 11/16 O.D. X .051/.080 THICK FLAT WASHER (5/16)	5
126	7690931	DECAL - NSS LOGO	1
127	6190571	CLUTCH SPACER	1
128	6190581	CLUTCH ARM HOLDER	1
129	6190931	7/16-20 X 1 HEX BOLT	1
130	6190591	CLUTCH WASHER	1
131	6190201	ELECTRIC CLUTCH	1
132	6190041	BAG TRAY 27" - VAC-TRAC	1
	6191551	BAG TRAY 20" - VAC-TRAC	1
133	6190941	1/4-20 X 1/2 BUTTON HEAD CAP SCREW	6
134	9121760	5/16-18 X 1 3/4 HEX BOLT	3
	9122130	5/16-18 X 2 1/4 HEX BOLT	1
135	9121390	11/32 I.D. X 11/16 O.D. X .051/.080 THICK FLAT WASHER (5/16)	4
136	6190031	DECK - 27" - VAC-TRAC	1
	6191511	DECK - 20" - VAC-TRAC	1
137	6190381	LP TANK	1
138	6190951	5/16-18 X 1 1/4 BUTTON HEAD CAP SCREW	4
139	6590111	CLAMP - TANK	1
140	6190961	5/16-18 X 1 BUTTON HEAD CAP SCREW	2
141	9122140	3/8-16 HEX NUT WITH NY-LOK INSERT	1
142	9120880	1/4 SPLIT LOCK WASHER	2
143	9121210	1/4-20 X 5/8 HEX BOLT	2
144	9122260	3/8-16 X 1 HEX BOLT	2
145	6190911	8 X 1 1/2 HEX HEAD SELF TAPPING SCREW	3
146	6190631	CLUTCH SWITCH ASSEMBLY - COMPLETE - INCLUDES:	1
147	6190711	SWITCH (CLUTCH)	1
148	6190721	ARM AND SPRING	2
149	6190491	HANDLE GRIP	2
150	6190731	3/8 HOSE X 1/4 MP ELBOW	1
151	6191411	BRASS PLUG 1/8 - #32	1
152	6190051	BAG - INCLUDES:	1
153	6190061	2" I. D. HOSE	1
154	6190741	BAG CLAMP ONLY	1

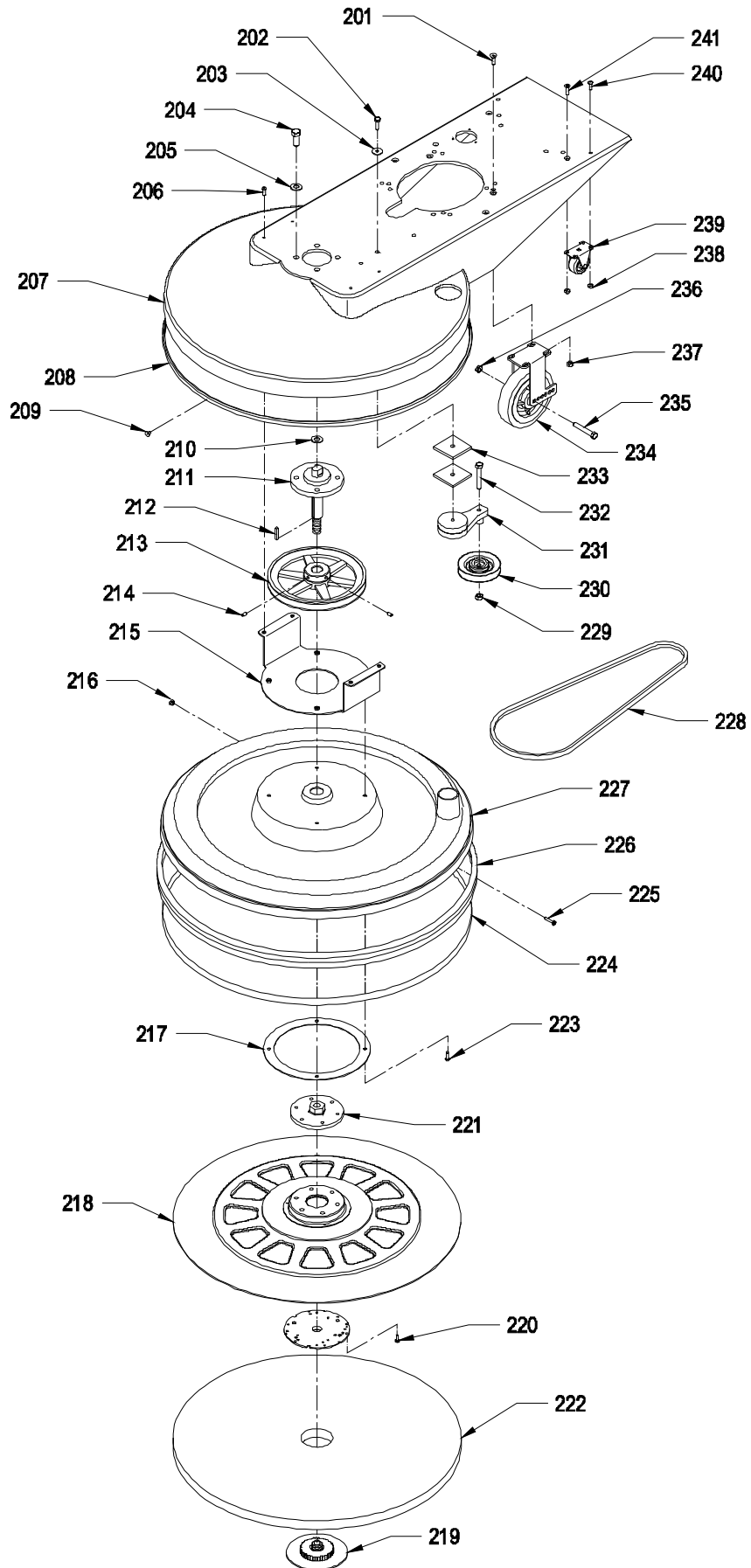
# UPPER ASSEMBLY



## LOWER ASSEMBLY 27"

<u>ITEM</u>	<u>PART NO.</u>	<u>DESCRIPTION</u>	<u>QTY.</u>
201	6190971	5/16-18 X 1 FLAT HEAD SOCKET CAP SCREW	4
202	9121060	3/8-16 X 1 1/4 HEX HEAD BOLT	1
203	9122110	3/8 I.D. X 1 1/2 O.D. FENDER WASHER	1
204	6190931	7/16-20 X 1" HEX BOLT	4
205	9122470	9/16 I.D. X 1 3/8 O.D. X .086/.132 THICK WROUGHT WASHER (1/2)	4
206	6190991	1/4-20 X 3/4 BUTTON HEAD CAP SCREW	4
207	6190031	DECK - 27" - VAC-TRAC	1
208	6190641	BUMPER MOLDING	1
209	2391751	1/8 X 5/8 DOME HEAD POP RIVET	7
210	9122470	9/16 I.D. X 1 3/8 O.D. X .086/.132 THICK WROUGHT WASHER (1/2)	1
211	6190111	FRONT BEARING AND SHAFT ASSEMBLY - 27" - VAC-TRAC - INCLUDES:	1
	6190651	FRONT BEARING HOUSING	1
	6190121	DRIVEN SHAFT - 27" - VAC-TRAC	1
	6190671	SNAP RING	2
	6190681	205pp BEARING	2
212	6190981	1/4 SQUARE X 1 1/4 LONG KEY	1
213	6190211	PULLEY 8.5 - 27" - VAC-TRAC	1
214	9121380	5/16-18 X 3/8 SET SCREW - KNURL POINT	2
215	6190021	FLEXIWALL SHIELD MOUNT	1
216	9120350	10-24 HEX NUT WITH NY-LOK INSERT	1
217	6190081	FLEXIWALL SHIELD MOUNTING RING - 27" - VAC-TRAC	1
218	6190241	27" PAD DRIVER COMPLETE - INCLUDES:	1
	6190231	PAD DRIVER 27"	1
219	6190251	CENTER LOCK PAD HOLDER - BLACK	1
220	9120450	10-24 X 1 ROUND HEAD PHILLIPS MACHINE SCREW	3
221	6190261	FLANGE	1
222	-----	PAD - FOR INFORMATION SEE ACCESSORIES PAGE	1
223	9120980	1/4-20 X 3/4 BUTTON HEAD CAP SCREW	4
225	9120450	10-24 X 1 ROUND HEAD PHILLIPS MACHINE SCREW - VAC-TRAC	1
227	6190019	FLEXIWALL SHIELD ASSEMBLY - 27" - VAC-TRAC - INCLUDES:	1
	6190011	FLEXIWALL SHIELD ONLY 27"	1
226	6592531	BUMPER BRUSH ONLY 27"	1
224	6592552	BUMPER STRAP ONLY 27"	1
228	6190761	BELT BX-51 - 27" VAC-TRAC	1
	6190221	BELT BX-52 - 27" VAC-TRAC	1
229	9122140	3/8-16 HEX NUT WITH NY-LOK INSERT	1
230	6190301	PULLEY - IDLER	1
231	6190311	TENSIONER ARM	1
232	9122080	3/8-16 X 2 1/2 HEX BOLT	1
233	6190601	TENSIONER ARM SPACER	2
234	6190131	6" X 1 1/2" WHEEL WITH BRACKET - FOR 27" VAC-TRAC - INCLUDES:	2
	6190281	WHEEL ONLY	2
235	6190611	WHEEL AXLE BOLT	2
	6190621	WHEEL BEARING KIT	2
236	9121990	3/8-16 HEX JAM NUT	2
237	9121450	5/16-18 HEX NUT WITH NY-LOK INSERT	4
238	9120900	1/4-20 HEX NUT WITH NY-LOK INSERT	4
239	6190291	2" CASTER WITH GRAY WHEELS	2
240	6190991	1/4-20 X 3/4 BUTTON HEAD CAP SCREW	2
241	6191001	1/4-20 X 3/4 FLAT HEAD SOCKET CAP SCREW	2

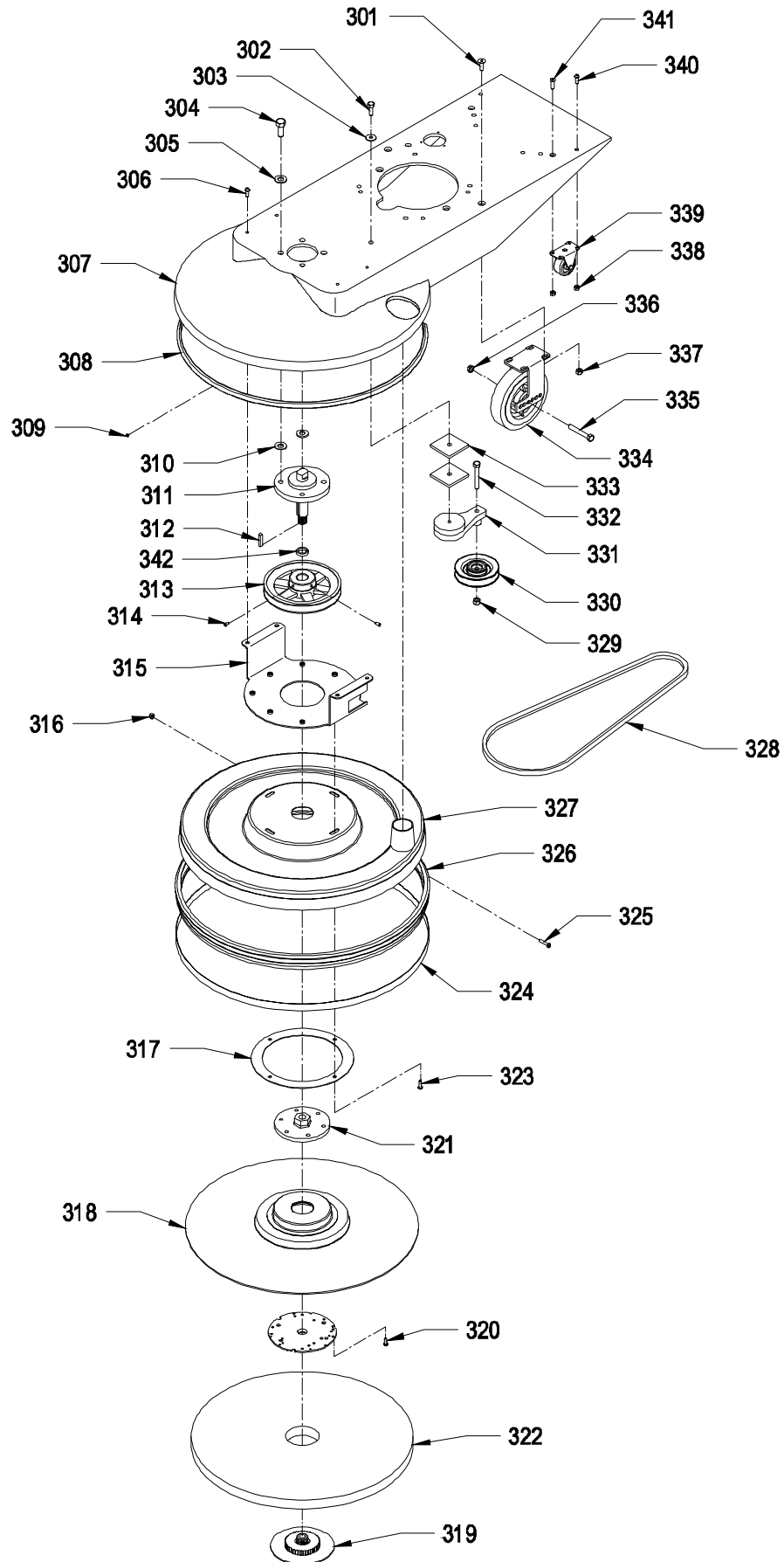
# LOWER ASSEMBLY 27"



## LOWER ASSEMBLY 20"

<u>ITEM</u>	<u>PART NO.</u>	<u>DESCRIPTION</u>	<u>QTY.</u>
301	6190971	5/16-18 X 1 FLAT HEAD SOCKET CAP SCREW	4
302	9121060	3/8-16 X 1 1/4 HEX HEAD BOLT	1
303	9122110	3/8 I.D. X 1 1/2 O.D. FENDER WASHER	1
304	6190931	7/16-20 X 1" HEX BOLT	4
305	9122470	9/16 I.D. X 1 3/8 O.D. X .086/.132 THICK WROUGHT WASHER (1/2)	4
306	6190991	1/4-20 X 3/4 BUTTON HEAD CAP SCREW	4
307	6191511	DECK - 20" - VAC-TRAC	1
308	6190641	BUMPER MOLDING	1
309	2391751	1/8 X 5/8 DOME HEAD POP RIVET	7
310	9122470	9/16 I.D. X 1 3/8 O.D. X .086/.132 THICK WROUGHT WASHER (1/2)	1
311	6190111	FRONT BEARING AND SHAFT ASSEMBLY - 20" - VAC-TRAC - INCLUDES:	1
	6190651	FRONT BEARING HOUSING	1
	6190691	DRIVEN SHAFT - 20" - VAC-TRAC	1
	6190671	SNAP RING	2
	6190681	205pp BEARING	2
312	6190981	1/4 SQUARE X 1 1/4 LONG KEY	1
313	6191701	PULLEY 7.0 - 20" - VAC-TRAC	1
314	9121380	5/16-18 X 3/8 SET SCREW - KNURL POINT	2
315	6190021	FLEXIWALL SHIELD MOUNT	1
316	9120350	10-24 HEX NUT WITH NY-LOK INSERT	1
317	6191541	FLEXIWALL SHIELD MOUNTING RING - 20" - VAC-TRAC	1
318	6191731	20" PAD DRIVER COMPLETE - INCLUDES:	1
	6191721	PAD DRIVER 20"	1
319	6190251	CENTER LOCK PAD HOLDER - BLACK	1
320	9120450	10-24 X 1 ROUND HEAD PHILLIPS MACHINE SCREW	3
321	6190261	FLANGE	1
322	-----	PAD - FOR INFORMATION SEE ACCESSORIES PAGE	1
323	9120980	1/4-20 X 3/4 BUTTON HEAD CAP SCREW	4
325	9120450	10-24 X 1 ROUND HEAD PHILLIPS MACHINE SCREW - VAC-TRAC	1
327	6191531	FLEXIWALL SHIELD ASSEMBLY - 20" - VAC-TRAC	1
	6191521	FLEXIWALL SHIELD ONLY 20"	1
326	6490191	BUMPER BRUSH ONLY 20"	1
324	6490732	BUMPER STRAP ONLY 20"	1
328	6191711	BELT BX-44 - 20" VAC-TRAC	1
329	9122140	3/8-16 HEX NUT WITH NY-LOK INSERT	1
330	6190301	PULLEY - IDLER	1
331	6190311	TENSIONER ARM	1
332	9122080	3/8-16 X 2 1/2 HEX BOLT	1
333	6190601	TENSIONER ARM SPACER	2
334	6190271	6" X 1 1/2" WHEEL WITH BRACKET - FOR 20" VAC-TRAC - INCLUDES	2
	6190281	WHEEL ONLY	2
335	6190611	WHEEL AXLE BOLT	2
	6190621	WHEEL BEARING KIT	2
336	9121990	3/8-16 HEX JAM NUT	2
337	9121450	5/16-18 HEX NUT WITH NY-LOK INSERT	4
338	9120900	1/4-20 HEX NUT WITH NY-LOK INSERT	4
339	6190291	2" CASTER WITH GRAY WHEELS	2
340	6190991	1/4-20 X 3/4 BUTTON HEAD CAP SCREW	2
341	6191001	1/4-20 X 3/4 FLAT HEAD SOCKET CAP SCREW	2
342	6191741	PAD DRIVER SPACER - 1/4"	1

# LOWER ASSEMBLY 20"



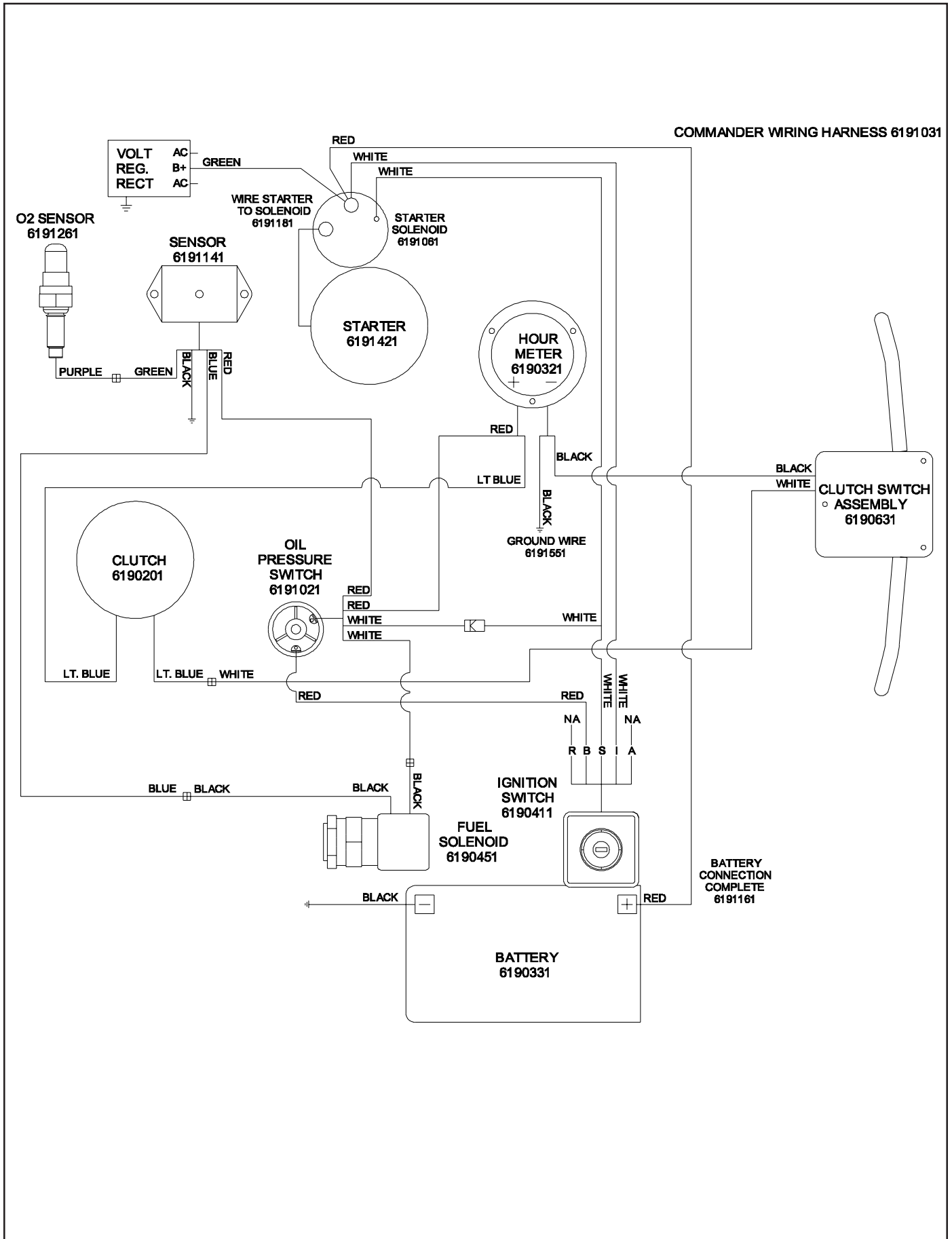
## **KAWASAKI FH 500 V 17 hp SERVICE PARTS**

NOTE: FOR NON-PROPANE SPECIFIC ENGINE COMPONENTS, REFER TO THE KAWASAKI SERVICE MANUAL (6191271).

<b><u>PART NO.</u></b>	<b><u>DESCRIPTION</u></b>	<b><u>QTY.</u></b>
2395761	CLAMP, TUBE (FOR OIL DRAIN HOSE)	1
8791180	1/2 X 3/4 VINYL TUBING (OIL DRAIN HOSE)	12"
6191011	MUFFLER	1
6191021	OIL PRESSURE SWITCH	1
6191031	WIRE HARNESS	1
6191041	AIR PRECLEANER - FOAM COOLING AIR FILTER	1
6191051	AIR PRECLEANER SUPPORT	1
6191061	STARTER SOLENOID	1
6191071	1 1/8 SPACER (FOR AIR CLEANER BOX)	2
6191081	M6 X 130 STUD (FOR FUEL LOAD BLOCK)	2
6191091	10-32 X 1 3/4 SCREW (FOR AIR CLEANER BOX)	2
6191101	RUBBER CAP (YELLOW FOR CARBURETOR)	1
6191111	FUEL LOAD BLOCK	1
6191121	MUFFLER CLAMP	1
6191131	RECOIL FILTER SUPPORT GASKET (BETWEEN FAN HOUSING AND AIR PRECLEANER SUPPORT)	1
6191141	AUTOMATIC SHUTDOWN SYSTEM	1
6191151	GROUND WIRE	1
6191161	BATTERY CONNECTION COMPLETE	1
6191171	WIRE - HOUR METER	1
6191181	WIRE - STARTER TO SOLENOID	1
6191191	CONVERTED ENGINE	1
6191211	EXHAUST MANIFOLD	1
6191221	PRE FILTER - FOAM ENGINE INTAKE	1
6191231	AIR FILTER - ENGINE INTAKE	1
6191241	OIL FILTER	1
6191251	SPARK PLUG - CHAMPION RCJ8Y	2
6191261	OXYGEN SENSOR	1
6191281	CYLINDER HEAD COMPLETE - CYLINDER #1 (RH SIDE)	1
6191291	CYLINDER HEAD COMPLETE - CYLINDER #2 (LH SIDE)	1
6191301	GASKET - CYLINDER HEAD	2
6191311	GASKET - VALVE COVER	2
6191321	CASE - ASSEMBLY - AIR FILTER	1
6191331	HOOK - AIR FILTER	2
6191341	GASKET - AIR CLEANER	1
6191351	GASKET - INSULATOR-INTAKE VACUUM PORT	2
6191361	GASKET - EXHAUST MANIFOLD	2
6191371	DIPSTICK KAWASAKI 17 HP	1
6191381	COIL - ASSEMBLY - IGNITION	2
6191391	VOLTAGE REGULATOR	1
6191401	COIL - CHARGING SYSTEM	1
6191411	BRASS PLUG 1/8 - #32 KAWASAKI 17HP	1
6191421	STARTER - KAWASAKI 17HP	1
6191431	INSULATOR-INTAKE VACUUM PORT	1
6192121	OIL DRAIN VALVE	1



# COMMANDER WIRING DIAGRAM



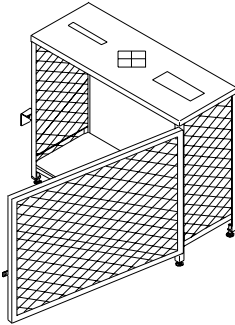
## **NOTES**

## ACCESSORIES



<b>PART NO.</b>	<b>PART DESCRIPTION</b>
NOTE:	ALL PADS COME 5 PADS PER CASE
7992051	20" LITE BLUE POLISH / BURNISH PAD - FOR SOFT FINISH
7992061	20" LITE HAIR BURNISH PAD - FOR ALL FINISHES
7992081	20" ULTRA HAIR HARD FINISH PAD - FOR HARD FINISH
7992091	20" ULTIMATE HAIR PAD - HARD FINISH AGGRESSIVE BURNISHING
7992751	27" LITE BLUE POLISH / BURNISH PAD - FOR SOFT FINISH
7992761	27" LITE HAIR BURNISH PAD - FOR ALL FINISHES
7992781	27" ULTRA HAIR HARD FINISH PAD - FOR HARD FINISH
7992791	27" ULTIMATE HAIR PAD - HARD FINISH AGGRESSIVE BURNISHING

6590801 L.P. TANK STORAGE CAGE





**NSS ® Enterprises, Inc.**

3115 Frenchmens Road, Toledo, Ohio 43607  
PHONE (419) 531-2121 FAX (419) 531-3761

**NSS ® Enterprises, Inc. European Distribution Centre**  
Unit II, Pinfold Trading Estate \* 55 Nottingham Road  
STAPLEFORD, NOTTINGHAM NG9 8AD ENGLAND U.K.  
PHONE: (44) 0115 939 1568 \* FAX: (44) 0115 949 0615