

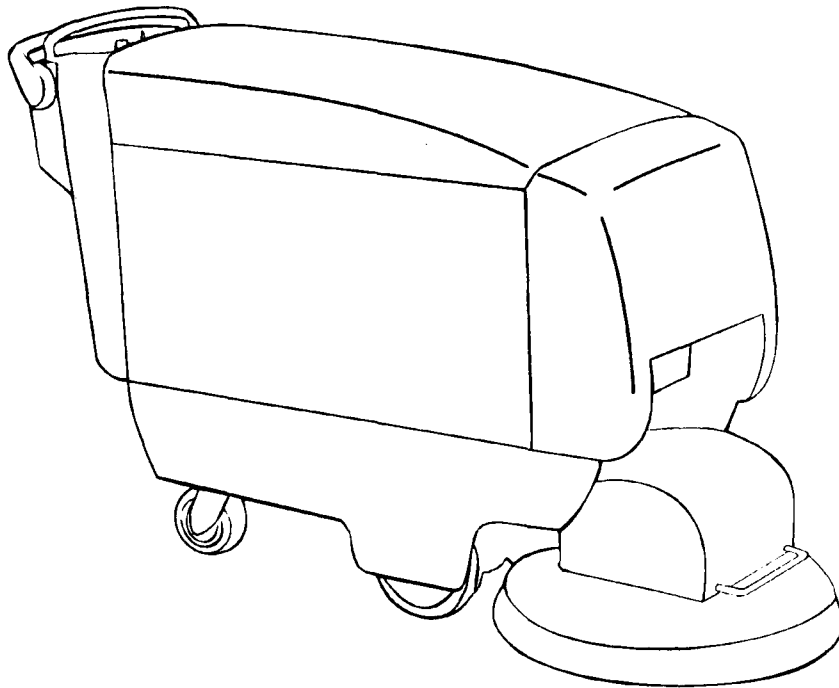


KENT

PARTS MANUAL

FOR COMMERCIAL USE ONLY
FLOOR MACHINE

DuraGloss KF-2024C



EDITION 1
JANUARY 1997
083463P-10

THE KENT COMPANY • 2310 INDUSTRIAL PARKWAY • P.O. BOX 1665 • ELKHART, IN 46515, U.S.A.
TEL: (219)293-8661 • (800)334-1083 • **FAX:** (219)295-8610

TABLE OF CONTENTS

SPECIFICATIONS	2
WIRING DIAGRAM	3
LOWER FRAME & MACHINE ASSEMBLY	4,5
BACK PANEL ASSEMBLY	6,7
CONTROL PANEL ASSEMBLY	8,9
PAD HEAD ASSEMBLY	10,11
PAD HEAD MOTOR LIFT ASSEMBLY	12,13

RECOMMENDED SPARE PARTS

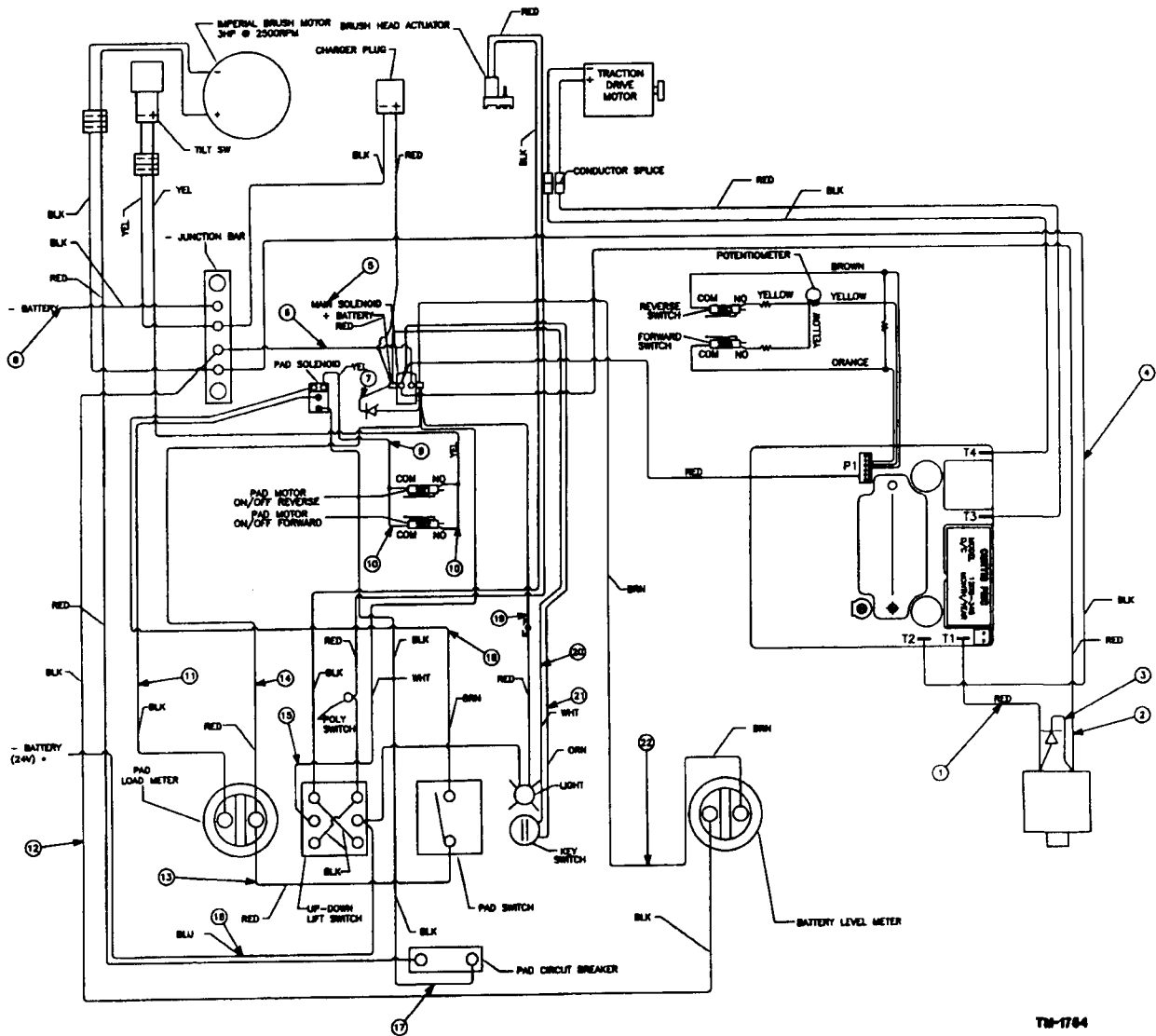
The following parts should be ordered and stocked to avoid possible down time in case of failure, or normal wear.

<u>PART NO.</u>	<u>DESCRIPTION</u>	<u>QTY.</u>
056448	CHAIN,ROLLER—#40,70LK&CONN	1
026045	SWITCH,RKR—SPST	1
026046	SWITCH,RKR—DPDT	1
026914	SWITCH,BREAKER—65VDC,75A,SP	1
027162	CIRCUIT BREAKER—PTC,SELFRESET	1
056949	HOSE,BLK VINYL-1.5IDx33L	1
026584	STARTER-SWITCH-LOCKING	1
028143	BRUSH,MTR—FOR 23286	1
039496	BAG,CLOTH—DUST COLLECTOR	1
035294	ASM,SEAL—VELCRO & RUBBER	1
026573	CHARGER PLUG—ANDERSON	1
026603	SWITCH,LVR—SPDT,20A,125-250V	1
026198	CIRCUIT BREAKER—30AMP,SCR	1

SPECIFICATIONS

Controls:	Light effort, Push/Pull for forward or reverse operation. Variable speed control knob, ammeter, voltmeter, pad pressure switch, keylock, and circuit breaker.
System Voltage:	36 VDC
Motor, Traction Drive:	.75 HP, 200 rpm, 22 amp, 36 VDC, 56 frame thru chain and differential to drive wheels.
Speed Control:	Forward or reverse - fully variable via electronic controller to 250 fpm (76.2 mpm) forward or 125 fpm (38.1 mpm) reverse. Fully variable knob operated potentiometer.
Motor, Pad Driver:	3.0 HP, 2500 rpm, direct drive, 36 VDC.
Motor, Pad Height:	36 VDC, 41.7 in./lb., 60 rpm, motor/gearbox assembly, w/10 amp auto reset circuit breaker.
Pad Holder:	19 in. (48.3 cm) floppy plastic pad driver w/positive screw holder lock w/tilt safety switch.
Burnishing Width:	19 in. (48.3 cm)
Pad Pressure:	30-50 lbs depending upon floor surface.
Wheels	
Traction Wheels:	Two (2) 8 in. (20.3 cm) Dia.
Caster Wheels:	Two (2) 5 in. (12.7 cm) Dia.
Frame:	All welded 11 ga. steel with epoxy powder coating. 7 ga. gusseting
Outer Shell:	High-density molded polyethylene and stainless steel covers.
Pad Cover:	11 ga. steel with epoxy powder coating.
Battery Charger:	External, electronic.
Dust Control Filter:	Cloth bag w/slide, 180 in. ² area / 190 in. ³ volume (1161 cm ² / 3113 cm ³).
Noise Level dB(A):	76 @ Operator
Dimensions	
Handle:	38 in. to floor (96.5 cm)
Length (overall):	61 in. (155 cm)
Height (overall):	38 in. (96.5 cm)
Width (body):	20 in. (50.8 cm)
Width (pad head):	23.5 in. (59.7 cm)
Weight	
Machine:	300 lbs. (135.9 kg)
Shipping:	430 lbs. (194.8 kg)
Machine with Batteries	720 lbs. (326.2 kg)

WIRING DIAGRAM

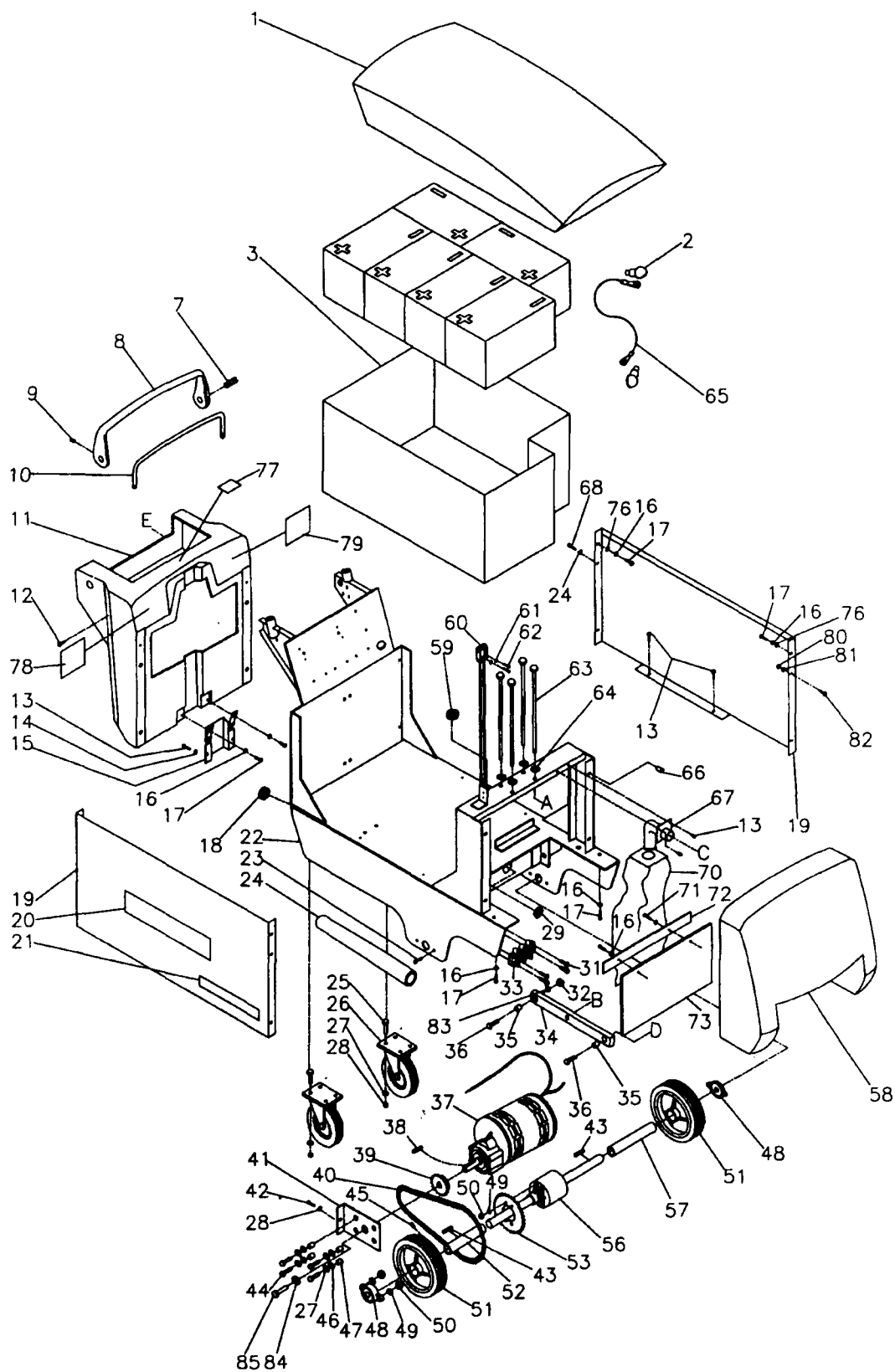


WIRING DIAGRAM PARTS LIST

DET. PART NO.	DESCRIPTION	QUANT.	DET. PART NO.	DESCRIPTION	QUANT.		
1	026169-5	ASM,WIRE—10GA,RED,8.0L,COMB	1	12	026086	ASM,WIRE—16GA,BLK,15.0L,RINGS	1
2	026169-4	ASM,WIRE—10GA,RED,10.0L,COMB	1	13	026087	ASM,WIRE—16GA,RED,6.0L,COMB	1
3	026171	ASM,DIODE—310 RINGS	1	14	0260219-3	ASM,WIRE—8GA,RED,23.0L,RINGS	1
4	026169-3	ASM,WIRE—10GA,BLK,15.0L,COMB	1	15	026093	ASM,WIRE—16GA,WHT,20L,COMB	1
5	026219-3	BATT. CABLE,4GA—30.0L,RED	1	16	026197-6	ASM,WIRE—16GA,BLU,33.0L,COMB	1
6	026091	ASM,WIRE—16GA,BLU,13.0,RINGS	1	17	026058	ASM,WIRE—8GA,BLK,23.0L,RINGS	1
7	026172	ASM,WIRE—16GA W/DIODE, .31 RGS	1	18	026088	ASM,WIRE—16GA,BRN,15.0L,COMB	1
8	026219-2	BATT. CABLE,4GA—18.0L,BLACK	1	19	026069	ASM,WIRE—16GA,RED,18.0L,COMB	1
9	026075	ASM,WIRE—16GA,YEL,13.0L,COMB	1	20	026074	ASM,WIRE—16GA,WHT,20.0L,RINGS	1
10	026173	ASM,WIRE—18GA,YEL,2 CNDCT,QDS	2	21	026100	ASM,WIRE—16GA,ORN,20.0L,RINGS	1
11	026058	ASM,WIRE—8GA,BLK,23.0L,RINGS	2	22	026085	ASM,WIRE—16GA,BRN,18.0L,RINGS	1

TM-1754L1

LOWER FRAME & MACHINE ASSEMBLY

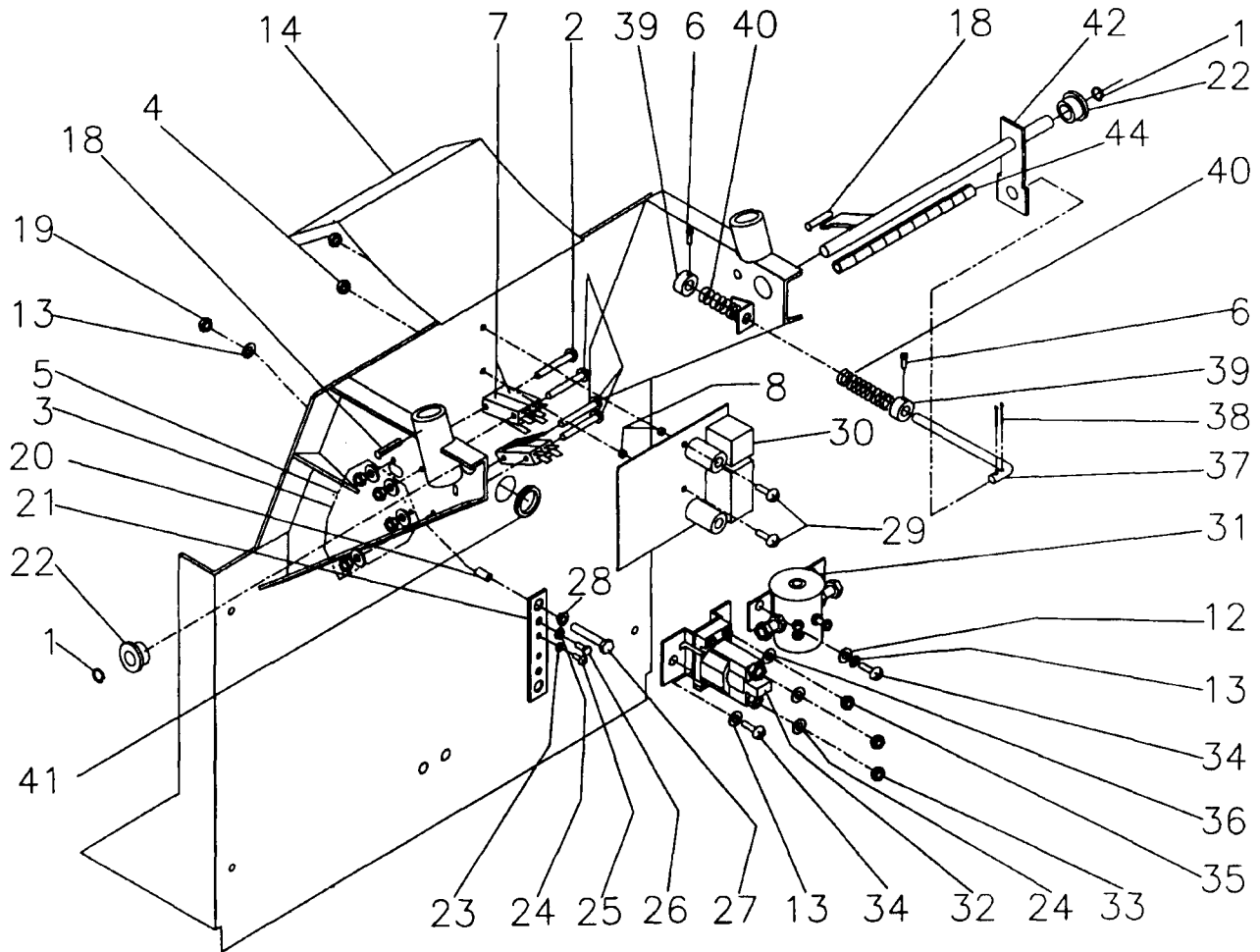


TM-1750

LOWER FRAME & MACHINE ASSEMBLY PARTS LIST

DET.	PART NO.	DESCRIPTION	QUANT.	DET.	PART NO.	DESCRIPTION	QUANT.
1	057105	COVER, TOP—DURA GLOSS, FLAMETR.	1	43	056527	KEY, SQUARE—250SQ, 1.50L	2
2	054186	BOOT, INSULATOR—BATT TERMINALS	10	44	003264	SCR CAP HEX HD .375-16X1.25L	4
3	056874	BOX, BATTERY—MACHINED, KF2025B	1	45	002244	SCR SET CUP PT .250-20X.625L	2
7	035229	ASM, SHAFT—W/SCREW	2	46	004384	WSHR FLT .406ID.875OD.064T STL	4
8	056594	HANDLE, ACTUATOR—AUTOS, PAINTED	1	47	056681	SPACER, STL—.375X.625, .400L	4
9	005387	SCR SET CUP PT .312-18X.500L	2	48	027221	BRG, BALL, ANLR, SLD—SELF ALGN.	2
10	056595	HANDLE, STL—.625DIA, PAINTED	1	49	004212	WSHR LK .326ID.586OD.078TSPLT	8
				50	003349	NUT, HEX—.312-18, ZN PLT	8
11	056945	COVER, CONTROL—MACH, DURAGL	1	51	056998	WHEEL—8.0DIA, 1.00BORE, 1.56HUB	1
12	002344	SCR CAP SOC HD .250-20X.500L	2	52	056892	TUBE, STL—1.00ID X 3.413L	1
13	002371	SCR TPG F PAN HD 10-24X.625L	12	53	056887	SPROCKET, CHAIN—#40, 32T, MACH	1
14	004443	WSHR LK .200ID.375OD.022T INT	2	56	056888	DIFFERENTIAL—DRIVE, KF2025B	1
15	056924	COVER, WIRE—14GA X 5.00 X 5.60	1	57	056893	TUBE, STL—1.00ID X 4.408L	1
16	038531	WSHR LK .265ID.442OD.025T INT	10	58	057104	COVER, FRONT—DURA GL FLAMETR	1
17	002247	SCR MACH RD HD .250-20X.625L	8	59	056872	GROM—.75ID, .88MHD, .12PHN	1
18	056871	GROM—1.25ID, 1.38MHD, .12PNL	1	60	026573	CHARGER PLUG—ANDERSON CON	1
19	057161	PANEL, SIDE—16GASS, 17.125X33.5	2				
20	056928	LABEL, IDENT—KENT, KF2025B	2	61	004250	WSHR LK .148ID.250OD.031TSPLT	2
21	056868	LABEL, IDENT—DURAGLOSS	2	62	001244	SCR MACH RD HD 6-32X.750L	2
22	035298	WDMT—BURNISHER FRAME, KF2025B	1	63	005629	SCR CAP HEX RD .375-16 X 12.0	4
23	003249	SCR CAP HEX HD .312-18X1.25L	4	64	004384	WSHR FLT .406ID.875OD.064T STL	4
24	056999	TUBE, PLSTC—2.00DIA X 13.25	1	65	026219-1	ASM, WIRE—6GA, BLK, 10.2L, RINGS	5
25	003262	SCR CAP HEX HD .375-16X1.00L	8	67	035269	WDMT, DUST ATTACHMENT—KF2025B	1
26	056568	CASTER, SWIVEL—5.0 DIA, 700 LB	2	68	001448	SCR TPG F PAN HD 10-24X.250L	4
27	004214	WSHR LK .390ID.683OD.094TSPLT	12	69	001298	SCR MACH RD HD 10-24X.750L	4
28	003294	NUT, HEX JAM—.375-16, ZN PLT	9	70	039496	BAG, CLOTH—DUST COLLECTOR	1
29	006143	NUT, SPECIAL—1.00 PIPE, HEX LOC	1				
				71	002243	SCR CAP HEX HD .250-20X.625L	2
31	005482	SCR TPG F PAN HD 10-24X.875L	4	72	056918	PLATE, STL—16GA X 1.50 X 15.25	1
32	003368	NUT, HEX LOCK—.375-16, ZN PLT	4	73	056919	RUBBER, CURTAIN—.125X8.75X15.5	1
33	026922	BLOCK, TERMINAL—2 POLE, 70 AMPS	1	76	005373	WSHR FLT .281ID.625OD.062T STL	4
34	056883	BAR, STL—.50 X 1.00 X 14.00L	2	77	050871	LABEL, INSTR—WRN, FLAMMABLE	1
35	056882	BSHG, SLV—.50OD.384ID.540L, STL	4	78	057008	LABEL—BATTERY MAIN SCH, BURN	1
36	003264	SCR CAP HEX HD .375-16X1.25L	4	79	057007	LABEL—BATTERY WIRING, BURN	1
37	026170	ASM, GEARMTR—075HP, FQD'S, BURN	1	80	005480	NUT, HEX LOCK—10-24, NYLOC	4
38	045815	KEY, SQUARE—.250 SQ, .875 LONG	1				
39	056505	SPROCKET, CHAIN—#40, .500P, 17T	1	81	004208	WSHR FLT .281ID.500OD.036T STL	4
40	056448	CHAIN, ROLLER—#40, 70LK&CONN	1	82	005482	SCR TPG F PAN HD 10-24X.875L	4
				83	004384	WSHR FLT .406ID.875OD.064T STL	2
41	035106	BRACKET—DRIVE MOTOR	1	84	005483	WSHR FLT .438ID1.00OD.104T STL	1
42	002332	SCR CAP HEX HD .375-16X1.75L	1	85	003244	SCR CAP HEX HD .312-18X.750L	1

BACK PANEL ASSEMBLY

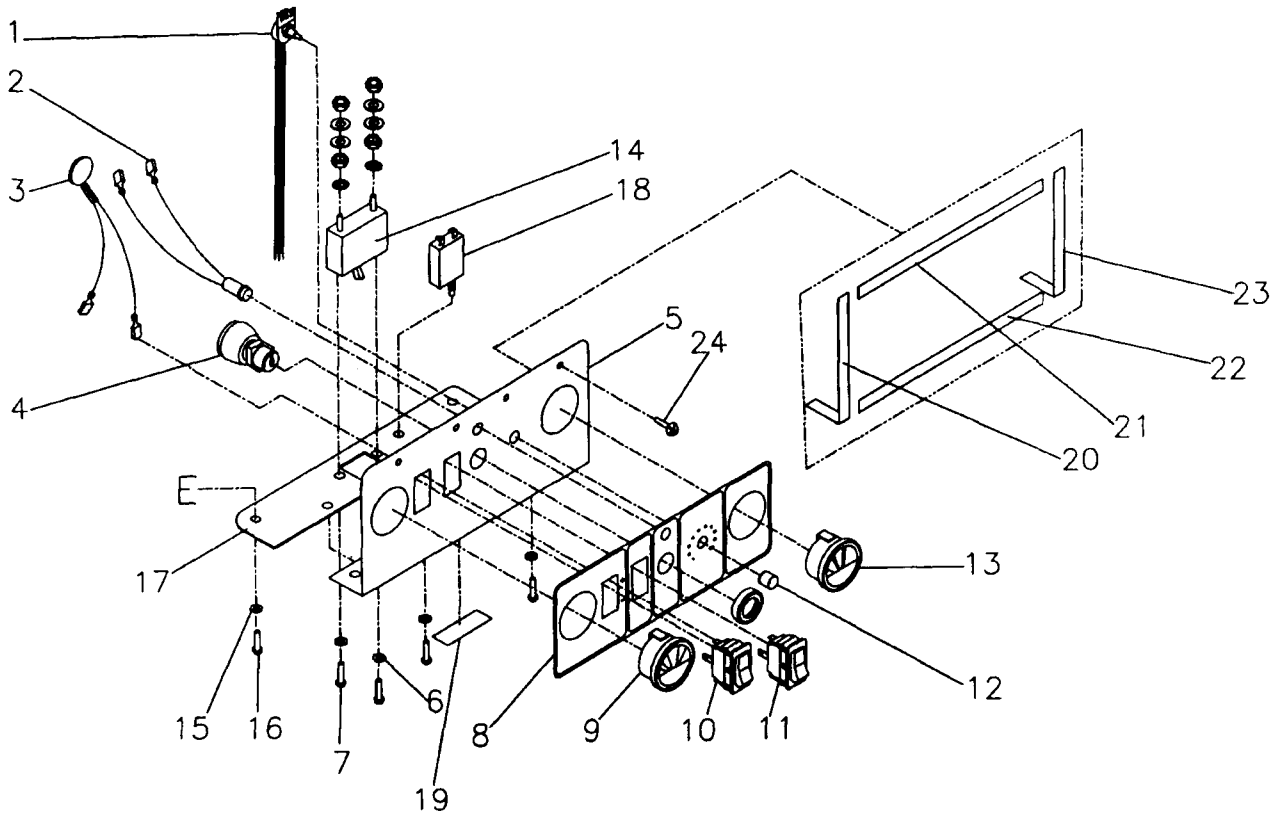


TM-1753

BACK PANEL ASSEMBLY PARTS LIST

DET.	PART NO.	DESCRIPTION	QUANT.
1	004351	RING,RTNG—EXT.,500 SHAFT,"E"	2
2	001489	SCR MACH RD HD 6-32X1.75L	4
3	003274	NUT,HEX— 6-32,ZN PLT	4
4	003415	NUT,HEX LOCK— 8-32,NYLOC,ZN	2
5	004250	WSHR LK .148ID.250OD.031TSPLT	4
6	001343	SCR CAP SOC HD 10-24X.500L	2
7	026603	SWITCH,LVR—SPDT,20A,125-250V	4
8	057428	SPACER,ALUM—.187X.375, .375L	2
12	005213	WSHR FLT .250ID1.000D.062T STL	1
13	002278	WSHR LK .262ID.489OD.062TSPLT	6
14	026164	INSULATOR,ELEC—MYLAR,11.5X7	1
18	005624	PIN,ROLL—.312DIA,1.000"L	2
19	003283	NUT,HEX—.250-20,ZN PLT	2
20	048268	SPACER,PLSTC—.500X.625, .500L	2
21	048269	BAR,STL—.187X.750X 4.00 LONG	1
22	027131	BRG,FLANGE—.500ID.750OD.500W	2
23	005297	WSHR LK .200ID.334OD.047TSPLT	2
24	004214	WSHR LK .390ID.683OD.094TSPLT	4
25	001283	SCR MACH RD HD 10-24X.375L	2
26	003242	SCR CAP HEX HD .312-18X.500L	2
27	002269	SCR CAP HEX HD .250-20X1.25L	2
28	004369	WSHR SHLDR.250ID.562OD.120T,NY	2
29	005410	SCR MACH RD HD 8-32X1.00L	2
30	027237	CONTROL—DC,AUTOS,CRTS,36V	1
31	G741200	SOLENOID—	1
32	026504	SOLENOID—SWITCH,SPNO,36VDC	1
33	003348	NUT,HEX JAM—.312-24,STL	2
34	001415	SCR TPG F PAN HD .250-20X.500L	4
35	003278	NUT,HEX— 10-32,ZN PLT	2
36	004443	WSHR LK .200ID.375OD.022T INT	2
37	056962	ROD,STL—.297DIA.,5.00 LONG	1
38	004297	PIN,COTTER—.094X .750 LONG	2
39	048987	COLLAR-CENTERING SPRING	2
40	056961	SPRING,COMP .48OD 2.25L .045WD	2
41	056871	GROM—1.25ID,1.38MHD,.12PNL	1
42	035384	WDMT,SHAFT—ACTUATOR	1
44	057176	TUBE,PLSTC—SLIT,810DX11.0"L	1

CONTROL PANEL ASSEMBLY

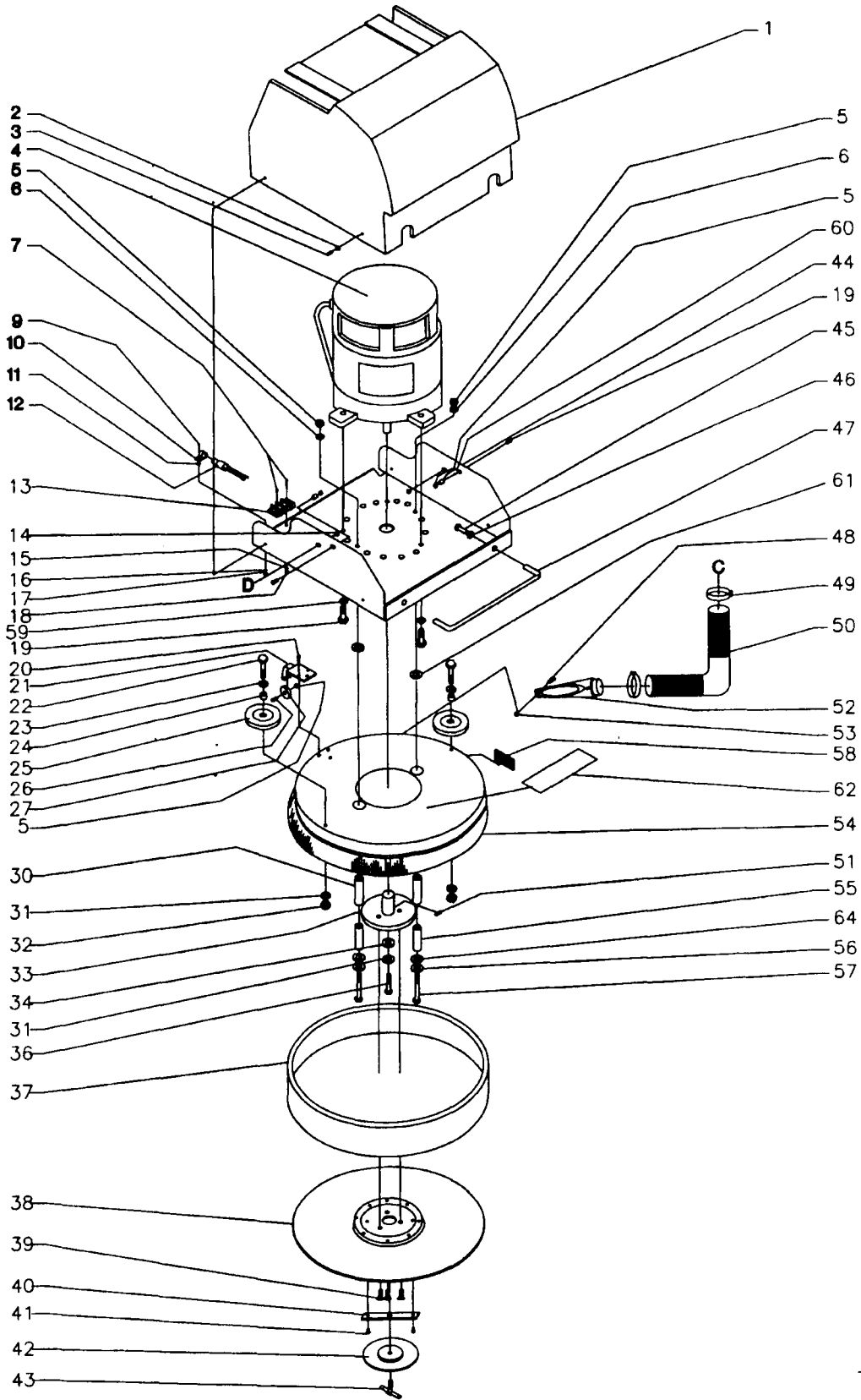


TM-1752

CONTROL PANEL ASSEMBLY PARTS LIST

DET.	PART NO.	DESCRIPTION	QUANT.
1	026158	ASM,POTENTIOMETER—W/RESISTER	1
2	026092	ASM,LIGHT—28V,RED,TERMS	1
3	027162	CIRCUIT BREAKER—PTC,SELFRESET	1
4	026584	STARTER-SWITCH-LOCKING	1
5	057678	PLT,STL—16GA,CB'S PNL,BURN	1
6	004249	WSHR LK .150ID.320OD.022T EXT	2
7	001456	SCR MACH PAN HD 6-32X.250L	2
8	056869	LABEL,INSTR—BURN CONTROL PNL	1
9	027160-1	AMMETER,DC—0-90AMPS,RD BODY	1
10	026046	SWITCH,RKR—DPDT	1
11	026045	SWITCH,RKR—SPST	1
12	056596	KNOB,PLASTIC—BLACK,.92DIAX.95	1
13	027161	VOLTMETER—27-45 VDC, ROUND	1
14	026914	SWITCH,BREAKER—65VDC,75A,SP	1
15	004443	WSHR LK .200ID.375OD.022T INT	4
16	223220	SCR MACH RD HD 10-32X.375L	4
17	035400	WDMT,PLATE W/NUTS—CB BURN	1
18	026198	CIRCUIT BREAKER—30AMP,SCR TRM	1
19	057783	LABEL,INSTR—BURN CB PNL	1
20	057309	GASKET—.125x.500,8.656R	1
21	057306	GASKET—.125x.500,13.75L, TOP	1
22	057310	GASKET—.125x.500,11.75L	1
23	057308	GASKET—.125x.500,8.656L, LEFT	1
24	002382	SCR TPG F PAN HD 10-10X.500L	4

PAD HEAD ASSEMBLY

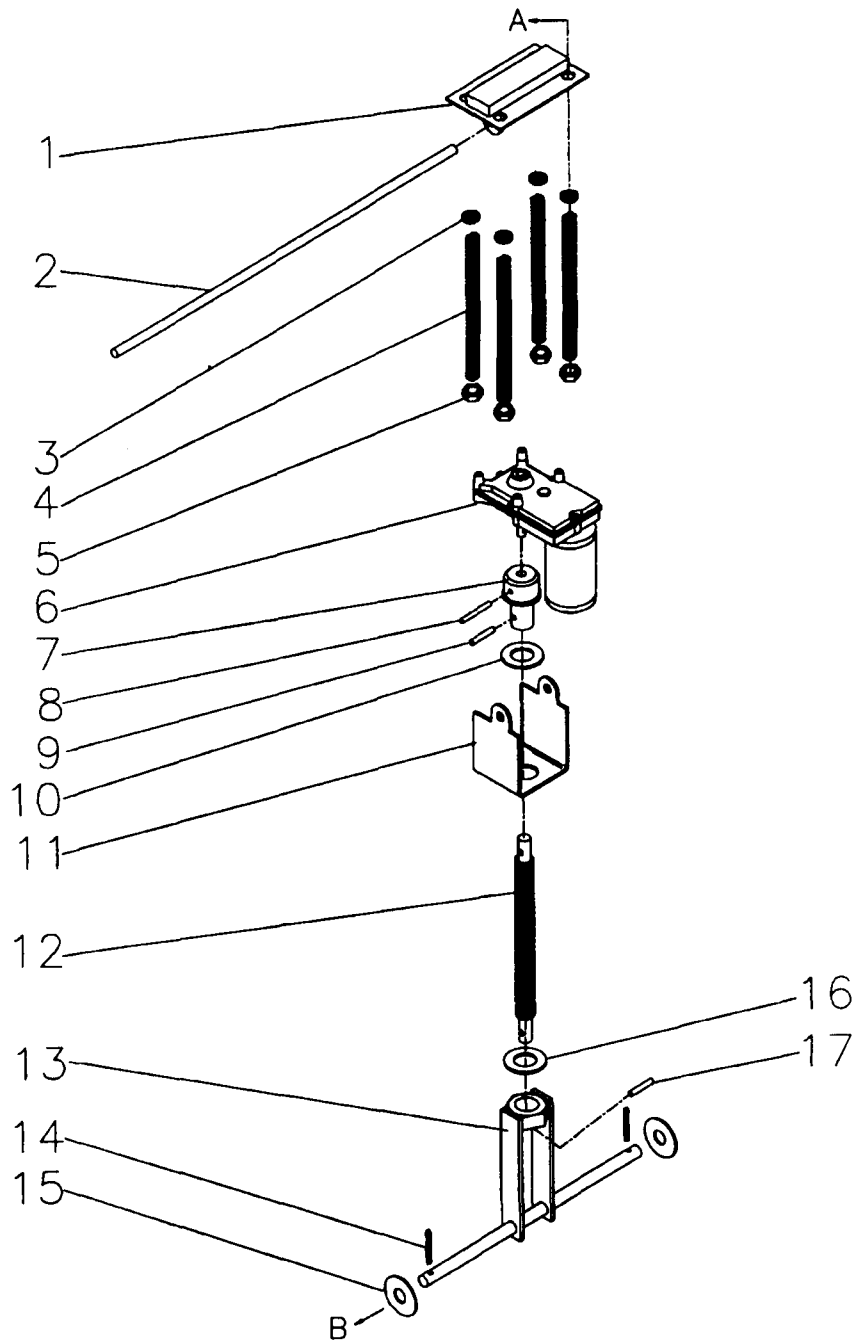


TM-1473

PAD HEAD ASSEMBLY PARTS LIST

DET.	PART NO.	DESCRIPTION	QUANT.	DET.	PART NO.	DESCRIPTION	QUANT.
1	056944	COVER,MOTOR—DURAGLOSS,MACH	1	33	033915	WDMT,PLATE/HUB—DRIVE,KF-2001B	1
2	005407	WSHR FLT .203ID.562OD.045T STL	4	34	052765	SPACER,STL—1.120X.343X.25TH	1
3	002371	SCR TPG F PAN HD 10-24X.625L	4	36	223156	SCR CAP HEX HD .312-24X.750L	1
4	026041	ASM,3HP MOTOR W/TERM RINGS	1	37	035294	ASM,SEAL—VELCRO & RUBBER	1
5	005479	NUT,HEX LOCK—.250-20,NYLOC,ZN	4	38	020349	HOLDER,PAD—19.00",PLASTIC	1
6	005373	WSHR FLT .281ID.625OD.062T STL	3	39	001493	SCR MACH FLAT HD—.375-16X1.0L	3
7	001263	SCR MACH RD HD 8-32X.750L	2	40	052736	BAR,STL—.179X1.25X.6.12L	1
9	001295	SCR MACH RD HD 10-24X.625L	1				
10	056903	CLAMP,LOOP—.500 DIA.,NYLON	1	41	002380	SCR TPG F PAN HD 10-10X.625L	2
				42	052373	CLAMPING PLATE—H.S.PAD HOLDER	1
11	050406	SPACER,NYLON—.203X.437, .125L	1	43	035270	WDMT,PAD RETAINER SCR—KF2025B	1
12	026067	SWITCH,TILT—MERCURY,36V,RINGS	1	44	056885	FRAME,CHANNEL—11GA,KF2025B	1
13	027163	TERMINAL BLOCK—2-POLE,RING	1	45	002253	SCR CAP HEX HD .250-20X.750L	2
14	003368	NUT,HEX LOCK—.375-16,ZN PLT	2	46	002278	WSHR LK .262ID.489OD.062TSPLT	2
15	004522	WSHR LK .176ID.831OD.023TEXTSS	2	47	048071	HANDLE,STL	1
16	004253	WSHR LK .204ID.410OD.025T EXT	1	48	005457	SCR MACH PAN HD 10-24X1.00L	2
17	003279	NUT,HEX— 10-24,ZN PLT	1	49	046688	CLAMP,HOSE—1.75 MAX DIA,WORM	2
18	003276	NUT,HEX— 8-32,ZN PLT	2	50	056949	HOSE,BLK VINYL-1.5IDx33L	1
19	002256	SCR CAP HEX HD .250-20X1.00L	2				
20	005316	SCR TPG F PAN HD 10-24X.375L	3	51	005387	SCR SET CUP PT .312-18X.500L	2
				52	054222	NOZZLE—1.5DIA,6.0L,ABS	1
21	057152	BRACKET,STL—WHEEL,DURAGLOSS	1	53	005480	NUT,HEX LOCK— 10-24,NYLOC	2
22	003246	SCR CAP HEX HD .312-18X1.00L	2	54	035278	WDMT,COVER—20"PAD,KF2025B	1
23	004218	WSHR FLT .344ID.750OD.060T STL	2	55	057107	TUBE,STL—.500D.,.282ID,1.50L	2
24	053699	SPACER,STL—.312X.437, .43L	2	56	005526	WSHR FLT .281ID1.25OD.063T STL	2
25	053720	WHEEL—4.00DIA.,.438BORE,.688HB	2	57	002283	SCR CAP SOC HD .250-20X2.50L	2
26	002410	SCR CAP HEX HD .250-20X3.00L	1	58	054047	RETAINER,LOOPS—VELCRO,3.75L	3
27	057153	ROLLER—DURAGLOSS,1.00 ODX1.94	1	59	004254	WSHR LK .267ID.510OD.028T EXT	3
30	057543	TUBE,VINYL—.500X.825,1.50L	2	60	052225	SPACER,PHEN—.250X.500, .562L	2
31	004212	WSHR LK .326ID.586OD.078TSPLT	3	61	004525	WSHR FLT .265ID 1.250OD .179TH	2
32	003349	NUT,HEX—.312-18,ZN PLT	2	62	052826	LABEL,INSTR—CAUTION	1
				64	048140	WSHR NEOPRENE .250X2.25X.187T	2
				65	002253	Scrubbers	3

PAD HEAD MOTOR LIFT ASSEMBLY



TM-1751

PAD HEAD MOTOR LIFT ASSEMBLY PARTS LIST

DET.	PART NO.	DESCRIPTION	QUANT.
1	035274	WDMT,LIFT PLATE—KF2025B	1
2	056910	ROD,STL—,375DIA X 19.00	1
3	004545	WSHR,SHOULDER—,375ID,NYLON	4
4	056897	SPRING,COMP .54D 11.75L .080WD	4
5	003368	NUT,HEX LOCK—,375-16,ZN PLT	4
6	026103	MTR,DC—36V,MACHINED	1
7	056951	COUPLING,LIFT SCREW—BURNISHER	1
8	005467	PIN,ROLL—,125 DIA,1.750L	1
9	005450	PIN,ROLL—,187 DIA, .880L	1
10	004546	WSHR FLT 1.00ID1.450D.065T,NYL	1
11	056917	BRKT,STL—11GA X 2.50 X 3.96	1
12	056952	ROD,STL,THDD—,75X 8.00"CRS	1
13	035318	WDMT—LIFT MECHANISM,BURNISHER	1
14	005200	PIN,COTTER—,125X1.000 LONG	2
15	004547	WSHR,FLT .516ID1.25OD.062T,NYL	2
16	004499	WSHR FLT .594ID1.12OD.063T STL	1
17	004364	PIN,ROLL—,125 DIA,1.000L	1

THE KENT LIMITED WARRANTY

Your Kent equipment which has been manufactured, tested, and inspected in accordance with carefully specified engineering requirements, is warranted to be free from defects in material and workmanship. This warranty is, however, subject to the following qualifications, conditions, and limitations which are set forth to provide you and all users of the equipment with information concerning the duration, extent, availability, and applicability of the Kent limited warranty, the procedure to be taken to obtain its performance, and other information concerning the Kent warranty policy.

The Kent Limited Warranty is extended to the original end user as follows

Automatic scrubber vacs (excluding the KA33BR) and all battery operated burnishers carry a three year parts replacement and one year labor warranty. Batteries are warranted on a prorated basis for one year. Battery chargers are warranted by the manufacturer for one year. Propane engines are warranted by the manufacturer for a period of two years (one year on the valve train) for Briggs & Stratton engines, and 3 years on Onan engines.

Replacement parts are covered for the remainder of the machines warranty or 90 days, whichever is longer.

All sweepers, all pressure washers, all propane burnishers, and the KA33BR have a one year parts and labor warranty.

Poly components carry a ten year replacement warranty with one year service labor. This warranty will not cover damage attributable to the following:

- : Improper, unreasonable or negligent use or abuse of the equipment.
- : Use of the equipment with hot water (over 130 deg. F, 54 deg. C).
- : "Warping", "Creepage", or "Distortion" of the part so long as the same does not interfere with normal operation.
- : Abrasions or punctures of the equipment.

The start date of the warranty coverage shall be the date the machine was shipped from the factory, or with proof of purchase, the purchase date of the original end user. The start date of the warranty shall not exceed one year from the date that the unit leaves the factory.

Parts of Kent Equipment not covered by the Kent Limited Warranty

Certain parts of Kent Equipment require replacement in the ordinary course of use due to normal wear by reason of their characteristics. These are normal wear items such as cords, squeegee blades, belts, gaskets, bumpers, carbon brushes, filters, hoses, bags, pad holders, brushes etc.

Exceptions and Exclusions from Warranty

Defects, malfunctions, failure, or damage of the equipment caused by improper care, unreasonable or negligent use or abuse of the equipment are excluded from this warranty. If repair is done to the equipment by anyone other than those designated as authorized to perform such work without having obtained factory authorization in writing, the Kent Company at its sole option, may determine that this warranty will not apply and that reimbursement for such repair will not be made because of the failure to comply with such factory instructions.

Procedure to be taken to obtain performance of warranty repair

To secure repair of the equipment or any warranted parts under this warranty, the following procedure must be taken. The inoperative equipment or warranted parts together with satisfactory evidence of the purchase date, must be delivered, with shipping and delivery charges prepaid, to one of the following:

- : The dealer from whom purchased.
- : Any Kent distributor's service department in the United States.
- : Any Kent authorized service station in the United States.

If you are unable to locate any of the foregoing, you may write or otherwise communicate with The Kent Company for instructions before repair service is performed by anyone else. In such event, The Kent Company will provide either the location of a Kent authorized service department or other factory instructions. In the event that no local service department is available, Kent at its discretion will repair or replace the part or equipment at the factory, the products will be returned to the owner freight prepaid. No warranty will be honored without proof of purchase, the model number, and serial number if applicable.

Replacement

In the event of a defect, malfunction, or failure of your Kent equipment or any warranted part to conform with this warranty, The Kent Company may, at its sole option and own expense, replace the equipment or any warranted part with another new identical or reasonably equivalent model or part in lieu of repairing the defect.

No refund of purchase price

The Kent Company will not, as a matter of its warranty policy, refund the customer's purchase price.

Warranty registration

Your Kent Company distributor from whom you purchased your equipment is responsible for the registration of your warranty with the factory. We ask that you cooperate with your distributor in supplying the necessary information on the warranty card so that we may better serve you. Any information or questions that you may have concerning your Kent equipment or this warranty may likewise be secured from the factory. This warranty gives you specific legal rights, and you may also have other rights which vary from state to state.