

Go-Vac™



PARTS LIST

Advance MODELS 56100349, 56100432

This parts list is for machines after serial number 470875

All models covered in this manual are OBSOLETE



**Nilfisk
Advance**

setting standards

revised 3/01 Form Number 56042259

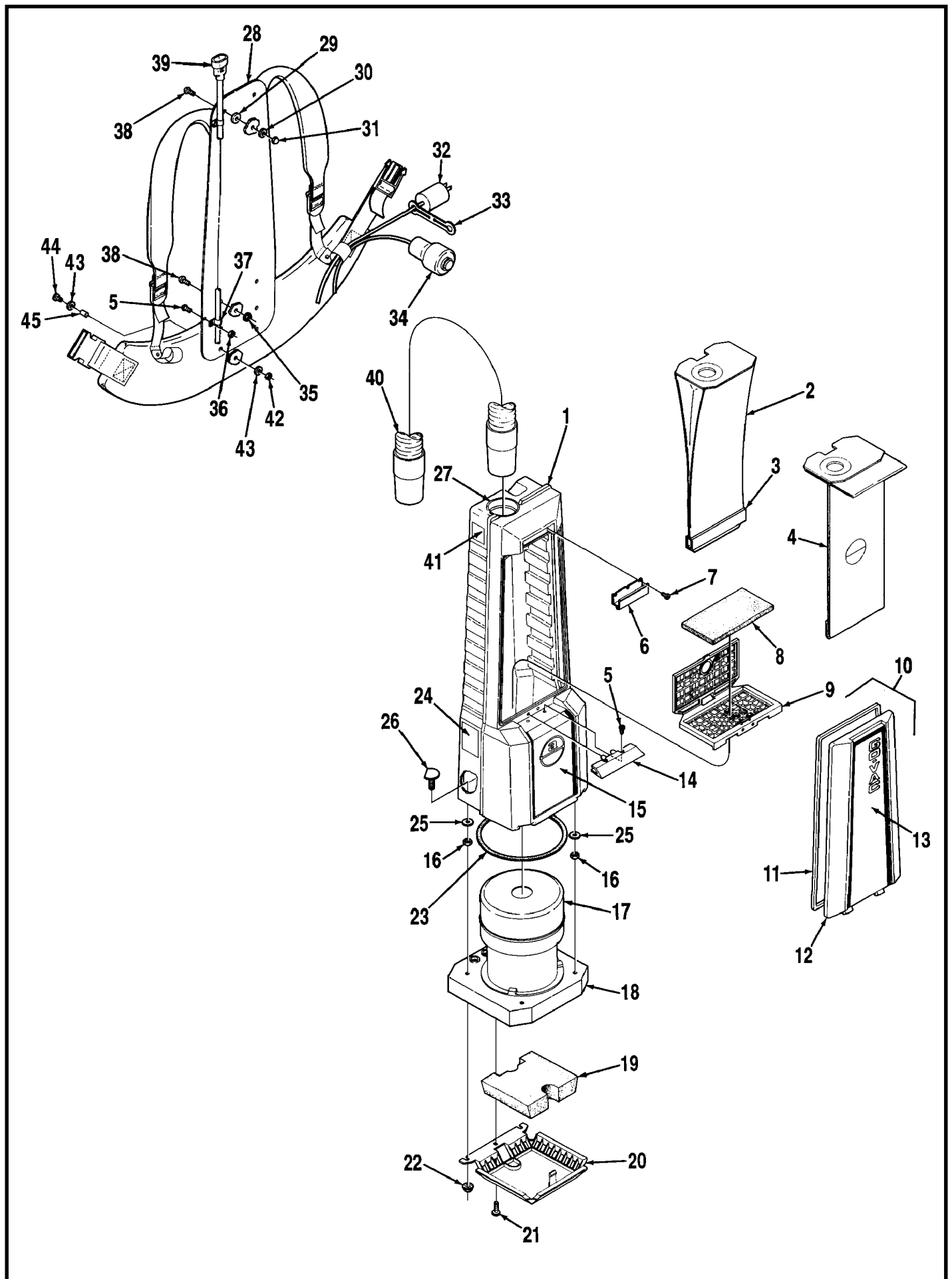
TABLE OF CONTENTS

DESCRIPTION	PAGE
Housing and Harness	1-2
Vacuum Motor Assembly	3-4
Wiring Diagrams	5-6
Optional Accessories	7

WHEN ORDERING PARTS

- * Use the 8 digit numbers from the "Part No." columns in this parts list.
- * Specify the model and serial number of the machine.
- * Use the space below to record the model and serial number for future reference.

Model _____ Serial No. _____

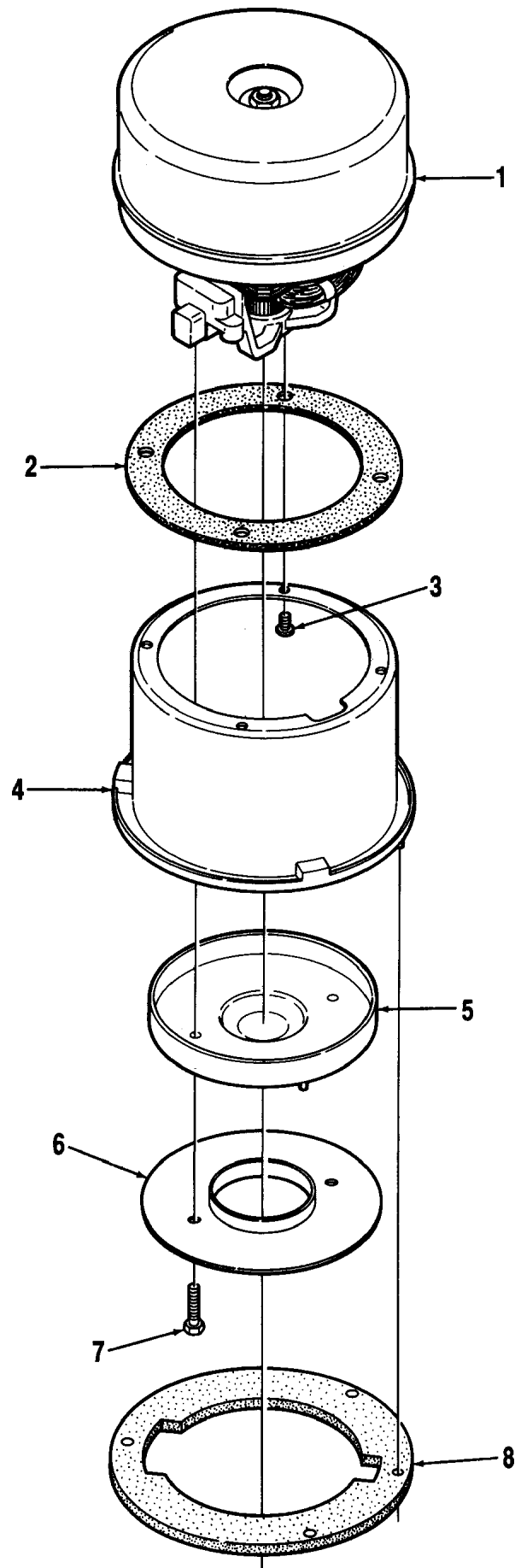


GO-VAC

Item	Part No.	Qty	Description	Item	Part No.	Qty	Description
1	56100371	1	Housing	29	56151807	2	Washer
2	56323195	1	Cloth Bag	30	56002098	2	1/4 Flat Washer
3	56320676	1	Clip	31	56172066	2	1/4-20 SS Acorn Nut
4	56323153	1	Paper Bag, pkg of 6**	32	56100352	1	Power Cord (std)
*	56323251	1	Bio-Bag™ (pkg og 6) (optional accessory, not included)		56100436	1	Power Cord (400hz)
5	56002124	4	#10-24 x 5/8 Screw	33	56100369	1	Plug Retainer
*	56002832	2	#10-24 Nut, Hex Nyl Loc-Thin	34	56100356	1	Switch Assembly (std)
6	56323143	1	Latch TSB 561, G-9		56100437	1	Switch Assembly (400hz)
7	56003066	3	Screw		56323741	1	Switch
8	56323158	1	Internal Filter		56100359	1	Right Switch Housing
9	56323161	1	Internal Filter Housing		56100360	1	Left Switch Housing
10	56100365	1	Cover Assy (#11-13) TSB 562, G-8		56320307	1	Cord
11	56323165	1	Gasket		56900484	2	Screw
12	56323151	1	Cover		56706157	1	Screw
13	56015180	1	Decal, Go-Vac	35	56002840	2	1/4-20 Nut, Hex Nyl Loc-Thin
14	56323146	1	Stop	36	56328855	2	#10-24 Nut Clamp
15	56014945	1	Decal, Housing	37	56300152	2	P-Clamp
16	56002025	4	5/16-18 Nut	38	56002066	4	1/4-20 x 5/8 Screw
17	56323172	1	Vacuum Motor Assembly	39	56100354	1	Cord Set
18	56100361	1	Deflector	40	56100363	1	Hose
*	56163015	3	Strain Relief	41	56015160	1	Decal, Power (std)
19	56323275	1	Exhaust Filter	42	56002768	4	#10-24 Nut, Hex Nyl Loc
20	56323160	1	Exhaust Filter Retainer	43	56203874	8	Washer
21	56900233	3	#10-24 x 1 Screw	44	56002231	4	#10-24 x 1-1/2 Screw
22	56002826	4	5/16-18 Nut, Hex Nyl Loc-Thin	45	56263856	4	Spacer
23	56323157	1	Gasket	*	56100355	1	Extension Cord
24	56014369	1	Decal, Warning	*	56320319	3	Strain Relief
25	56323244	4	Urethane Washer				
26	56323258	4	5/16-18 Stud				
27	56323142	1	Bag Fill Tube				
28	56100370	1	Harness				

* = Not Shown

** = One sample bag included with machine



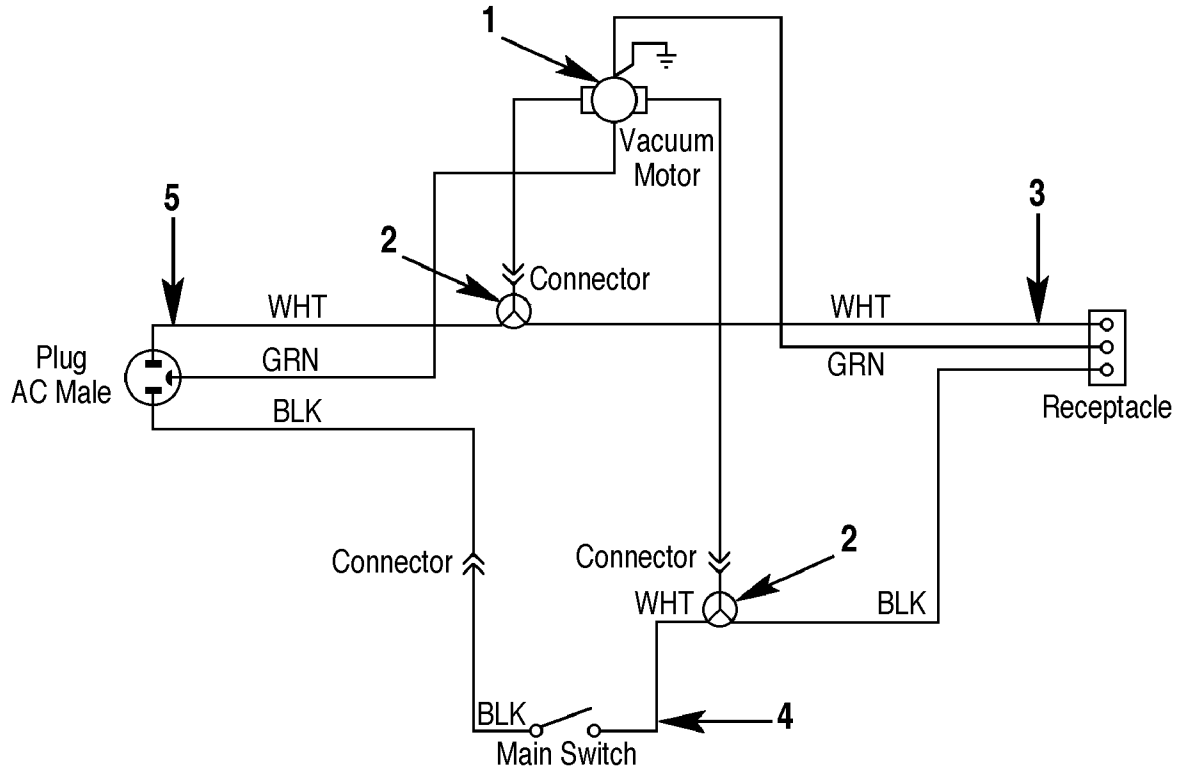
VACUUM MOTOR

Item	Part No.	Qty	Description
	56323172	1	Vacuum Motor Assembly (std)
	56100438	1	Vacuum Motor Assembly (400hz)
1	56323177	1	Vacuum Motor
*	56203518	1	Carbon Brush Set for 323177
2	56209325	1	Motor Gasket
3	56002518	4	#10-24 x 3/8 HP-5 Screw
4	56323173	1	Vacuum Motor Cup (std)
	56100435	1	Vacuum Motor Cup (400hz)
5	56323044	1	Inner Baffle
6	56323009	1	Outer Baffle NOTE
7	56002540	2	#10-24 x 3/4 HP-5 Screw
8	56323064	1	Cup Gasket
*	56250150	1	Ground Wire

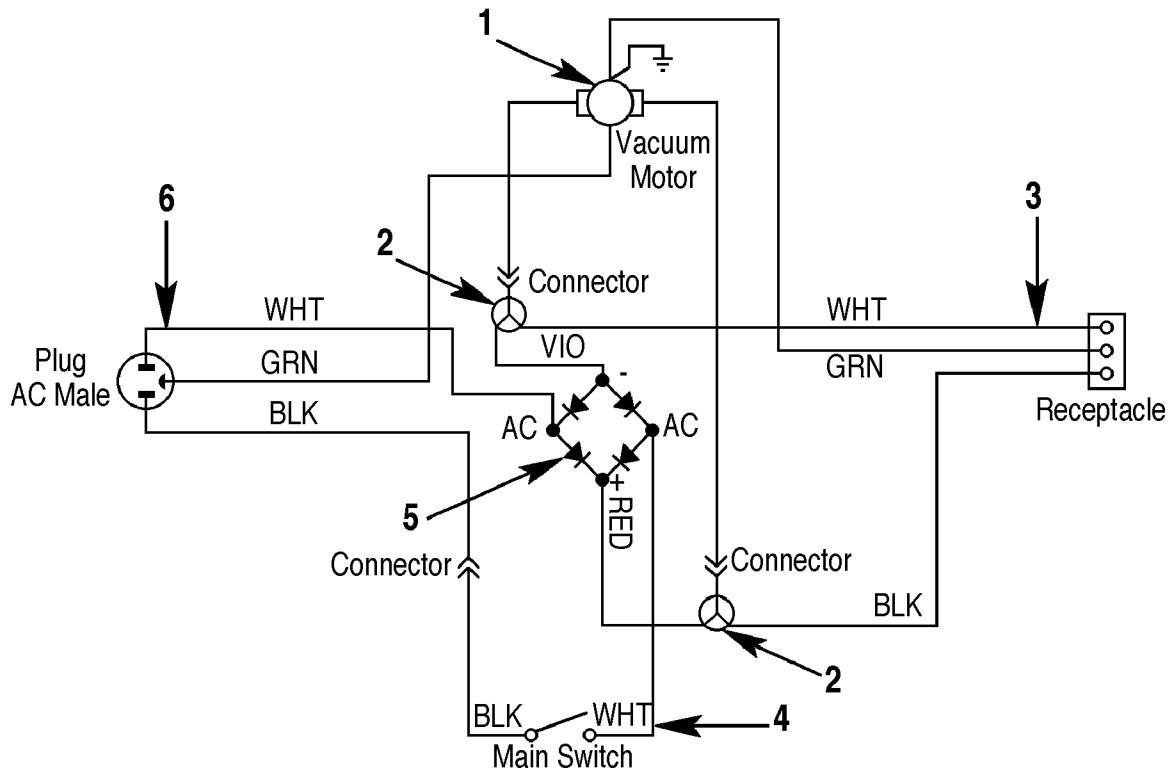
* = Not Shown

NOTE: Install the lip on outer baffle, item #6, turned in towards the motor.

120Vac (std)



120Vac (400hz)



120VAC (STD) WIRING DIAGRAM

Item	Part No.	Qty	Description
1	56323172	1	Vacuum Motor Assembly
	56323177	1	Vacuum Motor
*	56203518	1	Carbon Brush Set for 56323177
2	56472272	2	1/4 Receptacle Tab
3	56100354	1	Cord Set
4	56100356	1	Main Switch Assembly
	56323741	1	Main Switch
	56320307	1	Cord
5	56100352	1	Power Cord
*	56100355	1	Extension Cord

* = Not Shown

120VAC (400HZ) WIRING DIAGRAM

Item	Part No.	Qty	Description
1	56100438	1	Vacuum Motor Assembly
	56323177	1	Vacuum Motor
*	56203518	1	Carbon Brush Set for 56323177
2	56472272	2	1/4 Receptacle Tab
3	56100354	1	Cord Set
4	56100437	1	Main Switch Assembly
	56323741	1	Main Switch
	56320307	1	Cord
5	56180163	1	Rectifier, 35 Amp
6	56100352	1	Power Cord
*	56100355	1	Extension Cord

* = Not Shown



Nilfisk-Advance, Inc.
14600 21st Avenue North
Plymouth, MN, 55447-3408
www.nilfisk-advance.com
Phone: 800-989-2235
Fax: 800-989-6566
©2001 Nilfisk-Advance, Inc.,
Plymouth, MN 55447-3408
Printed in the U.S.A.