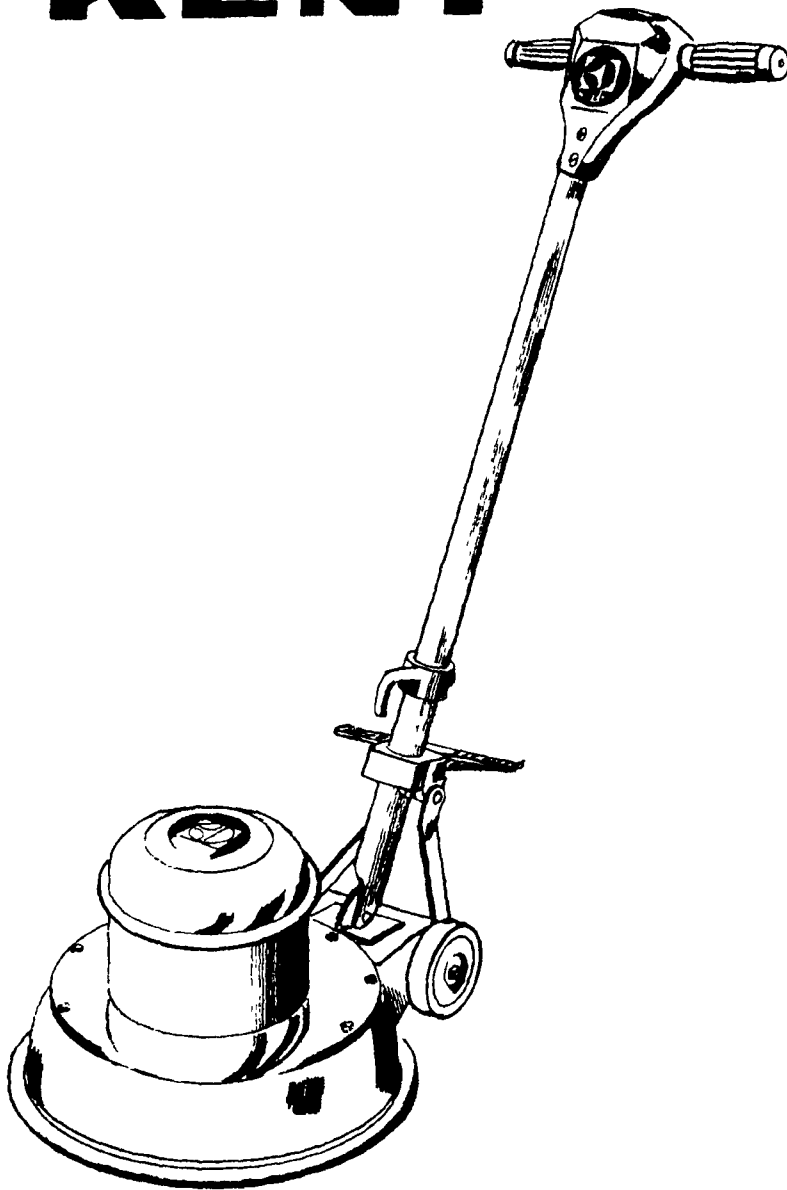


**KENT**

# THE K-LINE FLOOR MACHINE

MODELS  
K-17 K-19  
K-22



**OPERATING &  
MAINTENANCE  
INSTRUCTIONS**

**ILLUSTRATED  
PARTS LIST**

**KELTEC INC.**  
ELKHART, INDIANA 46514

IMPORTANT

Please read the following instructions carefully before operating the Kent "Balanced Power" Floor Machine.

UNPACKING

1. Carefully unpack all shipping cartons. After unpacking, inspect all components to insure that there is no concealed freight damage. If such damage is discovered, file a Concealed Damage Report immediately with the delivering carrier.

OPERATION

2. Be sure the electric current on which the machine is to be operated corresponds in all respects with that appearing on the data plate attached to the motor. DO NOT ATTEMPT to operate your floor machine on an overloaded current. Wherever possible, connect the machine directly to a wall outlet and avoid the use of extension cables. When an extension cable is necessary, use at least as heavy a gauge as recommended in the following table:

RECOMMENDED EXTENSION CABLE SIZE (Gauge)

<u>Motor Size</u>	<u>Extension Cable Lengths</u>			
	25'	50'	75'	100'
1/3 HP	14	14	12	12
1/2 HP	14	12	12	10
3/4 HP	12	12	10	10
1 HP	12	10	10	10

GUARANTEE IS VOID IF MACHINE IS OPERATED  
ON IMPROPER CURRENT OR VOLTAGE

3. KENT FLOOR MACHINES are controlled by a safety switch located in the handle. Switch is always in "OFF" position until actuated by the operator by "turning" the handle grips forward. DO NOT TURN THE SWITCH ON AND OFF WHILE BRUSH IS ROTATING. THIS CAUSES ARCING IN THE SWITCH AND WILL EVENTUALLY BURN THE SWITCH CONTACTS.

4. Attach the brush by turning the machine on its left side. Place yourself to the right of the machine and slip the brush over the clutch. Turn brush counter-clockwise to lock it in place.
5. Return the machine to the upright position. Turn on the safety switch. Do not hold the handle rigidly. Keep the brush bristle surface flat on the floor. After operating floor machine in one spot, slowly lift on the handle and the machine will move to the right. Straight downward pressure on the handle will cause the machine to move to the left. To move directly forward or back, hold the handle so that the brush is perfectly flat on the floor and push or pull the machine in the direction desired.
6. The proper care of the brushes will greatly prolong their life. It is especially important to REMOVE THE BRUSH FROM THE MACHINE WHEN NOT IN USE. Hang the brushes over hooks on the wall when not in use.
7. KENT FLOOR MACHINES are permanently lubricated for life and normally require further lubrication only when disassembled for repairs. If it is necessary to replace the lubricant in the gear chamber, use only TENAFILMA grease, available from your authorized KENT distributor.

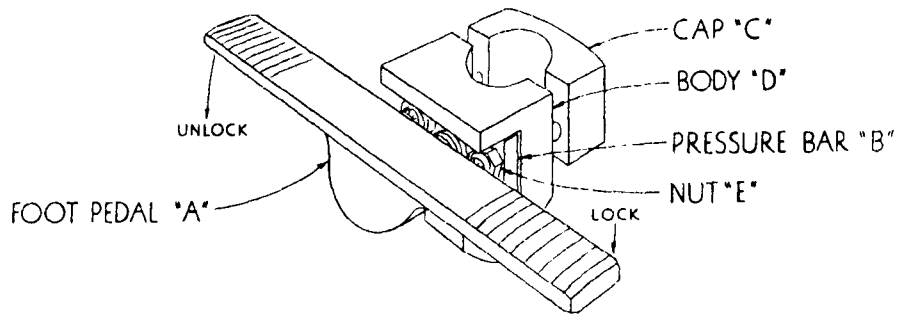
THE GUARANTEE CARD ATTACHED TO YOUR KENT FLOOR MACHINE  
MUST BE FILLED IN AND RETURNED TO:

Keltec Inc.  
500 East Street  
Elkhart, Indiana 46514

Your KENT machine can be used for many different jobs. Following is a list of some of the more commonly used brushes and attachments that are available. They can be obtained from your authorized KENT distributor.

Polish Brush  
Fibre Scrub Brush  
Steel Wire Brush  
Stiff Polish Brush - 100% Palmetto  
Lamb's Wool Pad Holder  
Steel Wool Pad Holder  
3M Drive Pad Assembly  
Handle Type Solution Tank  
Shower Feed Shampoo Brush -  
(13" and 17" Models only)

## HANDLE LOCK ASSEMBLY



### ADJUSTMENT INSTRUCTIONS:

IF HANDLE DOES NOT LOCK SECURELY WHEN FOOT PRESSURE IS APPLIED DOWNWARD ON RIGHT SIDE OF PEDAL, MOVE TO UNLOCK POSITION & TIGHTEN (2) NUTS "E" SLIGHTLY. IF HANDLE IS TOO TIGHT, LOOSEN NUTS "E" SLIGHTLY. SEE DIAGRAM "2"

### ASSEMBLY INSTRUCTIONS:

STEP NO. 1--- SCREW STUD OF FOOT PEDAL "A" INTO PRESSURE BAR "B" UNTIL  $\frac{1}{16}$  OF STUD EXTENDS BEYOND PRESSURE BAR. SEE DIAGRAM "1".

STEP NO. 2--- ASSEMBLE CAP "C" TO BODY "D" ENCIRCLING HANDLE TUBING, WITH STUDS OF CAP EXTENDING THROUGH PRESSURE BAR, AS SHOWN IN DIAGRAM "1".

STEP NO. 3--- TIGHTEN (2) NUTS "E" EVENLY UNTIL THERE IS A SLIGHT DRAG IN UNLOCK POSITION WHEN HANDLE IS RAISED & LOWERED. THEN LOOSEN NUTS "E" SLIGHTLY ( $\frac{1}{8}$  TURN) UNTIL HANDLE MOVES FREELY IN UNLOCK POSITION. SEE DIAGRAM "2".

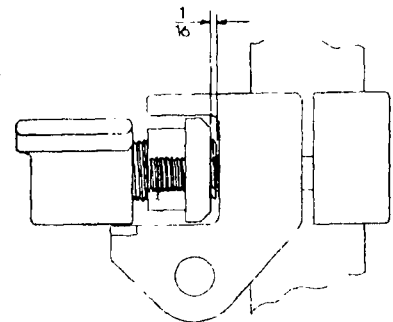


DIAGRAM "1"

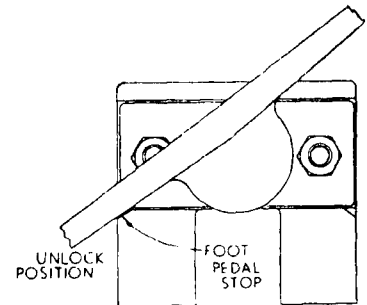
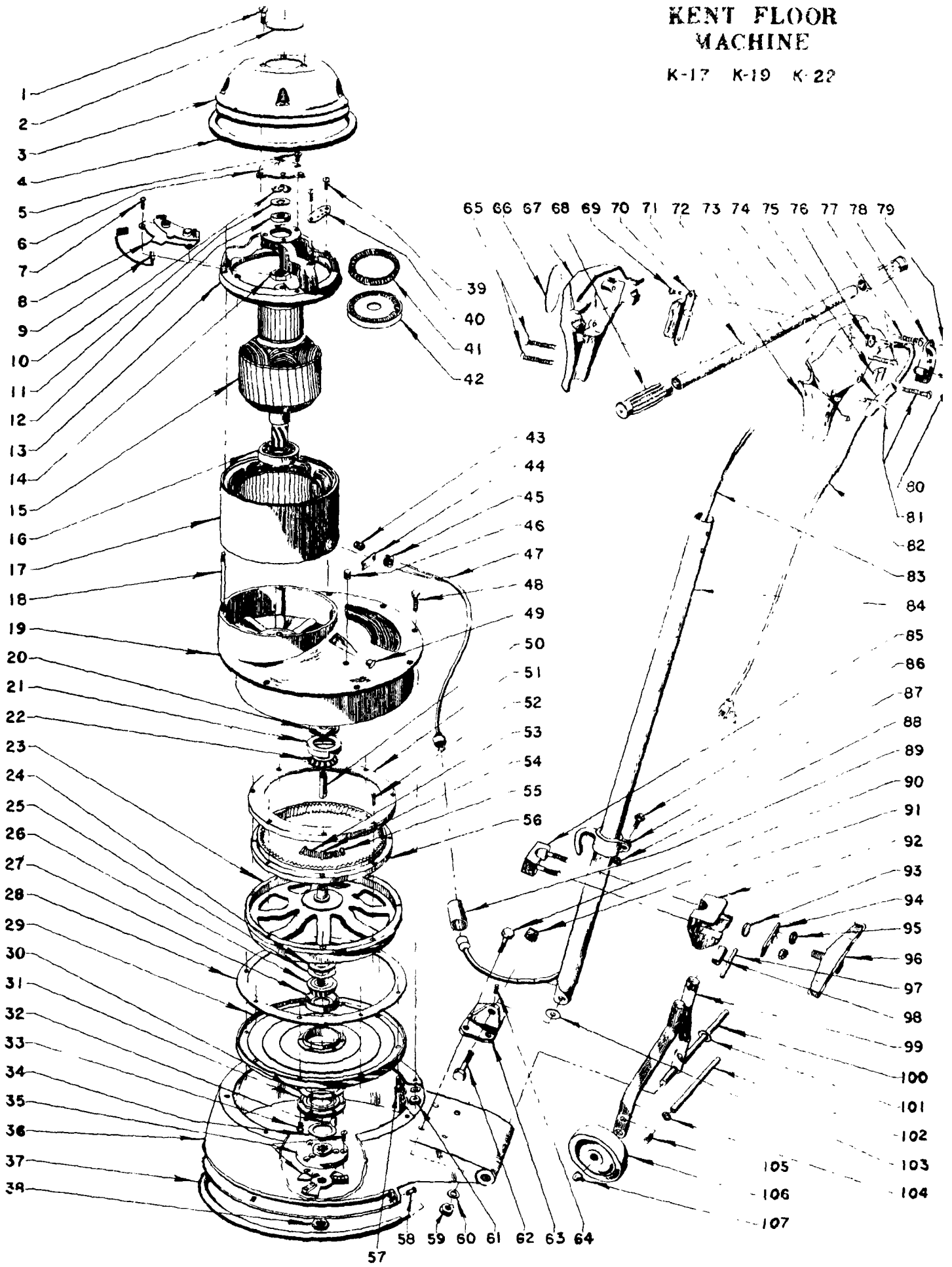


DIAGRAM "2"

# KENT FLOOR MACHINE

K-17 K-19 K-22



KENT FLOOR MACHINE

K-Line Parts List

Ref. No.	Part Number	Description	Quantity			
			3/4 HP	1 HP	1 HP	1 HP
		K-17 - 3/4 H.P. - QDH				
		K-19 - 1 H.P. - QDH				
		K-22 - 1 H.P. - QDH				
		K-22 - 1 H.P. Dry Scrub				
1	22-3048	Screw - 10-32 x 5/8 Round Head	3	3	3	3
2	48804	Kent Logo	1	1	1	1
3	11-1139	Motor Cover	1	1	1	1
4	11-1140	Motor Bumper	1	1	1	1
5	22-3079	Screw - 10-32 x 1/2" Flat Head	3	3	3	3
6	11-1109	Bearing Cap	1	1	1	1
7	22-3047	Screw - 10-32 x 1/2 Round Head	4	4	4	4
8	33-1602	Brush Holder	2	2	2	2
9	33-1601	Carbon Brushes (Pair)	2	2	2	2
10	22-4059	Bearing Spring	2	2	2	2
11	22-4021	Washer - Steel	2-4	2-4	2-4	2-4
12	22-1020	Ball Bearing 202 KDD	1	1	1	1
13	11-1142	Commutator Bearing Housing	1	1	1	1
14	22-2221	Nut - 3/4-20 x 1/2 Hex	1	1	1	1
15A	66-1019	Arm.Assy.Comp. (No's. 12,14,15C & 16) 60 Cyc.	1			
15A	66-1020	Arm.Assy.Comp. (No's. 12,14,15C & 16) 50 Cyc.	1			
15B	66-1022	Arm.Assy.Comp. (No's. 12,14,15D & 16) 60 Cyc.		1	1	1
15B	66-1023	Arm.Assy.Comp. (No's. 12,14,15D & 16) 50 Cyc.		1	1	1
15C	33-1647	Rotor and Shaft - 115/230V - 60 Cyc.	1			
15C	33-1648	Rotor and Shaft - 115/230V - 50 Cyc.	1			
15D	33-1659	Rotor and Shaft - 115/230V - 60 Cyc.		1	1	1
15D	33-1660	Rotor and Shaft - 115/230V - 50 Cyc.		1	1	1
16	22-1017	Ball Bearing 205 KDD	1	1	1	1
17A	33-1630	Field Assembly - 115/230V - 60 Cyc.	1			
17A	33-1641	Field Assembly - 115/230V - 50 Cyc.	1			
17B	33-1629	Field Assembly - 115/230V - 60 Cyc.		1	1	1
17B	33-1632	Field Assembly - 115/230V - 50 Cyc.		1	1	1
18	11-1150	Stud - Motor	4	4	4	4
19	11-1141	Geared Head	1	1	1	1
20	22-4002	Felt Washer - 1-1/2 OD x 1/2 ID x 1/8	1	1	1	1
21	22-1054	Bearing Cup	1	1	1	1
22	22-1053	Bearing Cone	1	1	1	1
23A	25-0600	Spider and Shaft Assembly	1	1	1	1

WHEN ORDERING PARTS - Please furnish Part Number, Model & Serial Number

KENT FLOOR MACHINE

K-Line Parts List

Ref. No.	Part Number	Description	Quantity			
			3/4 HP	1HP	1HP	1HP
23B	11-1152	Slider and Shaft Assembly		1	1	1
24	22-4009	Flat Washer 2-3/4 OD x 1-3/4 ID x 1/4	1	1	1	1
25	22-4030	Washer - Steel 2-1/2 x 1-3/16 x 1/32	1	1	1	1
26	22-1053	Bearing Cone	1	1	1	1
27	22-1054	Bearing Cup	1	1	1	1
28	11-1138	Gasket - Enclosure	1	1	1	1
29	11-1211	Enclosure	1			
29	11-1151	Enclosure		1	1	1
30	11-1110	Gasket - Enclosure Cap	1	1	1	1
31	11-1123	Enclosure Cap and Felt Assy. (Incl. 31A & 31B)	1	1	1	1
31A	22-4006	Felt	1	1	1	1
31B	11-1124	Enclosure Cap	1	1	1	1
33	22-3079	Screw - 10-32 x 1/2 Flat Head	6	6	6	6
34	22-4023	Washer - Steel Shim	0-1	0-1	0-1	0-1
35A	11-1125	Brush Clutch Complete	1	1	1	
35B	11-1233	Brush Clutch - Dry Scrub				1
36	25-0201	Body Frame		1		
36	30-0202	Body Frame				
36	35-0201	Body Frame			1	1
37	25-0300	Base Bumper Assembly	1			
37	30-0300	Base Bumper Assembly		1		
37	35-0300	Base Bumper Assembly			1	1
38	22-2230	Nut - Brush Clutch	1	1	1	1
39	22-3047	Screw - 10-32 x 1/2 Round Head	6	6	6	6
40	11-1143	Terminal Block	1	1	1	1
41	33-1639	Short Circuiter Spring - 60 Cyc.	1	1	1	1
41	33-1640	Short Circuiter Spring - 50 Cyc.	1	1	1	1
42	33-1620	Short Cir. Assy. 60 Cyc. (Incl. Ref. No. 41)	1	1	1	1
42	33-1621	Short Cir. Assy. 50 Cyc. (Incl. Ref. No. 41)	1	1	1	1
43	22-2245	Wire Nut	2	2	2	2
44	11-1061	Anchor Block	1	1	1	1
45	11-1059	Grommet	1	1	1	1
46	22-2066	Grease Plug	1	1	1	1
47	11-1144	Motor Cable	1	1	1	1
48	22-3131	Screw - 5/16-24 x 1-1/4 Hex Head	7	7	7	7
49	11-1065	Solution Supply Cap	1	1	1	1

WHEN ORDERING PARTS - Please furnish Part Number, Model & Serial Number

KENT FLOOR MACHINE

K-Line Parts List

Ref. No.	Part Number	Description	Quantity			
			3/4HP	1HP	1HP	1HP
50	11-1112	Solution Supply Tube	1	1	1	1
51	11-1145	Gear Cover	1	1	1	1
52	22-3075	Screw - 8-32 x 1/2 Flat Head	8	8	8	8
53	11-1120	Gear Spring	12			
53	11-1120	Gear Spring		16	16	16
54	25-0503	Gear Pin - 3/16 x 1-15/64	6			
54	11-1520	Gear Pin - 3/16 x 1-39/64		8	8	8
55	11-1519	Pin - 3/16 x 11/16	6			
55	11-1519	Pin - 3/16 x 11/16		8	8	8
56A	66-1055	Gear and Grease - Fibre	1			
56B	66-1056	Gear and Grease - Fibre		1	1	
56C	66-1691	Gear and Grease - Bronze				1
57	22-3120	Screw - 1/4-20 x 1 Hex	10			
57	22-3121	Screw - 1/4-20 x 1-1/2 Hex		10	10	10
58	22-2255	Nipple - (Included with Ref. No. 37)	2	2	2	2
59	22-2219	Nut - 5/16-24 Hex	4	4	4	4
60	22-4037	Lockwasher - 5/16	4	4	4	4
61	22-2219	Nut - 5/16-24 Hex	7	7	7	7
61	22-4037	Lockwasher - 5/16	7	7	7	7
62	22-1131	Screw - Hd. Pivot 1/2-20 x 2 Hex Hd.	1	1	1	1
63	11-1624	Handle Pivot - Base	1	1	1	1
64	22-3227	Set Screw - 1/4-20 x 3/8 Cup Point	1	1	1	1
65	22-3169	Screw - 1/4-20 x 2 Oval Head	2	2	2	2
66	48804	Kent Label	1	1	1	1
67	11-1338	Switch Box Front	1	1	1	1
68	11-1345	Handle Grip	2	2	2	2
69	22-3034	Screw - 8-32 x 1/4 Round Head	2	2	2	2
70	11-1560	Switch	1	1	1	1
71	11-1352	Tube Assembly - Handle Grip	1	1	1	1
72	11-1339	Switch Box Back	1	1	1	1
73	22-3173	Set Screw - 3/8-16 x 5/16 Cup Point	1	1	1	1
74	11-1132	Cable Protector	1			
74	11-1788	Cable Protector		1	1	1
75	11-1073	Cable Clamp	1	1	1	1
76	11-1058	Grommet	1	1	1	1
77	22-3169	Screw - 1/4-20 x 2 Oval Head	2	2	2	2

WHEN ORDERING PARTS - Please furnish Part Number, Model & Serial Number



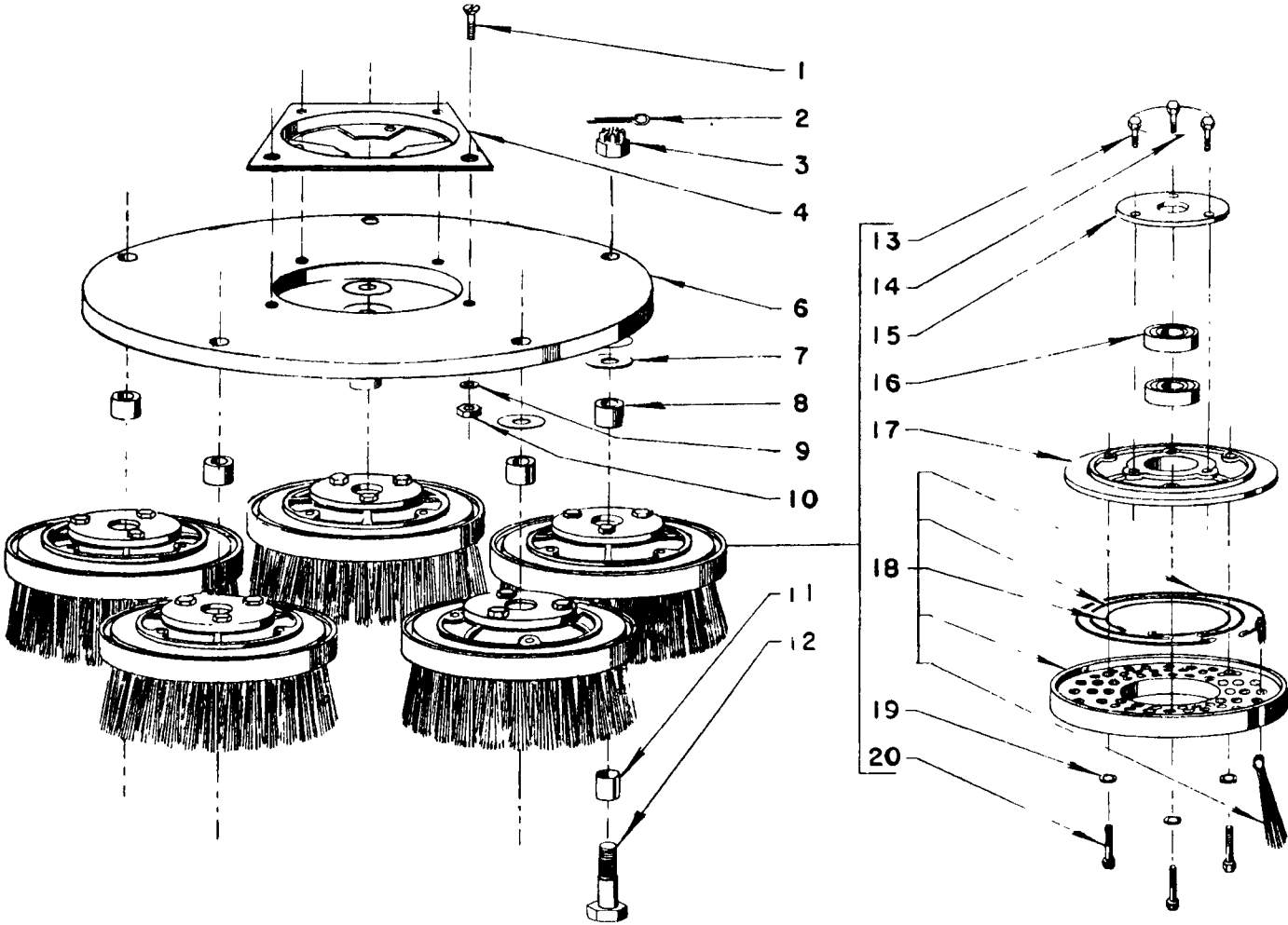
KENT FLOOR MACHINE

K-Line Parts List

Ref. No.	Part Number	Description	Quantity			
			3/4HP	1HP	1HP	1HP
78	11-1134	Cover - Cable Clamp	1	1	1	1
79	22-3039	Screw - 8-32 x 5/8 Round Head	1	1	1	1
80	22-3175	Screw - 10-32 x 1-1/2 Round Head	2	2	2	2
81	22-3170	Screw - 1/4-20 x 2-1/4 Oval Head	2	2	2	2
82	11-1096	Power Cord - 14-3 x 50'	1			
82	11-1267	Power Cord - 12-3 x 50'		1	1	1
83	11-1146	Cord - In Handle	1	1	1	1
84	11-1662	Handle Assy. Comp. - 3/4 HP Includes Ref. No. 65 thru 84,86,87 & 88	1			
84	11-1663	Handle Assy. Comp. - 1 HP Includes Ref. No. 65 thru 84,86,87 & 88		1	1	1
84	11-1636	Handle Tube Assembly	1	1	1	1
85	11-1631	Cap - Handle Lock	1	1	1	1
86	22-3156	Screw - 5/16-24 x 3/4 Hex	1	1	1	1
87	11-1554	Cord Hook	1	1	1	1
88	22-2219	Nut - 5/16-24 Hex	1	1	1	1
89	46680	Connection Guard	1	1	1	1
90	22-3131	Screw - 5/16-24 x 1-1/4 Hex Head	4	4	4	4
91	03377	Nut - 1/2-20 Flex Lock	1	1	1	1
92	11-1630	Body - Handle Lock	1	1	1	1
93	11-1632	Insert	1	1	1	1
94	11-1633	Pressure Bar	1	1	1	1
95	22-2265	Nut - 3/8-24 Hex Locking	2	2	2	2
96	11-1634	Foot Pedal	1	1	1	1
97	22-2619	Roll Pin - 1/2 x 2-3/4	1	1	1	1
98	11-1629	Spacer - Connecting Legs	1	1	1	1
99	11-1628	Connecting Legs	2	2	2	2
100	11-1627	Axle	1	1	1	1
101	04321	Washer - 33/64 I.D. x 1-1/4 O.D.	4	4	4	4
102	11-1763	Strut - Axle	1	1	1	1
103	11-1625	Washer - Nylon (Handle Pivot)	1	1	1	1
104	22-4057	Spring Washer	2	2	2	2
105	22-3119	Screw - 1/4-20 x 3/4 Hex	2	2	2	2
106	11-1639	Wheel - 4" - Gray	2	2	2	
106	11-1734	Wheel - 5" - Gray				2
107	22-2202	Nut - 1/2-13 Acorn	2	2	2	2

WHEN ORDERING PARTS - Please furnish Part Number, Model & Serial Number

**MULTIPLE DRY  
SCRUB BRUSH**  
PARTS LIST



MULTIPLE DRY SCRUB BRUSH

PARTS LIST

Ref. No.	Part Number	Description	No. Req'd.
	35-3900	22" Multiple Dry Scrub Brush	
1	22-3095	Screw - 5/16-18 x 7/8 Flat Head	4
2	22-2608	Cotter Pin - 1/8 x 1-1/4	5
3	22-2206	Nut - 5/16-18 Hex Head - Castellated	5
4	35-3902	Brush Back	1
6	35-3901	Disc - 16" O.D. x 4-15/16 I.D. x 5/16	1
7	22-4022	Washer - 1-1/2 O.D. x 11/16 I.D. x 1/32	AR
8	11-1232	Collar - 1" O.D. x 5/8 I.D. x 11/16	5
9	04212	Lockwasher - 5/16	4
10	03286	Nut - 5/16-18 Hex	4
11	11-1229	Bushing - 7/8 x 2 x .020 Rolled Steel	5
12	11-1778	Screw - 5/16-18 x 2-3/4 Hex Head	5
13	11-1779	Screw - 5/16-24 x 3/4 Hex Head	15
14	11-1236	Wire - 18 Gauge x 10' Long	5
15	11-1230	Bearing Cap	5
16	22-1018	Bearing - 230 KDD Ball	10
17	11-1228	Brush Block Bearing Housing	5
18	11-1222	Dry Scrub Brush Complete	5
19	02278	Lockwasher - 1/4	15
20	22-3124	Screw - 1/4-28 x 1-1/4 Hex Head	15
	11-1776	Screw - Clutch Cap (Not Shown)	3
	11-1236	Lacing Wire 10" (Not Shown)	1
		<i>17) 10' lacing wire - put out there</i>	

WHEN ORDERING PARTS - Please furnish Part Number, Model & Serial Number