

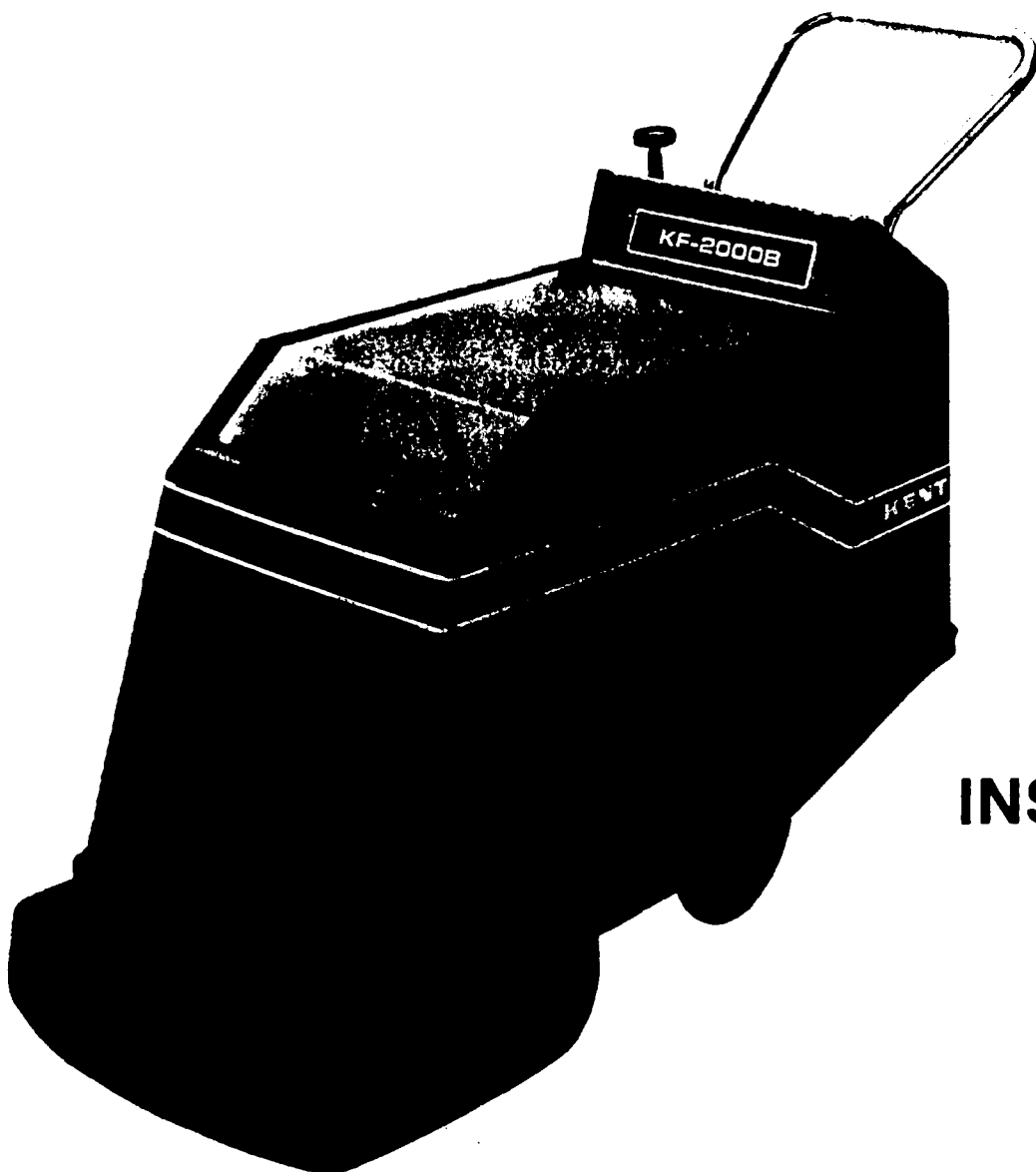


KENT

MODEL

KF-2000B

BATTERY BURNISHER



OPERATING, MAINTENANCE INSTRUCTIONS & ILLUSTRATED PARTS LIST

APRIL 1985

Write the model and serial number of your unit in the space provided. Refer to the rating plate on unit.

Model #

Serial #

Retain this owner's guide for future reference.

THE KENT COMPANY

P.O. Box 1665
2310 Industrial Parkway
Elkhart, IN 46515 (219)293-8661

Western Branch: 9865 South Pioneer Blvd.
Santa Fe Springs, CA 90670 (213)949-8351

INTRODUCTION

Your High Speed Burnisher has been especially engineered and manufactured to give the maximum in performance in a total polishing of small and large floor areas.

With careful maintenance, according to the instructions outlined in the following pages, a high standard of operation throughout its use will be insured.

CAREFULLY INSPECT ALL COMPONENTS TO INSURE THAT THERE IS NO CONCEALED FREIGHT DAMAGE. IF SUCH DAMAGE IS DISCOVERED, FILE A "CONCEALED DAMAGE REPORT" IMMEDIATELY WITH THE DELIVERING CARRIER.

The contents of this manual are based on the latest product information available at the time of publication. The right is reserved to make changes at any time without notice in price, color, materials, equipment, specifications and models.

IMPORTANT SAFEGUARDS

ACCIDENTS DUE TO MISUSE CAN ONLY BE PREVENTED BY THOSE USING THE MACHINE. TO GUARD AGAINST INJURY, BASIC SAFETY PRECAUTIONS AS SHOWN IN THIS MANUAL SHOULD BE OBSERVED.

READ AND FOLLOW ALL SAFETY INSTRUCTIONS.

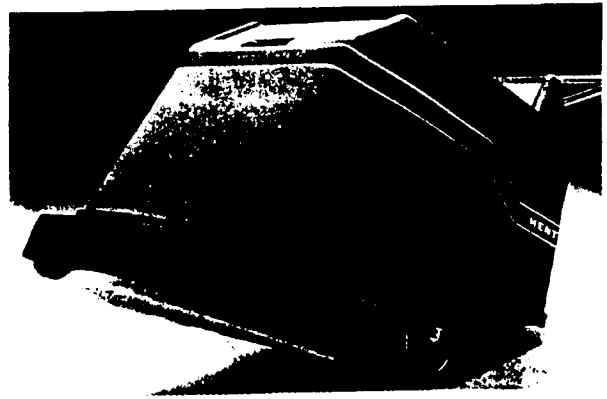
GENERAL INFORMATION

Unpack your floor machine carefully. This machine is designed to easily tilt rearward, so caution is advised when removing from box, and in moving machine over inclines and steps. Avoid bodily injury by handling carefully.

Install batteries by first placing a support at the rear of the machine to prevent tilting of it during this installation. Install batteries as illustrated in diagram bonded to machine lid, be sure to have two people do the installation of each battery because of weight and danger.

BE SAFE-AVOID HAZARDS

Your floor machine is equipped with a lighted master power switch. When the switch is "ON", no motion or sound will be present until the wheels of the machine are forced to roll forward or rearward. The high speed 20" burnish wheel will run at full power when the operator pushes forward or pulls rearward on the machine. A mercury tilt interlock switch is built into the controls so that the operator, when changing pads, is safeguarded when the machine is tilted. Even though this safeguard is provided.



CAUTION

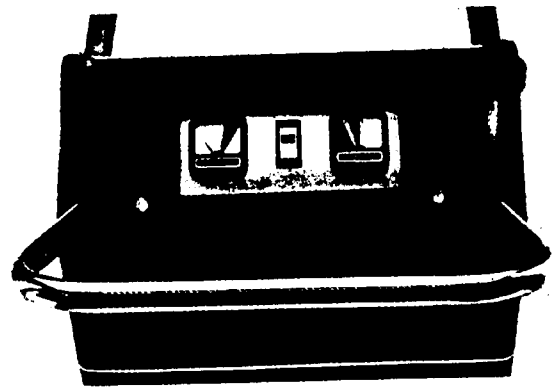
CAUTION: Be sure to turn the Master Switch "OFF" before changing pads.

Do not bypass or defeat this safety interlock.

Avoid hazardous conditions, do not use your machine in areas where flammable and/or explosive vapors or dust are present.

Your floor machine must not be used as a toy. Do not allow children or unauthorized personnel to play with unit. Do not leave floor machine "ON" and unattended.

WARNING-This machine is designed for high speed burnishing only. It cannot be used for scrubbing or shampooing.



HEIGHT CONTROL

A means of controlling pad pressure is located conveniently near the operator's position. The machine must be moving before motor will come on. Turn the height control knob clockwise to decrease pad pressure or counterclockwise to increase pad pressure. A meter is provided on the instrument panel so that pad pressure is constantly monitored. The meter is identified as "LOAD INDICATOR". The colored GREEN zone on the meter face is where the needle should point when the

operator has set the height control properly for average conditions while pushing the burnishing machine forward. A lower reading in the **YELLOW** meter zone indicates light or no burnishing pressure. A higher reading in the meter **RED** zone indicates excessive burnishing pressure or loading up of pad. **LOW TO HIGH** fluctuations of pressure are normal. Averaging the observed fluctuations should place them in the green zone. If this is not the case, an adjustment of the height control knob is required.

GUIDELINES FOR OPERATION

Adjust the push handle to a height that is comfortable for your operation, then tighten the two handle clamping knobs in the rear of the machine securely.

The machine is designed to be adjustable for all types of pad thicknesses. Pad selection is important. Be sure the pad is intended for 2,000 rpm high-speed use. A pad that is not intended for 2,000 rpm high-speed use can disintegrate very quickly and lodge inside the covered housing. Be sure the main switch is turned off before tilting machine.

The pad holder is exposed by pushing the machine's rear end to the floor. Notice the abrupt shift of weight will hold the machine in a stabilized position on heavy-duty rubber shock absorbers against the floor. A T-handle with a pointed screw through a molded cup provides an easy means of centering and securing the pad under the holder.

Raise the rear of the machine to normal position. To proceed, push the switch "ON" that is located between the meters on the instrument panel. Grip the chrome handle firmly and push the machine forward. The burnishing motor will start to rotate. If the machine pulls to the side and the "LOAD INDICATOR" meter points to full-scale (**RED** zone), push the main switch OFF immediately. Turn the height control knob on the right side of the instrument panel clockwise and notice that the front of the machine raises very slowly. Satisfactory height adjustment is easily attained by again pushing the machine. When the burnishing motor starts, turn the knob in the direction that places the meter's needle in the **GREEN** zone. Notice that guiding and pushing the machine becomes easier and floor finish brighter when the "LOAD" is adjusted properly.

MOTION SENSING SYSTEM

This Battery Burnisher is equipped with a motion sensing system for ultimate floor protection. The motor will automatically shut off if burnisher is not moving, moving very slowly or tilted backwards. The motion sensing system is triggered by magnets bonded on hub of left main wheel triggering a Reed switch secured to frame of machine. Triggering speed is factory set for approximately 6 seconds, adjusting the white plastic wheel with screw driver slot on the sensor board will

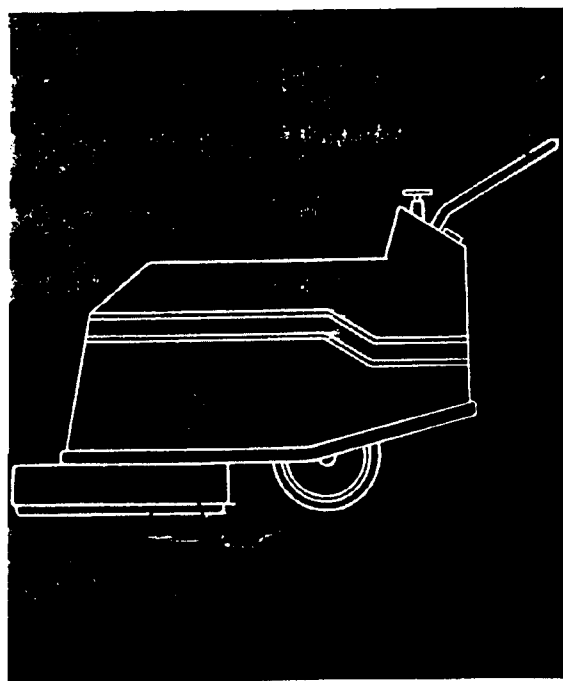
increase or decrease trip time. The bullet-shaped item on the sensing board is a mercury tilt switch to shut system off when changing pad even if main switch is inadvertently left on.

CIRCUIT BREAKER

If the motor in the machine becomes overloaded, it will turn off automatically. Overloading may occur if the burnishing pad pressure is too great and the height control knob is adjusted too low. When the "LOAD INDICATOR" meter is allowed to operate continuously at full scale (in the **RED** zone), the circuit breaker will open. The circuit breaker is located underneath the machine cover at the left side of the frame next to the motor. After a one minute wait, the circuit breaker reset button can be depressed to restore operation. The breaker may reset but the motor may not come on unless machine is moved forward or backwards. Readjust machine height to function within the **GREEN** scale of the meter.

MOTION SENSING SYSTEM

This Battery Burnisher is equipped with a motion sensing system for ultimate floor protection. The motor will automatically shut off if burnisher is not moving, moving very slowly or tilted backwards. The motion sensing system is triggered by magnets bonded on hub of left main wheel triggering a Reed switch secured to frame of machine. Triggering speed is factory set for approximately 6 seconds, adjusting the white plastic wheel with screw driver slot on the sensor board will increase or decrease trip time. The bullet-shaped item on the sensing board is a mercury tilt switch to shut system off when changing pad even if main switch is inadvertently left on.



CARE, STORAGE, AND BATTERY CHARGING

At the end of a burnishing operation period, the machine should be cleaned up and prepared for the next operational period. The batteries require constant current charging at 36 volts through a charging connector located on the front of the frame. The machine's battery cover should be left open while charging takes place.

TO OPERATE THE KENT BATTERY CHARGER:

1. Connect the charger plug to the machine plug firmly.
2. Plug battery charger into a normal electrical outlet and set the timer as desired. NOTE: Set the Kent Battery Charger on a flat, firm surface to insure that cooling air can circulate through the bottom louvers.

The Kent Battery Charger is guaranteed against defective parts and workmanship. Any parts proving defective within six months will be repaired free of charge when the charger is returned prepaid to the manufacturer.

WARNING:



Hydrogen gas is formed when the batteries approach the full charge state. This gas is explosive; therefore when charging batteries with lid open, avoid any open flame or electric spark near batteries. This includes connecting or disconnecting charger with timer "ON". To avoid accumulation of gas, be sure batteries receive good air circulation while being charged.

BATTERY CARE

Battery care determines the life span and efficiency of the units; therefore, for the longest possible useful life from these batteries, the following procedure should be followed:

1. Keep battery solution (electrolyte) level up in cells. Check daily. If cells need water, use only distilled or approved water. **DO NOT OVERFILL!**
2. Keep batteries fully charged.
3. Keep batteries and connection clean. When necessary, clean with baking soda solution and coat terminals with grease after wires have been attached to retard corrosion.

Your floor machine should be stored in a clean dry place. Do not allow the machine to rest on its pad for an extended period of time. The pad could take a set and cause the machine to vibrate excessively. This will not occur if the height control is left at the proper operating setting.

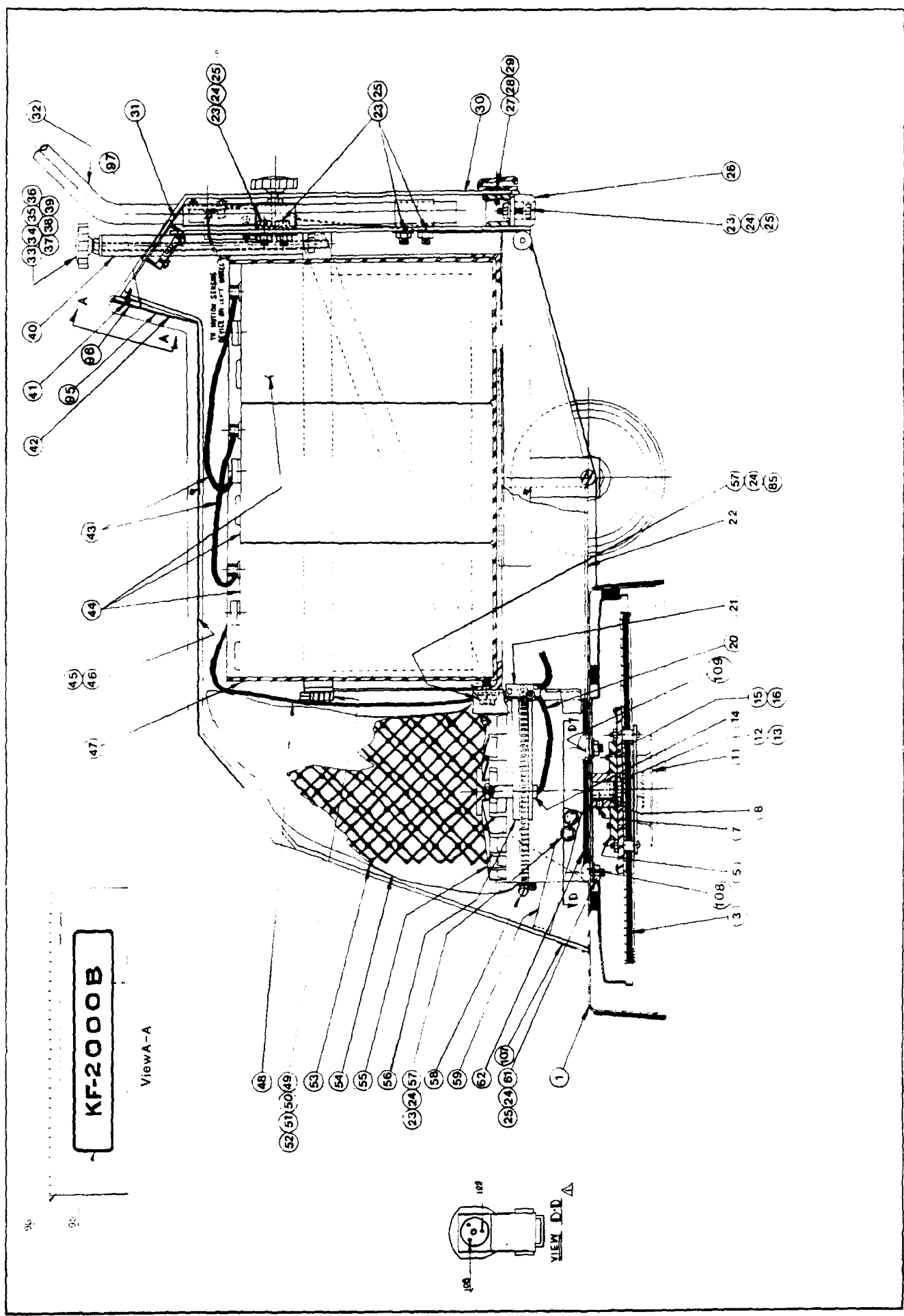
WEEKLY

Check battery electrolyte level and add distilled water if low. Wipe off tops of batteries to prevent accumulation of water, acid and dirt. Clean the dust bag clamped over the motor by vacuuming it thoroughly. If it becomes loose from its mounting or is torn, it must immediately be repaired or replaced. Service life of the motor will be greatly reduced if the filter is not inspected and cleaned at least every week. More frequent cleaning may be necessary under severe conditions. To inspect the filter for efficiency, remove the molded polyethylene machine cover by releasing the four (4) cover retaining screws and removing three (3) black knobs and handle. Lift the cover straight up and off the machine.

Release the long steel clamp encircling the bottom of the dust bag and remove clamp, bag, and bag support mesh. There should be no collection of dust, sand, or dirt on or in the motor. If there is, the bag has been leaking. Inspect parts and take corrective action. Be careful that a tool or piece of hardware does not fall into the motor housing. It contains permanent magnets, and retrieval of foreign objects could be difficult. Brush and commutator life is severely shortened if dirt passes around the filter.

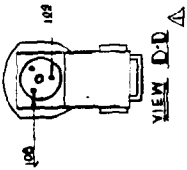
After checking and reclamping filter bag, reinstall the machine cover, handle knobs and retainer screws.

The wheels are provided with a single zerk on each. One pump from the grease gun once a week is plenty of lubrication for the wheels. No other lubrication is required.



KF-2000B

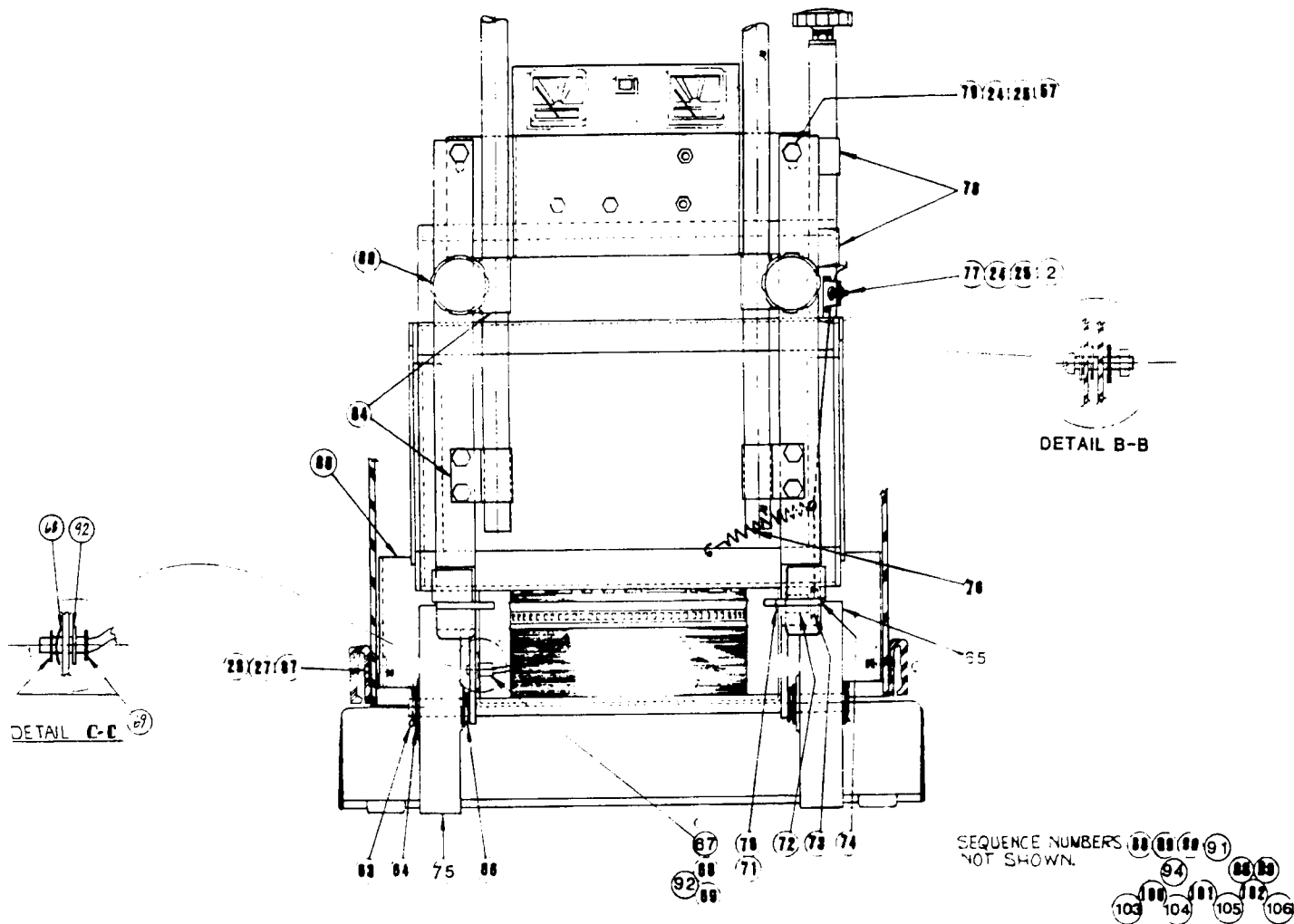
View A-A



VIEW D-D

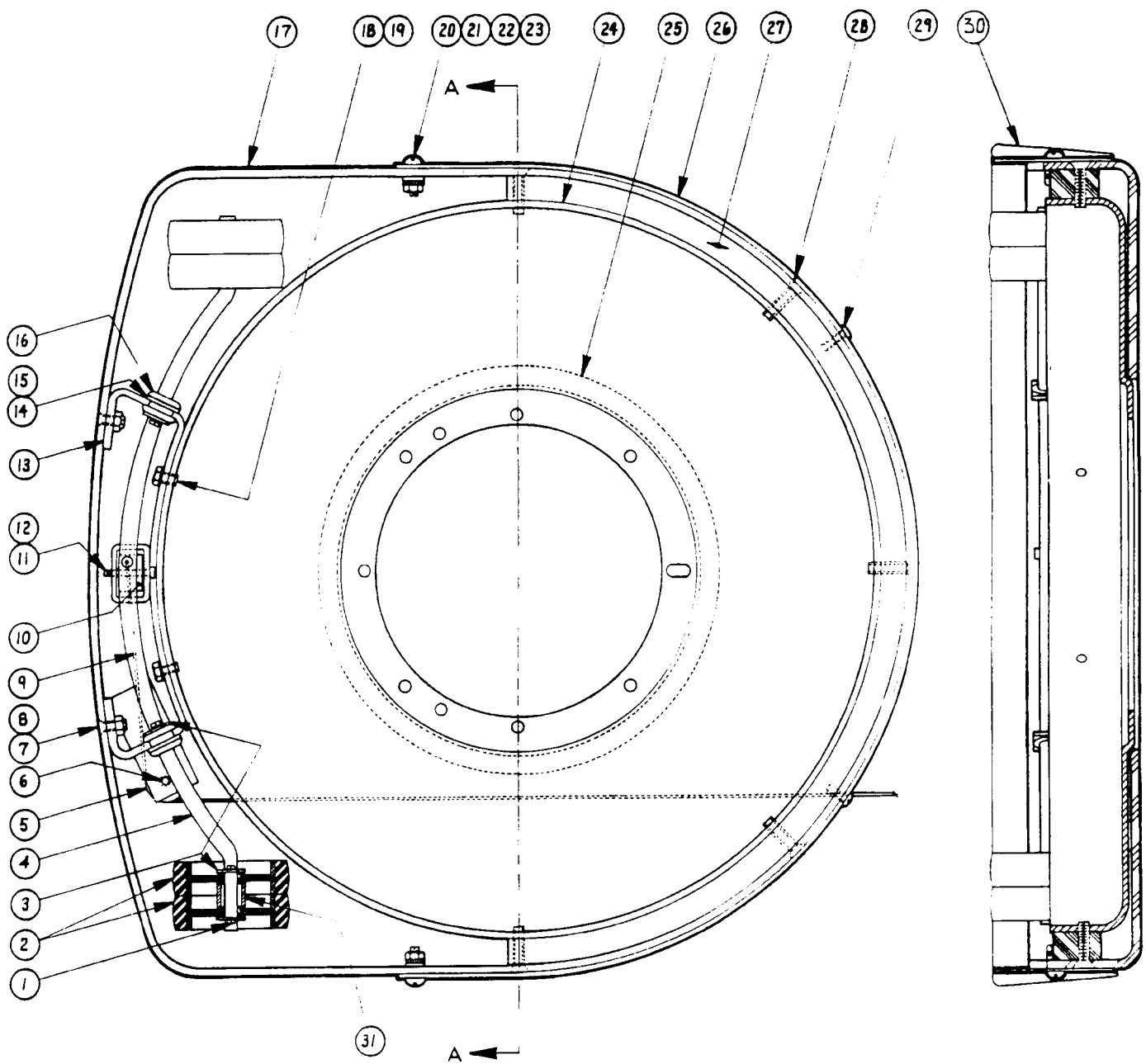
BATTERY BURNISHER BODY ASSEMBLY

SEQ NO.	COMPONENT ITEM NO.	DESCRIPTION	QUANTITY
01	33831	ASM,BRUSH COVER & WHEELS	1
02	04207	WSHR FLT .281ID.56200.063T BRS	1
03	20339	ASM,PAD HOLDER--COMPL FOR BB	1
04	47085	STRAP,TIE,ELEC-- 5.50L,NYLON	1
05	33833	WDMT,BRUSH DRIVE HUB--KF2000B	1
07	05387	SCR SET CUP PT .312-18X.500L	2
08	40407	KEY,SQUARE--.187 SQ,1.125 LONG	1
11	33864	ASM,CLAMPING PLATE--KF-2000B	1
12	23156	SCR CAP HEX HD .312-24X.750L	1
13	52765	SPACER,STL--.341DX1.120DX.25T	1
14	52804	TUBING,INSL.SHRINK--.5DIA X2.0L	2
15	03224	SCR CAP HEX HD .375-16X.750L	3
16	04214	WSHR LK .390ID.68300.094TSPLT	3
20	25669	ASM,WIRE--6 GA,BLK,10.0 L,INS.	1
21	26874	CIRCUIT BREAKER--70 AMP	1
22	33813	WDMT,FRAME--KF-2000B	1
23	02256	SCR CAP HEX HD .250-20X1.00L	14
24	02278	WSHR LK .262ID.48900.062TSPLT	14
25	03283	NUT,HEX--.250-20,ZN PLT	15
26	52787	BUMPER,RUBBER--1.5 ODX.75 THK	2
27	05373	WSHR FLT .281ID.62500.062T STL	4
28	02263	SCR MACH RD HD .250-20X1.25L	4
29	03364	NUT,SPEED,U--.250-20,.63X1.23	2
30	33860	ASM,SHROUD,COMPLETE--KF-2000B	1
31	33829	ASM,INSTRUMENT--PANEL,KF-2000B	1
32	52752	TUBE,STL--HANDLE,KF-2000B	1
33	47484	KNOB	1
34	04215	WSHR LK .398ID.69400.040T EXT	1
35	03293	NUT,HEX--.375-16,ZN PLT	1
36	05320	WSHR FLT .406ID.75000.060T STL	1
37	52741	ROD,STL--.375 X 12.0L,.375-16	1
38	33814	WDMT,TRAVERSE NUT--KF-2000B	1
39	05279	NUT,HEX LOCK--.375-16,NYLOC	1
40	33820	ASM,CONTROL COLUMN--KB-2000B	1
41	02382	SCR TPG F PAN HD 10-B X.500L	4
42	33834	WDMT,LID&HINGE--KF-2000B	1
43	25252	ASM,WIRE-- 6GA,RED,18.0L,RINGS	2
44	26876	BATTERY--12V,195AH,WET,KF2000B	3
45	52797	TAPE--FOAM,DOUBLESIDE,18.0LONG	3
46	52801	COVER,BATTERIES--KF-2000B	1
47	52793	BUX,BATT--KF2000B,MACH'D,3BATT	1
48	33859	ASM,CABLE--6GA,BLACK,24.0 LONG	1
49	33053	ASM,SUB--CHARGER,PLUG	1
50	01248	SCR MACH RD HD 6-32X1.00L	2
51	04249	WSHR LK .150ID.32000.022T EXT	2
52	03274	NUT,HEX-- 6-32,ZN PLT	2
53	33844	ASM,SUPPORT--FILTER BAG	1
54	52798	BAG,FILTER--MOTOR1	1



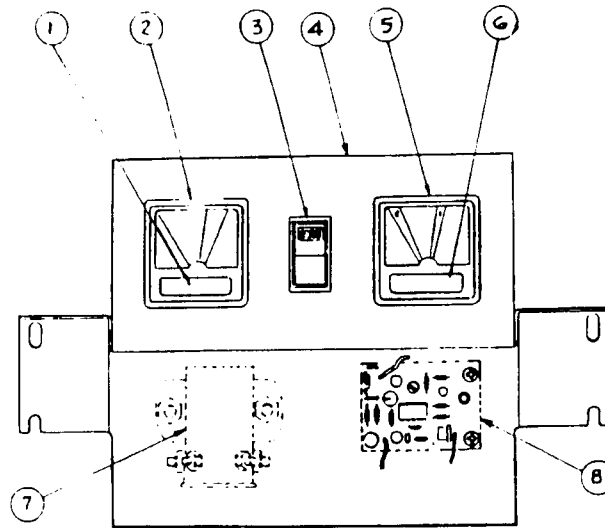
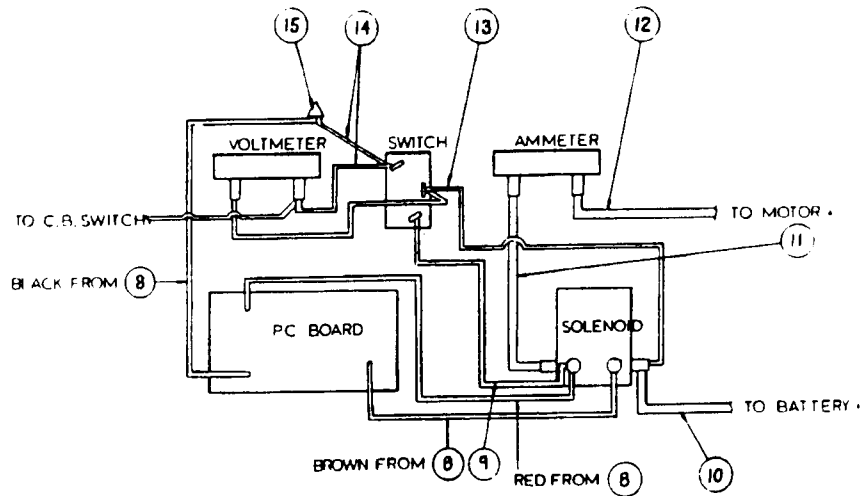
BATTERY BURNISHER BODY ASSEMBLY

SEQ NO.	COMPONENT ITEM NO.	DESCRIPTION	QUANTITY	SEQ NO.	COMPONENT ITEM NO.	DESCRIPTION	QUANTITY
55	24297	MTR,DC--36V,2.50HP,1800RPM	1	84	52738	CLAMP,LOOP--HANDLE,.900 DIA.	4
56	52800	GASKET--FILTER BAG	1	85	02232	SCR CAP HEX HD .250-20X.375L	2
57	04206	WSHR FLT .281ID.5620D.063T STL	6	86	52788	ANGLE,STL--1.12X3.12X5.50L	2
58	52799	CLAMP,ADJUSTABLE--34 INCH	1	87	03360	NUT,SPEED,U--.250-20,.50X.97	2
59	52782	BAR,STL--.125X1.00X22.00 LONG	1	88	32461	CHARGER,BAT--35 VOC,100V 60 CY	1
60	52150	GASKET,FOAM--.375X.875X21.37L	1	89	47085	STRAP,TIE,ELEC-- 5.50L,NYLON	10
61	05213	WSHR FLT .281ID.5620D.063T STL	1	90	49465	BAR--HOLD DOWN	2
62	52770	GASKET FOAM--.25X.50X29.50LONG	1	91	52908	LABEL,INSTR--WIRING DIAGRAM	1
63	05200	PIN,COTTER--.125X1.000 LONG	2	92	04384	WSHR FLT .406ID.9750D.064T STL	1
64	04507	WSHR FLT .812D1.500D.125 STL	4	93	50759	STRAP,TIE,ELEC--12.00L,NYLON	10
65	33832	ASM,WHEEL&MAGNET--8.0 KF2000B	1	94	49026	LABEL,INSTR--MAINT,AUTO BAT	1
66	04508	WSHR,SPRING STEEL--TNSN,.75 OD	4	95	52794	LABEL,IDENT--FRONT LID,KF2000B	1
67	25651	ASM,CABLE--MOTION SENSING	1	96	52795	TAPE,VINYL--BLACK,15.3CUTLNTH	1
68	04320	WSHR SPR TNSN .375ID.7500D.014	1	97	52796	DATA PLATE--KF-2000B	1
69	04382	RING,RTNG--EXT,.375 SHAFT,"E"	2	98	80197	SKID	1
70	01343	SCR CAP SOC HD 10-24X.500L	1	99	80420	SKID,BATTERY & PACK	1
71	04253	WSHR LK .204ID.4100D.025T EXT	1	100	80470	CTN--56.75X24.75X34.5 KF-2000B	1
72	52789	BAR,STL,HEX--.625X.75L,10-24TP	1	101	80477	CTN--21.12LX15.12WX15.00H3BATT	1
73	52742	PULLEY,CABLE--1.000D,.252 BORE	1	102	83154	MANUAL,TECH--KF-2000B,KENT	1
74	02429	SCR SHLDR SOC HD 10-24X.375 S	1	103	02326	SCR CAP HEX HD .500-13X2.50L	2
75	52751	WHEEL,RUBBER--8.00 DIA,1.62W	1	104	03296	NUT,HEX--.500-13,ZN PLT	2
76	52647	SPRING,EXT--.531D 3.89L .054WD	1	105	04228	WSHR LK .516ID.8730D.125T SPLT	2
77	52713	SCR MACH RD HD .250-20RS2247	1	106	04491	WSHR FLT .500ID1.370D.109T	2
78	52739	CLAMP,LOOP--COLUMN,.900 DIA.	2	107	52826	LABEL,INSTR--CAUTION,KF2000B	1
79	02253	SCR CAP HEX HD .250-20X.750L	2	108	04336	WSHR FLT .281ID.8750D.125T STL	1
80	33846	ASM,KNOB--375-16UNC,BLACK	2	109	04206	WSHR FLT .281ID.5620D.063T STL	1



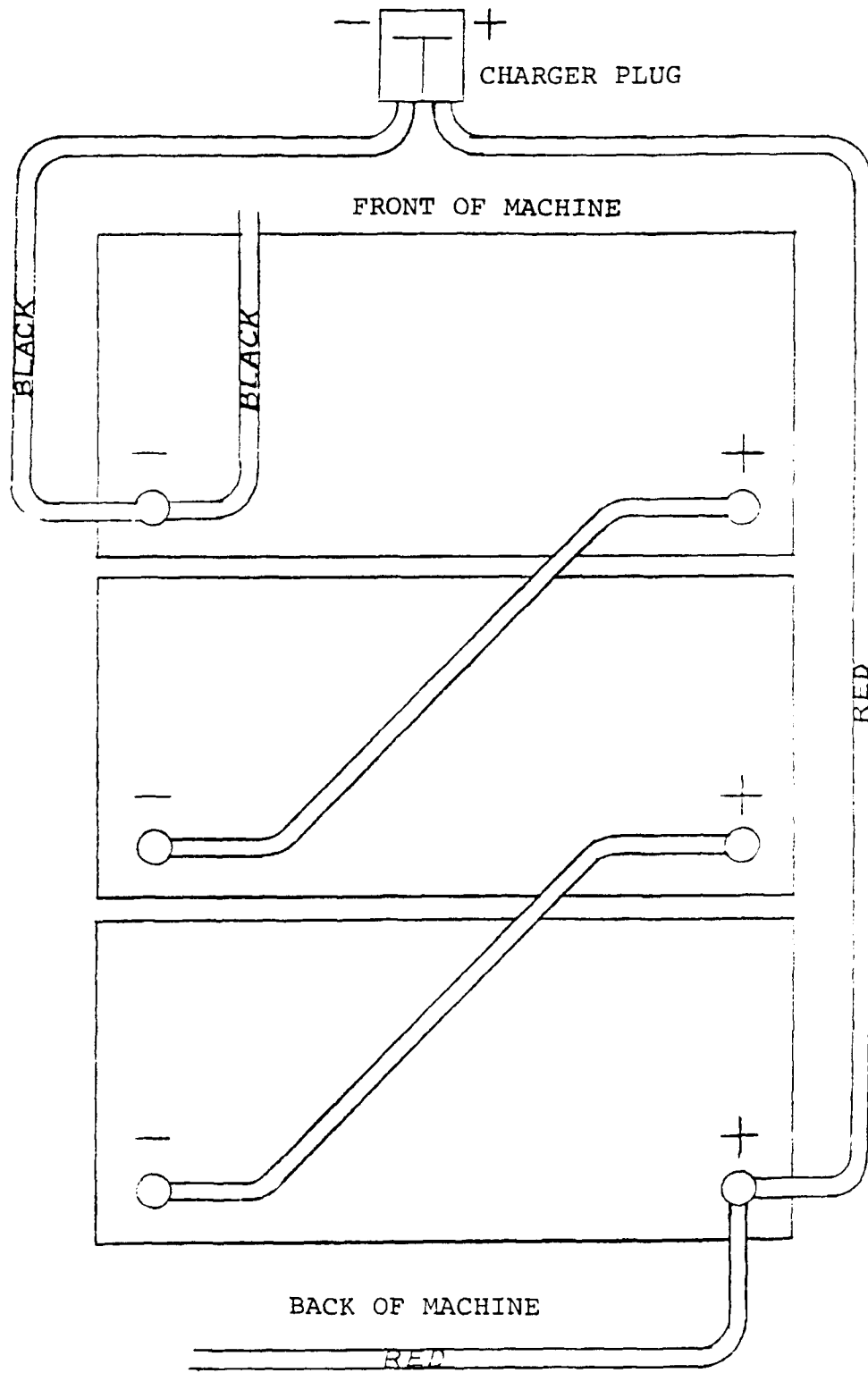
BATTERY BURNISHER COVER AND WHEEL ASSEMBLY, 33831

SEQ NO.	COMPONENT ITEM NO.	DESCRIPTION	QUANTITY	SEQ NO.	COMPONENT ITEM NO.	DESCRIPTION	QUANTITY
01	04297	PIN,COTTER--.094X .750 LONG	6	17	52783	SHROUD,BRUSH--MACH'D,KF-2000B	1
02	33868	ASM,WHEEL--3.0DIA,.512BORE.88W	4	18	02243	SCR CAP HEX HD .250-20X.625L	2
03	04238	WSHR FLT .531ID1.000D.071T STL	6	19	04254	WSHR LK .267ID.5100D.028T EXT	2
04	52424	AXLE,STL--FORMED,.437 DIA	1	20	01259	SCR MACH RD HD 8-32X.500L	2
05	52742	PULLEY,CABLE--1.000D,.252 BORE	1	21	05323	WSHR FLT .203ID.5000D.036T STL	2
06	02429	SCR SHLDR SOC HD 10-24X.375 S	1	22	04252	WSHR LK .176ID.3810D.023T EXT	2
07	02252	SCR MACH FLAT HD .250-20X.750L	2	23	03276	NUT,HEX-- 8-32,ZN PLT	2
08	03363	NUT,HEX LOCK--.250-20,ZN PLT	2	24	52372	COVER,BRUSH--19.25",KF2000E	1
09	52753	WIRE,ROPE-- .062 X65.0 S.S.	1	25	52769	GASKET,FOAM--.375X.87X37.00L	1
10	52743	PULLEY,CABLE--1.000D,.188 BORE	1	26	52781	GUARD,STRIP--20 GA SS (FORMED)	1
11	04426	PIN,CLEVIS--.187X1.500 LONG	1	27	52377	SPACER,EXTRUSION--VINYL,BLACK	1
12	04293	PIN,COTTER--.062X .375 LONG	1	28	05266	SCR MACH FLAT HD .250-20X1.37L	5
13	33830	WDMT,AXLE BRKT--KF-2000B	1	29	02416	SCR TPG F PAN HD 10-8 X.375L	2
14	52764	PLATE,STL--1.00X1.50X16GA BRNS	2	30	52383	EXTRUSION,VINYL--70"L,BLACK	1
15	05487	SCR TPG F PAN HD 10-24X.500L	2	31	52914	SPACER--.750 ODX.500 IDX.590 L	2
16	50955	GROM--.437 ID,.687 WMD,.250 PA	2				



DET. NO.	PART NO.	DESCRIPTION	QTY.
1	52767	Label, Instruction - Ammeter	1
2	26877	Ammeter, D.C. - 0-90 Amperes	1
3	26875	Switch, Rocker - SPST W/Lite	1
4	52762	Panel, Stl - Instrument, KF-2000B	1
5	26503	Voltmeter, D.C.	1
6	52768	Label, Instruction - Voltmeter, Battery	1
7	26504	Solenoid - Single Throw, Switch	1
8	26878	Asm., P.C. Board - Motion Sensing	1
9	25648	Asm., Wire - 16 Gauge, Red, 9.0L, Comb.	1
10	25252	Asm., Lead Wire - Pos., Red	1
11	25275	Asm., Wire - 16 Gauge, Red, 8.0L, Rings	1
12	25461	Asm., Wire - Brush Motor, Red	1
13	25649	Asm., Wire - 16 Gauge, Red, 9.0L, Comb.	1
14	25650	Asm., Wire - 16 Gauge, Black, 9146, Comb.	1
15	26464	Nut, Wire	1

KF-2000B BURNISHER



BATTERY AND WIRING INSTALLATION