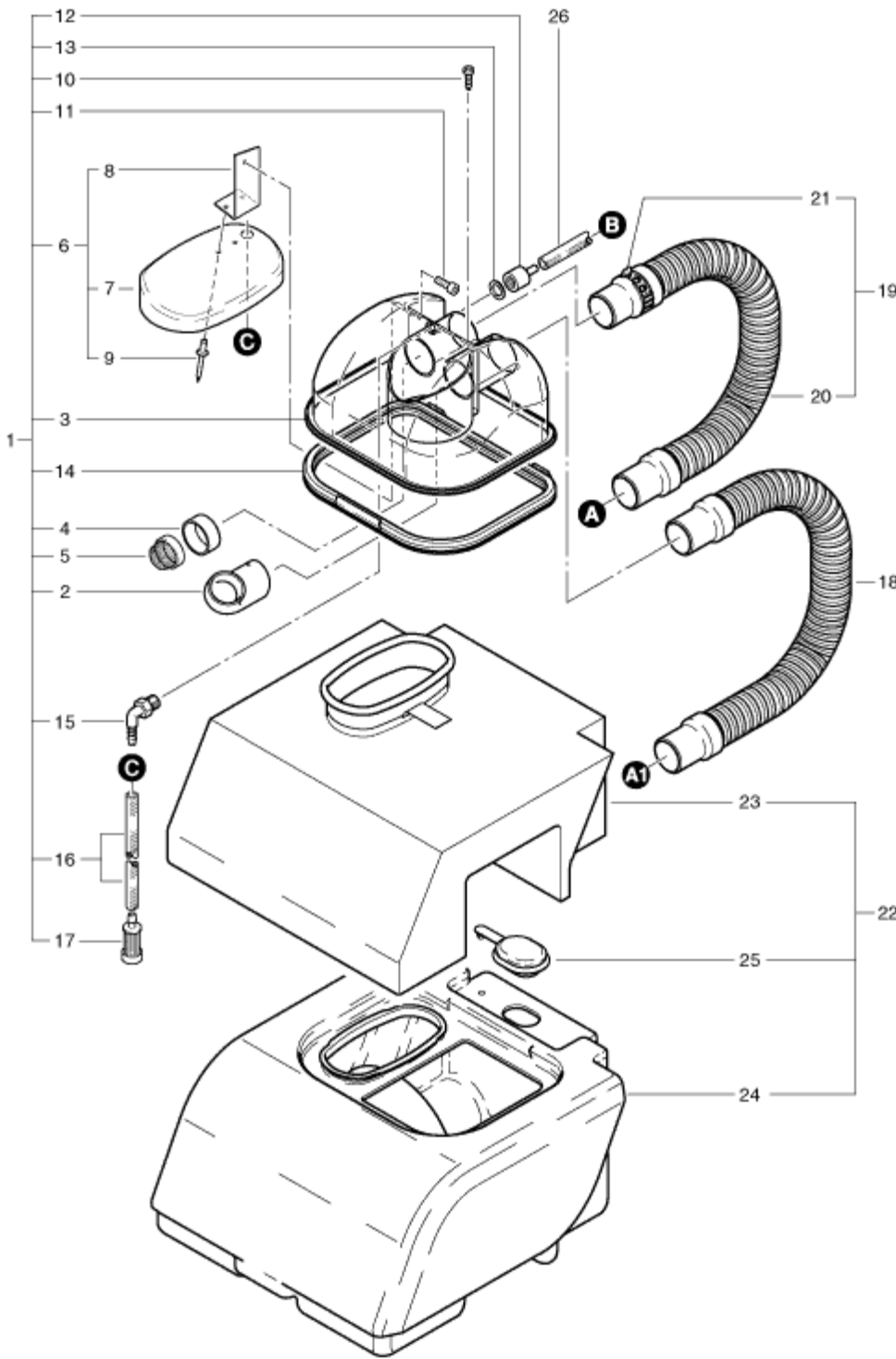
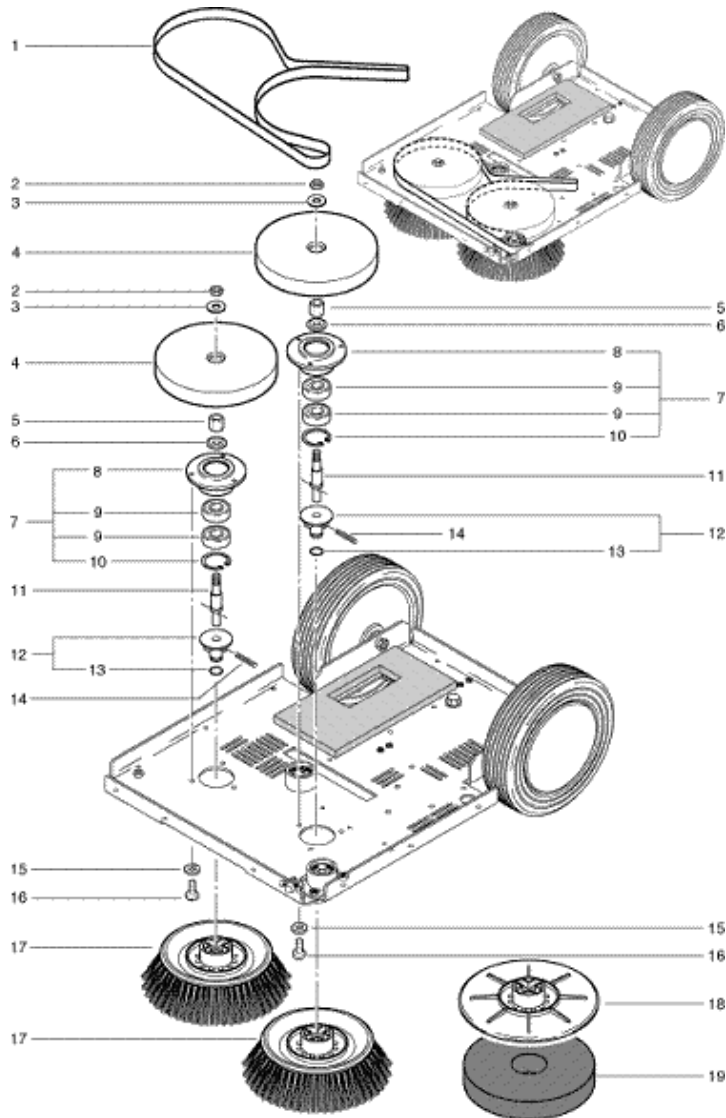


# MS-12 COVER



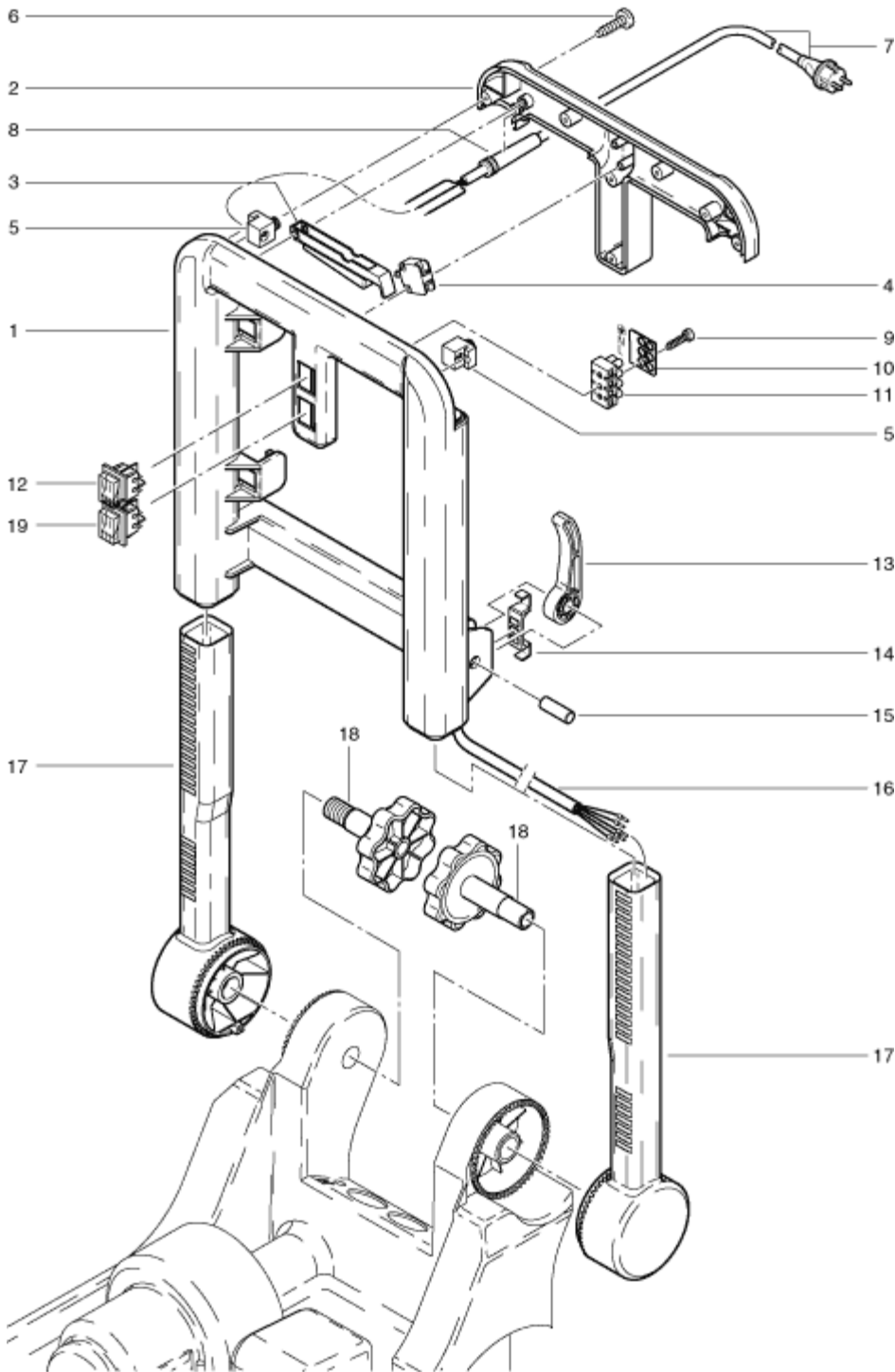
| Pos. | Description  | Reference |
|------|--|-----------|
| 01   | Tank cover complete - including: items 2-17        | 300.700   |
| 02   | Bent tube  | 380.552   |
| 03   | Tank cover   | 380.510   |
| 04   | Ring for filter                                    | 380.556   |
| 05   | Filter   | 400.766   |
| 06   | Partition complete - including: items 7-9          | 300.580   |
| 07   | Clean water tank cover                             | 300.584   |
| 08   | Angle  | 300.585   |
| 09   | Blind rivet dm 4x8 mm                              | P...485 C |
| 10   | PT screw KA 30x6                                   | P...515 Y |
| 11   | Hexagon socket screw M 3x10                        | P...487 Y |
| 12   | Fitting SW22 G3/8''                                | 380.555   |
| 13   | Gasket   | 030.015   |
| 14   | Seal for cover                                     | 380.554   |
| 15   | Angled fitting G1/4''                              | P...541 I |
| 16   | Hose 6/12 x 250 mm                                 | 300.703   |
| 17   | Fresh water filter                                 | P...528   |
| 18   | Complete hose compl.                               | 300.743   |
| 19   | Suction motor hose compl. - including: items 20+21 | 380.740   |
| 20   | Hose   | 380.743   |
| 21   | Air control slide                                  | 380.745   |
| 22   | Tank complete - including: items 23-25             | 300.550   |
| 23   | Fresh water tank                                   | 300.722   |
| 24   | Tank   | 300.560   |
| 25   | Cover  | 300.731   |
| 26   | Suction hose 12/x530                               | 300.072   |

## MS-12 BRUSHES



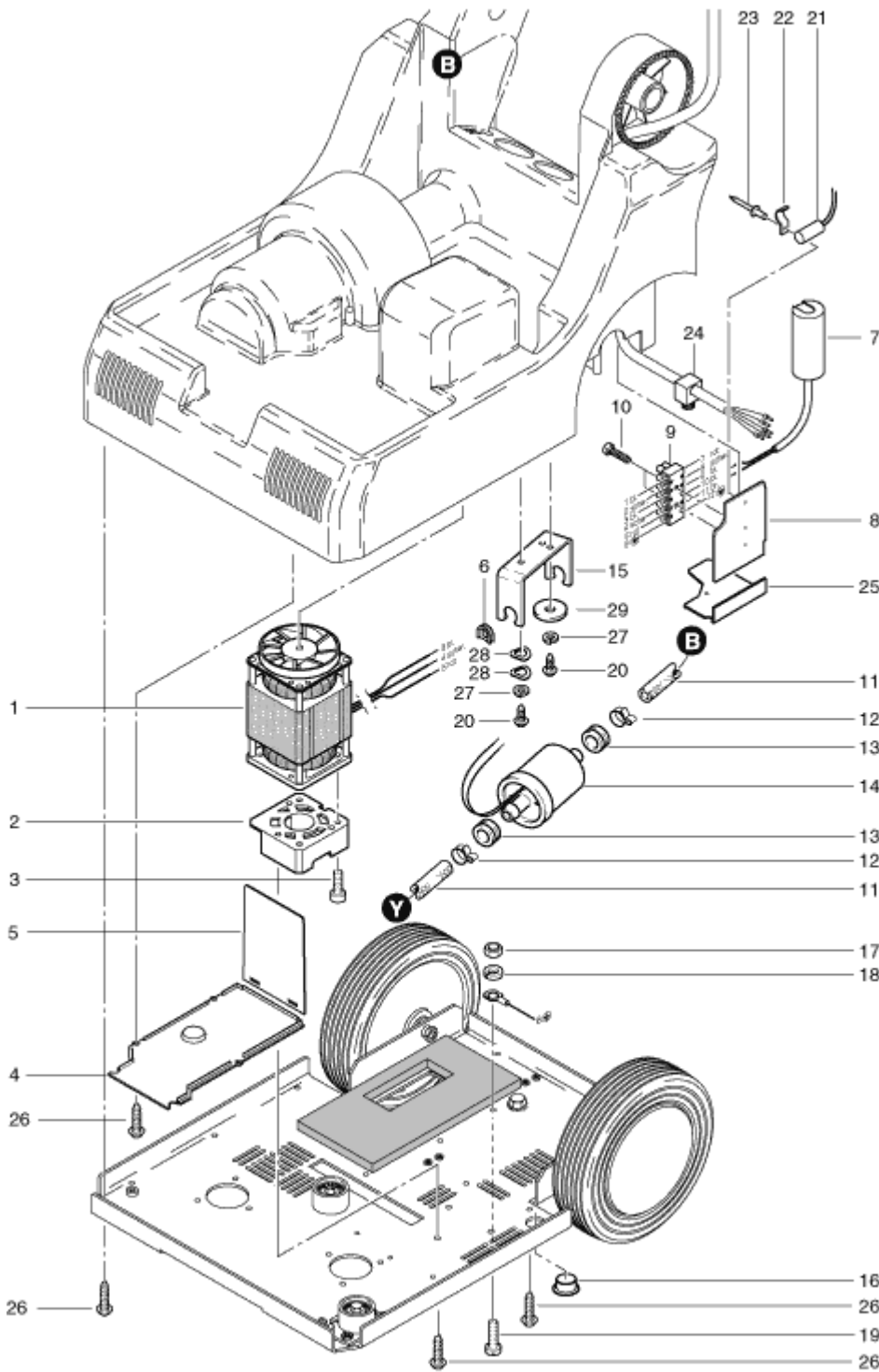
| Pos. | Description                                      | Reference |
|------|--|-----------|
| 01   | Belt   | 300.121   |
| 02   | Hexagon nut M8                                   | P...490E  |
| 03   | Washer M8  | P...497T  |
| 04   | Wheel  | 300.362   |
| 05   | Hub S 24x12.8 mm                                 | 300.369   |
| 06   | Washer dm 22 mm                                  | 300.352   |
| 07   | Bearing housing complete - including: items 8-10 | 300.365   |
| 08   | Bearing housing complete                         | 300.366   |
| 09   | Ball bearing                                     | P...316D  |
| 10   | Retaining ring dm 32 mm                          | P...514K  |
| 11   | Axle   | 300.116   |
| 12   | Centering pin with o-ring                        | 300.368   |
| 13   | O-ring 9.19x2.62 mm                              | P...960U  |
| 14   | Pin d 4x30 mm                                    | P...512F  |
| 15   | Washer M4  | P...496D  |
| 16   | Screw M 4x8 mm                                   | P...481P  |
| 17   | Brush dm 170 mm                                  | 300.059   |
| 18   | Driving disc - dm 16.5 cm (Optional accessories) | 300.070   |
| 19   | Pad red - dm 16.5 cm (Optional accessories)      | 300.010   |
| 19   | Pad brown - dm 16.5 cm (Optional accessories)    | 300.020   |

## MS-12 HANDLE HOUSING



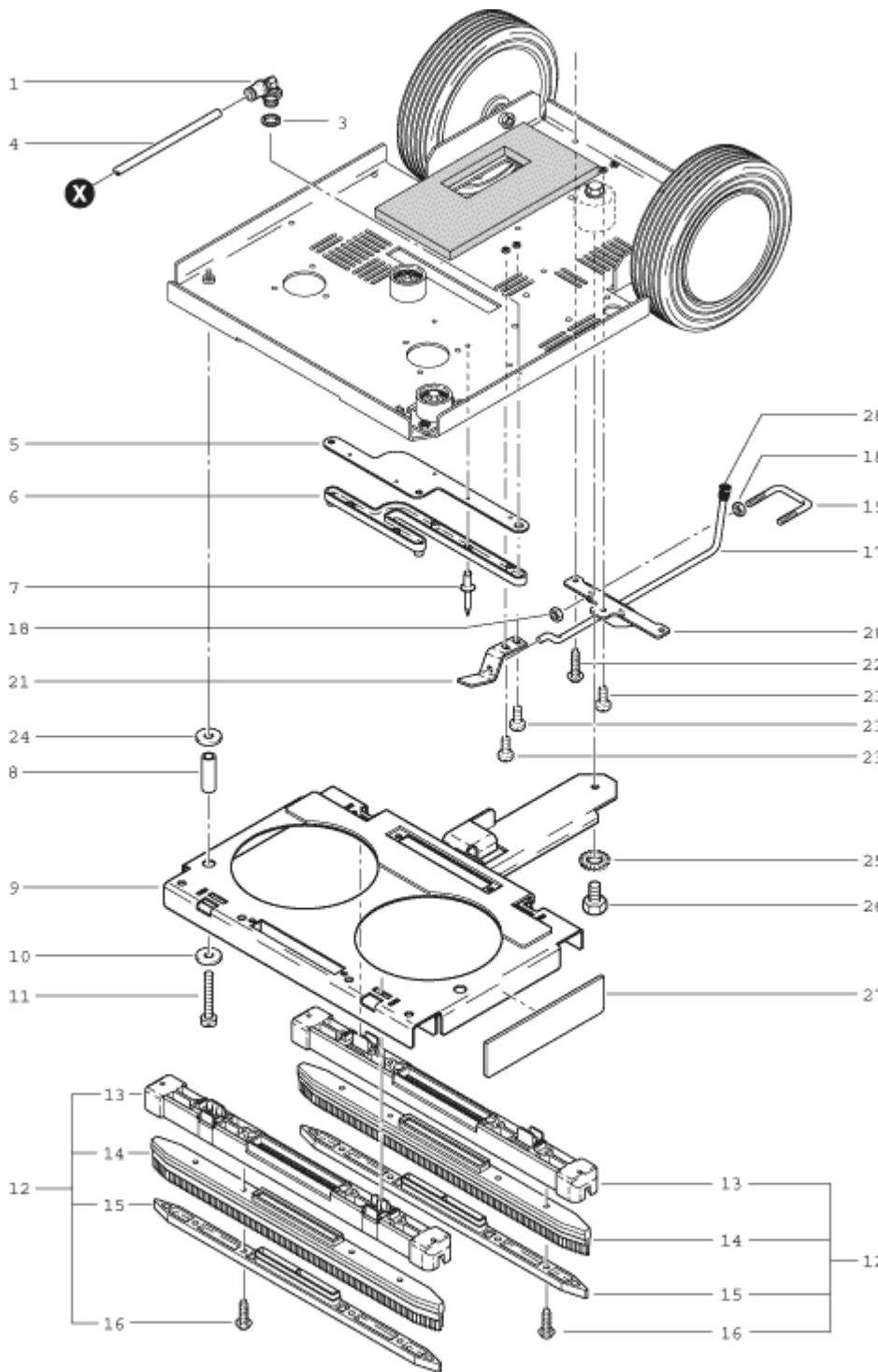
| Pos. | Description             | Reference |
|------|-------------------------|-----------|
| 01   | Handle housing          | 300.610   |
| 02   | Cover for handle        | 300.620   |
| 03   | Controlling lever       | 380.267   |
| 04   | Switch                  | 950.453   |
| 05   | Cable tightener         | 380.252   |
| 06   | PT-screw KA 40x16 mm    | P...516C  |
| 07   | Mains cable Europe      | P...276   |
| 07   | Mains cable Switzerland | P...275   |
| 07   | Mains cable England     | P...276A  |
| 08   | Cable grommet           | P...280   |
| 09   | PT-screw KA 30x18 mm    | P...515A  |
| 10   | Marking plate           | P...394   |
| 11   | Electrical terminal (4) | P...383B  |
| 12   | Tumbler switch          | P...240   |
| 13   | Fixing lever            | 380.262   |
| 14   | Fixing plate            | 380.259   |
| 15   | Pin                     | 380.265   |
| 16   | Cable                   | 300.315   |
| 17   | Lower lever             | 300.615   |
| 18   | Star handle             | 380.276   |
| 19   | Tumbler switch          | P...240H  |

## MS-12 PUMP ASSEMBLY



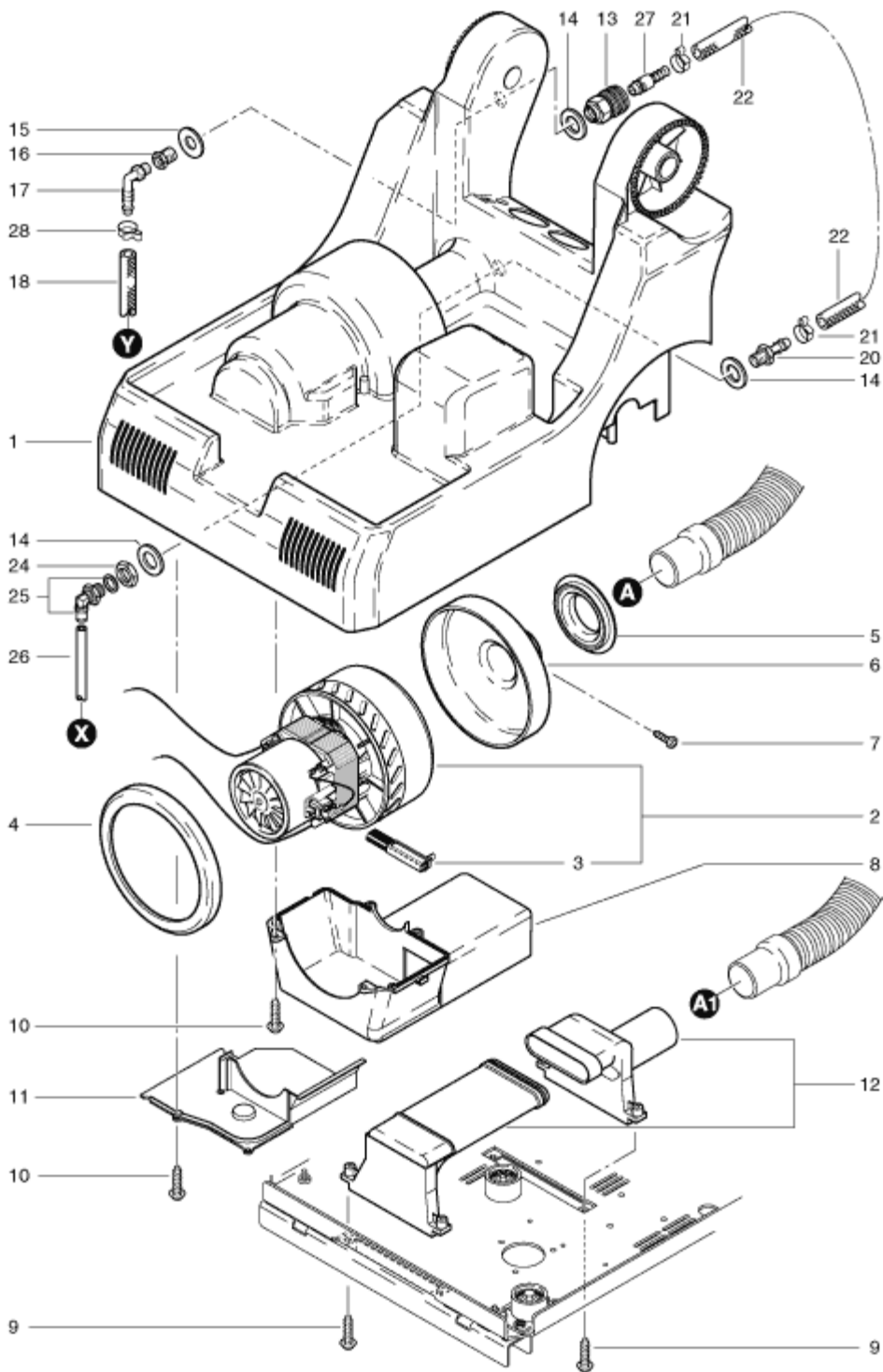
| Pos. | Description                                      | Reference |
|------|--|-----------|
| 01   | Brush motor                                      | 300.281   |
| 01   | NDS-L - pump 220-240V 50Hz                       | P...815   |
| 01   | NDS-L - pump 24V DC                              | P...815 L |
| 02   | Motor fixing plate                               | 300.357   |
| 02   | Ring   | P...815 H |
| 03   | PT-screw KA 40x16 mm                             | P...516G  |
| 03   | Cover  | P...815 B |
| 04   | Air canal cover                                  | 300.058   |
| 04   | Counter ring                                     | P...809 N |
| 05   | Air canal plate                                  | 300.061   |
| 05   | Valve spring                                     | P...809 P |
| 06   | Rubber clamp                                     | P...014A  |
| 06   | Valve cone                                       | P...810 S |
| 07   | Capacitor 5uF                                    | P...385I  |
| 07   | Valve seating                                    | P...809 Q |
| 08   | Plate for electrical terminals                   | 380.047   |
| 08   | O-ring 12x1,5 mm                                 | P...809 L |
| 09   | Electrical terminal (6)                          | P...383C  |
| 09   | O-ring 14x1,5 mm                                 | P...809 K |
| 10   | Screw KA 30x14 mm                                | P...516S  |
| 10   | Counter ring                                     | P...815 X |
| 11   | Suction hose 12/6x530 mm                         | 300.072   |
| 11   | Piston   | P...809 B |
| 12   | Hose clamp 14.5 mm                               | P...550A  |
| 12   | Pressure spring for piston                       | P...809 E |
| 13   | Rubber clamp                                     | P...207A  |
| 13   | Housing pipe                                     | P...815 D |
| 14   | NDS-L pump                                       | P...815   |
| 14   | Spring support                                   | P...809 F |
| 15   | Pump holder                                      | P...207B  |
| 15   | Raising NDS-L                                    | P...815 A |
| 16   | Cover  | P...171N  |
| 16   | Spring support compl.<br>Including: items 8,9+14 | P...810 X |
| 17   | Hexagon nut M4                                   | P...491Q  |
| 17   | Valve seating compl.<br>Including: items 4-9     | P...810 Y |
| 18   | Spring ring M4                                   | P...498A  |
| 19   | Pan head screw M 4x12 mm                         | P...476L  |
| 20   | PT-screw KA 30x6 mm                              | P...515Y  |
| 21   | Capacitor 0.2uF                                  | P...387A  |
| 22   | Holder for capacitor                             | P...109C  |
| 23   | Blind rivet 3x6 mm                               | P...485H  |
| 24   | Cable tightener                                  | 380.251   |
| 25   | Cover for electrical terminals                   | 380.048   |
| 26   | PT-screw KA 40x16 mm                             | P...516C  |
| 27   | Spring ring M4                                   | P...498A  |
| 28   | Spring ring M6                                   | P...497W  |
| 29   | Washer 6/25x1.8 mm                               | P...497Y  |

## MS-12 SUCTION NOZZLE



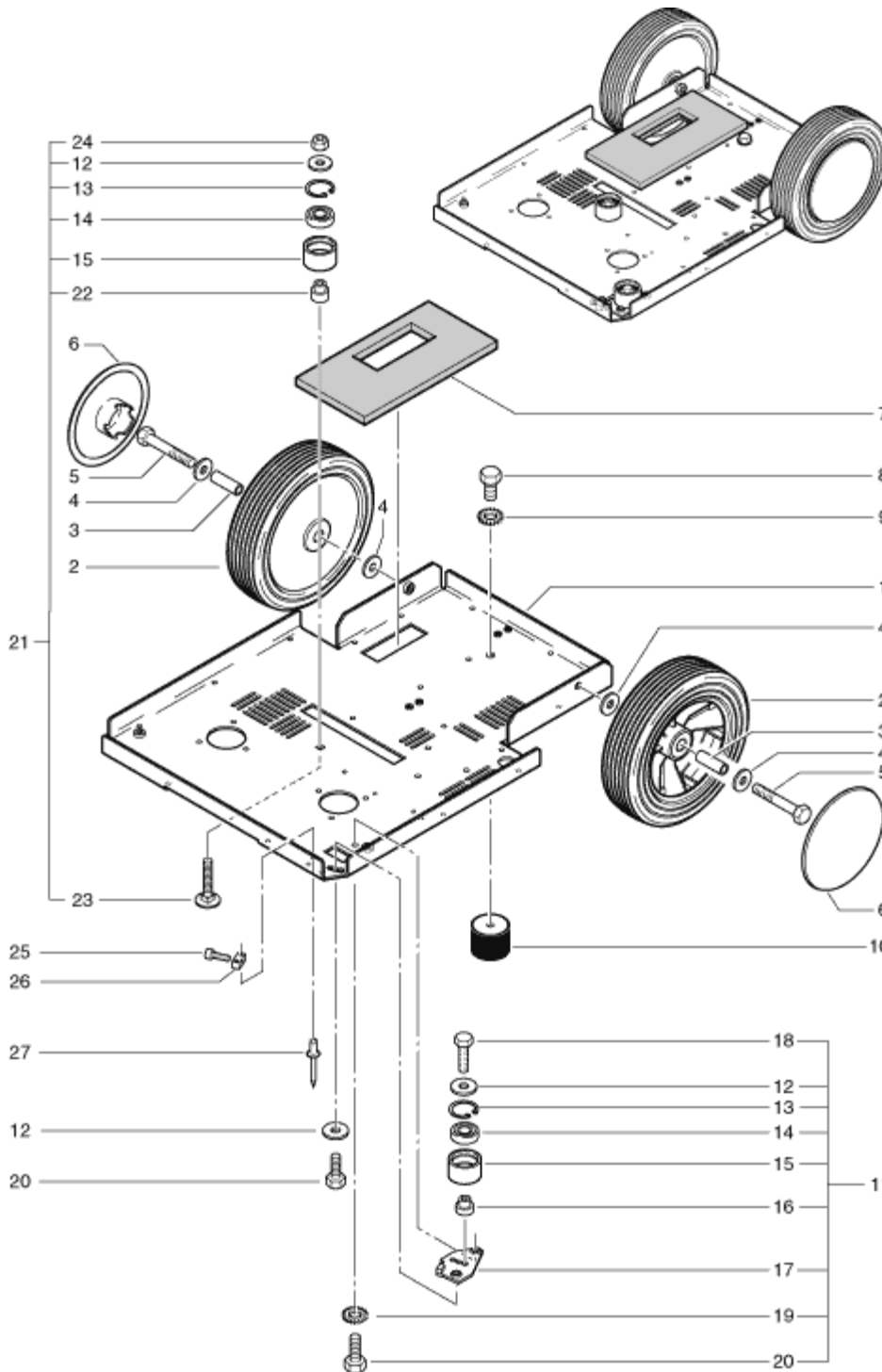
| Pos. | Description  | Reference |
|------|--|-----------|
| 01   | Angled connector                                       | P...533H  |
|      | Sealing ring   | P...533I  |
| 04   | Connection hose<br>640mm                               | 300.165   |
|      | Water canal isolation                                  | 300.081   |
| 06   | Water canal  | 300.022   |
|      | Rivet 3.2x16.2mm                                       | P...485B  |
| 08   | Guide sleeve   | 300.435   |
|      | Suction nozzle holder<br>compl.                        | 300.405   |
| 10   | Washer M6  | P...497W  |
|      | Screw M6x40  | P...477M  |
| 12   | Suction nozzle<br>complete - including:<br>items 13-16 | 300.420   |
|      | Suction nozzle   | 300.425   |
| 14   | Rubber blade   | 300.422   |
|      | Holder for rubber blade                                | 300.428   |
| 16   | PT-screw KA50x16                                       | P...516H  |
|      | Lever  | 300.416   |
| 18   | Hexagon nut M6   | P...490D  |
|      | Protection of lever                                    | 300.411   |
| 20   | Rear guiding holder for<br>lever                       | 300.413   |
|      | Front guiding holder for<br>lever                      | 301.415   |
| 22   | PT-screw KA40x16                                       | P...516C  |
|      | Screw M4x8   | P...481P  |
| 24   | Washer M 6   | P...496L  |
|      | Serrated lock washer<br>M8                             | P...498G  |
| 26   | Hexagon screw M8x10                                    | P...471B  |
|      | Splash protection                                      | 300.312   |
| 28   | Cap black  | P...170K  |

## MS-12 VACUUM MOTOR



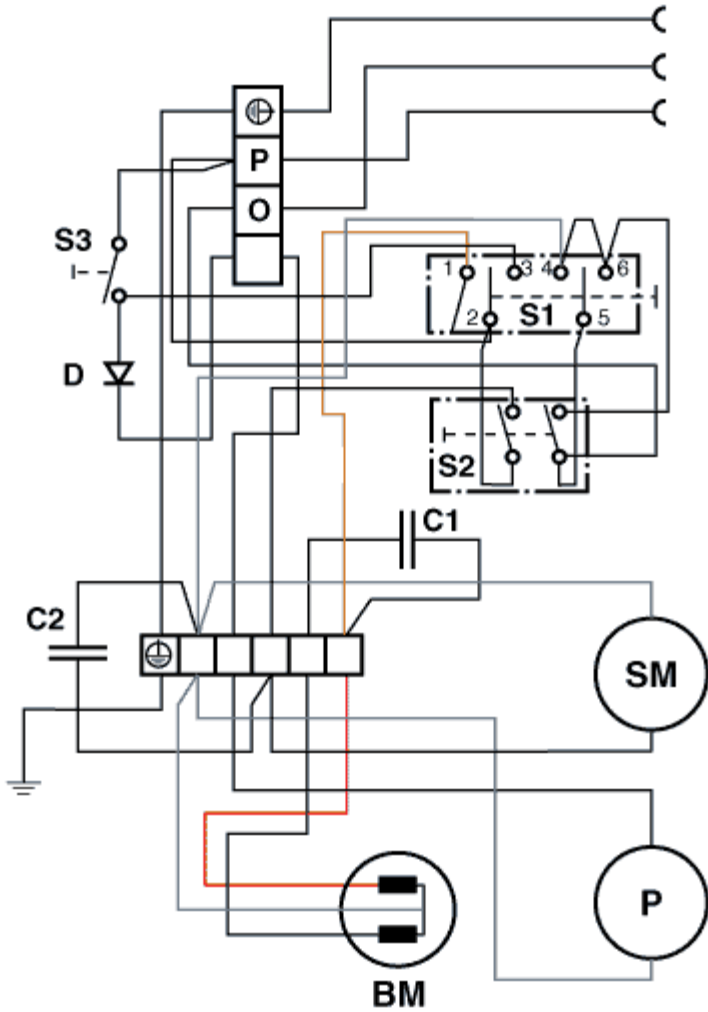
| Pos. | Description                  | Reference |
|------|------------------------------|-----------|
| 01   | Chassis cover                | 300.052   |
| 02   | Suction motor                | P...870C  |
| 03   | Pair of Charbon brushes      | P...870X  |
| 04   | Motor sealing ring           | P...971C  |
| 05   | Sealing ring                 | 380.019   |
| 06   | Hose connection cap          | 380.021   |
| 07   | Screw 2.9x9.5 mm             | P...483H  |
| 08   | Motor cover                  | 380.017   |
| 09   | PT-screw KA 50x16 mm         | P...515Z  |
| 10   | PT-screw KA 40x18 mm         | P...516C  |
| 11   | Air canal cover              | 380.022   |
| 12   | Air canal compl.             | 300.410   |
| 13   | Coupling                     | 380.045   |
| 14   | Security ring                | P...098   |
| 15   | Washer M12                   | P...496A  |
| 16   | Reducer                      | P...521E  |
| 17   | Angled connector             | P...541R  |
| 18   | Pressure hose 6/12x420 mm    | 300.178   |
| 20   | Connecting nipple            | 300.088   |
| 21   | Hose clamp 14.5 mm           | P...550A  |
| 22   | Connection hose 250 mm       | 300.172   |
| 24   | Hexagon nut 3/8««            | P...535B  |
| 25   | Angled connector             | P...533C  |
| 26   | Connection hose 640 mm       | 300.165   |
| 27   | Straight nipple with reducer | 300.085   |
| 28   | Hose clamp 13.3 mm           | P...550I  |

# MS-12 WHEEL



| Pos. | Description                                  | Reference |
|------|--|-----------|
| 01   | Bottom plate                                 | 300.111   |
| 02   | Wheel  | 380.135   |
| 03   | Distance piece                               | 380.137   |
| 04   | Washer M8                                    | P...496Q  |
| 05   | Hexagon screw M 8x55 mm                      | P...471K  |
| 06   | Wheel cover                                  | 300.242   |
| 07   | Isolation                                    | 300.065   |
| 08   | Hexagon screw M 8x10 mm                      | P...471B  |
| 09   | Serrated lock washer M8                      | P...498G  |
| 10   | Round buffer                                 | 300.118   |
| 11   | Idler pulley compl. - including: items 12-20 | 300.375   |
| 12   | Washer M6                                    | P...496L  |
| 13   | Retaining ring dm 28 mm                      | P...499G  |
| 14   | Ball bearing                                 | P...316J  |
| 15   | Pulley d 34x20 mm                            | 300.378   |
| 16   | Bearing pin d 18/12x14.7 mm                  | 300.377   |
| 17   | Fixation for pulley                          | 300.161   |
| 18   | Hexagon screw M 6x20 mm                      | P...472T  |
| 19   | Serrated lock washer M6                      | P...499D  |
| 20   | Hexagon screw M 6x12 mm                      | P...472R  |
| 21   | Guide pulley - including: items 22-24        | 300.385   |
| 22   | Bearing pin                                  | 300.388   |
| 23   | Screw M 6x30 mm                              | P...481G  |
| 24   | Stop nut M6                                  | P...493K  |
| 25   | Hexagon socket screw M 4x14 mm               | P...486F  |
| 26   | holder for pulley                            | 300.387   |
| 27   | Rivet 3.2x12 mm                              | P...485B  |

# MS-12 WIRING



| Pos. |                             | Reference |
|------|-----------------------------|-----------|
| BM   | Brush motor                 | 300.281   |
| C1   |                             | P...385I  |
| C2   | Capacitor                   | P...387A. |
| D    |                             |           |
| P    | Pump NDS-L                  | P...815   |
| S1   |                             | P...240M  |
| S2   | Tumbler switch vacuum motor | P...240   |
| S3   |                             | 950.453   |
| SM   | Vacuum motor 800 W          | P...870C  |