

Pacesetter™ 17HD, 20HD



PARTS LIST

Advance MODELS 56168001, 56168003

This parts list is for machines after serial number 1132208

All models covered in this manual are OBSOLETE



Advance
by Nilfisk-Advance

4/96 revised 5/02 Form Number 56042310

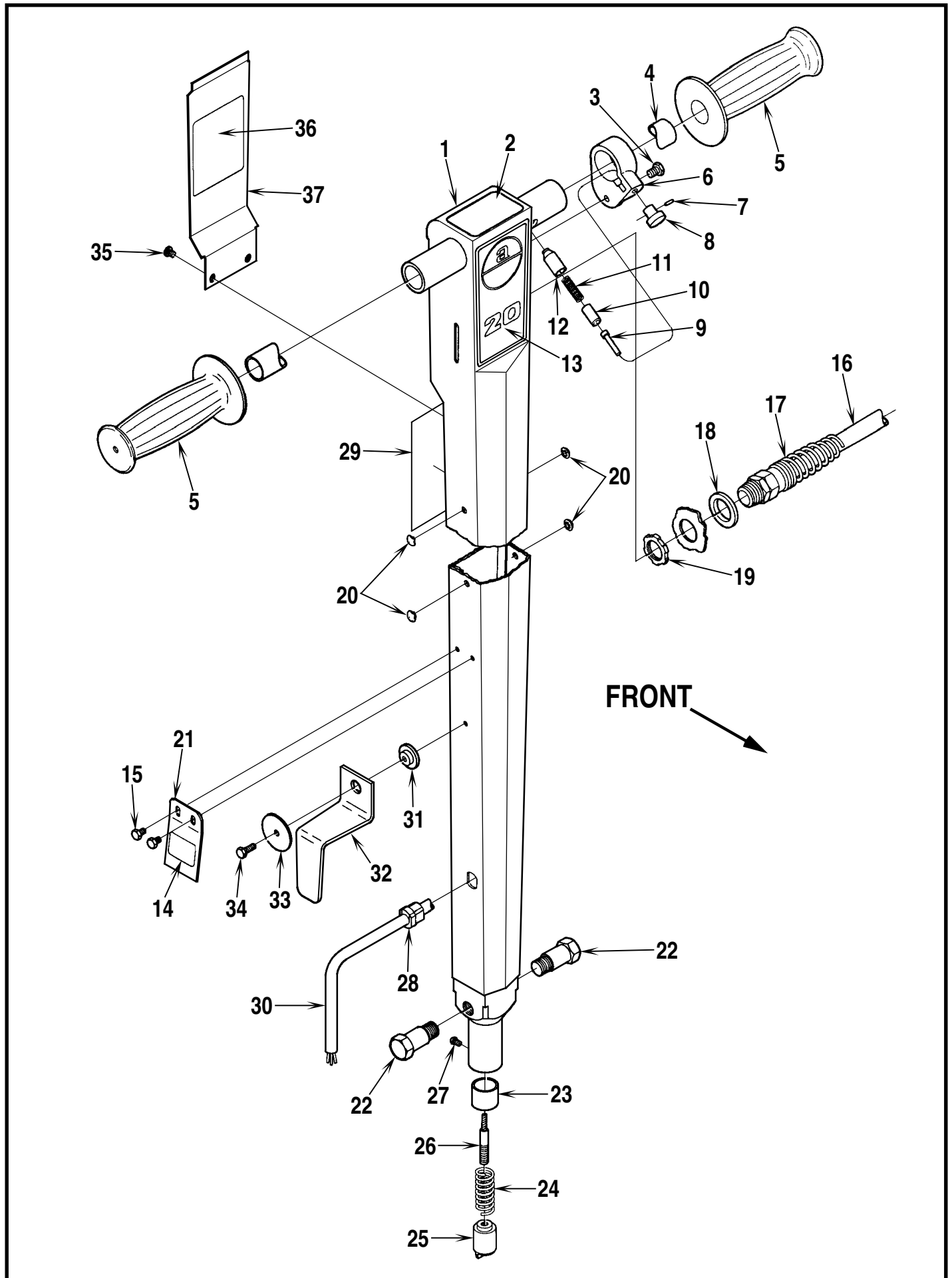
TABLE OF CONTENTS

<u>DESCRIPTION</u>	<u>PAGE</u>
Handle Assembly - Front View	1-2
Handle Assembly - Rear View	3-4
Base System and Pads / Brushes	5-6
Wiring Diagram	6

WHEN ORDERING PARTS

- * Use the 8 digit numbers from the "Part No." columns in this parts list.
- * Specify the model and serial number of the machine.
- * Use the space below to record the model and serial number for future reference.

Model _____ Serial No. _____

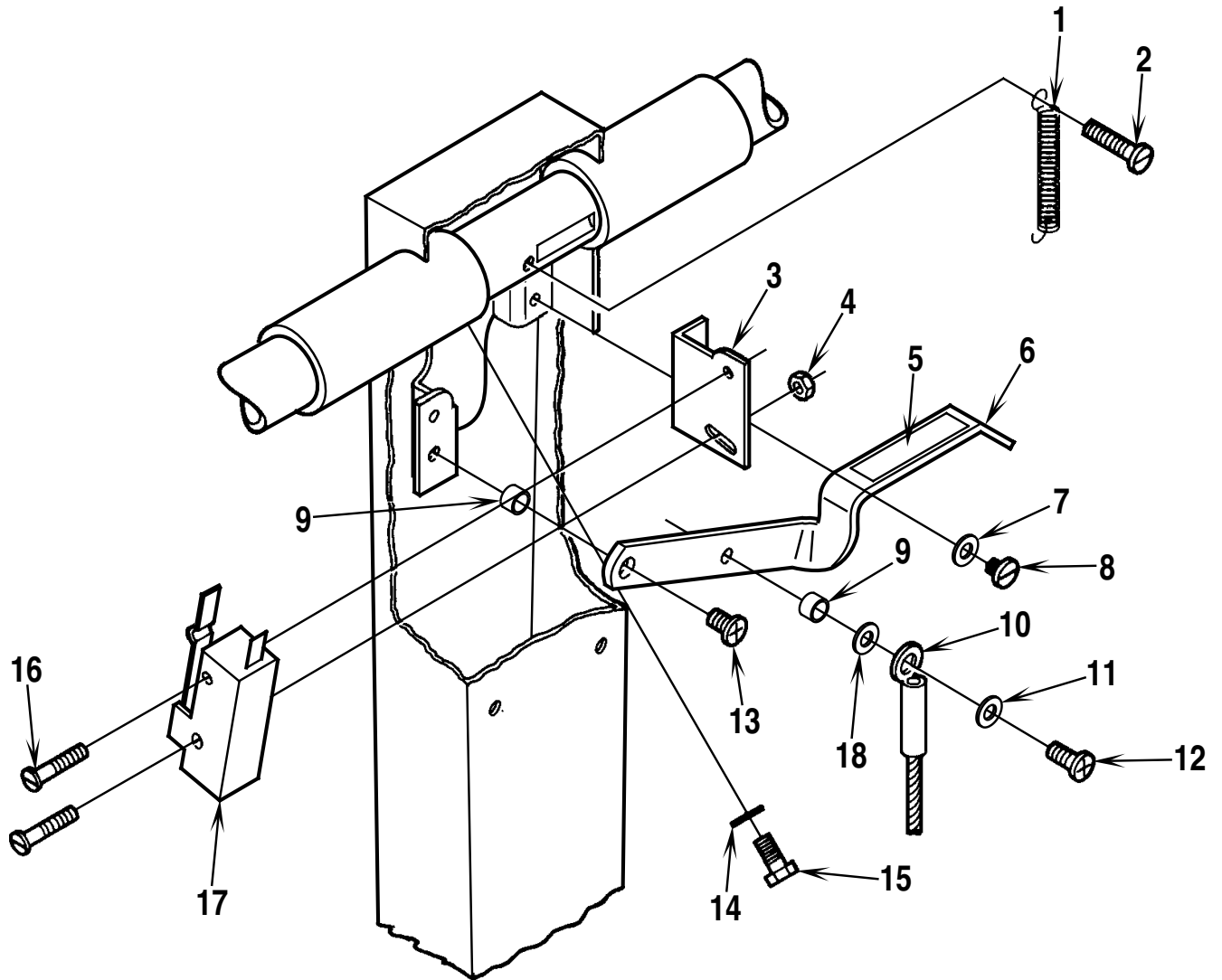


HANDLE ASSEMBLY

Item	Part No.	Qty	Description
	56172298	1	Handle Assembly
1	56172274	1	Handle
2	56014924	1	Decal, Warning
3	56002003	1	Scr, Pan Phil 8-32 x .50
*	56002244	1	Nut, Hex Machine 8-32
4	56171343	1	Handle Tube
5	56388545	2	Hand Grip
6	56172275	1	Collar
	56172321	1	Collar Assembly (#6-9)
7	56003129	1	Pin
8	56201405	1	Knob
9	56172217	1	Pin
10	56171279	1	Plunger
11	56201448	1	Spring
12	56171281	1	Bushing
13	56014096	1	Decal, 20HD
*	56014085	1	Decal, 17HD
14	56018336	1	Decal, Cord Hook
15	56009030	2	Scr, Pan Phil Thd Form 10-24 x .38
16	56524069	1	Cord Set
17	56109630	1	Strain Relief
*	56109632	1	Brass Insert for 109630
18	56171093	1	Washer
19	56009095	1	Nut, Conduit Lock 1/2-14
20	56153699	4	Button Plug
21	56172272	1	Spring
22	56171336	2	Shoulder Bolt
23	56171269	1	Bushing
24	56171361	1	Spring
25	56171132	1	Plunger
26	56171373	1	Cable
27	56001851	1	Scr, Rnd Drive 4-40 x .25
28	56382818	1	Strain Relief
29	56014828	1	Decal, Warning
30	56171128	1	Cord Set
31	56387678	1	Bushing
32	56172271	1	Cord Hook
33	56009145	1	Wsh, Flt .21 x 1.375 x .10
34	56009042	1	Scr, Pan Phil Thd Form 10-24 x .62
35	56009051	2	Scr, Pan Phil Thd Form 8-32 x .38
36	56014326	1	Decal, Important
37	56172273	1	Cover

* = Not Shown

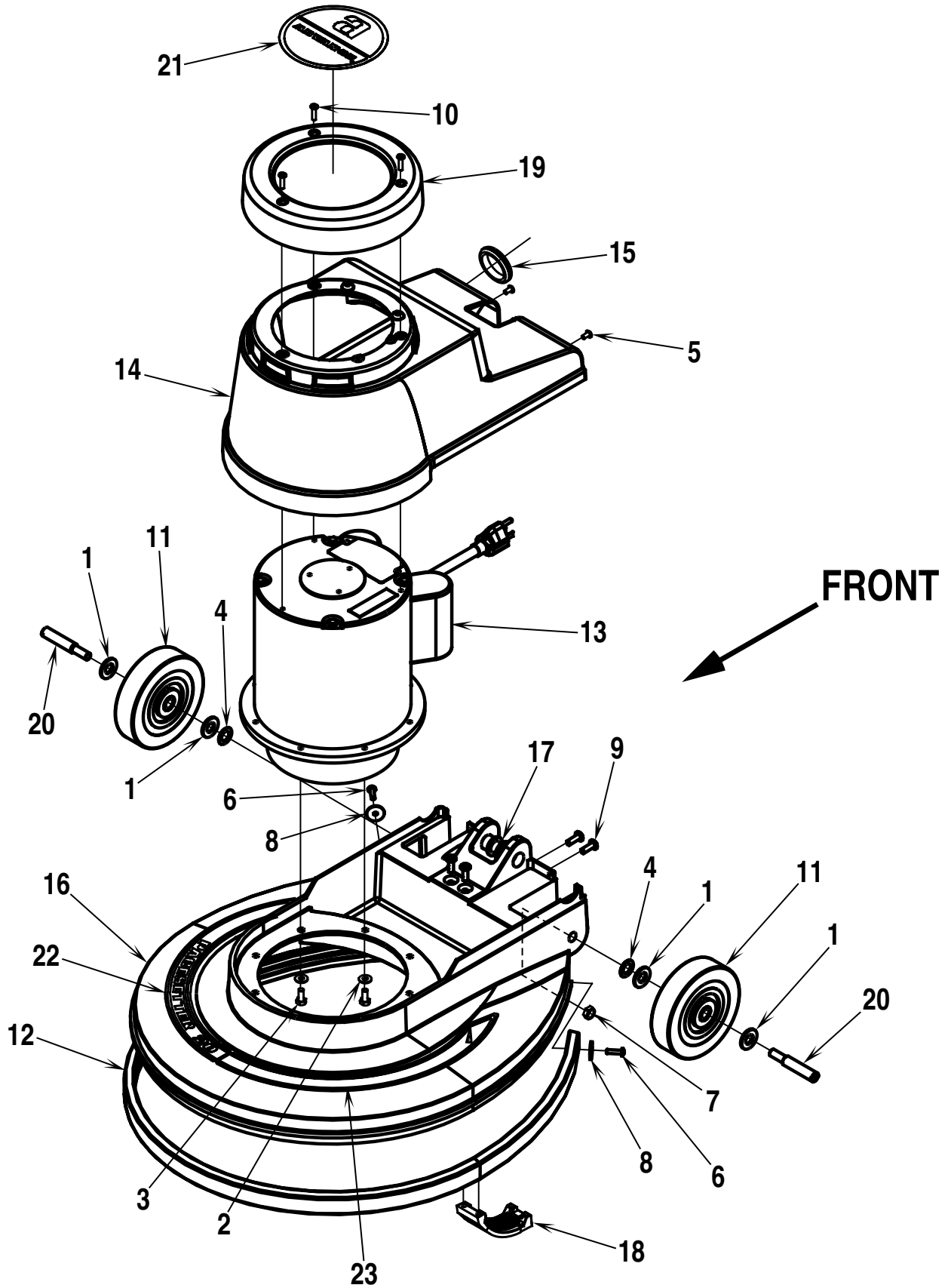
←
FRONT



HANDLE ASSEMBLY - REAR VIEW

Item	Part No.	Qty	Description
1	56445177	1	Spring
2	56009034	1	Scr, Pan Phil Thd Form 8-32 x .88
3	56171209	1	Bracket
4	56002848	1	Nut, Hex Nyl Loc Thin SS 4-40
5	56014856	1	Decal, Lever
6	56171126	1	Lever
7	56009010	2	Wsh, Int Shprf #8
8	56009036	2	Scr, Pan Phil Thd Form 8-32 x .25
9	56151092	2	Spacer
10	56171373	1	Cable
11	56001954	1	Wsh, Flt #10
12	56009029	1	Scr, Pan Phil Thd Form 10-24 x .50
13	56009030	1	Scr, Pan Phil Thd Form 10-24 x .38
14	56009052	1	Wsh, Int Shprf 5/16
15	56234079	1	Scr, Machined Shank 5/16-18
16	56003104	2	Scr, Hex 4-40 x 1.00
17	56385615	1	Switch
18	56009125	1	Wsh, Bowed
*	56321737	1	Wire Nut
*	56478246	1	Cable Tie

* = Not Shown

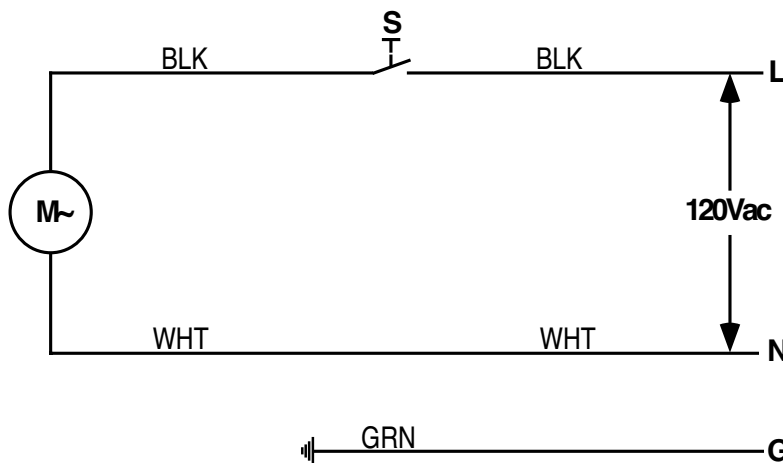


BASE SYSTEM

Item	Part No.	Qty	Description	Item	Part No.	Qty	Description
1	56001879	4	Wsh, Flt SAE 1/2	**	56201062	A/R	15 lb Stripping Weight
2	56002098	8	Wsh, Flt SAE 1/4	**	56505910	1	Short-Trim Pad Holder 17HD
3	56002922	8	Scr, Hex Hd Loc 1/4-20 x .62	**	56505920	1	Short-Trim Pad Holder 20HD
4	56009001	2	Wsh, Bowed .51 x .90 x .008	**	56505270	1	Level Set Pad Holder 17HD
5	56009030	2	Scr, Pan Phil Thd Form 10-24 x .38	**	56505280	1	Level Set Pad Holder 20HD
6	56009043	2	Scr, Pan Phil Thd Form 10-24 x .75	**	56505915	1	ProLite™ Brush 17HD
7	56009085	2	Nut, Hex Jam 3/8-16	**	56505925	1	ProLite™ Brush 20HD
8	56009096	2	Wsh, Flt .19 x .87 x .06	**	56505914	1	Prolene Brush 17HD
9	56009126	4	Scr, Pan Phil Thd Form 1/4-20 x .75	**	56505924	1	Prolene Brush 20HD
10	56009209	3	Scr, Pan Phil Thd Form 10-24 x 1.00	**	56505911	1	Magna Grit™ 46 Brush 17HD
11	56161691	2	Wheel	**	56505921	1	Magna Grit™ 46 Brush 20HD
12	56168011	1	Bumper, 20HD	**	56505912	1	Dyna Grit™ 80 Brush 17HD
*	56168009	1	Bumper, 17HD	**	56505922	1	Dyna Grit™ 80 Brush 20HD
13	56168013	1	Motor Assembly	**	56505918	1	MidLite Grit™ 180 Brush 17HD
*	56168167	1	Planetary Gear System	**	56505928	1	MidLite Grit™ 180 Brush 20HD
*	56168168	1	Motor W/O Gear System	**	56505917	1	MidGrit™ 240 Brush 17HD
*	56201623	1	Switch, Stationary	**	56505927	1	MidGrit™ 240 Brush 20HD
14	56168015	1	Cover	**	56505913	1	AgLite™ 500 Brush 17HD
15	56168017	1	Grommet	**	56505923	1	AgLite™ 500 Brush 20HD
16	56168403	1	Housing, 20HD	**	56505916	1	Union Mix Brush 17HD
*	56168303	1	Housing, 17HD	**	56505926	1	Union Mix Brush 20HD
17	56171095	2	Bearing, Flange	**	56505539	1	Soft-Touch™ Shampoo Brush 17HD
18	56171104	1	Ratchet	**	56505540	1	Soft-Touch™ Shampoo Brush 20HD
19	56201019	1	Cover, Motor	**	56506006	A/R	Clutch Plate for Above Brushes
20	56520845	2	Axle	**	56393567	A/R	"Big Mouth" Pad Retainer
21	56014513	1	Decal, Logo				
22	56015879	1	Decal, Stripe Right 20HD				
*	56015877	1	Decal, Stripe Right 17HD				
23	56015878	1	Decal, Stripe Left 20HD				
*	56015876	1	Decal, Stripe Left 17HD				

* = Not Shown
 ** = Optional

NOTE: Pad Holders and Brushes come complete with Industry Standard NP-92 Clutch Plate PN 56506006.



WIRING DIAGRAM

Item	Part No.	Qty	Description
S	56385615	1	Switch, N.O. SPST Snap
M	56168013	1	Motor, 115V 1.50HP, 10:1



Nilfisk-Advance, Inc.
14600 21st Avenue North
Plymouth, MN, 55447-3408
www.nilfisk-advance.com
Phone: 800-989-2235
Fax: 800-989-6566
©2002 Nilfisk-Advance, Inc.,
Plymouth, MN 55447-3408
Printed in the U.S.A.