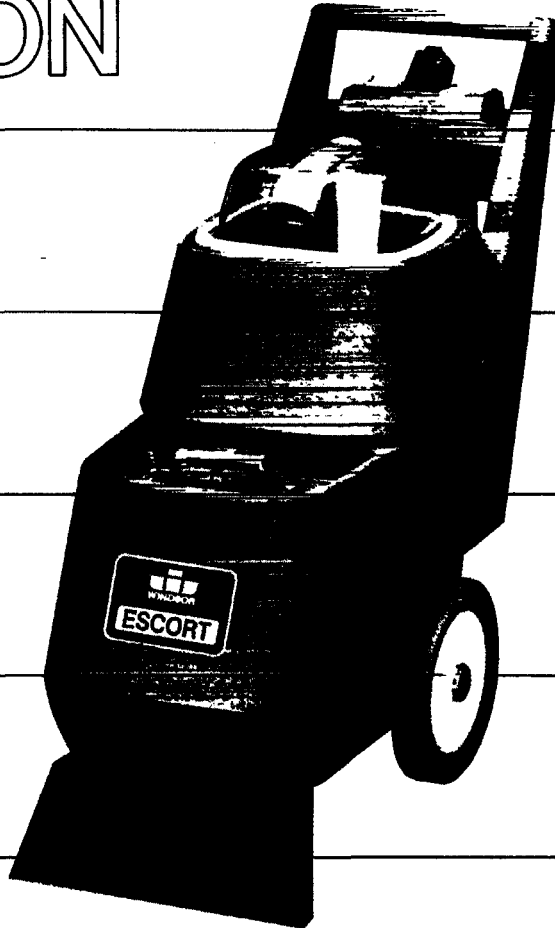


ESCORT



INSTRUCTION MANUAL

- OPERATION
- CARE
- SERVICE



Models ESC / EPB



INSPECTION

Carefully **unpack** and inspect your extractor for **shipping damage**. Each unit is operated and **thoroughly inspected before shipping**, and any damage is the **responsibility of the carrier** who should be notified immediately.

ELECTRICAL

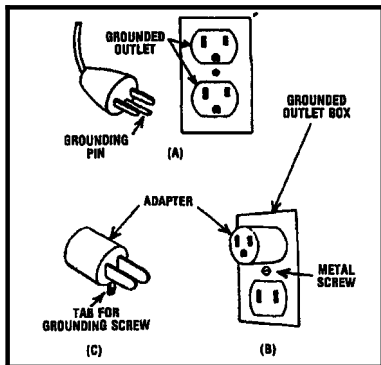
This extractor **operates** on a standard 15 amp, 115 volt **AC circuit**. Voltages **below 105 volts** or above **125 volts** could cause serious damage to motors. *230 volt 50 hz model available.

WARNING: Make sure you are using the correct voltage as **specified** on nameplate before connecting machine power cord to outlet.

GROUNDING INSTRUCTIONS

To protect the operator from electric shock, this machine must be grounded while in use. The machine is equipped with an approved **three-conductor power cord** and three-prong grounding type plug to fit the proper **grounding type receptacle**. The vacuum power **cord has a plug** as shown in Fig. A, if a receptacle connected to the **electrical ground** as shown in Fig. A is not available use an adapter as shown in Fig. C. The **adapter** must be connected to an **electrical ground** in the electrical outlet, using metal screw shown in Fig. B.

WARNING: To avoid electric shock, use indoors only.



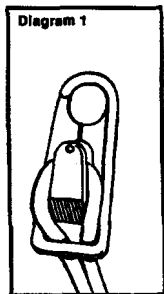
EXTENSION CORDS

if an extension cord is used, the wire size must be at least one size **larger** than the **power cord** on the **machine** and must be limited to **50 feet** in length. The ESCORT is equipped with a 50 ft. 14/3 power cord.

EQUIPMENT SETUP

NOTE: Attach strain relief/cord retainer to power cord.

1. Make loop in power cord approximately 12" from twist lock receptacle end.
2. Slide cord loop through slot in retainer and over retainer arm. Pull slack cord back through slot to secure.



3. Plug power cable from machine into properly grounded wall outlet.

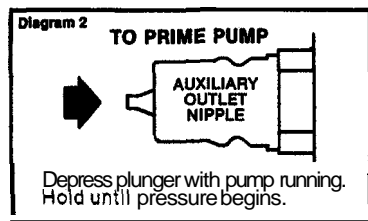
4. Using a clean container, fill solution tank with hot water. The maximum capacity of the ESCORT is 7 gallons. Mix in a nonfoaming cleaning concentrate for use in hot water extraction machines at the proportions noted on the container for various carpet soil conditions.

NOTE: When using a powder cleaner, premix with hot water in clean container before adding to solution tank.

OPERATING THE ESCORT

NOTE: Vacuum the carpet and make sure it is cleared of surface debris before starting the cleaning process.

NOTE: Pump Priming: If the machine has been in **storage** or the pump runs dry—air entrapment within the solution line can occur. This is alleviated by **depressing the tip of the auxiliary nipple** momentarily while the pump is running.



1. Dispense solution by using either the **continuous flow switch** for large open areas or the **intermittent switch** for cleaning smaller more confined areas. If machine is equipped with power brush Switch on power brush, depress pedal to **Lower brush head assembly**. Walking backwards move the machine over the area to be cleaned. Turn solution off about 8 inches before the end of each pass to insure all solution is removed from the carpet. When through cleaning depress pedal to **Raise brush head assembly**. Switch off vac and brush switches.

WARNING: Do not leave power brush running when machine is not in cleaning mode. Damage to carpet could occur.

2. As you work, check to see if there is a foam buildup in the recovery tank. if there is a foam buildup, turn the machine off and add the recommended amount of a defoaming solution to the recovery tank.

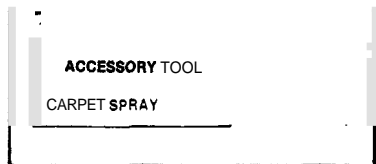
NOTE: Never put defoamer in the solution tank.

WARNING: An overflow of foam into the vacuum intake can damage the vac motor. Always be aware of the waste water level in the recovery tank. When the tank is about three-quarters full, turn off the machine, remove drain hose from keeper and empty dirty water into bucket or floor drain.

3. When machine runs out of cleaning solution, turn off the machine and refill the solution tank. Turn machine on and continue cleaning process.

OPERATING THE ESCORT WITH ACCESSORY TOOLS

The ESCORT can easily be used for use with Windsor hand tools and floor tools.



NOTE: Turn solution control valve off before connecting any accessory tools.

1. Turn solution control valve to "carpet spray" to accessory tool. (See Diagram 3.)
2. Remove cap from dome and insert carpet spray tool in its slot.
3. Attach solution hose from accessory tool to solution outlet nipple on back of machine.
4. Make sure that sufficient amount of cleaning solution is in solution tank and that the dome is in place and ready for operation.
5. Turn on vacuum and brush pump switches.

CAUTION: Do not switch on power brush when using ESCORT with accessory tools.

NOTE: Make sure the solution control valve is returned to the "carpet spray" position before using ESCORT for carpet cleaning.

DAILY/REGULAR MAINTENANCE

WARNING: Before making any adjustments or repairs to the machine, disconnect the power cord from electrical source.

1. Empty unused cleaning solution from solution tank.
2. inspect and clean filter screen in solution tank.
3. Flush pumping system with 1 to 2 gallons of clean hot water.
4. Empty and clean recovery tank with clean water.
5. Checkspray jets daily for full spray pattern.
6. Check for and remove any debris or lint buildup from vac shoe.
7. On power brush models remove lint and dirt build-up from brush and housing.

PERIODIC MAINTENANCE

1. Twice a month flush a white vinegar solution (one quart vinegar to one gallon of hot water) or an anti-browning solution (mixed as directed) through the ESCORT. This will help prevent buildup of alkaline residue in system.
2. if spray jets become clogged, remove the spray tips, wash them thoroughly in vinegar and blow dry. **NOTE** Do not use pins, wires, etc. to clean jets as this will destroy spray pattern.

3. If spray jets continue to drip after solution pump is turned off, the solenoid valve will need cleaning. (See MAINTENANCE on Solenoid Valve.)
4. Periodically inspect all cables, and on your cables. Because the cable will be on wet surfaces, the cable should be kept dry or repaired or replaced immediately. Make char with an electrical fire or shock.

PROTECT FROM FREEZING

if it becomes necessary to store the machine in temperatures below 40°, the pumping system, valves, etc. must be protected from freezing with a methyl hydrate (window washer) antifreeze solution.

NOTE: Do not use ethylene glycol or cooling system antifreeze.

1. Add window washer antifreeze to the solution tank. Turn on pump until solution sprays out of jets. Remove unused portion of antifreeze from tank.

MAINTENANCE INSTRUCTIONS FOR ESCORT AND ESCORT w/ POWER BRUSH

WARNING: Remove machine power cord from electrical source before making any repairs or adjustments to the machine.

TO ACCESS VAC MOTOR/ PUMP ASSEMBLY

Remove solution from both tanks.

1. **SOLUTION TANK** Attach the 4 ft. vac hose, supplied with machine, to dome. Switch on vac motor and vacuum unused solution into recovery tank.

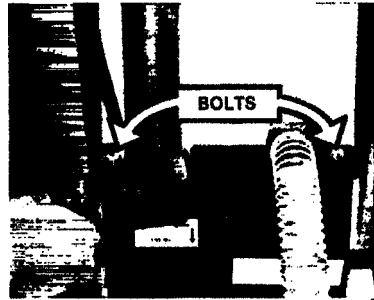


2. **RECOVERY TANK** Remove drain hose from keeper and empty solution into bucket or floor drain.

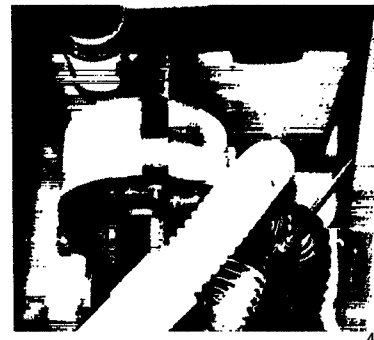


VACUUM MOTOR

1. Remove (2) tank mounting bolts from rear chassis panel.



2. Lift up recovery tank to access vac exhaust hose. Disconnect hose from vac motor, motor wire leads and remove tank/vac motor.



3. To inspect motor brushes, remove brush holder assembly. Brushes should be replaced when worn to 3/8 inch or after about 250 operating hours. After second brush replacement the armature commutator should be checked for pitting and concentricity. Vac motors can be repaired but such repairs should be made by a qualified motor repair shop.

NOTE: When reinstalling tank/vac motor make sure the vac recovery hose is routed ABOVE exhaust horn on vac motor.



SOLENOID VALVE

if the machine continues to drip solution from manifold after pump is switched off check for: (A) Alkaline build up in solution lines (B) Lint or debris lodged in solenoid valve.

1. Remove (2) tank mounting bolts from rear chassis panel. (Refer to Photo 3). Remove recovery tank/vac motor assembly.
2. Remove left wheel to access valve retaining screws.



3. Remove inline solenoid valve: Clean, repair or replace as required.

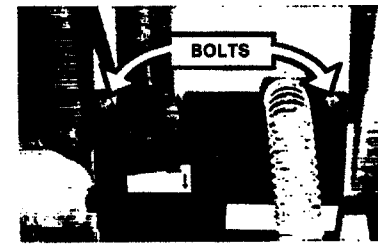


CAUTION: When installing solenoid valve make sure that solution flow direction as indicated on valve is toward manifold.

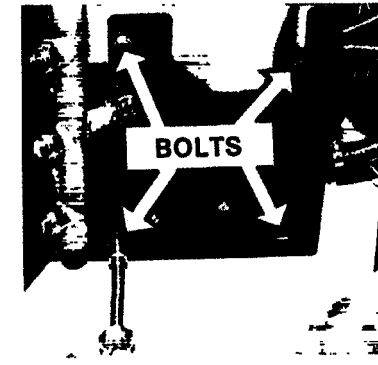
PUMP ASSEMBLY

NOTE: On power brush replacement of brush heads is critical to this pump. (See Power Head F)

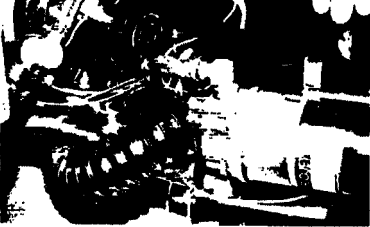
1. Remove (2) tank mounting bolts from rear chassis panel.



2. Lay machine on right side and remove (4) bolts holding pump mounting plate.



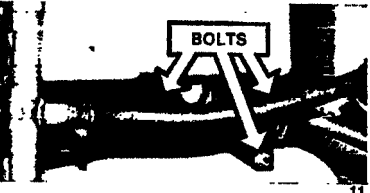
3. Disconnect pump motor wire leads. Disconnect solution hoses from pump head and remove pump. Refer to pump drawing for replacement parts.



CAUTION: When replacing hose-ends on pump head — **DO NOT OVERTIGHTEN** — as this could crack intake and discharge ports in pump head.

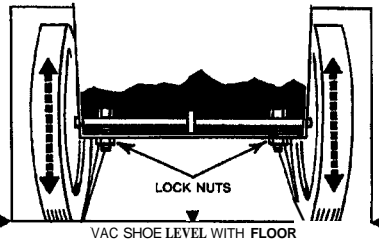
VAC SHOE

1. Remove (4) bolts holding chassis and pump plate to tanks. (Refer to Photos 3 & 9)
2. Remove (3) bolts holding vac shoe/bracket to solution tank. Repair or replace as required.



NOTE When reinstalling a new vac shoe, proper alignment of shoe to floor must be made.

1. Install vac shoe and tighten screws. Attach chassis and pump plate assembly to tank and tighten screws.
2. Set machine upright on a flat-level surface (a desk top works well) and check vac shoe for level contact on the flat surface.



3. Make adjustment at axle leveling screws by tightening /loosening both of the lock nuts until shoe is level.

TRANSPORT WHEELS

1. Remove screw and hub cap and slide wheel off axle. Before reinstalling wheel, clean axle and apply light coating of silicone lubricant.



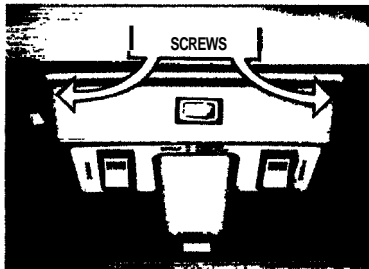
VAC MOTOR EXHAUST FILTER

1. Remove (4) bolts holding chassis to tanks. (Refer to Photos 3 & 9)
2. Lay machine on side. Pull chassis from tanks to expose exhaust muffler.
3. Remove hex nut from PVC muffler. Repair or replace as required.



SWITCH CONTROL PANEL

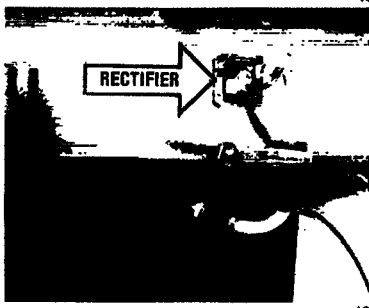
1. Remove (2) screws holding switch housing to handle. (EPB housing shown)



2. Replace switches as required.

SERVICING POWER HEAD BRUSH MOTOR/RECTIFIER

1. Tilt machine back to rest on handle.
2. Remove (6) screws holding motor and plate to housing. Repair/replace motor rectifier as needed.



BELT ADJUSTMENT

1. When servicing brush motor or brush assembly always check belt for proper tension. The belt should be taut to prevent it from slipping on cogged pulleys. To tighten belt, loosen motor mounting nuts and rotate motor rearward just enough to tighten belt.



BRUSH/BEARING ASSEMBLY

1. Remove belt guard.

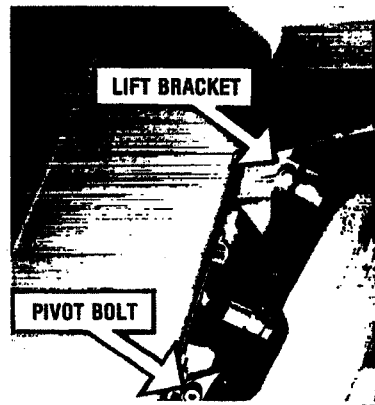


2. Remove screw from each end of brush shaft and remove brush assembly from housing. Replace brush or bearings as needed.



POWER HEAD LIFT CABLE

1. Remove recovery tank/vac motor assembly.
2. Tilt machine back to rest on handle. Remove bolt holding cable to lift bracket and (2) power head pivot bolts.



- Remove guide pulley bracket assembly and remove cable from pulley.



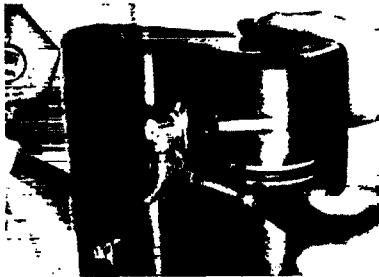
- Remove pedal and bracket assembly (4 screws). Replace cable as required.



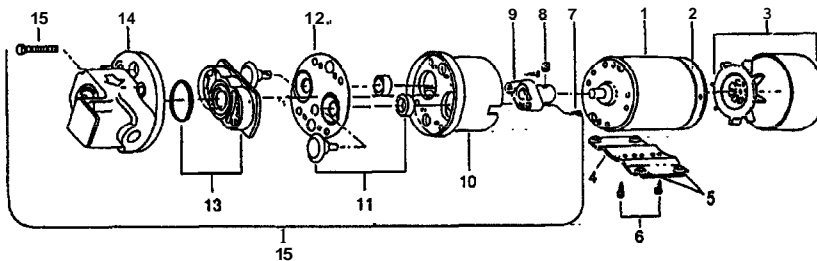
Reinstall pedal assembly and power head assembly. To adjust cable depress cable so that power head almost touches vac shoe housing. Raise and lower power head with pedals to make sure that head will "lock" in UP position when pedals depressed.

POWER HEAD REMOVAL

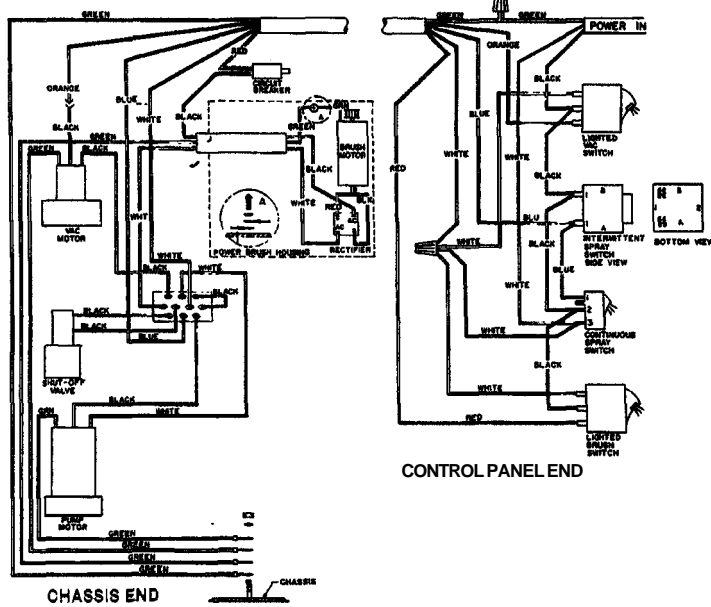
- Tilt machine back to rest on handle. Remove brush motor and plate assembly. (See Photo 15)
- Disconnect power cord from rectifier. Loosen strain relief and pull cord from housing. (See Photo 16)
- Remove cable from lift bracket and (2) pivot bolts. (See Photo 20)
- Disconnect solution hose from elbow and lay head aside.



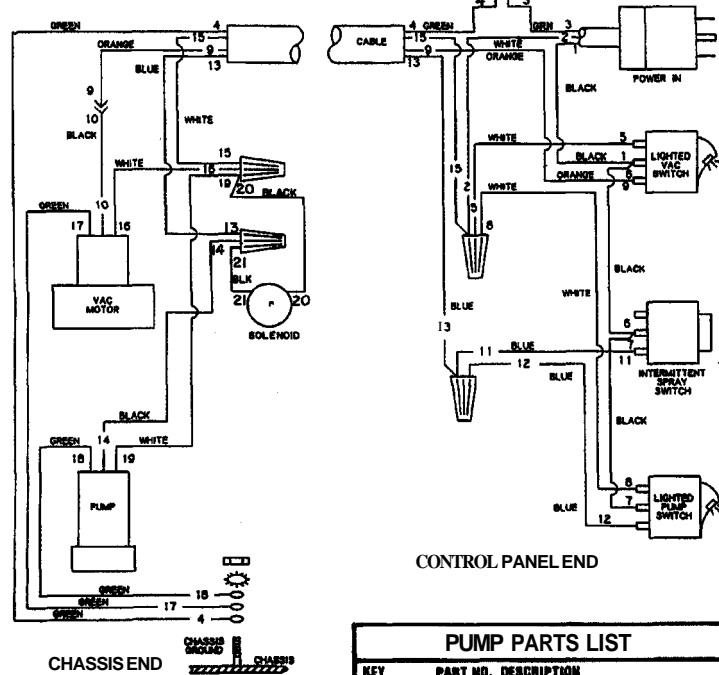
PUMP ASSEMBLY



WIRING DIAGRAM EPB CHASSIS ASSEMBLY



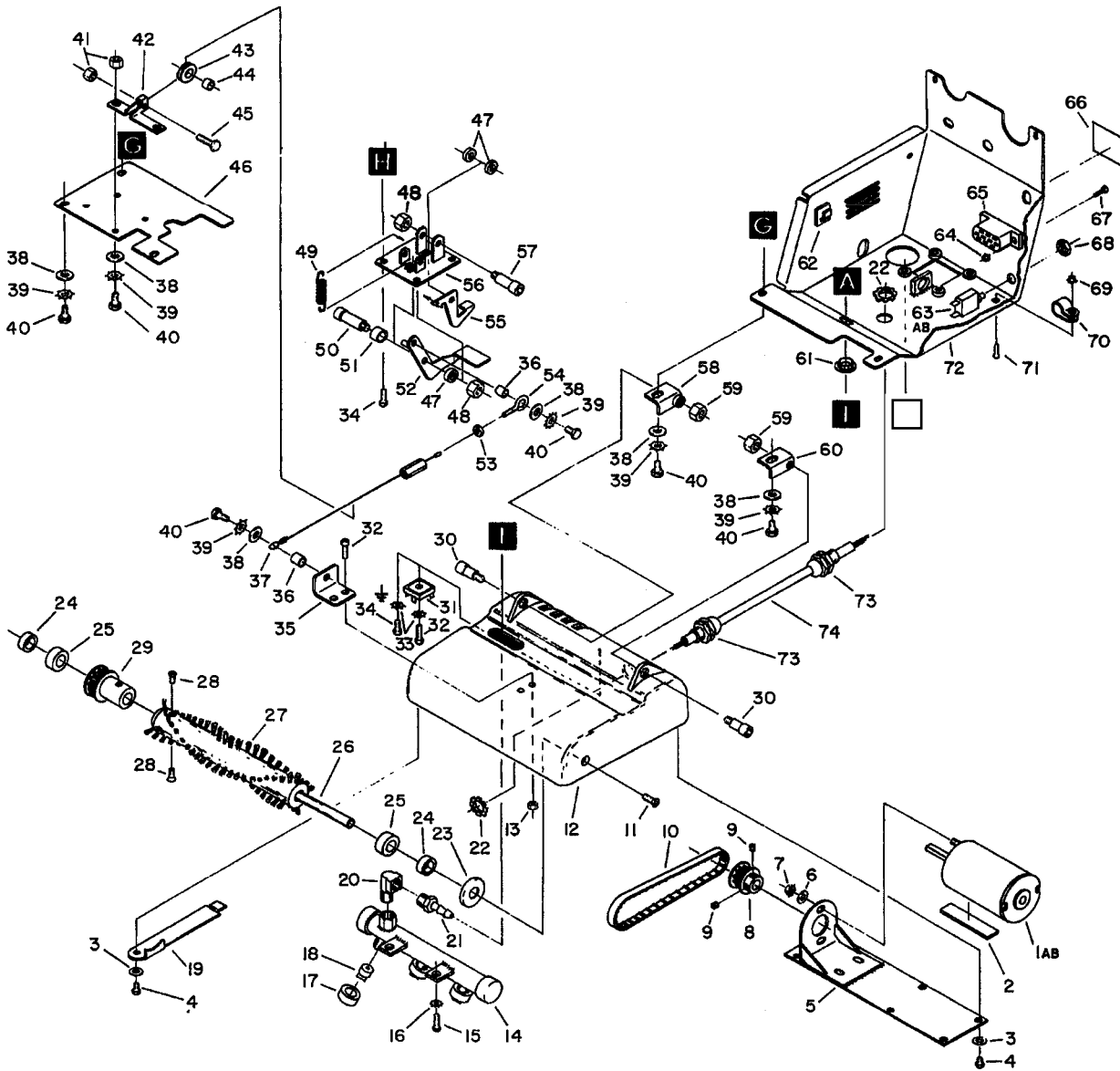
WIRING DIAGRAM ESC 115V



PUMP PARTS LIST

KEY	PART NO.	DESCRIPTION
1	53118	Motor 115V (for 65067)
1A	53119	Motor 230V (for 65070)
2	67071	Rectifier/End Bell Asm. 115/230V
3	47075	Fan/Shroud Asm.
4-5-6	47076	Kit, Base Plate
7-8-9-11-12-13	47087	Kit, Pump Repair (for 65067 & 65070)
10	27225	Bearing Cover
14	41086	Pump Housing
15A	65071	Pump Head Asm. 115V (for 65067)
15B	65072	Pump Head Asm. 230V (for 65070)

POWER BRUSH ASSEMBLY (EPB Only)

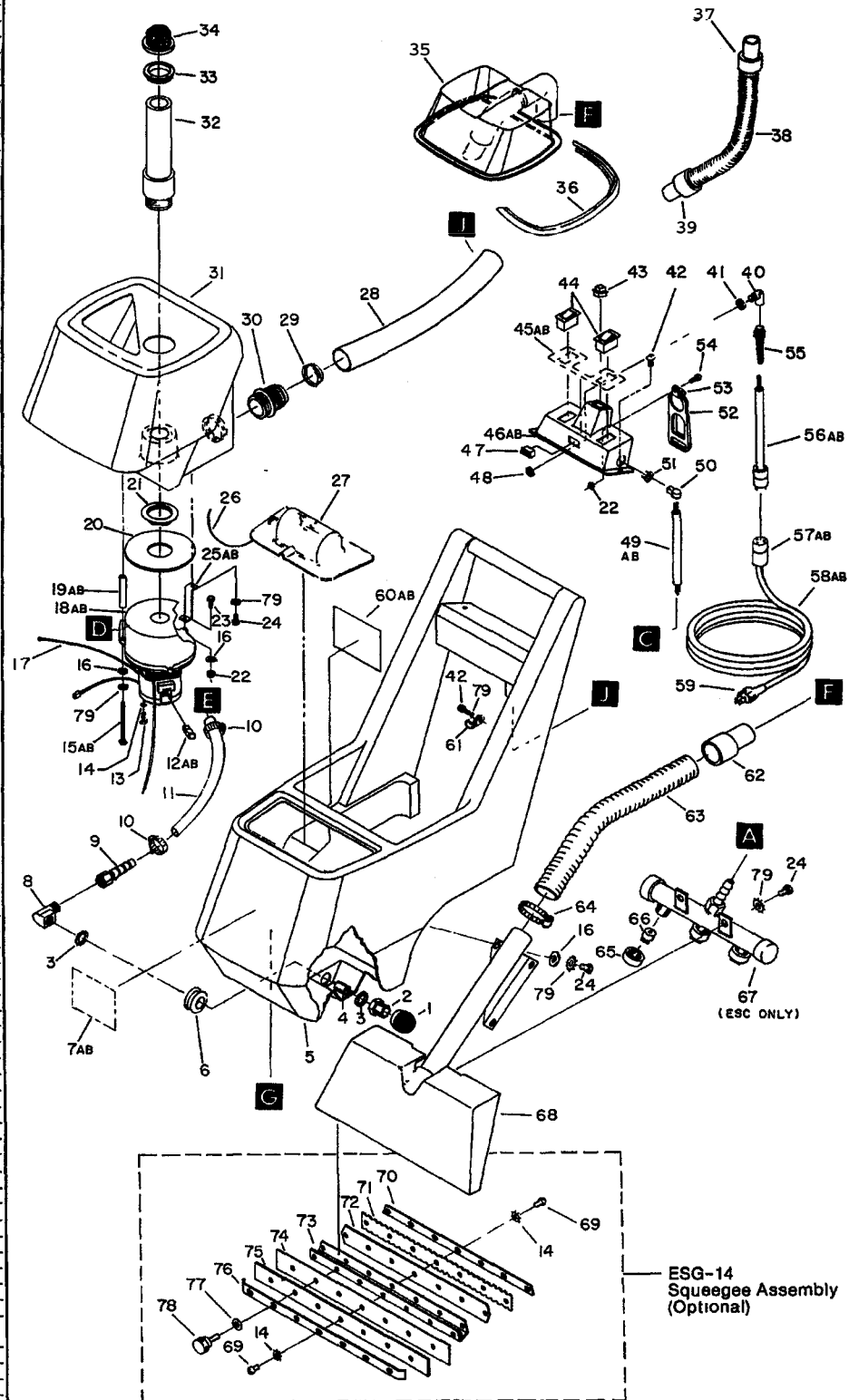


POWER BRUSH ASSEMBLY (EPB Only)

KEY	PART NO.	DESCRIPTION	KEY	PART NO.	DESCRIPTION	KEY	PART NO.	DESCRIPTION
1A	53146	Motor, 115V DC Brush Drive	19	62134	plate, Belt Cover	38	87013	Washer, .114 ID x 5/8 OD
1B	53147	Motor, 230V DC Brush Drive	20	31016	Elbow, 1/4 NPT Street	39	87026	Washer, 1/4 Star
2	36071	Gasket, 1/8 x 1 x 5	21	40014	Hose Barb, .114 MPT x 3/8	40	70020	Scr., 1/4-20 x 1/2 HHMS
3	87014	Washer, #8 Int Star	22	57040	Nut, 1/2 NPT Conduit	41	57047	Nut, 1/4-20 Lock
4	70052	Scr., 8-32 x 3/8 PHMS	23	36052	Guard, EPB Thread	42	14278	Bracket, Cable Roller
5	62135	Plate Assembly, Motor	24	73202	Spacer, EPB Brush	43	84034	Roller
6	87018	Washer, #10 x 9/16 OD	25	09022	Bearing, EPB	44	73206	Spacer, .259 ID x 3/8 OD x 1/2
7	57104	Nut, 10-32 w/Star Washer	26	03032	Axle, EPB Brush	45	70018	Scr., 1/4-20 x 1 HHMS
8	84046	Pulley, EPB Motor 3/8 Shaft	27	12001	Brush, EPB	46	62130	Plate, Pump
9	70084	Set Scr., 8-32 x 3/16 KCP	28	70177	Scr., 10-32 x 1/2 FHMS	47	73208	Spacer, 3/4 OD x .208 W Nylon
10	11017	Belt, EPB	29	64032	Pulley, EPB Brush	48	57113	Nut, 5/16-18 Lock
11	70043	Scr., 10-32 x 5/8 FHMS	30	70218	Shoulder Bolt, 3/8 OD x 1/2 L	49	73210	Spring, Pedal Release
12	41106	Housing, EPB Brush	31	67029	Rectifier, Bridge	50	70217	Shoulder Bolt, 3/8 OD x 1.25 L
13	57030	Nut, 10-32 Lock	32	70066	Scr., 10-32 x 3/4 PHMS	51	73219	Spacer, .57 OD x 3/4 L Nylon
14	54083	Manifold, EPB	33	87015	Washer, #10 Star	52	66076	Pedal Assembly, Left
15	70162	Scr., 10-32 x 3/8 PHMS	34	70088	Scr., 10-32 x 1/2 PHMS	53	57005	Nut, 10-24 Hex
16	87016	Bracket, Brush Housing Lift	35	14280	Bracket, Brush Housing Lift	54	70223	Eyebolt, 3/16 w/10-24 Nut
17	27074	Cap, Nozzle	36	73220	Spacer, EPB Cable	55	66078	Pedal, Right
18	44047	Jet, 8003 Tee Brass	37	27265	Cable Assembly, EPB Lift	56	14276	Bracket Assembly, EPB Pedal
						57	70218	Shoulder Bolt, 3/8 OD x 3/4 L
						58	14277	Bracket, Right Hanger
						59	57092	Nut, 5/16-18 Lock
						60	14276	Bracket, Left Hanger
						61	14294	Bushing, 3/4 ID Snap
						62	20056	Clip, Wire Self Adhesive
						63A	14295	Breaker, 1.5A Circuit
						63B	14308	Breaker, 0.8 Thermal Circuit
						64	57116	Nut, 8-32 w/Star Washer
						65	14020	Terminal Block (3-4-3)
						66	50267	Label, Raise/Lower Brush
						67	70210	Scr., 8-32 x 3/4 PHMS Blk Nylon
						68	57024	Nut, 3/8-27 Panel
						69	57106	Nut, 8-32 w/Star Washer
						70	20035	Clamp, 7/16 Plastic Cable
						71	70012	Scr., 8-32 x 1/2 RHMS
						72	34128	Frame, EPB Main
						73	73168	Strain Relief, LIQ TITE
						74	88235	Wire Assembly, EPB Motor Housing

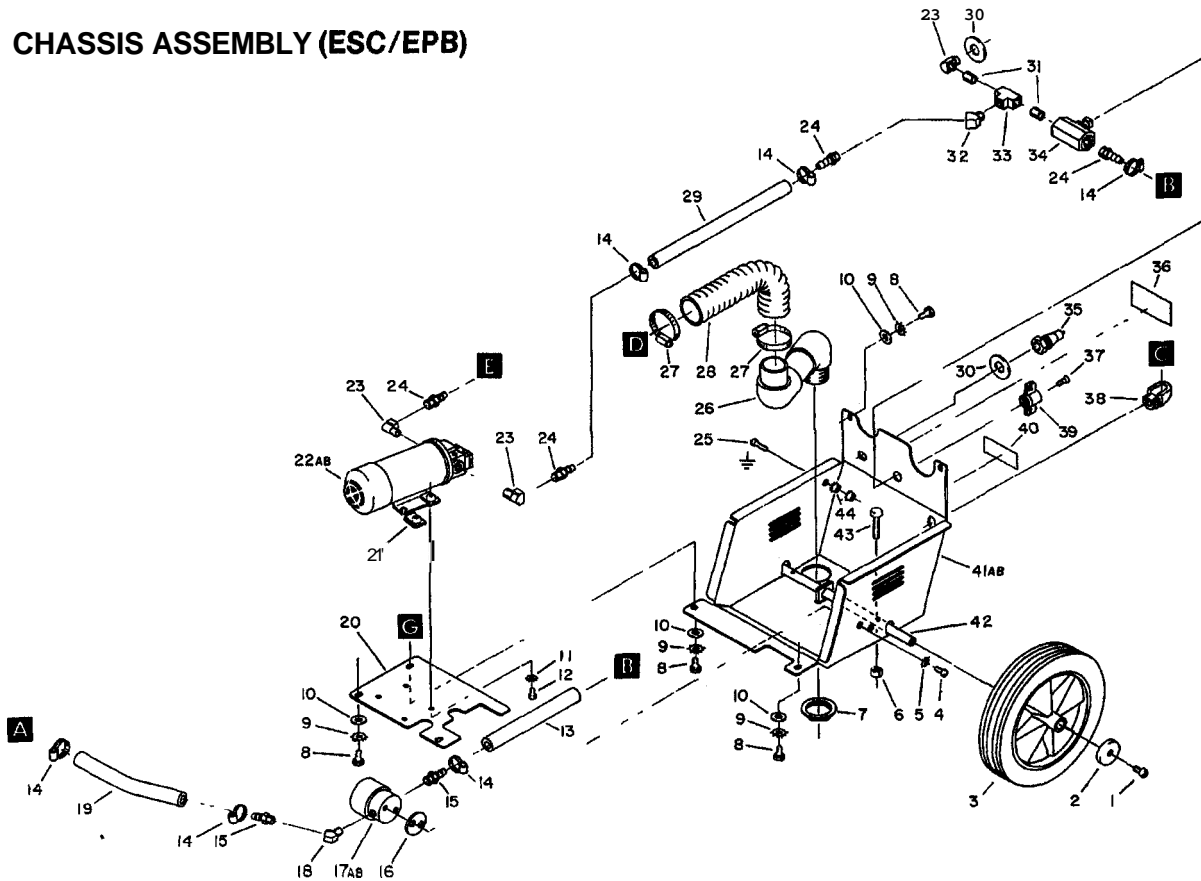
ESC/EPB TANKS		
KEY	PART NO	DESCRIPTION
1	73250	Strainer, 80 Mesh x 3/8 FPT
2	14076	Bushing, 3/8 MPT x 1/4 FPT Hex
3	87010	Washer, 9/16 x 1.25 OD x .06 T
4	58014	Nipple, 1/4 Close
5	75082	Tank ESC/EPB Solution
6	36055	Grommet, 1/2 ID x 1/4 Groove
7A	50236	Label, ESC Main
7B	50269	Label, EPB Main
8	31016	Elbow, 1/4 NPT Street
9	40015	Hosebarb, 1/4 FPT x 3/8
10	20042	Clamp, 3/8 Hose (D-Slot)
11	39243	Hose, 3/8 Rubber x 13.5
12A	14258	Brush Set, 115V
12B	14267	Brush Set, 230V
13	70191	Scr., 10-32 x 1/2 HHST
14	87016	Washer, #10 Star
15A	70062	Scr., 1/4-20 x 4 HHMS (115V)
15B	70250	Scr., 1/4-20 x 3.5 HHMS (230V)
16	87013	Washer, 1/4 ID x 5/8 OD
17	88220	Wire, 12" Ground
18A	53130	Motor, 115V 5 7/8 3-Stage Vac
18B	53135	Motor, 230V 5 7/8 2-Stage Vac
19A	73194	Spacer, Vac Mounting (115V)
19B	73203	Spacer, Vac Mounting (230V)
20	35011	Gasket, Vac Motor Top
21	57038	Nut, 1.5 NPT Flange
22	57105	Nut, 1/4 w/Star Washer
23	70018	Scr., 1/4-20 x 1 HHMS
24	70020	Scr., 1/4-20 x 1/2 HHMS
25A	14264	Bracket, Vac Motor (115V)
25B	14273	Bracket, Vac Motor (230V)
26	99807	Cord, 1/8" (2' Required)
27	51045	Lid, Solution Tank
28	39244	Hose, Drain x 14.5
29	20002	Clamp, 2" Nylon Ratchet
30	40001R	Hosebarb, 1.5 MPT x 1.5
31	75083	Tank, ESC/EPB Recovery
32	78118	Tube Assembly, Vac Stack
33	14289	Bushing, 2 5/8 White Snap
34	34140	Filter, Vac Intake 10 Mesh
35	28029	Dome Assembly
36	35060	Gasket, S/C Dome
37	27274	Cuff, 1.5 Swivel Hose
38	39072	Hose Asm., 1.5 x 4' Vac Swivel
39	27167	Hose Cuff, 1.5
40	31046	Elbow, 1/2 NPT Bk Street
41	73189	Spacer, Elbow Blk
42	70085	Scr., 1/4-20 x 1/2 PHMS
43	72033	Switch, Momentary On/Off
44	72004	Switch, Illuminated Rocker
45A	50236	Label, ESC Control Panel
45B	50271	Label, EPB Switch Panel
46A	61045	Panel, ESC Switch Control
46B	61061	Panel, EPB Switch
47	72035	Switch, Curvate Lite Rocker
48	57040	Nut, 1/2 NPT Conduit
49A	23102	Cord Asm., ESC Control Panel/Base
49B	88236	Wire Assembly, EPB 16/8
50	73197	Strain Relief, 90 Degree
51	04081	Adapter, Strain Relief
52	73169	Strain Relief, Cord Hook
53	20055	Clamp, 9/16 Dia. x 9/32 Hole
54	70126	Scr., 1/4-20 x 7/16 PHMS Nylon
55	73200	Strain Relief, 1/2 NPT Flex
56A	23101	Cord Assembly, 115V Pigtails
56B	23113	Cord Assembly, 230V Pigtails
57A	26009	Cord End, 115V 15A Fem. T-Lock
57B	28012	Cord End, 230V 15A Fem. T-Lock
58A	23086	Cord Assembly, 115V 14/3 x 50'
58B	23096	Cord Assembly, 230V 14/3 x 50'
59	28006	Cord End, 125V 15A 3-Wire
60A	50244	Label, ESC Wiring Diagram
60B	50272	Label, EPB Wiring Diagram
61	20035	Clamp, 7/16 Plastic Cable
62	27079	Cuff, 1.5" White Hose
63	38230	Hose Assembly, Dome Vac Mtr
64	20084	Clamp, 2.0 Worm Gear x 312 W
65	27074	Cap, Nozzle
66	44013	Jet, 9503 T
67	54075	Manifold, ESC
68	85006	Vac Shoe Assembly
69	70213	Scr., 10-32 x 7/16 PHMS
70	67087	Retainer, ESG14 Rear
71	14282	Sq. Blade, ESG14 Rear Backup
72	14283	Sq. Blade, ESG14 Rear
73	73213	Shoe, ESG14 Squeegee
74	14281	Sq. Blade, ESG14 Front
75	14280	Sq. Blade, ESG14 Front Backup
76	67088	Retainer, ESG14 Front
77	87018	Washer, #10 x 9/16 OD
78	48023	Knob Assembly, ESG14
79	87025	Washer 1/4 Star

TANK ASSEMBLY (ESC/EPB)



ESG-14 Squeegee Assembly (Optional)

CHASSIS ASSEMBLY (ESC/EPB)



ESWEPB CHASSIS

KEY	PART NO.	DESCRIPTION	KEY	PART NO.	DESCRIPTION
1	70085	Scr., 1/4-20 x 1/2 PHMS	23	31016	Elbow, 1/4 NPT Street
2	27266	Cap, Wheel Hub	24	40014	Hosebarb, 1/4 MPT x 3/8
3	89044	Wheel, Grey 10" x 1 75 W	25	70066	Scr., 10-32 x 3/4 PHMS
4	70162	Scr., 10-32 x 3/8 PHMS	26	54077	Muffler, Vac Exhaust
5	87016	Washer, #10 Star	27	20064	Clamp, 2 D Worm Gear x 312 W
6	57047	Nut, 1/4-20 Lock	28	39247	Hose, Vac Exhaust x 19"
7	57039	Nut, 1 5 NPT Flange	29	39032	Hose, 3/8 Rubber x 15"
8	70020	Scr., 1/4-20 x 1/2 HHMS	30	87015	Washer, 9/16 ID x 1 06 OD
9	87025	Washer, 1/4 Star	31	56014	Nipple, 1/4 Close
10	87013	Washer, 1/4 ID x 5/8 OD	32	31021	Elbow, 1/4 NPT 45 D Street
11	87016	Washer, #10 Star	33	78156	Tee, 1/4 FPT
12	70088	Scr., 10-32 x 1/2 PHMS	34	84085	Valve, 1/4 FPT Ball
13	39250	Hose, 3/8 Rubber x 12"	35	56012	Nipple, 1/4 FPT QD
14	20042	Clamp, 3/8 Hose (D-Slot)	36	50198	Label, Warning & Caution
15	40029	Hosebarb, 1/8 MPT x 3/8	37	70091	Scr., 10-24 x 1/2 FHMS
16	73239	Spacer, Valve	38	73197	Strain Relief, 90 D
17A	84050	Valve, 115V Solenoid Shut-Off	39	48028	Knob, Yellow Ball Valve
17B	84051	Valve, 230V Solenoid Shut-Off	40	50232	Label, Valve Position
18	31028	Elbow, 1/8 NPT 45 D Street	41A	34114	Frame, ESC Main
19	39049	Hose, 3/8 Rubber x 11"	41B	34128	Frame, EPB Main
20	62130	Plate, Pump	42	03030	Axle, Wheel
21	57081	Nut, 10-32 Captive J	43	70297	Scr., 1/4-20 x 1 50 Full Thd HHMS
22A	65067	Pump, 115V 100 PSI By-Pass	44	57104	Nut, 10-32 w/Star Washer
22B	65070	Pump, 230V 100 PSI By-Pass			

WINDSOR LIMITED WARRANTY

WINDSOR warrants to the original purchaser/user that this product is free from defects in workmanship and materials under normal use and service for a period of one year from date of purchase. WINDSOR will at its option, repair or replace without charge, except for transportation costs, parts that fail under normal use and service when operated and maintained in accordance with the applicable operation and instruction manuals. This warranty does not apply to normal wear, or to items whose life is dependent on their use and care, such as cords, switches, hoses, rubber parts, electric motor parts, etc.

This limited warranty is in lieu of all other warranties, expressed or implied and releases WINDSOR from all other obligations and liabilities. It is applicable only in the U.S.A. and Canada, and is extended only to the original user/purchaser of this product. WINDSOR is not responsible for costs for repairs performed by persons other than those specifically authorized by WINDSOR. This warranty does not apply to damage from transportation, alterations by unauthorized persons, misuse or abuse of the equipment, use of noncompatible chemicals, or damage to property, or loss of income due to malfunctioning of the product.

If a dif develops i this machine,
you st contact e
m: was purchased e ler from



WINDSOR INDUSTRIES, INC., 1351 W. Stanford Ave., Englewood, CO 80110 USA • 303/782-1800 • FAX 303/782-0817