

# INSTRUCTIONS FOR KIT #: K-281179 & K-281180 DECK LIFT ASSEMBLY UPGRADE

**AFFECTS MODEL NUMBERS:**

SCV2832E (K-281179)

SCV2832 (K-281180)

# Purpose



## Background

- This KIT is provided to upgrade the SCV 2832 Scrubber Deck Lift Assembly.

## Improvement(s)

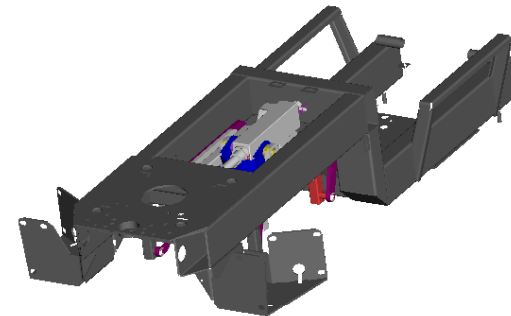
- Several features have been incorporated that will provide enhanced operation and greater durability.

# Contents



## This KIT contains:

Item	Part #	Total Quantity
Actuator	740819-1	1
Actuator Crank Assy.	281161	1
Lower Link – LH	281175	1
Lower Link - RH	281176	1
Shaft –Link Attachment	281174	1
Link Assy.	281171	2
Lift Weldment	241468	1
Lift Weldment	241470	1
Clamp – hose, worm drive	829129	1
TRIO Controller (SCV2832 K-281180)	748004R*	1
TRIO Controller (SCV2832E K-281179)	748174R*	1
wave washer, ½" ID	711524	10
wave washer, ¾" ID	711583	4
flat washer, ½" ID, ss	712310	10
flat washer, .41" ID, ss	712767	1
flat washer, .41" ID, zinc pl	711515	3
flat washer, ¾" ID	711588	6
retaining ring, ½"	711713	10
retaining ring, ¾"	809148	6
clevis pin, 3/8 x 1.75	712124	1
clevis pin, 3/8 x 2.25	711678	1
cotter pin, .12 x 1.00	711809	2
Instruction Manual	999470	1



999470  
REV A 12/09 JN, BW, LG

\*See return instructions provided on the last page for Credit of Core Charge

# Instructions



## Removal of Original Assembly;

- 1) Lower the Scrub Deck to the floor, using the deck service switch (inside the Electrical Box).
- 2) Disconnect the Battery Main Power Connector.
- 3) Remove Scrub Deck Assembly;
  - a) Detach the solution hose at the Scrub Deck. A new "worm drive" Hose Clamp is provided in the kit, for reattaching the hose.
  - b) Detach the electrical connector for the Scrub Deck.
  - c) Remove the four bolts that attach the Deck to the Deck Lift Assembly, and slide unit out and away from machine.
- 4) Detach all Deck Lift Assembly components. Some parts will be reused, review the Instruction Manual drawings for notes regarding these parts. See Drawing 2 for a view of the Deck Lift Assembly with the Scrub Deck removed.

The preferred method for removal of the Deck Lift components follows;

- a) Support the Deck Lift Linkage.
- b) Detach the Upper Links and Lower Links from the Main Frame Pins, see Drawing 2 for pin locations. Four Retaining Rings and associated fasteners need to be removed.
- c) Disconnect the Electrical Power Connector for the Actuator.
- d) Remove the fasteners for the rear attachment of the Actuator. Carefully lower the Actuator.
- e) Detach the Actuator Attachment Weldment (Item 11), this requires the removal of four bolts. The Deck Lift Assembly is now fully detached and needs to be carefully removed from under the machine.

# Instructions



- 5) Review the original assembly, and note the locations of all fasteners. The assembly can now be disassembled completely, as some parts will be reused in the new assembly.
- 6) Remove the original\* TRIO Electrical Controller, which is located inside the Electrical Box. Note the location for all connections. A replacement TRIO Controller is provided.

MODEL	KIT	TRIO
SCV2832E	K-281179	748174
SCV2832	K-281180	748004

- 7) Modify the Spray Bar on the Scrub Deck (**Cylindrical Decks ONLY**) per Drawing 7.
- 8) Assemble the new Deck Lift Assembly, using the drawings provided in this manual. Lubricating grease should be used at the pivot locations if desired. The new Sub Assembly should appear similar to that shown on Drawing 6. Use a Cotter Pin (Item 23) for the front Actuator attachment, as shown on Drawing 4.

## Installation of New Assembly;

- 1) Position the New Assembly under machine. Install the new components in a reverse order of disassembly. New fasteners are provided in three Small Parts Bags, as noted on the drawings. Use a Cotter Pin (Item 23) for the rear Actuator attachment, as shown on Drawing 4.

\*See return instructions provided on the last page for Credit of Core Charge

# Instructions



## Bill of Material for Drawings:

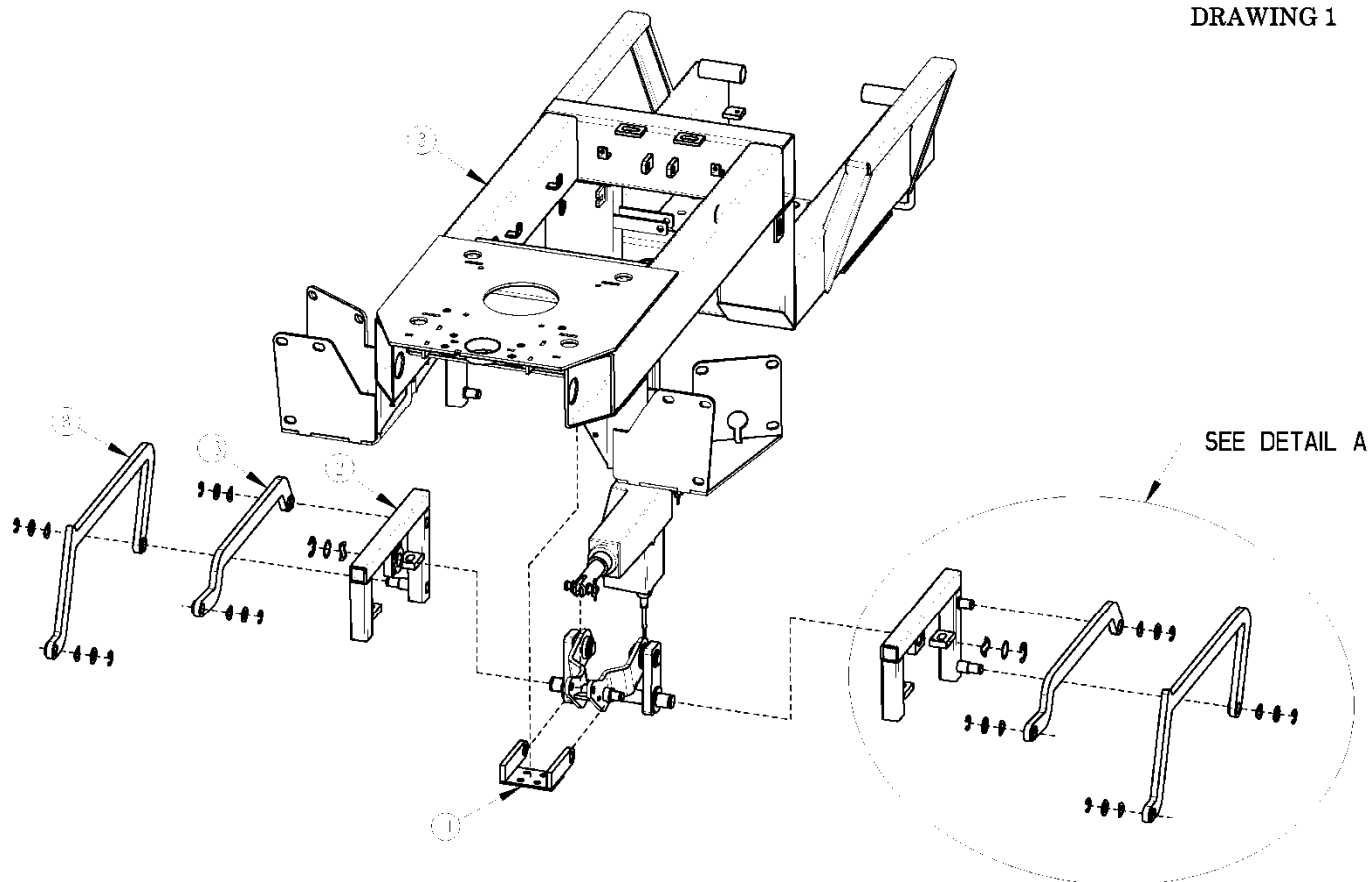
Item #	Part #	Quantity	Description
1	241468	1	Lift Weldment – w/ Bushing, LH
2	241470	1	Lift Weldment – w/ Bushing, RH
3	281101	1	Mainframe Weldment
4	281161	1	Actuator Crank Assembly
5	281171	2	Actuator Lift Link
6	281174	1	Shaft - Link Attachment
7	281175	1	Lower Link – LH
8	281176	1	Lower Link – RH
9	281458	2	Shaft – Link Attachment
10	281459	1	Shaft - Crank Pivot
11	281471	1	Actuator Attachment Weldment
12	281477	1	Upper Link – LH
13	281478	1	Upper Link – RH
14	711228	1	Bolt – HH, 5/16 x .75
15	711515	3	Washer – flat, .41 ID, zinc pl
16	711524	10	Washer – wave, .52 ID
17	711545	1	Washer – helical, 5/16" ID
18	711575	1	Washer – flat, .31 ID
19	711583	4	Washer – wave, .78 ID
20	711588	6	Washer - flat, .75 ID
21	711678	1	Clevis Pin – 3/8 x 2.25"
22	711713	10	Retaining Ring – 1/2"
23	711809	2	Cotter Pin – 1/8 x 1.00"
24	712124	1	Clevis Pin – 3/8 x 1.75"
25	712310	10	Washer – flat, .52 ID
26	712767	1	Washer – flat, .406 ID, stainless st
27	809148	6	Retaining Ring – 3/4"
28	740819-1	1	Actuator – linear, 24v

999470  
REV A 12/09 JN, BW, LG

# Instructions

**Minuteman**<sup>®</sup>  
Excellence Meets Clean

DRAWING 1

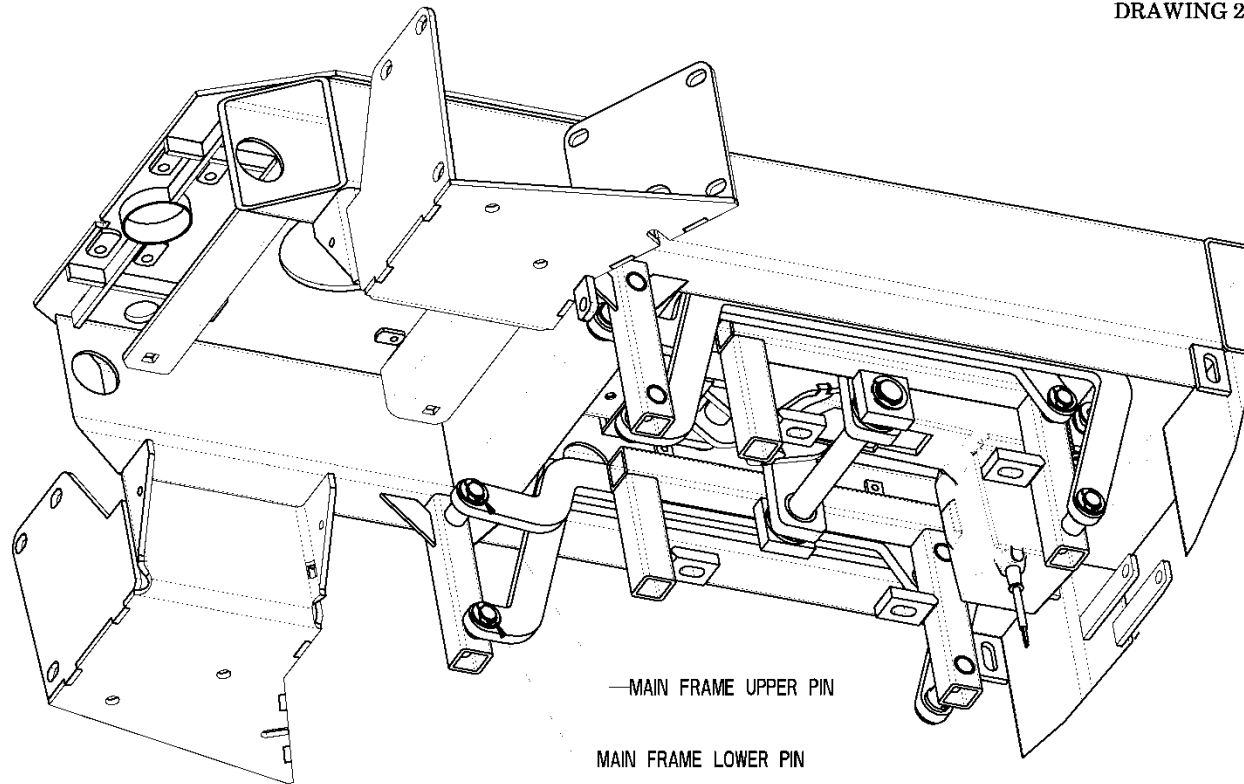


999470  
REV A 12/09 JN, BW, LG

# Instructions

**Minuteman**<sup>®</sup>  
Excellence Meets Clean

DRAWING 2

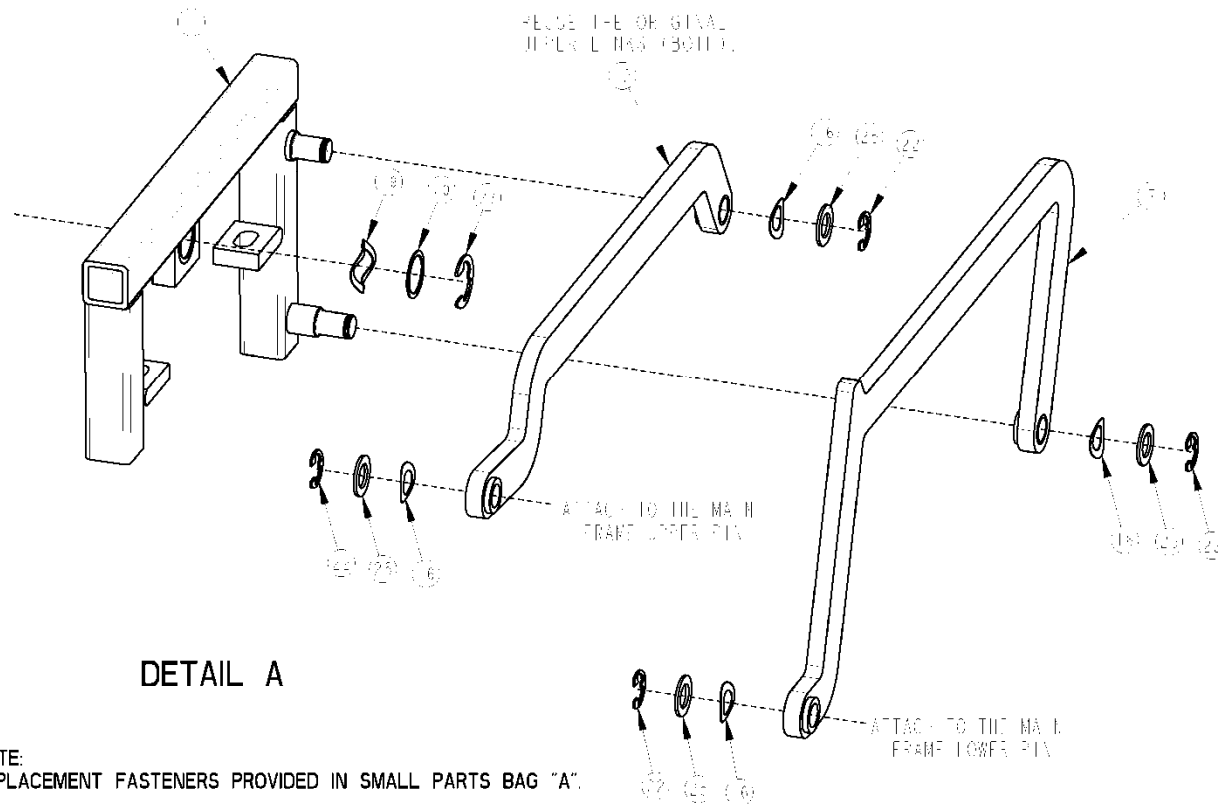




# Instructions

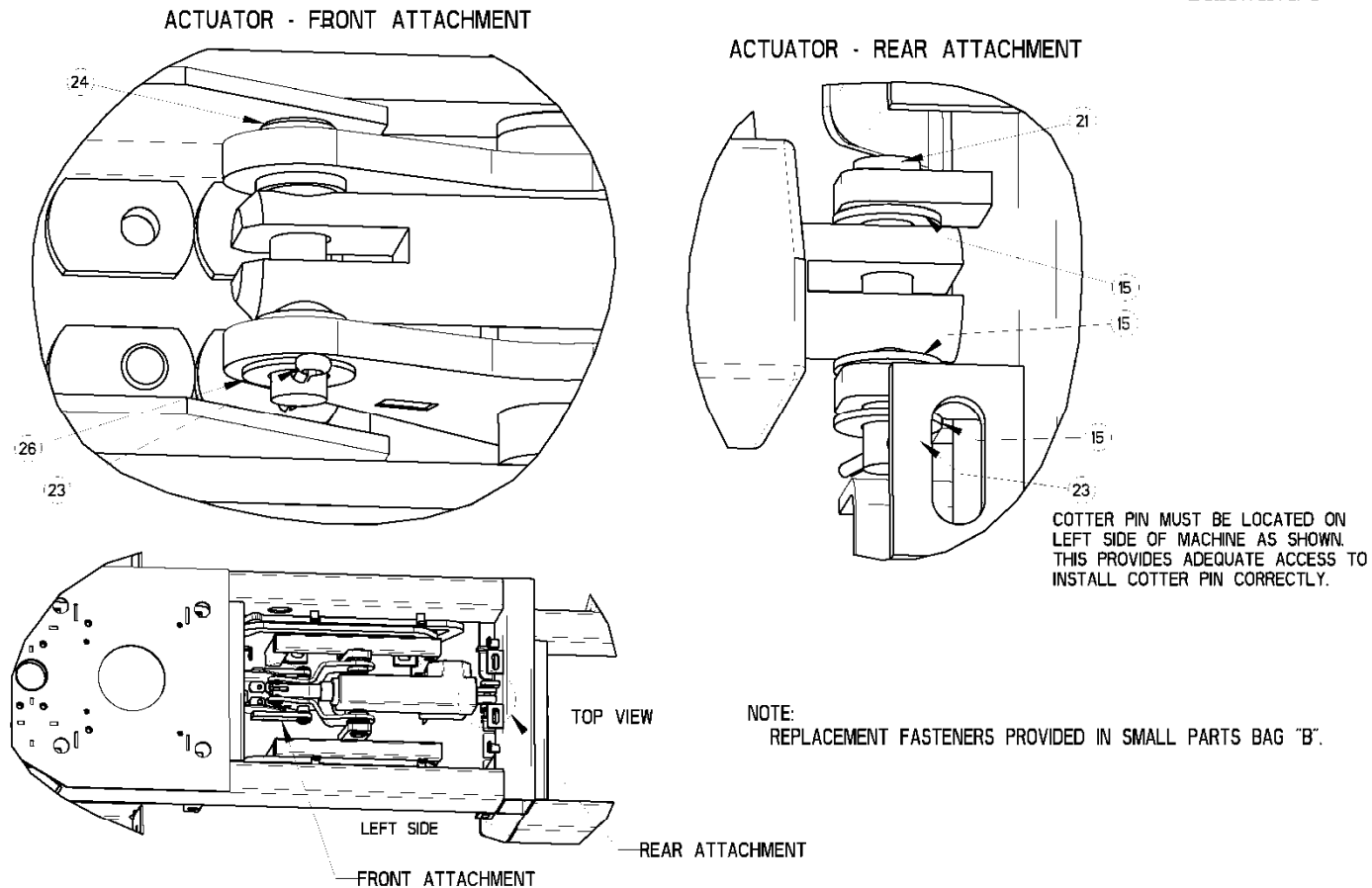


DRAWING 3



# Instructions

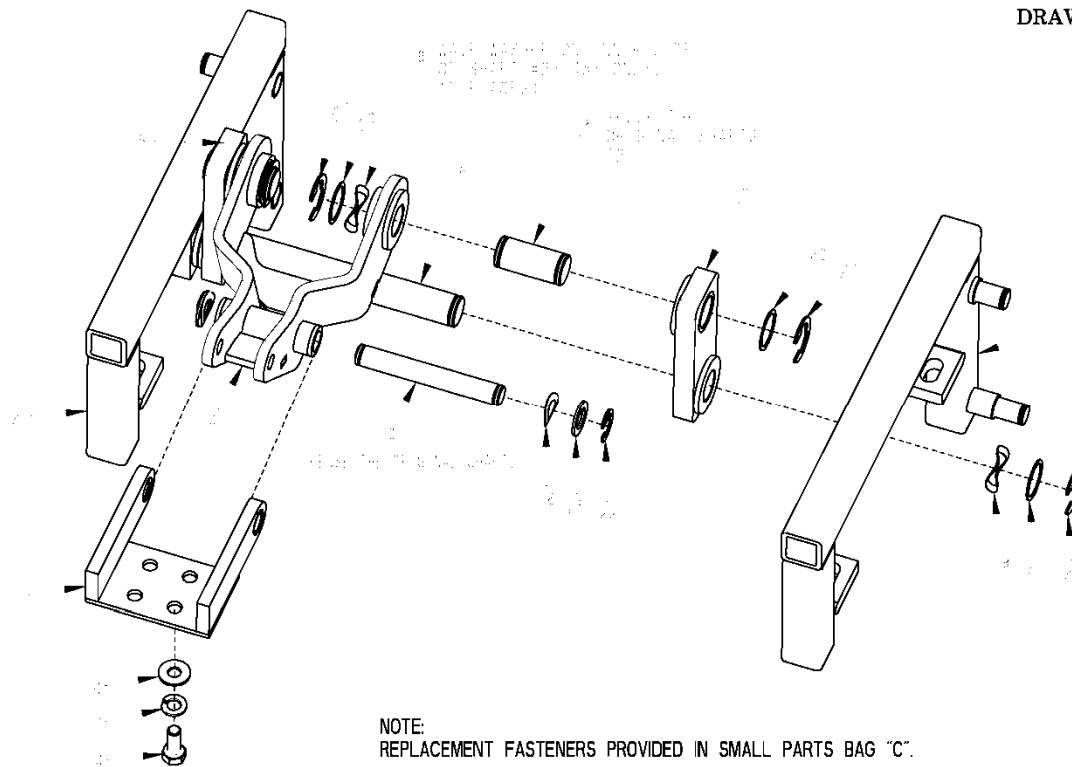
DRAWING 4



# Instructions

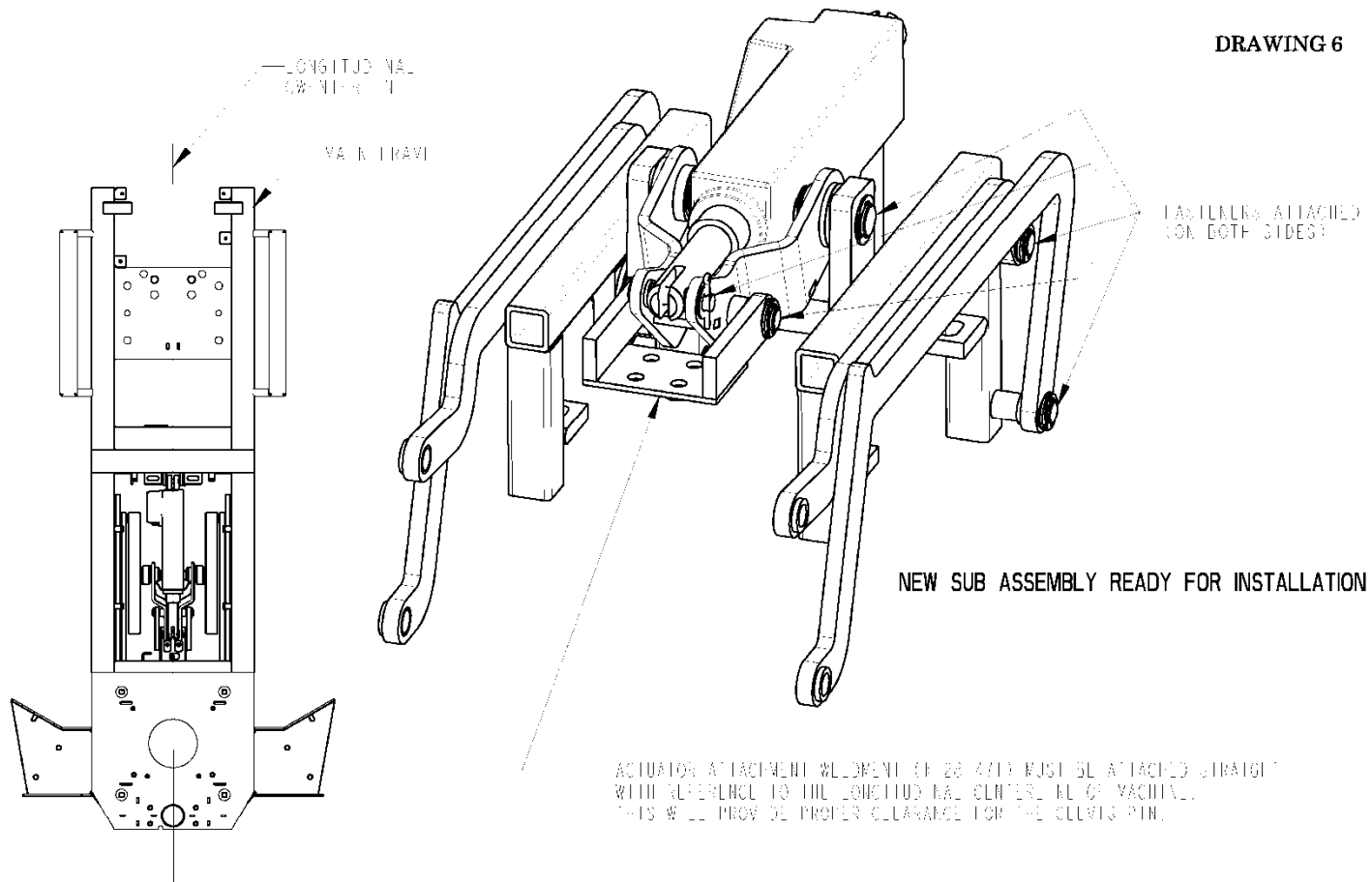
**Minuteman**<sup>®</sup>  
Excellence Meets Clean

DRAWING 5



NOTE:  
REPLACEMENT FASTENERS PROVIDED IN SMALL PARTS BAG "C".

# Instructions



# Instructions

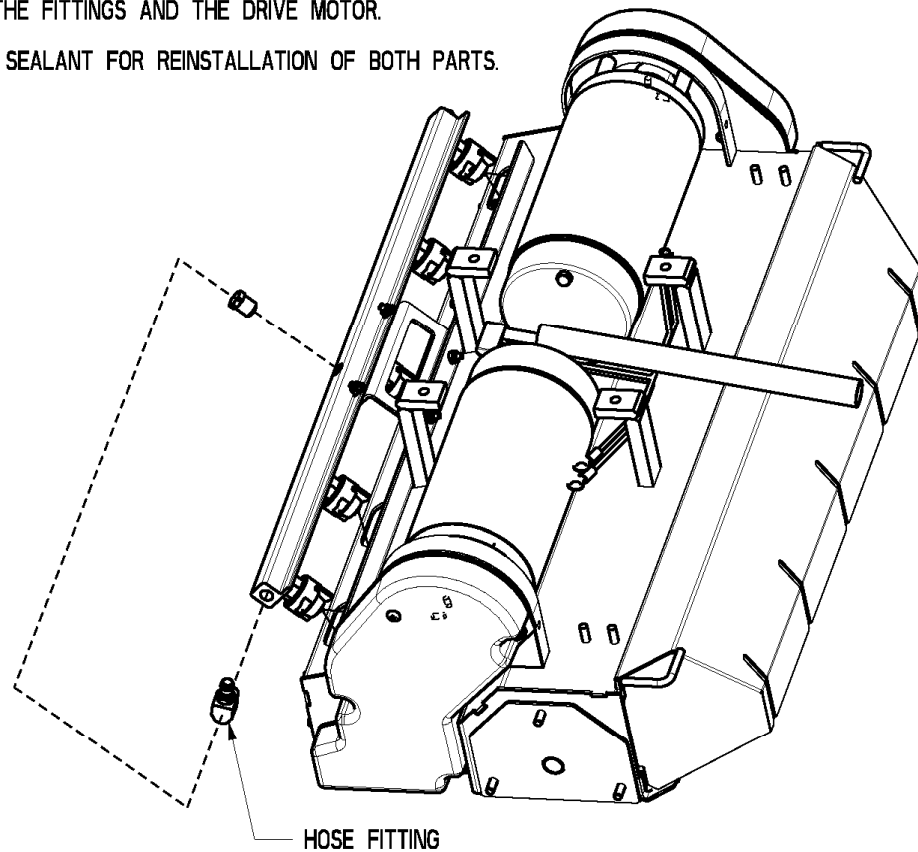


THIS MODIFICATION IS REQUIRED ON CYLINDRICAL SCRUB DECKS ONLY;

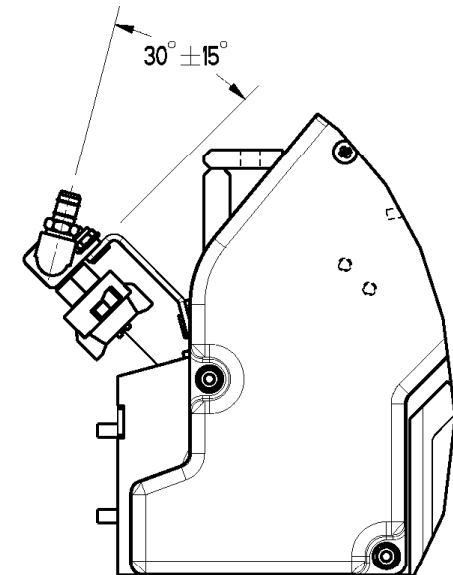
THE BARBED HOSE FITTING AND THE CENTER PLUG NEED TO BE SWAPPED IN THE SPRAY BAR SUB ASSEMBLY. THIS WILL PROVIDE SATISFACTORY CLEARANCE FOR THE FITTINGS AND THE DRIVE MOTOR.

USE PIPE THREAD SEALANT FOR REINSTALLATION OF BOTH PARTS.

DRAWING 7



HOSE BARB ORIENTATED WITHIN THIS RANGE.



# Instructions



## Lowering the Brush in Service Mode

All Versions Of SCV2832E and SC280000

**If the brush deck is stuck in the up position and is giving an error code, do the following:**

Note: This procedure will work in most situations

1. **Locate the electronic controller behind the panel below the seat.**
2. **Disconnect the P2 connector from the controller (See fig. 1).**
3. **Turn the machine on.**
4. **On model SC2800000, to put the machine into Service Mode. Hold one of the brush pressure buttons on the touch pad for 20 seconds and release. (See fig 2) .**  
**On model SC2832E, to put the machine into service mode. Press and hold the lower part of the rocker on the service mode switch for about 15 seconds and release (See fig 3). The switch is located in the controller compartment under the seat, on the operators left side.**
5. **Plug the P2 connector into the controller again.**
6. **Press the service mode switch/button again to lower the deck to the floor.**

**For the SC2800000: Press the brush pressure down button until the deck lowers to the floor.**

**For the E2832E, Press the lower part of the rocker on the service mode switch until the deck lowers to the floor.**

# Instructions

## Entering Service Mode with a Stuck Actuator

### To enter service mode with a stuck actuator:

- With the machine off, unplug the **P2 connector**.
- Turn it on and press and hold the service switch up to 30 seconds.
- Plug the **P2 connector** back in. ( Leave machine on)
- Press the service mode switch to raise and lower the brush deck.

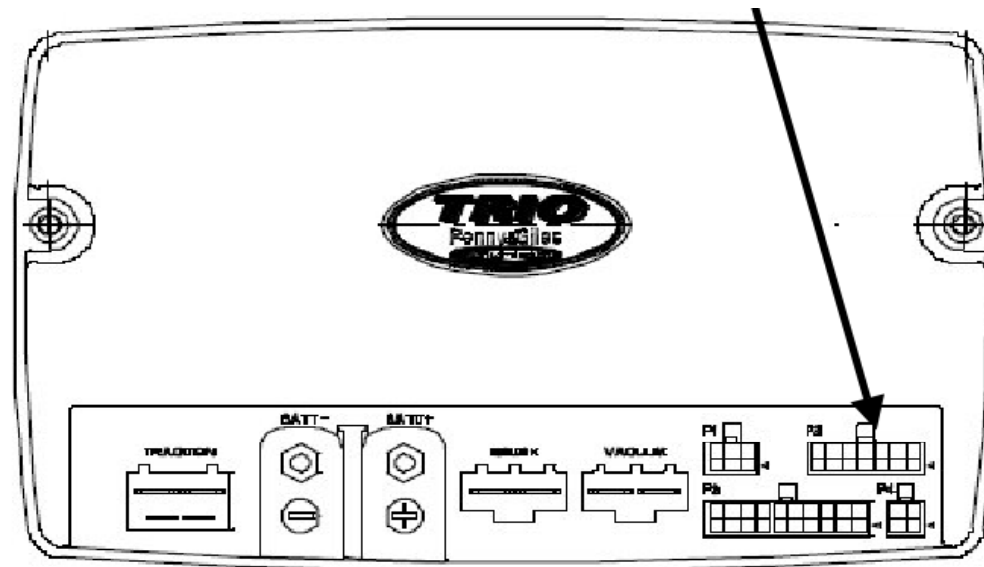


Fig 1

# Instructions



## Service Mode SC280000

Push and hold the brush pressure down button for 20 seconds.

Once it is in service mode, You can raise and lower the deck by pressing the brush pressure up and down arrows.

To return the machine back to normal operation:  
Turn the key switch off and back on. The machine will reset.





# Instructions



## Service Mode

The Service mode switch can be used to lower the brush deck. Press and hold the switch in the down position and the deck will lower. Once it is in service mode, the deck can be raised and lowered by pressing the top or lower part of the rocker switch. To return the machine back to normal operation:  
Turn the key switch off and back on.  
The machine will reset.

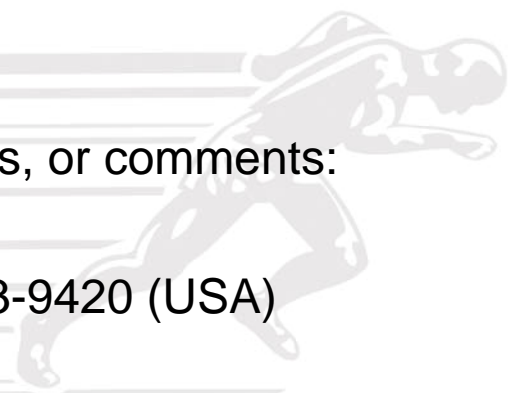


**Fig 3**

The switch located below the seat behind the panel on the SCVs. (Not equipped on the SC280000 models)

# Notes





For further assistance, questions, or comments:  
please contact  
Technical Support at 800-323-9420 (USA)

# Instructions



Return the Original Trio for Core Charge Credit of \$100

- 1) Contact Minuteman Customer Service at 800-323-9420 to get Return Authorization Number.
- 2) Fill in the form below
- 3) Ship Original TRIO Controller with this form to Minuteman.

Note: Core charge credit only applies to non-warranty replacements

Return Authorization # (Provided by Minuteman)	
Serial #	
Dealer Name:	
Date Replaced:	
Kit #	

For warranty replacements: File a warranty claim on-line at [www.minutemanintl.com](http://www.minutemanintl.com) in the dealers area. Use the on-line claim number provided on this form. Return the parts with this form filled out.