

SME

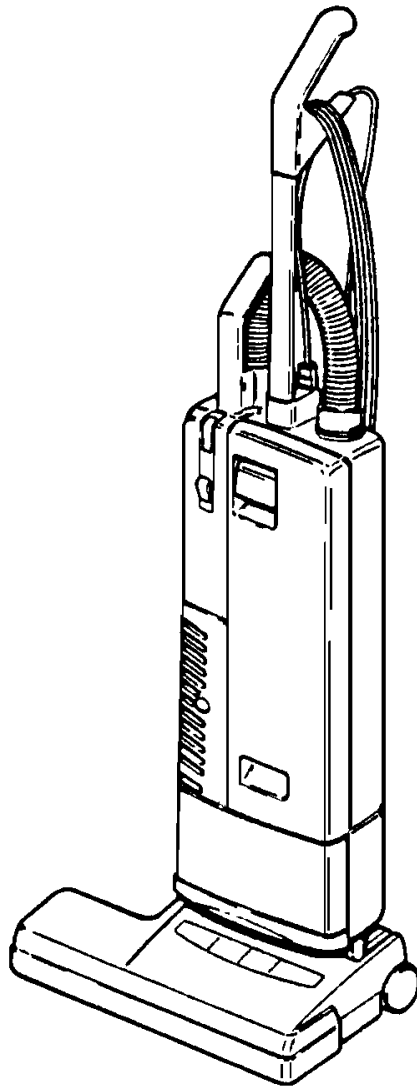
Power Plus

Commercial Upright Vacuum



LISTED

Operation & Parts Manual



86306360-D
11/28/11

MODELS: SMP14
10120180
SMP18
10120190

TABLE OF CONTENTS

	Page No.
Important Safety Instructions.....	2
Assembly.....	4
General Information.....	5
Specifications.....	5
Recommended Spare Parts.....	5
Operating Instructions.....	6
Periodic Maintenance.....	7
Troubleshooting.....	8
Repair Or Replace.....	8
Wiring Diagram.....	10
Parts Diagram/Parts List.....	11 - 16
Warranty.....	17

IMPORTANT SAFETY INSTRUCTIONS

Accidents due to misuse can only be prevented by those using the machine. To guard against injury, basic safety precautions should be observed, including the following:

Read and follow all safety instructions.

This vacuum cleaner is designed to be safe when used to perform cleaning functions. Should damage occur to electrical or mechanical parts, cleaner should be repaired by ServiceMaster or competent service station before using in order to avoid further damage to machine or physical injury to user.

⚠ WARNING: To reduce the risk of fire, electric shock, or injury:

Use **only** as described in this manual. Use only manufacturer's recommended attachments.

Do not use with damaged cord or plug. If the machine is **not working properly**, has been dropped, damaged, left outdoors, or dropped into water, return it to an authorized service center.

Do not put any object into openings. **Do not** use the machine with any openings blocked. Keep openings free of dust, lint, hair and anything that may reduce airflow.

Do not use to pick up flammable or combustible liquids, such as gasoline, or use in areas where they may be present.

Do not use outdoors or on wet surfaces.

Do not unplug machine by pulling on cord. To unplug, grasp the plug, not the cord. Pulling it out by the cord itself can damage cord insulation and internal connections to plug.

Do not pull or carry by cord, use cord as a handle, close a door on cord, or pull cord around sharp edges or corners.

Do not pull/run cleaner over cord. **Keep** cord away from heated surfaces.

Connect to a **properly** grounded outlet. See Grounding Instructions.

Do not operate without dust bag and filter in place.

Turn off all controls before unplugging.

Wind cord no tighter than is necessary to retain it on the cord hooks.

Your vacuum cleaner creates suction and contains a revolving brush. To avoid bodily injury from suction or moving parts, vacuum cleaner brush should not be placed against, or in close proximity of loose clothing, jewelry, hair or body surfaces while cleaner is connected to electrical outlet. Cleaner should not be used to vacuum clothing while it is being worn.

Always plug your cleaner into a standard wall outlet. Use of extension cord or light socket with inadequate current-carrying capacity could result in electric shock or fire hazard.

Disconnect cleaner from electrical outlet before servicing, such as changing bags or belts. You could receive bodily injury from moving parts of machine should switch accidentally be turned on. Disconnect cleaner from electrical outlet before detaching powerhead.

Do not use your vacuum cleaner in areas where flammable and/or explosive vapor or dust is present to avoid possibility of fire or explosion. Some cleaning fluids can produce such vapors. Areas on which cleaning fluids have been used should be completely dry and thoroughly aired before being vacuumed.

SAVE THESE INSTRUCTIONS

SAFETY INSTRUCTIONS CONT'D.

To avoid fire hazard, do not pick up matches, fireplace ashes, or smoking material with cleaner.

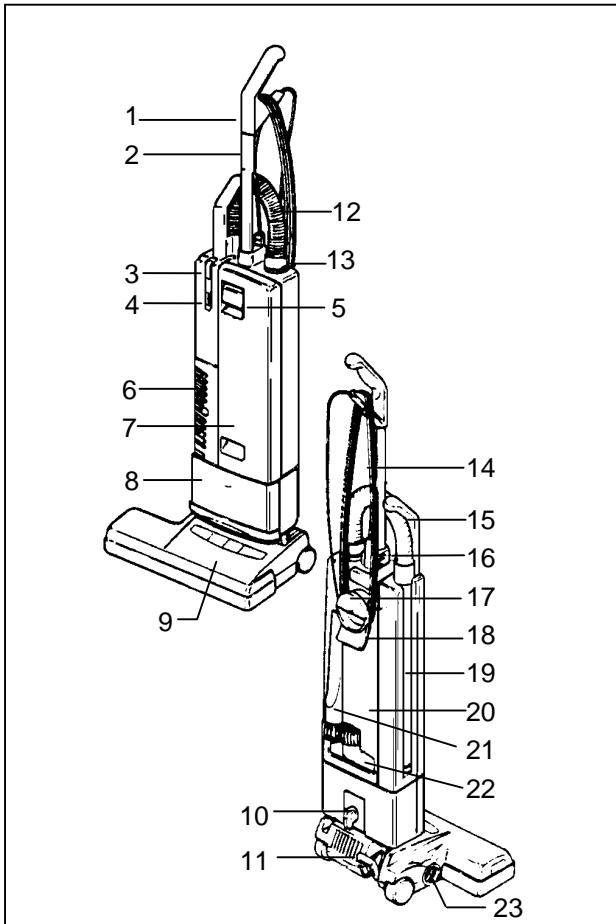
Keep your work area well lighted to avoid picking up harmful materials (such as liquids, sharp objects, or burning substances) and avoid tripping accidents.

Use care when operating the cleaner on irregular surfaces such as stairs. A falling cleaner could cause bodily injury and/or mechanical damage. A handle is provided near the bottom of the dust bag door to assist operating the cleaner on stairs. The handle is not intended to support the complete cleaner weight and should not be used to carry the cleaner. Proper storage of machines in an out-of-way area immediately after use will also prevent accidents caused by tripping over cleaner.

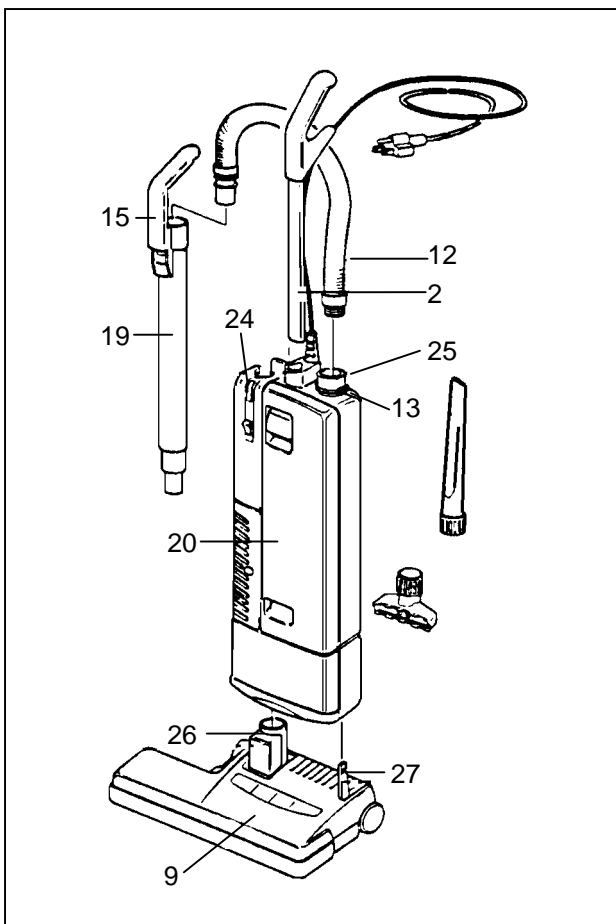
Store your vacuum cleaners indoors in a cool, dry area not exposed to the weather to avoid electrical shock and/or cleaner damage.

Exercise strict supervision to prevent bodily injury when using vacuum cleaner near children or when child is allowed to operate vacuum cleaner. Do not allow children to play with vacuum cleaner and never leave cleaner plugged in and unattended.

SAVE THESE INSTRUCTIONS



REF	DESCRIPTION
1	HANDLE GRIP
2	HANDLE ASSEMBLY
3	BAG FULL INDICATOR
4	ON/OFF SWITCH
5	COVER RELEASE LATCH
6	EXHAUST FILTER COVER
7	FRONT COVER
8	MOTOR COVER
9	POWER HEAD
10	LOCKING CATCH
11	FOOT PEDAL
12	HOSE
13	RETAINING RING
14	CABLE
15	ATTACHMENT TUBE HANDLE
16	HANDLE CATCH
17	CARRYING HANDLE
18	CABLE HOOK
19	ATTACHMENT TUBE
20	DUST BAG HOUSING
21	CREVICE NOZZLE
22	UPHOLSTERY NOZZLE
23	PILE ADJUSTMENT KNOB
24	ATTACHMENT HANDLE PROJECTION
25	CONNECTING TUBE
26	SWIVEL NECK
27	SUPPORT LEVER



Assembling the vacuum cleaner

Put the power head (9) on the floor with the swivel neck (26) and support lever (27) upright. Turn the locking catch (10) on the filter bag housing (20) to the left and place it carefully on the swivel neck and the support lever. Then turn the locking catch back.

To lock the handle turn the handle catch (16) at the handle joint of the filter bag housing (20) forward, then slide the handle assembly (2) in as far as possible and lock it with the handle catch.

Insert the attachment tube (19) into its storage position on the side of the machine. The attachment tube handle (15) must be placed on the projection (24). Slide the proper end of the hose into the tube (19).

To connect the hose with the filter bag housing, insert the black hose end into the connecting tube (25) and slide it in completely. To unlock the hose press the retaining ring (13) at the projecting sections.

GENERAL INFORMATION

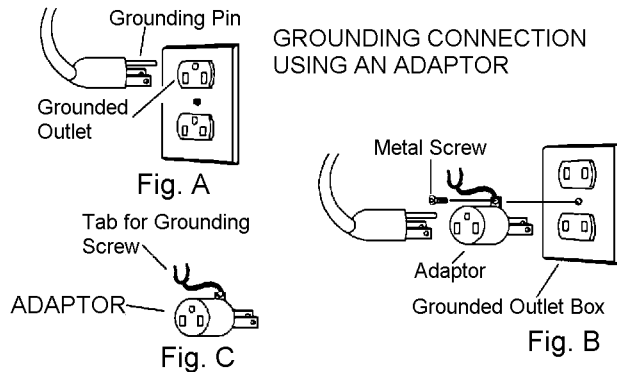
Grounding Instructions

This machine must be grounded. If it should malfunction or breakdown, grounding provides a path of least resistance for electric current to reduce the risk of electric shock. This machine is equipped with a cord having an equipment-grounding conductor and grounding plug. The plug must be plugged into an appropriate outlet that is properly installed and grounded in accordance with all local codes and ordinances.

WARNING:

Improper connection of the equipment-grounding conductor can result in a risk of electric shock. Check with a qualified electrician or service person if you are in doubt as to whether the outlet is properly grounded. Do not modify the plug provided with the appliance - if it will not fit the outlet, have a proper outlet installed by a qualified electrician.

This appliance is for use on a nominal 120-volt circuit, and has a grounded plug that looks like the plug in "Fig. A". A temporary adaptor that looks like the adaptor in "Fig. C" may be used to connect this plug to a 2-pole receptacle as shown in "Fig. B", if a properly grounded outlet is not available. The temporary adaptor should be used only until a properly grounded outlet, (Fig. A) can be installed by a qualified electrician. The green colored rigid ear, lug, or wire extending from the adaptor must be connected to a permanent ground such as a properly grounded outlet box cover. Whenever the adaptor is used, it must be held in place by a metal screw.



Note: Adaptors are not allowed in Canada.

The motors in the vacuum are permanently lubricated and sealed. Do not oil.

Never operate the unit without a filter bag.

When disconnecting the power cord from the electrical outlet, grasp the plug. Pulling it out by the cord itself can damage the insulation and internal connections to the plug.



SPECIFICATIONS

ITEM	DIM/CAPACITY
Vacuum Motor	Lamb, two-stage, non-bypass
Vacuum Motor Performance	Sealed waterlift 80" CFM (open) 105"
Brush Motor	150 watt
Brush	Replaceable strip, 12.7"
Height	48.7"
Overall Width	14"
Weight	18 lbs.
Cable	40', 18 gauge, black with molded 3-prong plug
Electrical	Operates on 120V, 60 cycle 3-wire grounded
Housing	Injection molded, high impact ABS with protective coating
Bag Capacity	5.6 quarts
Brush Drive	Toothed neoprene timing belt

RECOMMENDED SPARE PARTS

PART NO.	PRV NO.	DESCRIPTION	QTY
86142650	5040HG	HOSE	1
86142050	1037EH	HANDLE GRIP CPL	1
86002400	2046	BRUSH STRIP 14"	2
86001640	4028	BRUSH STRIP 18"	2
86139120	1260DG	CABLE, 3-WIRE	2
	1947	POWER CABLE W/PLUG	2
86284840	5300 SM	FILTER BAG PACK	2 PKG.
86142690	1875	HOSPITAL GRADE FILTER	2
86141370	1878	EXHAUST FILTER	2
86144620	5424DG	RETAINING RING	2

OPERATING INSTRUCTIONS

Preparation

1. Before putting the unit in service, check the filter bag. If the bag is full or ripped, do not attempt to use the unit until a replacement filter bag is installed.
2. Inspect the condition of the power cord. If there is damage to the cord, report it to your supervisor immediately.



3. Plug in the unit and turn on the power switch.
4. With the tip of your toe, release the handle lock by pressing down on the foot pedal.
5. Check the proper brush height.



- A "green light" indicates that the brush setting is correct and running properly.
- A "green and red light" indicates that the brush is not contacting the carpet sufficiently. Adjust the brush setting by turning the pile adjustment button to a lower number. If the light still shows at position #1, the brush strip is worn and must be replaced.
- A "red light" indicates that the brush has become blocked and is not turning. Turn the unit off, unplug the cord from the outlet and clear the blockage.

Operation

1. The powerhead motor stops automatically when the dust bag housing is brought to an upright position. If the powerhead is not operating, make sure that the dust bag housing is not in the upright position.
2. If the bag full indicator light comes on during operation, check the following:
 - Is the filter bag full?
 - Is there a blockage in the hose or powerhead?

To replace the filter bag:

- A. Pull the cover release latch and lift from the dust bag housing.
- B. Slide the dust bag sealing plate from the holder.
- C. Slide the sealing plate of a new bag into the holder and push it in firmly.
- D. Slip the bottom of the filter bag into the fold of the hospital filter.



BE CAREFUL NOT TO RIP THE FILTER BAG DURING INSTALLATION.

- To disconnect the powerhead, turn the locking catch clockwise and lift the upper unit off the powerhead.



Clean Up

- Disconnect the plug from the wall outlet by grasping the wall plug and pulling straight out of the outlet.
- Inspect the filter bag. If full, replace immediately.
- Loosely wrap the cord around the cord hooks.
- Wipe down the unit.

PERIODIC MAINTENANCE



Always remember to unplug the machine before doing any maintenance or repair.

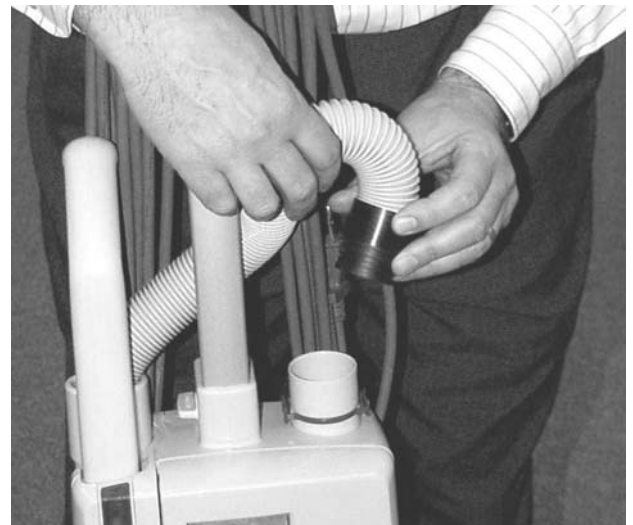
Daily:

Powerhead

- Clear any debris or obstructions (string, thread, etc.) from the roller assembly.
- Check for obstructions in the neck and throat of the powerhead.
- Check the operation of the foot pedal.
- Check the micro-switch in the chassis that controls the powerhead for smooth operation. Turn on machine and move dust bag housing from the storage position to the working position (brush motor will start and stop).

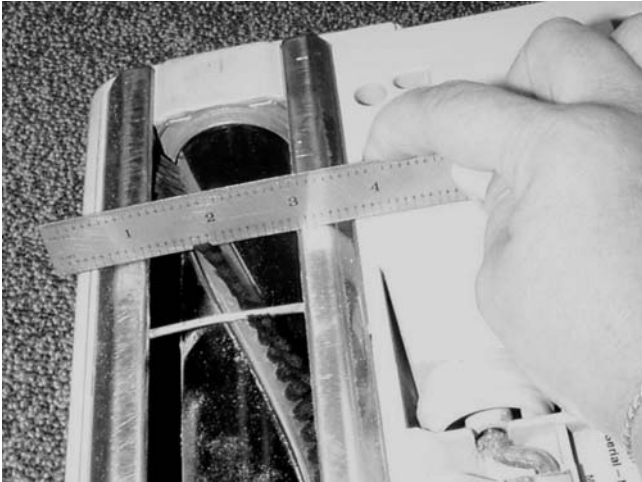
Chassis

- Make sure all the filters are free of visible dirt.
- Check that the filter cover is properly sealed.
- Identify and report a damaged cord or plug immediately.
- Check the strain reliefs in the body and below the handle to make sure they are securely attached.
- Seal the hand nozzle and see if the bag full indicator light comes on.
- Check for cracks or pin hole leaks in the hose. Remove any obstructions.



Monthly

1. Check the powerhead for roller bristle wear. The bristles must extend beyond the glideplate for effective cleaning.



2. Make sure all screws and fasteners are tight.

Quarterly

1. Check the drive belt in the powerhead for proper tension and excess wear.
2. Make sure the motor rotates freely when turned by hand.
3. Check the length of the carbon motor brushes. If they are less than 3/8" replace both brushes.

TROUBLESHOOTING

CAUTION:

The work detailed below should only be carried out by persons qualified to repair electrical appliances.

WARNING:

Always remember to unplug the machine before doing any maintenance or repair.

Problem: Electrical, No Power

1. Check that the cord is completely plugged into outlet.
2. Check the fuse or circuit breaker for that outlet.
3. Check the cord itself for breaks or loose connections.
4. Check the connections to the switch and motors.

Problem: Loss of Power/Performance

1. Check to see if the filter bag is full and needs to be emptied.
2. Check for obstructions in the powerhead, neck throat, or hose.
3. Check for bad seal on back.
4. Check hose for cuts or wear.
5. The roller brush bristles may be too short.
6. Check fine particle filter and exhaust filter. If either or both are visibly dirty, then replace.

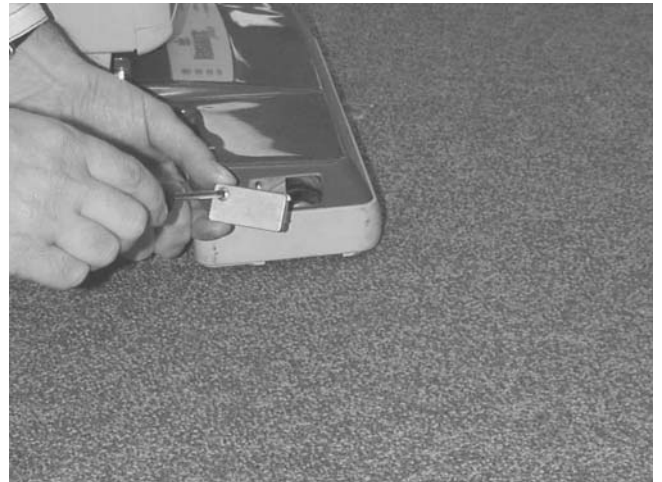
REPAIR OR REPLACE

WARNING:

Always remember to unplug the machine before doing any maintenance or repair.

Powerhead: Replace Brush Motor

1. Remove the screw holding the brush strip access cover.



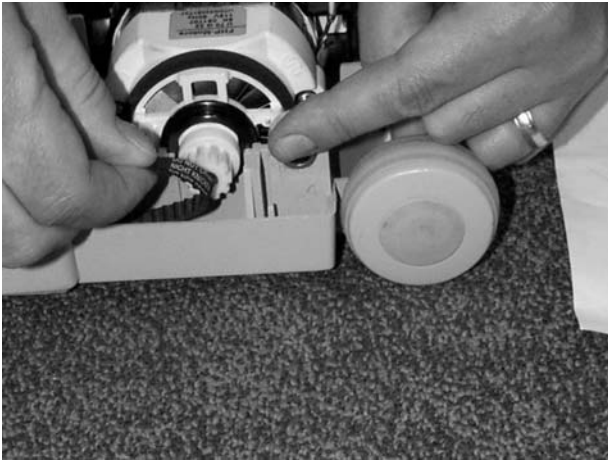
2. Remove all screws from underneath the chassis.
3. Lift off the cover.
4. Remove the two Phillips screws securing the motor and remove the drive belt.
5. Remove the motor from the chassis and unscrew the Phillips screws holding the terminal block in place.
6. Disconnect the power wires.

Reverse the process outlined above to install the new brush motor.

Powerhead: Replace Roller Brush Assembly

1. Slide the drive belt off the motor pulley.
2. Remove the bearing block screws.
3. Lift the brush roller and bearing blocks out evenly.
4. Place the new brush roller in the bearing blocks.

Powerhead: Replace Motor Pulley



1. Insert the tip of a straight-blade screwdriver into a groove of the motor pulley.
2. Give the screwdriver a light tap with a hammer in a counter clockwise direction.
3. Unscrew the motor pulley by hand and remove.

Reverse the process outlined above to install the new motor pulley.

Powerhead: Replace Wheel Assembly

1. Unscrew the three screws and take off the axle clamps holding the assembly in place.
2. When replacing the new assembly, apply a small amount of lubricant to the axle.
3. Hook one end of the axle spring to the axle.
4. Pull the other end of the spring approximately a quarter of a turn around the axle and put the axle in place.
5. Replace the axle clamps and screws.

Powerhead: Replace Brush Strips

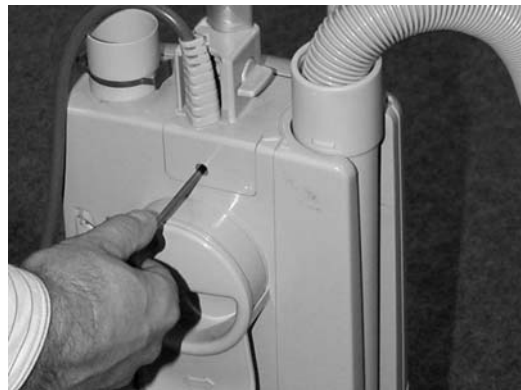
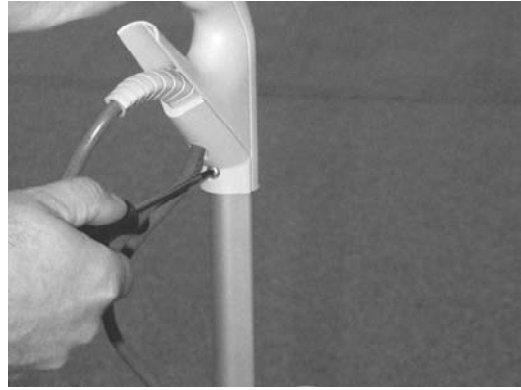
1. Remove the screw holding the brush strip cover in place.
2. Using pliers, pull out the brush strips.
3. Install the new brush strips with the pointed end of the strip entering first.

To Replace Power Cord:

1. Remove the handle's strain relief attachment screw.
2. Open the small cover near the handle
3. Disconnect the green, black, and white wires for the terminals.
4. The strain relief must be removed before the cord can be removed.

Reverse the process outlined above to install the new power cord.

Power Cord Replacement



To Replace Power Switch and Circuit Board:

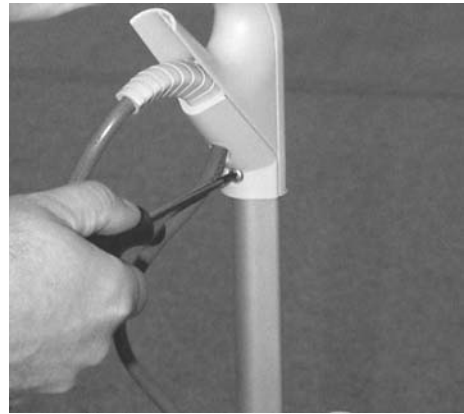
1. Remove the wand from it's housing.
2. Remove the screws and the wand's housing cover.
3. Remove the electrical leads from the board's terminals.
4. Replace the switch and board assembly.

To Replace the Vacuum Motor:

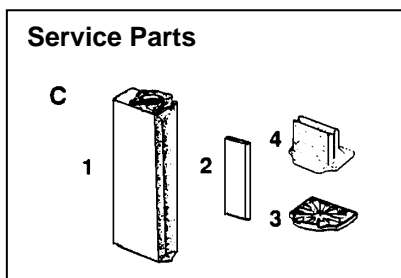
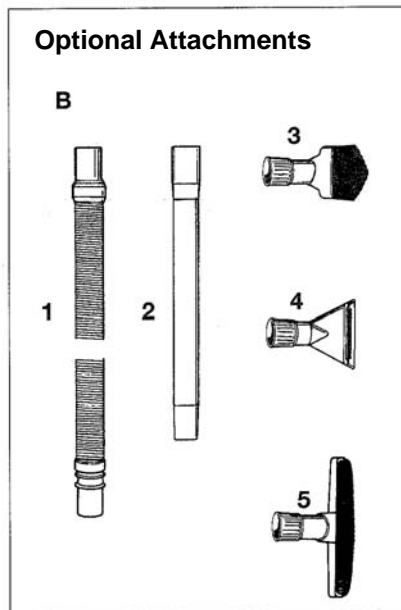
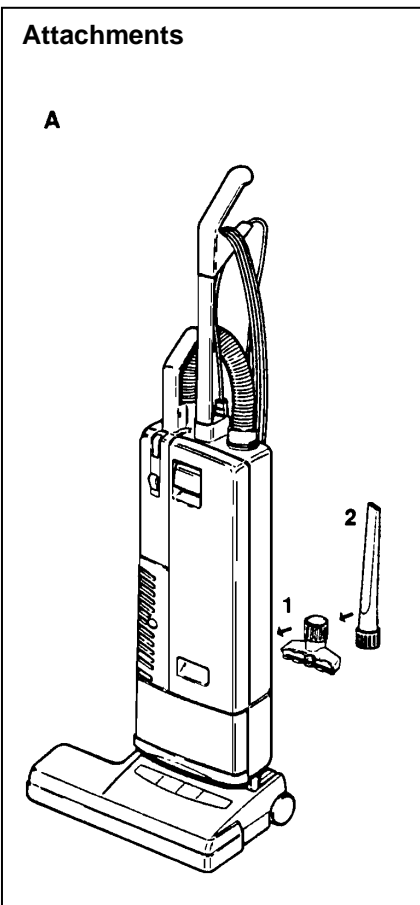
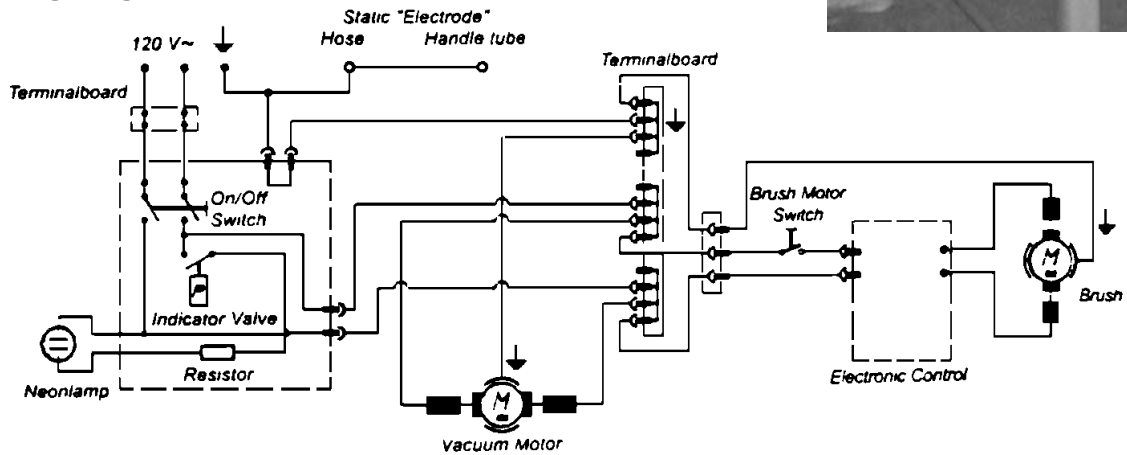
1. Remove the bumper just beneath the motor cover.
2. Remove the four screws on the motor cover.
3. Disconnect the wires, noting where each wire is removed from.

To Replace the Handle:

1. Remove the screw holding the handle and the strain relief.
2. Remove handle.

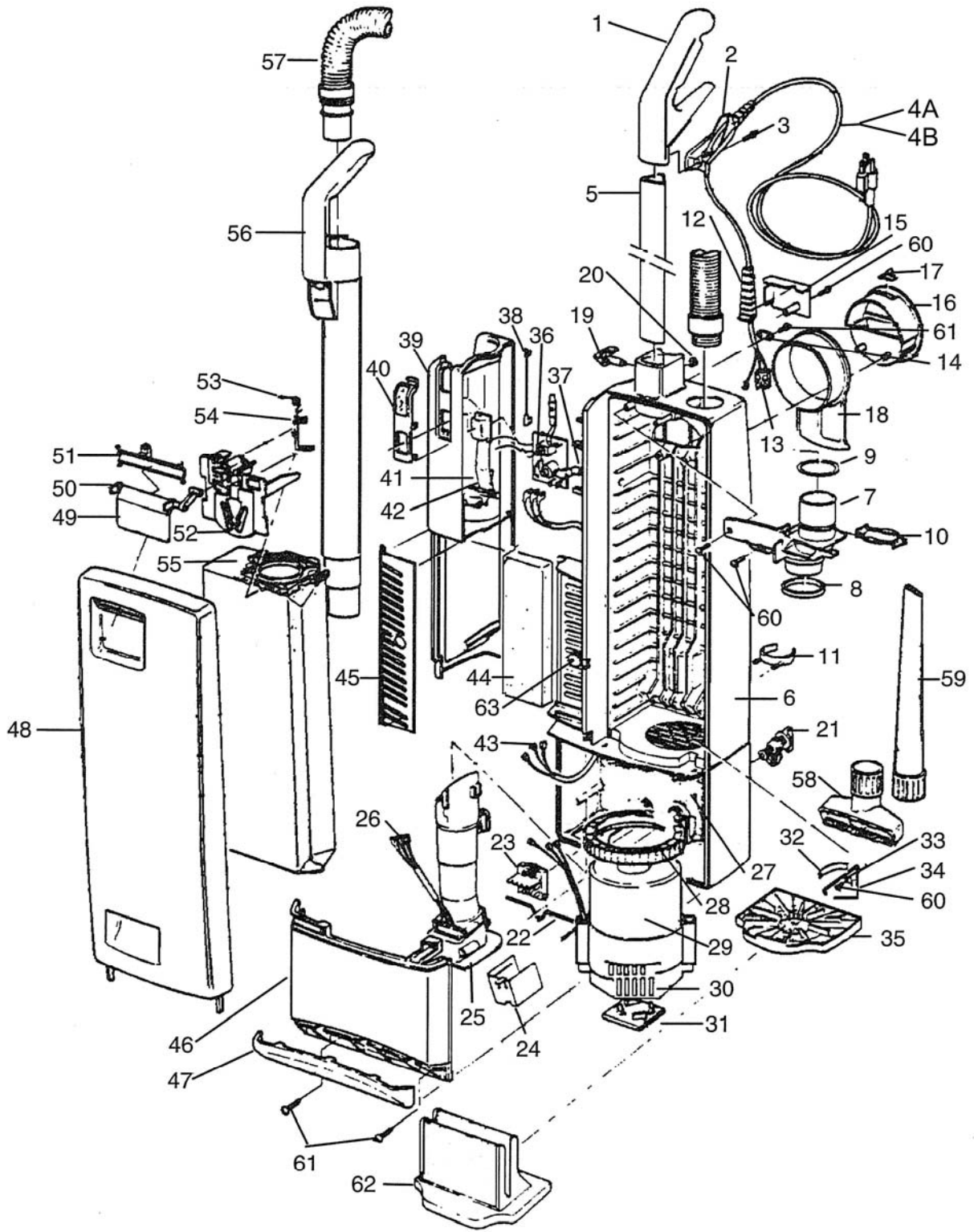


Wiring Diagram



REF	PART NO.	PRV NO.	DESCRIPTION
A1	86146310	1491JE	UPHOLSTERY NOZZLE
A2	86140860	1092JE	CREVICE NOZZLE
B1	86141520	1495US	EXTENSION HOSE
B2	86141510	1084	EXTENSION TUBE
B3	86141000	1094HG	DUSTING BRUSH
B4	86146270	1090HG	UPHOLSTERY NOZZLE, GRY
B5	86146530	1325HG	WALL/UPHOL BRUSH, GRY
C1	86284840	5300SM	SENSOR FILTER BAG PACK
C2	86141370	1878	EXHAUST FILTER 370/470
C3	86143430	1825	MOTOR FILTER
C4	86142690	1875	HOSPITAL GRADE FILTER

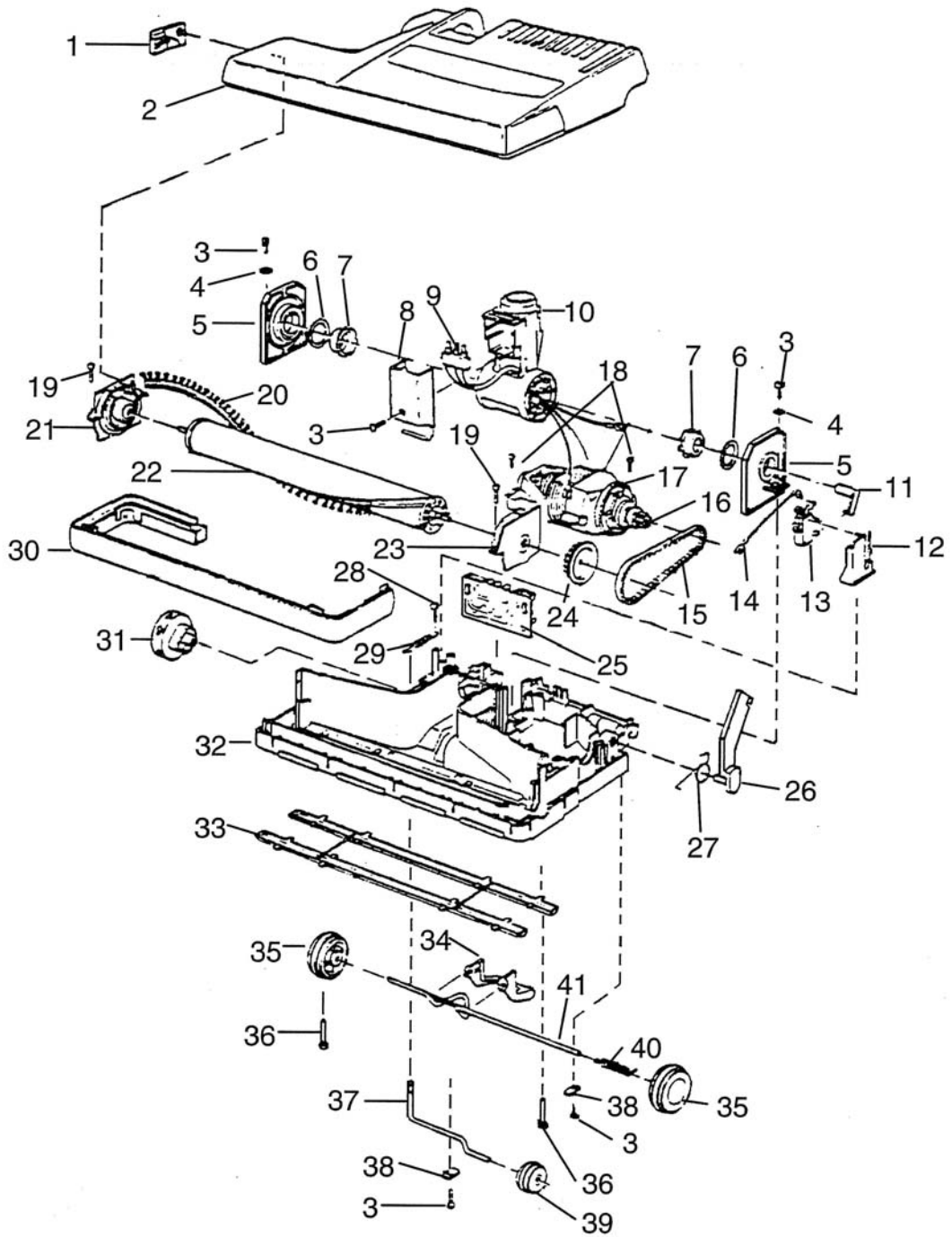
SME POWER PLUS / SMP 14-18



PARTS LIST / SME POWER PLUS / SMP 14-18

REF	PART NO.	PRV NO.	DESCRIPTION
1	86142050	1037EH	HANDLE GRIP COMPLETE
2	86142120	1596HG	HANDLE COVER
3	86147120	0127	SCREW, M4 X 10 MM TAPTITE
4A	86139120	1260dg	CABLE, 3-WIRE DK GRY
4B	86335360	1947	CORD SET, GRAY 17AWG
5	86142150	1848	HANDLE
6	86141070	1832HG	DUST BAG HOUSING
7	86142840	1835HG	INTERNAL COVER 370/470
8	86144930	5289	SEAL, FILTER TUBE
9	86144900	5043	SEAL
10	86144620	5424DG	RETAINING RING, DK GRY
11	86140080	1823HG	CLIP, DUST BAG HOUSING-SR12
12	86141970	5359HG	GROMMET
13	86146170	0502	TERM. BLOCK
14	86139110	1030UL	CABLE CLAMP
15	86140430	1812HG	COVER
16	86139430	1814HG	CARRYING HANDLE
17	86145350	5146	STOP SPRING (HOOK)
18	86139170	1813HG	CABLE HOOK
19	86352680	1859dg	HANDLE CATCH
20	86140040	0161	CLIP, 4 DIN 6799
21	86143080	0850DG	LOCKING CATCH
22	86143100	1811	LOCKING ROD
23	86146200	1265UL	TERM. BLOCK
24	86140420	1524	COVER, TERMINAL BLOCK
25	86140220	1807HG	CONNECTOR
26	86141590	1837	FEMALE CONTACT HOLDER
27	86145170	1851	SOUND INSULATION
28	86146380	1047	VAC MOTOR SEAL
29	86146410	1843	VAC MOTOR
	86139400	05117S	CARBON BRUSH SET 100/120V
30	86143410	1821UL	MOTOR COVER
31	86143420	1822	MOTOR SUPPORT
32	86143010	1027	LEAF SPRING
33	86139970	1073	CLAMP
34	86140230	1824	CONNECTING ROD
35	86143430	1825	MOTOR FILTER (OPT.)
36	86139950	1936ER	CIRCUIT BOARD 120V 3-P UL
	86143760	1903	PC BOARD COVER
37	86141680	1860	FITTING
38	86141990	0851UL	GROUNDING WIRE
39	86146470	1852WI	VACUUM TUBE COVER
40	86143040	1869HG	LENS BAG LIGHT INDICATOR
41	86145580	1830BL	SWITCH BUTTON
42	86145220	1862	SPRING
43	86142830	1834	INTERNAL CABLE
44	86141370	1878	EXHAUST FILTER 370/470
45	86141360	1802HG	EXHAUST FILTER COVER
46	86143460	1853NE	MOTOR COVER
47	86141050	1804HG	DUST BAG HSG. BUMP.
48	86141750	1846WI	FRONT COVER CPL.
49	86140440	1818BL	COVER RELEASE
50	86144970	6040	SEAL, RELEASE COVER
51	86143940	1819	PLASTIC AXLE COVER
52	86138040	1847	BAG HOLDER, CPL.
53	86144760	5091	SAFE. CATCH SPRING
54	86144750	1817	SAFETY CATCH
55	86284840	5300SM	SENSOR FILTER BAG PACK
56	86141550	5045HG	EXTENSION TUBE, GRY
57	86142650	5040sb	HOSE, SENSOR GRY
58	86146310	1491JE	UPHOLSTERY NOZZLE
59	86140860	1092JE	CREVICE NOZZLE
60	86147030	0102	SCREW M3,9 X13 MM DIN 7981
61	86147040	0103ER	SCR, M3,9 X16 MM DIN 7981
62	86142690	1875	HOSPITAL GRADE FILTER
63	86144610	1884HG	RETAINING BUTTON

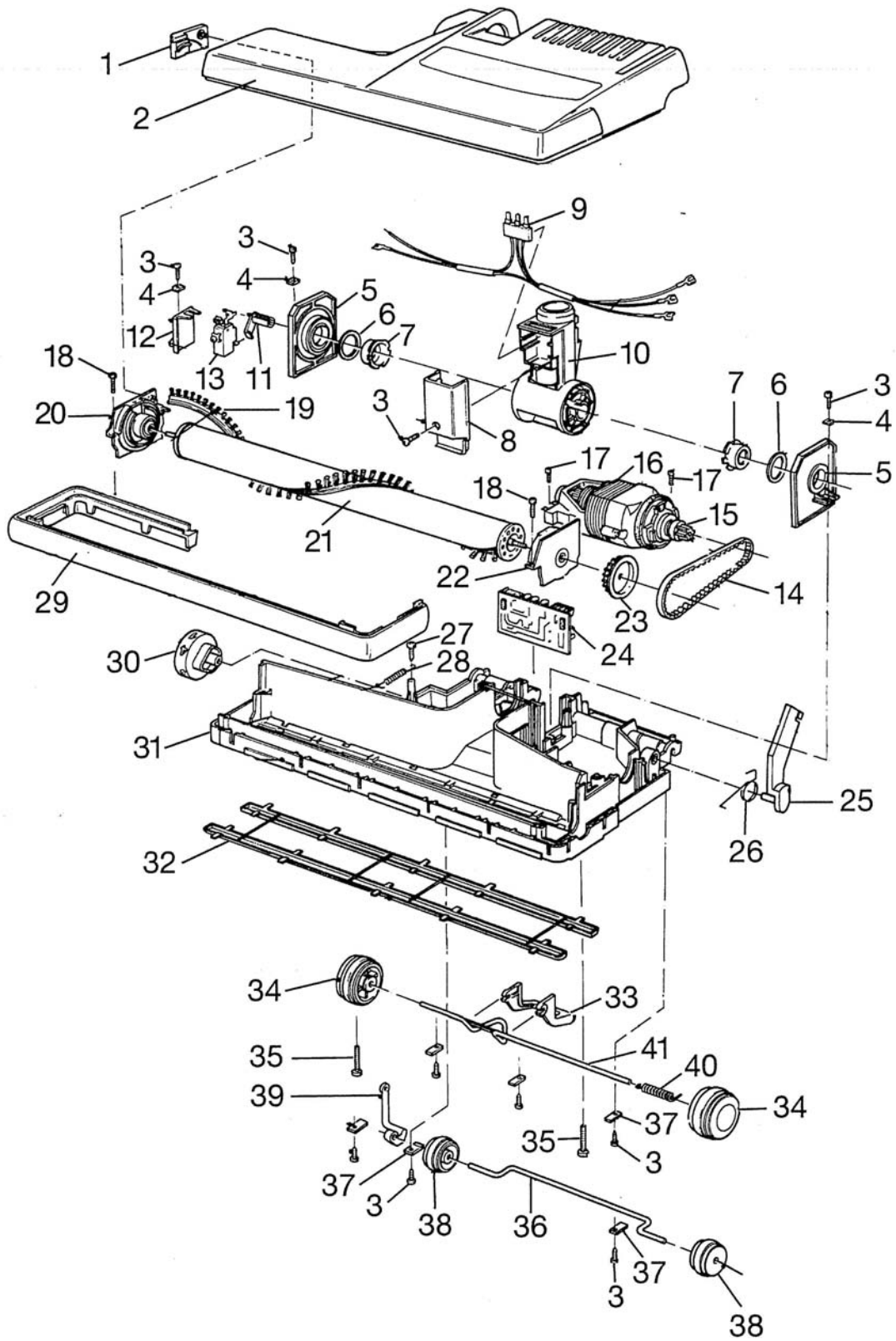
SME POWER PLUS / SMP14



PARTS LIST / SME POWER PLUS / SMP14

REF	PART NO.	PRV NO.	DESCRIPTION
1	86140530	2542	COVER, VSE BRUSH STRIP
2	86140600	2643WI	COVER 370, CPL
3	86147030	0102	SCREW, M3,9 X 13 MM DIN 7981
4	86146550	0141	WASHER, LOCK
5	86145880	2613	SWIVEL SUPPORT
6	86146560	0155	WASHER
7	86145780	2467	SWIVEL NECK PLASTIC BEARING
8	86145840	2602HG	SWIVEL NECK COVER 370/470
9	86146760	2612UL	WIRE, SWIVEL NECK ASSEMBLY
10	86145870	2610UL	SWIVEL NECK ASSY
11	86145620	2605	SWITCH LEVER
12	86143290	2624	MICRO SWITCH SUPPORT CPL.
13	86143240	0531	MICRO SWITCH F. SWIVEL
14	86143680	0849UL	NECK WIRE
15	86235390	2049	DRIVE BELT
16	86144420	2025	PULLEY- MOTOR
17	86138460	2241UL	BRUSH DRIVE MOTOR 115V U70G32
-	86139380	05095S	CARBON BRUSH SET 120V
18	86144880	0174	SCREW, BRIDGE SR
19	86147060	0105	SCREW, M3,9 C 19 MM DIN7981CPLT
20	86002440	2046	BRUSH STRIP 14"
21	86138100	2047	BEARING BLOCK VSM/VSE RH
22	86138430	2030ER	BRUSH ASSY CPL.
23	86138110	2091	BEARING BLOCK VSM/VSE LH
24	86144430	2458	PULLEY, VSE BRUSH ROLLER
25	86140290	2572ER	CONTROL PC BOARD VSE1/3
-	86143780	2636	PC BOARD COVER
26	86145450	2653hg	SUPPORT LEVER
27	86345580	2651	SPRING, VSE RETURN
28	86147040	0103	SCREW, M3,9 X 16 MM DIN 7981
29	86145270	4019	SPRING
30	86138860	2522HG	BUMPER
31	86143830	2622HG	PILE ADJ. KNOB 14"
32	86139670	2543HG	CHASSIS VSP14/JAV14
33	86143220	2005	METAL PLATE
34	86141700	2528OR	FOOT PEDAL
35	86146620	2614HG	WHEEL
36	86147070	0111	SCREW, M5 X 30 MM DIN 7985A NP
37	86137880	2524	AXLE, VSE1 PILE ADJUSTMENT
38	86140000	2014	AXLE CLAMP
39	86146610	2608HG	WHEEL , PILE ADJ.
40	86146570	2010	WHEEL RETURN SPRING
41	86137890	2525	AXLE VSE-1

SME POWER PLUS / SMP18



PARTS LIST / SME POWER PLUS / SMP18

REF	PART NO.	PRV NO.	DESCRIPTION
1	86140530	2542	COVER, VSE BRUSH STRIP
2	86140750	4621WI	COVER, CPL
3	86147030	0102	SCREW, M3,9 X 13 MM DIN 7981
4	86146550	0141	WASHER, LOCK
5	86145880	2613	SWIVEL SUPPORT
6	86146560	0155	WASHER
7	86145780	2467	SWIVEL NECK PLASTIC BEARING
8	86145840	2602HG	SWIVEL NECK COVER 370/470
9	86146780	4615UL	WIRE, SWIVEL NECK ASSEMBLY
10	86146060	4614UL	SWIVEL NECK ASSY
11	86145630	4601	SWITCH LEVER
12	86143280	2453	MICRO SWITCH SUPPORT
13	86143240	0531	MICRO SWITCH F. SWIVEL
14	86147010	4024	DRIVE BELT
15	86144420	2025	PULLEY- MOTOR
16	86138580	4022UL	BRUSH MOTOR, 115V U70G40
-	86139380	05095S	CARBON BRUSH SET 120V
17	86144880	0174	SCREW, BRIDGE SR
18	86147060	0105	SCREW, M3,9 C 19 MM DIN7981CPLT
19	86001640	4028	BRUSH STRIP 18" MODEL U19840
20	86138100	2047	BEARING BLOCK VSM/VSE RH
21	86138590	4033ER	BRUSH ASSY CPL. 18"
22	86138110	2091	BEARING BLOCK VSM/VSE LH
23	86144430	2458	PULLEY, VSE BRUSH ROLLER
24	86143710	4532ER	PC BOARD VSE2
-	86143780	2636	PC BOARD COVER
25	86145450	2653hg	SUPPORT LEVER
26	86345580	2651	SPRING, VSE RETURN
27	86147040	0103	SCREW, M3,9 X 16 MM DIN 7981
28	86145270	4019	SPRING
29	86138910	4522HG	BUMPER
30	86143830	2622HG	PILE ADJ. KNOB 14"
31	86139800	4611HG	CHASSIS GRY PLUS
32	86143230	4004ER	METAL PLATE 450/460 SET
33	86141700	2528OR	FOOT PEDAL
34	86146650	4603HG	WHEEL
35	86147070	0111	SCREW, M5 X 30 MM DIN 7985A NP
36	86143870	4006	PILE ADJUSTMENT AXLE & WHEEL ASSM
37	86140000	2014	AXLE CLAMP
38	86146610	2608HG	WHEEL , PILE ADJ.
39	86143880	4012	PILE ADJUSMENT LEVER
40	86146570	2010	WHEEL RETURN SPRING
41	86137960	4523	AXLE, VSE2

NOTES:

LIMITED WARRANTY

The ServiceMaster Company warrants that this equipment, which has been manufactured, tested and inspected in accordance with carefully specified engineering specifications, is free from defects in material and workmanship.

This warranty is, however, subject to the following qualifications, conditions and limitations which are set forth to provide you and all users of ServiceMaster equipment with information concerning the duration, extent, availability and applicability of the ServiceMaster Limited Warranty, the procedure to be taken to obtain its performance and other information concerning the ServiceMaster Warranty policy.

Duration of Warranty and to whom extended

This warranty extends for one year from the date of the original purchase of the ServiceMaster equipment by the end user.

Parts of ServiceMaster equipment not covered by warranty

Certain parts of the equipment require replacement in the ordinary course of use do to normal wear by reason of their characteristics. These are normal wear items such as cords, switches, carbon brushes, bearings, filters, brush strips, etc.

Exceptions and exclusions from warranty

This equipment is required to be used on electric current as indicated on the nameplate. Otherwise damage, defects, malfunctions, or other failures of the equipment arising from use on electric current not as indicated are excepted and excluded from this warranty.

Defects, malfunctions, failure or damage of the equipment caused by improper, unreasonable or negligent use or abuse while in the possession of the purchaser are likewise excluded from this warranty.

If repair work is done on your equipment by anyone other than those designated as authorized to perform such work without first having obtained factory instructions, The ServiceMaster Company, at its sole option, may determine the this warranty will not apply and that

reimbursement for such repair will not be made because of the failure to comply with such specified instructions.

Procedures to be taken to obtain performance of warranty

Repairs - To secure repair of the equipment or any warranted parts under this warranty, the following procedure should be taken:

The inoperative equipment or warranted parts, together with satisfactory evidence of the purchase date, must be delivered, with shipping and delivery charges prepaid, to a ServiceMaster authorized service center.

If you are unable to locate the foregoing, you may write or otherwise communicate with the Warranty Department of the ServiceMaster Company for instruction before repair service is performed by anyone else (800-937-9444). The Warranty Department will provide the location of the closest available ServiceMaster authorized service center.

Upon compliance with the above procedure, all warranted defects will be repaired, at no additional charge or cost to the customer, and the repaired product returned to the customer, with all shipping and delivery charges reimbursed upon request.

In the procedures set forth above, **PLEASE MAKE CERTAIN** to state the ServiceMaster model, type and serial number as shown on the name plate of the equipment.

REPLACEMENT - In the event of a defect, malfunction or failure of your equipment of any warranted part to conform to this warranty, The ServiceMaster Company may, as its sole option and expense, replace the equipment or any warranted part with another new identical or reasonably equivalent model or part in lieu of repairing the defect.

This warranty gives you specific legal rights, and you may also have other rights which vary from state to state.

There are no other warranties expressed or implied, including any implied warranties or merchantability or fitness for a particular purpose.

In no event shall ServiceMaster be liable for speculative or consequential damages resulting from the failure thereof.

The ServiceMaster Company
One ServiceMaster Way
Downers Grove, IL 60515 USA
(800-937-9444)

