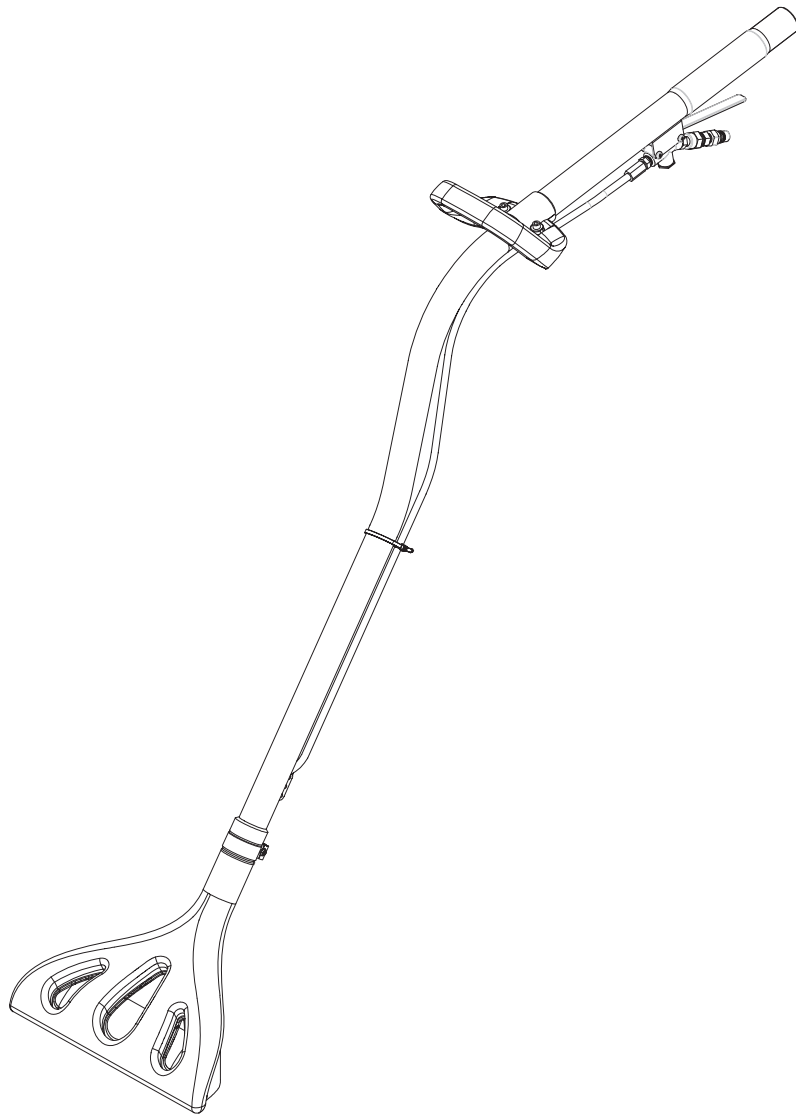


# WAND ASM

## INSTRUCTION SHEET



**MODEL #**

**ORDER #**

**WAND, CARPET EXTRACTION, 13"**

**8.632-900.0**

**WAND, CARPET EXTRACTION, 13",C400**

**8.633-100.0**

# CONTENTS

---

Contents .....	2
Model and Dealer Data Log.....	2
Important Safety Information .....	3
Assembly Instructions.....	3
Exploded View & Parts List.....	4

## Model and Dealer Data Log

Model Number \_\_\_\_\_

Date of Purchase \_\_\_\_\_

Dealer \_\_\_\_\_

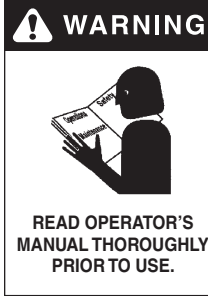
Address \_\_\_\_\_

Phone Number \_\_\_\_\_

Note: Fill in the Data Log upon receipt of your new accessory.

Parts may be ordered from your dealer. When placing an order for parts, the part number, model and order number must be included.

## IMPORTANT SAFETY INFORMATION

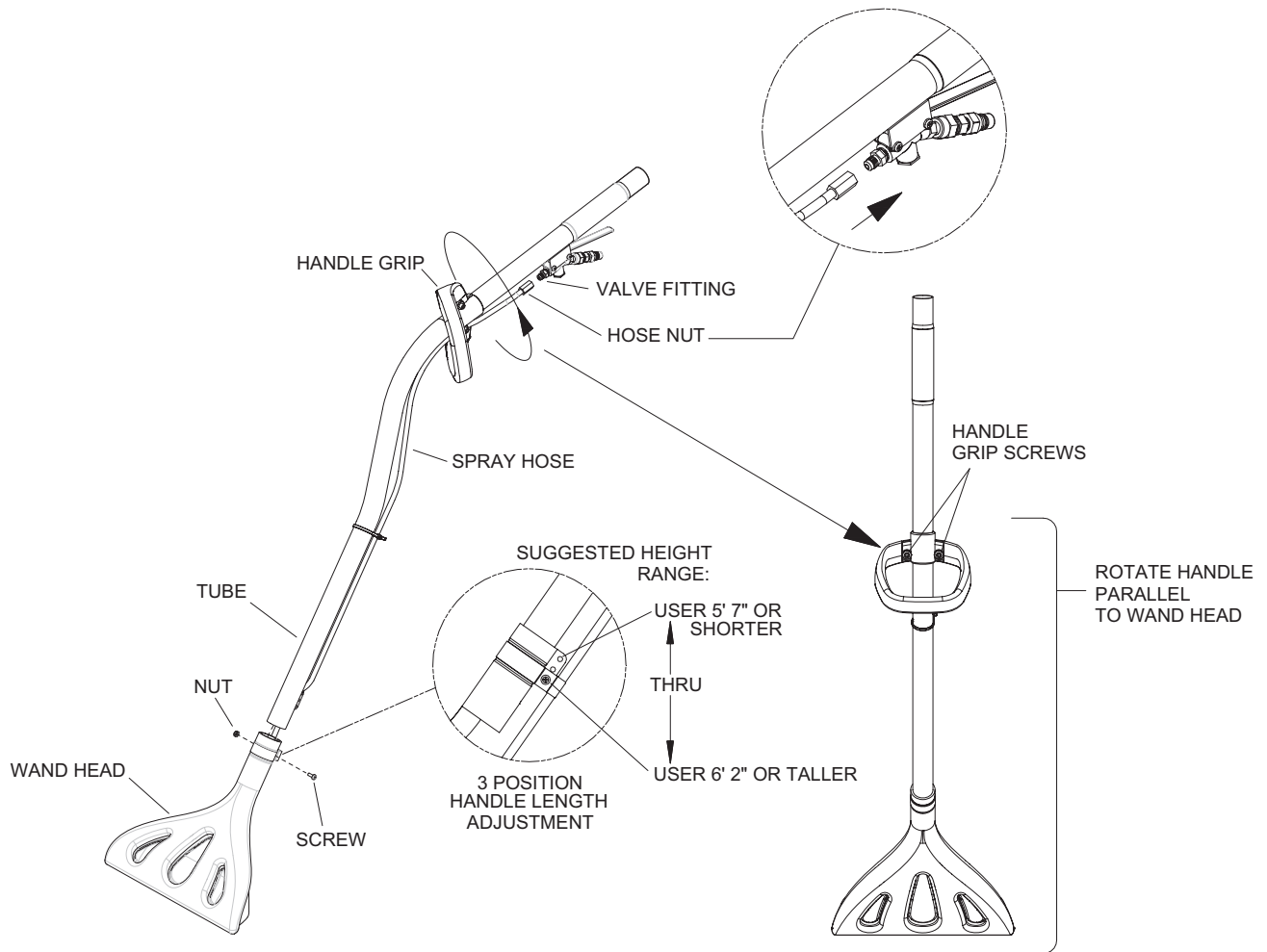


**WARNING:** To reduce the risk of injury, read all instructions thoroughly before using. This wand requires some assembly and adjustments.

**TOOLS REQUIRED:**

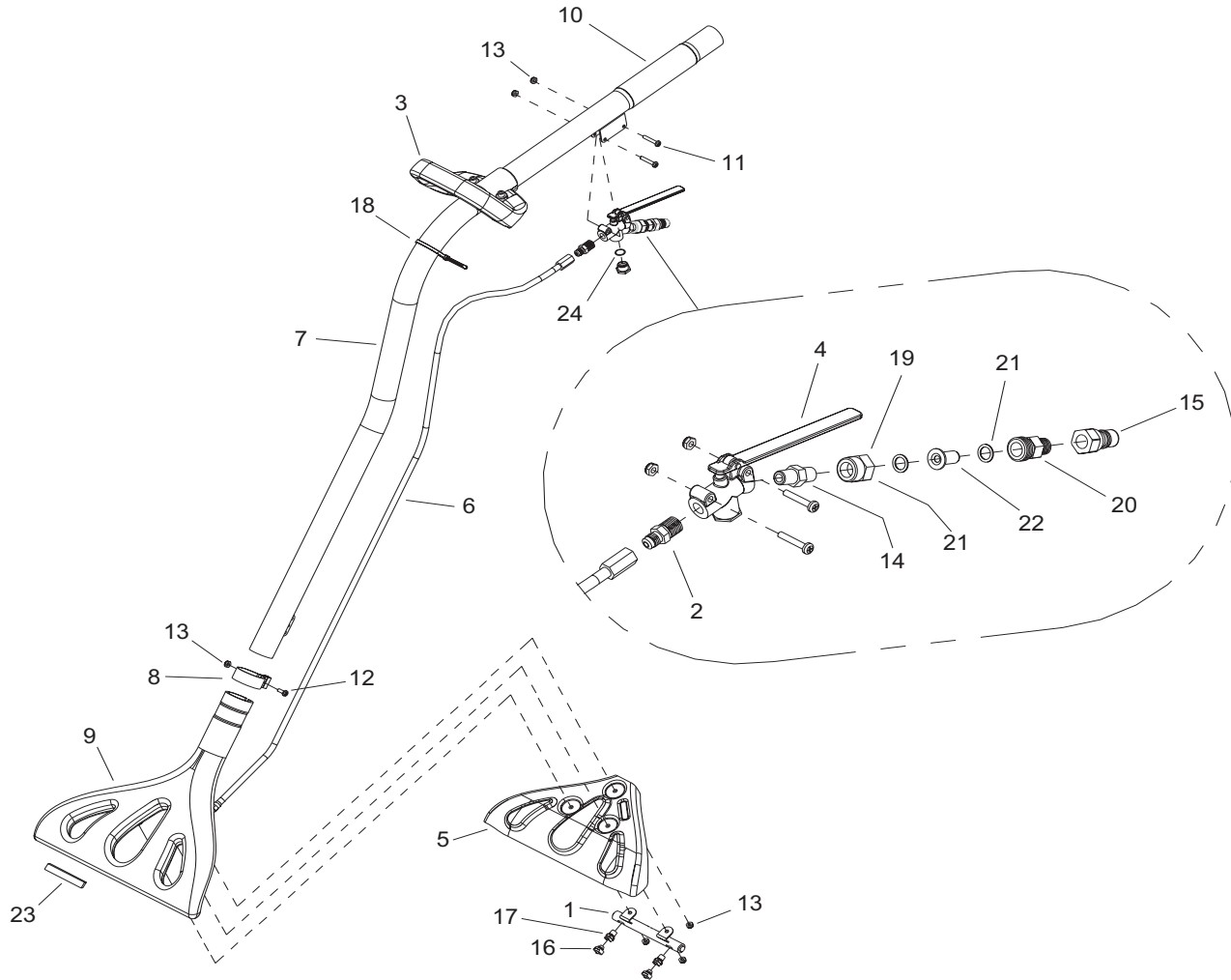
**PHILLIPS HEAD SCREW DRIVER 9/16" OPEN END WRENCH  
(ALLEN WRENCH INCLUDED)**

## ASSEMBLY INSTRUCTIONS



- 1. WAND HEAD:** PLACE WAND HEAD ON TUBE. POSITION AS SHOWN IN FIGURE.
- 2. INSERT SCREW INTO CORRECT POSITION FOR HEIGHT, INSTALL NUT AND TIGHTEN TO HOLD IN PLACE.**
- 3. SPRAY HOSE:** PLACE HOSE NUT ONTO VALVE FITTING AND TIGHTEN.
- 4. HANDLE GRIP:** LOOSEN HANDLE GRIP SCREWS IF NECESSARY. ROTATE HANDLE GRIP 90 DEGREES INTO POSITION AS SHOWN IN FIGURE ON THE RIGHT. TIGHTEN SCREWS TO HOLD IN PLACE.

## EXPLODED VIEW



## EXPLODED VIEW PARTS LIST

ITEM	PART #	DESCRIPTION	QTY	ITEM	PART #	DESCRIPTION	QTY
1	8.632-926.0	Manifold, Spray, Dual	1	13	8.627-099.0	Nut, 10-32 Hex Nylock	6
2	8.617-765.0	Conn, 1/4P X 1/4T BR	1	14	8.624-768.0	Nipple, 1/4 Hex	1
3	9.421-069.0	Handle, Wand Tool	1	15	8.600-558.0	Nipple, 1/4 FPT QD	1
4	8.632-727.0	Valve, Kingston, 30 DEG W/LVR	1	16	8.624-164.0	Jet, 11001, Mini-Quick	2
5	8.632-726.0	Shield, Wand Head	1	17	8.600-453.0	Jet Body, Mini-Quick w/Seal	2
6	8.632-725.0	Hose, Spray	1	18	8.626-492.0	Cable TIE. .19 X 7	1
7	8.929-020.0	Tube ASM, Wand	1	19	8.617-787.0	Cap, Bypass 4676-1/8 ZEEMS	1
8	8.632-720.0	Bracket, Clamp	1	20	8.617-786.0	Conn, 1/4P X 11/16-16M	1
9	8.632-692.0	Head, Wand, Dark Grey (Trim)	1	21	8.619-557.0	Washer, Nylon	2
10	8.620-220.0	Grip, Wand 1 1/2 X 6	1	22	8.619-349.0	Strainer, Jet, 50 Mesh	1
11	8.627-624.0	SCR, 10-32 X 1-1/8 PPHMS SS	2	23	8.633-108.0	Gasket, .06T X .25W X 3.0L	1
12	8.600-659.0	SCR, 10-32 X 1/2 PPHMS SS DL	1	24	8.633-118.0	Kit, Valve, Kingston 251-30-Kit	1