



BR-2250/BR-2500

Burnisher

Model No.:

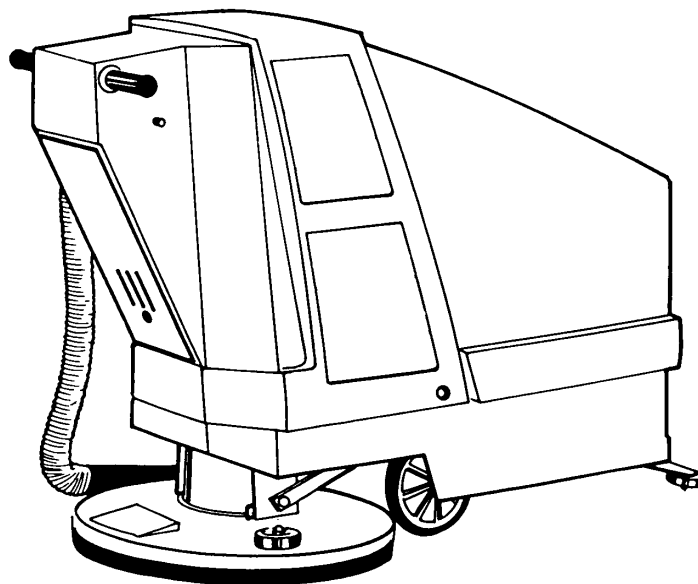
608342 – BR-2250

609248 – BR-2250 Can. Pac

608340 – BR-2500

609247 – BR-2500 Can. Pac

Operator and Parts Manual



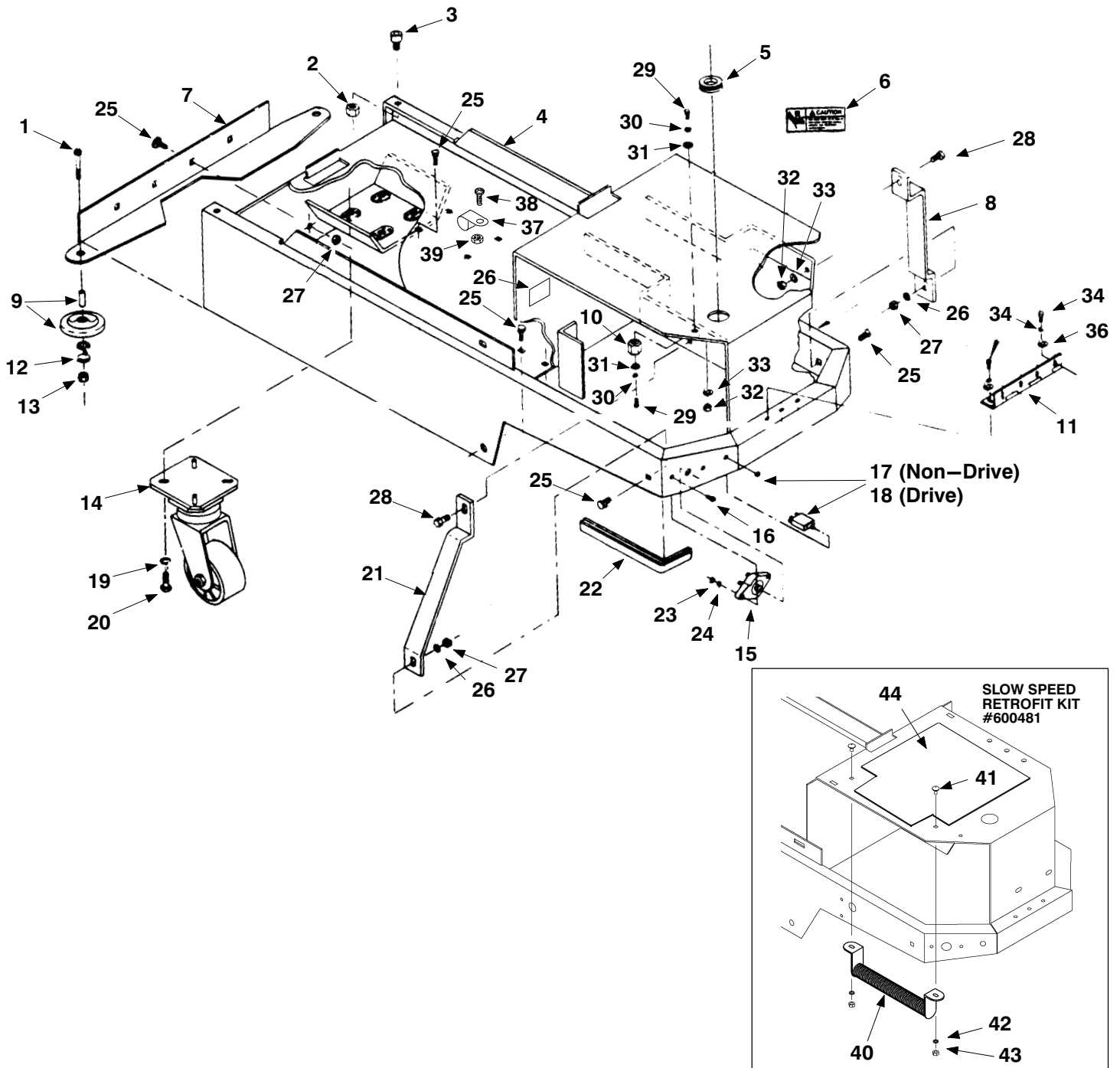
NOBLES

12875 RANSOM STREET
HOLLAND MI 49424 U.S.A.

CUSTOMER SERVICE: 1-800-365-6625
FAX: 1-800-678-4240

608376
Rev. 00 (09-99)

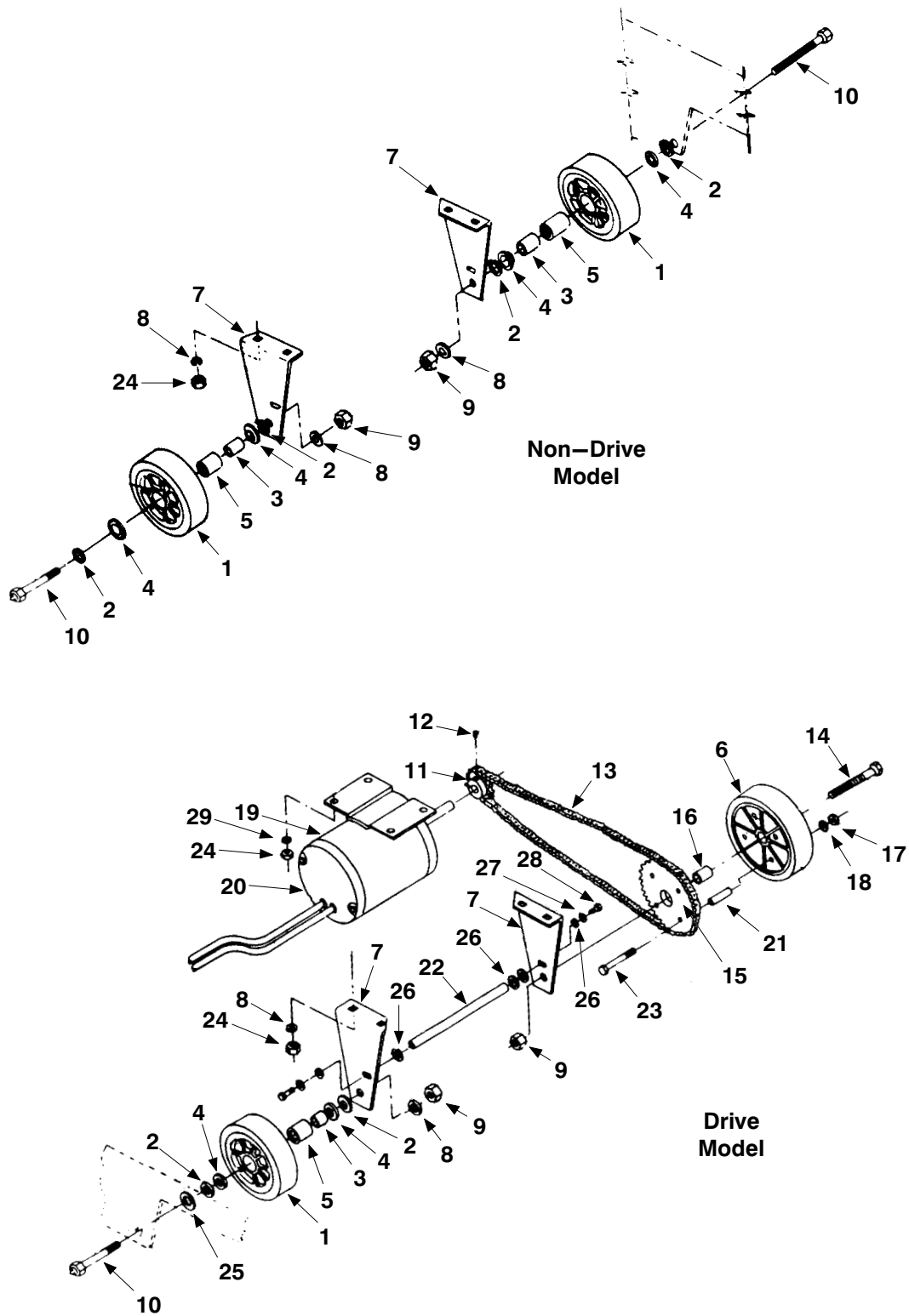
FRAME GROUP



FRAME GROUP

Ref.	Part No.	Description	Qty.
1	621 286 000	Screw, pan hd.	2
2	200 160 017	Nut	2
3	200 001 483	Screw	2
4	069 767 001	Frame weldt.	1
5	069 762 009	Grommet	1
6	602 040 000	Decal, Caution	1
7	069 767 102	Bracket, wall roller	1
8	069 767 178	Bracket, frame supp.	1
9	630450	Wheel, rubber	2
10	578427	Standoff, terminal	1
11	069 767 036	Hinge, shroud	1
12	140015	Washer lock	2
13	200 640 017	Nut, hex	2
14	069 760 030	Caster	1
15	190905	Circ. break., 70 amp	1
16	186 002 085	Screw, pan hd.	2
17	130781	Circ. break., 80 amp (non-drive model)	1
18	069 767 136	Circ. break., 7 amp (drive model)	1
19	200 351 020	Washer, lock	4
20	200 031 541	Screw, hex hd.	4
21	069 787 174	Bracket, frame supp.	1
22	069 767 121	Edging	1
23	575380	Nut, hex	2
24	069 762 005	Washer, lock	2
25	069 767 077	Screw, carriage	14
26	602 202 000	Decal, Hot Caution	1
27	140546	Nut, Lock	12
28	200 607 491	Screw, hex hd.	2
29	069 762 115	Screw hex hd.	2
30	140016	Washer, lock	2
31	200 651 019	Washer, Flat	2
32	200 160 017	Nut, hex lock	2
33	200 303 019	Washer, Flat	2
34	200 031 433	Screw hex hd.	7
35	578 728	Washer, lock	2
36	140012	Washer	7
37	140916	Clamp	1
38	140196	Screw	1
39	140552	Nut, Lock	1
40	069 764 063	Resistor, slow speed	1
41	069 767 164	Screw, carriage	2
42	140016	Washer, lock	2
43	059 650 595	Nut, hex	2
44	621 052 000	Plate, battery	1

DRIVE GROUP

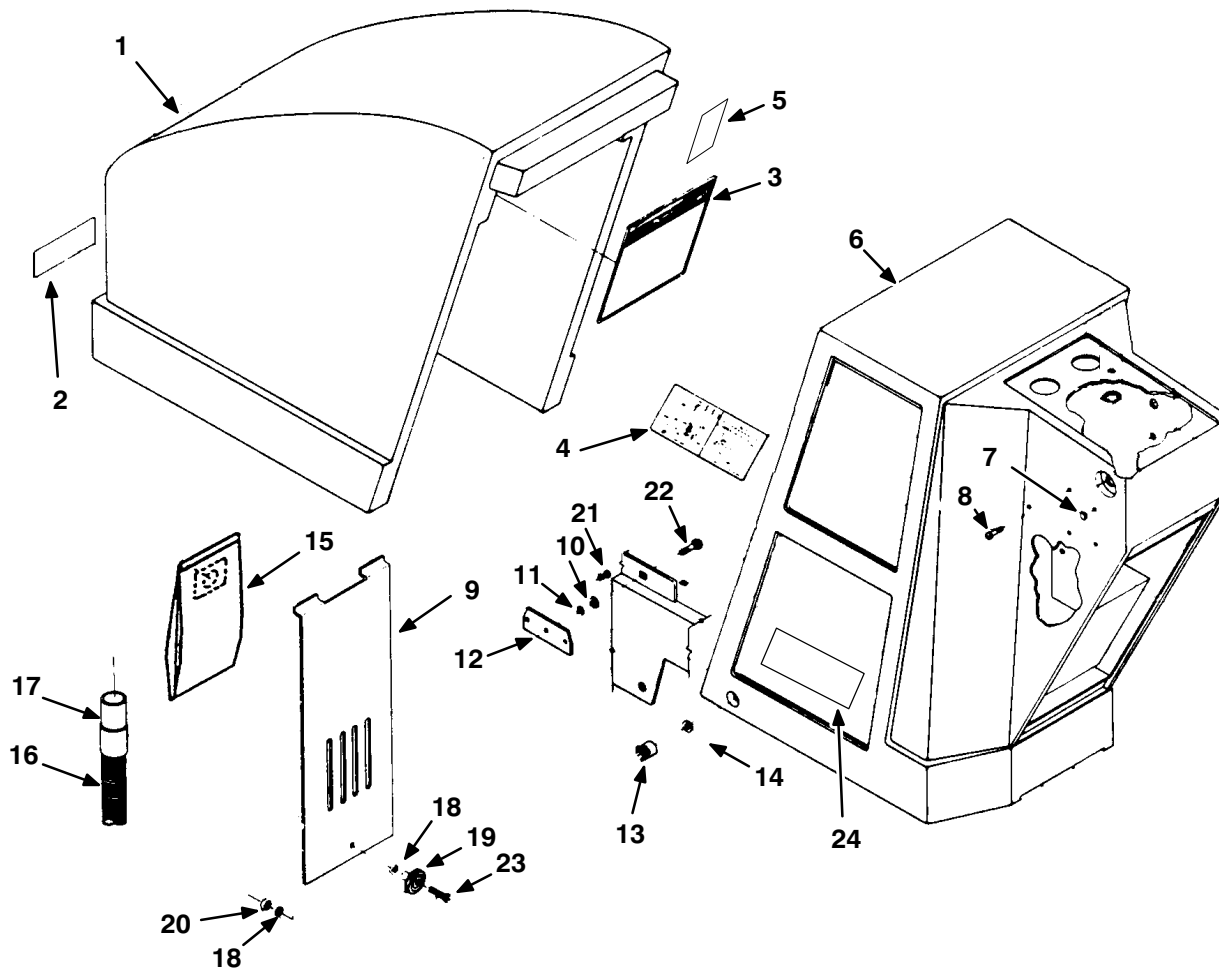


DRIVE GROUP

Ref.	Part No.	Description	Qty.
▽ 1	069 767 082	Wheel	1
▲ 2	602 171 000	Washer thrust	4
▲ 3	069 767 004	Spanner, bushing	2
▲ 4	602 014 000	Grease retainer	2
▲ 5	602 013 000	Bearing, wheel	2
6	069 767 003	Wheel	1
7	069 767 002	Bracket, wheel mnt.	2
8	069 760 082	Washer, flat	2
9	069 764 157	Nut, hex lock	2
10	621 237 000	Screw, hex hd.	2
11	069 767 008	Sprocket	1
12	602 011 000	Screw, set	2
13	069 767 011	Chain	1
14	621 238 000	Screw, hex hd.	1
15	069 767 007	Sprocket	1
16	069 767 005	Spacer, wheel	1
17	140501	Nut, hex	4
18	140016	Washer, lock	4
19	069 767 010	Motor, drive	1
20	602 130 000	Motor brush (set/2)	1
21	069 767 006	Spacer, sprock. mnt.	4
22	069 767 161	Support, wheel mnt.	1
23	579 212	Screw, hex hd.	4
	621 311 000	Service kit, whl shims	1
24	140546	Nut,Lock	4
25	621 311 000	Shim, wheel	1
26	579 210	Washer, flat	5
27	578 728	Washer, lock	9
28	200 031 438	Screw, hex hd.	2
29	14880.5	Washer	4

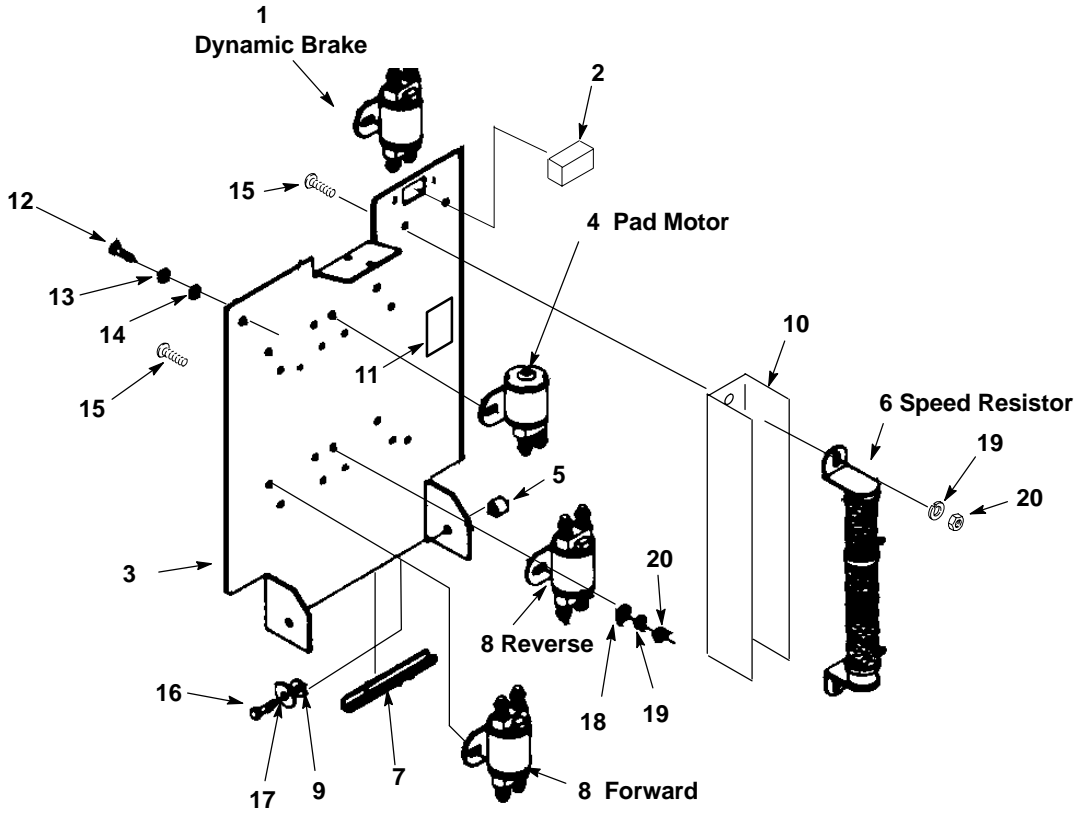
PARTS LIST

COVER GROUP



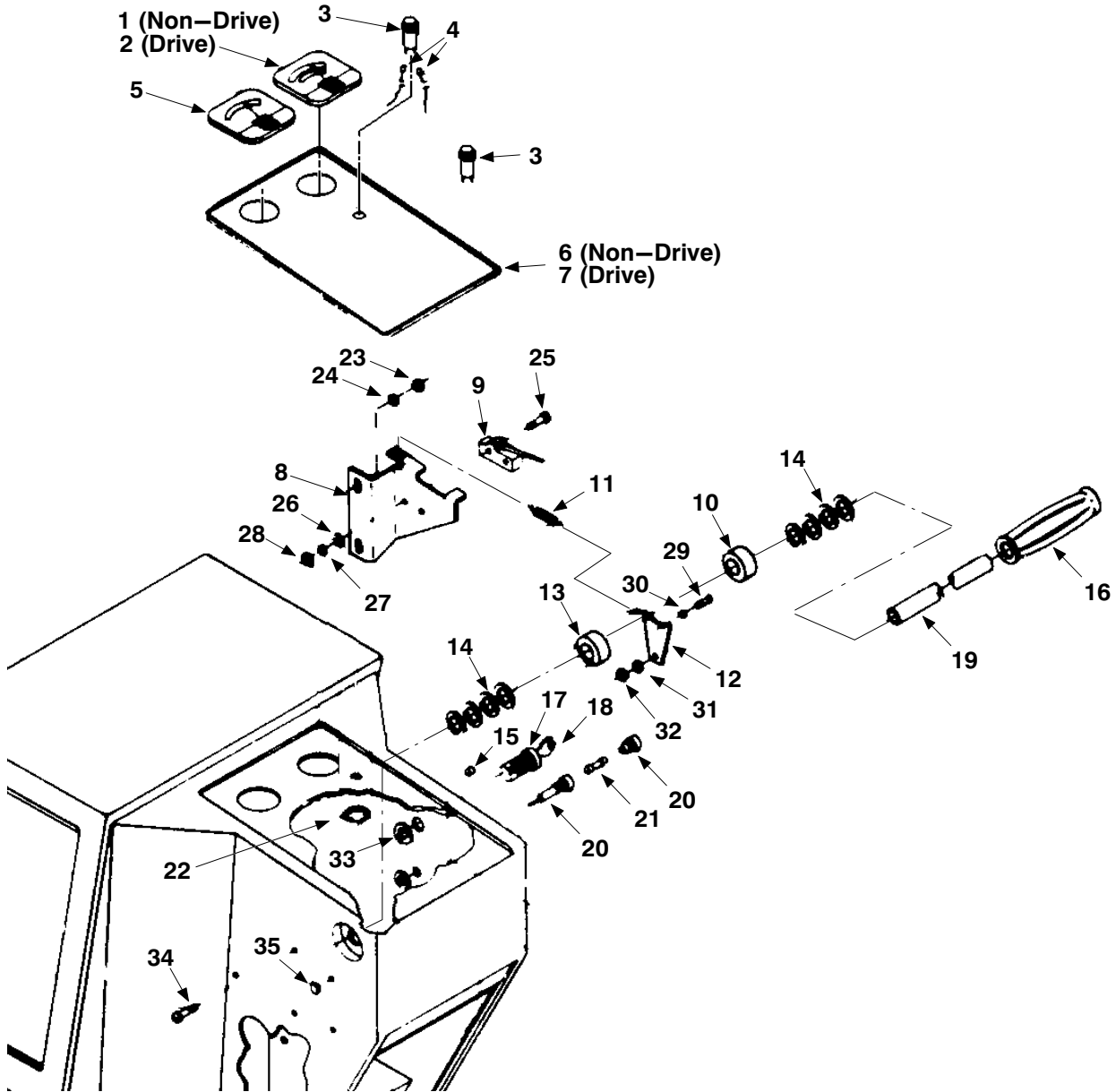
Ref.	Part No.	Description	Qty.
1	608374	Hood, front, Green	1
2	608186	Decal, Nobles	1
3	069 767 135	Decal, maint.	1
4	069 767 074	Decal, wire (non-drive model)	1
	069 767 119	Decal, wire (drive model)	1
5	069 780 017	Decal, Caution Charge	1
6	608372	Shroud, rear, Green	1
7	130164	Plug, button	3
8	069 764 060	Screw, truss hd	2
9	069 767 179	Door, vac compart.	1
10	14880.5	Washer, plain	2
11	621 325 000	Retainer, e ring	2
12	069 767 096	Stiffener, r. shroud	2
13	602 074 000	Nut, wing, shroud	2
14	14880.5	Washer, plain	2
15	039 707 079	Bag, Vacuum (10pcs)	1
16	069 767 187	Hose, dust control	1
17	069 767 189	Cuff, dust control	1
18	602 139 000	Washer, flat, nylon	2
19	578439	Knob	1
20	579028	Nut, Hex	1
21	200058432	Screw	4
22	602068000	Screw, Carriage	2
23	200031441	Screw	1
24	608375	Decal, "BR-2500"	2
	608377	Decal, "BR-2250"	2

COMPONENT PANEL GROUP



Ref.	Part No.	Description	Qty.
1	069 760 440	Contactora, SPDT, 100A	1
2	621 297 000	Meter, Hour (Option)	1
3	069 767 033	Panel, Electrical	1
4	621 381 000	Contactora, 200A, Pad Motor	1
5	019 686 055	Spacer, Nylon	2
6	069 764 063	Resistor, Speed (drive model)	1
7	069 767 121	Edging, 8" L	11
8	069 760 440	Contactora, SPDT, 100A	2
9	630446	Washer, Nylon	2
10	602 203 000	Heat shield	1
11	602 202 000	Decal, Caution HOT	1
12	200 031 433	Screw, M06x10	2
13	578728	Washer, Lock, Spg.	2
14	579210	Washer	2
15	069 767 164	Screw, Carriage, .25-20x.5"	10
16	200 031 438	Screw, M06 x 20	2
17	579 210	Washer, Flat, 6.4 ID	2
18	200 303 019	Washer, Flat, M08	10
19	140016	Washer, Lock, SPG.	10
20	059 650 595	Nut, Hex, 1/4-20	10

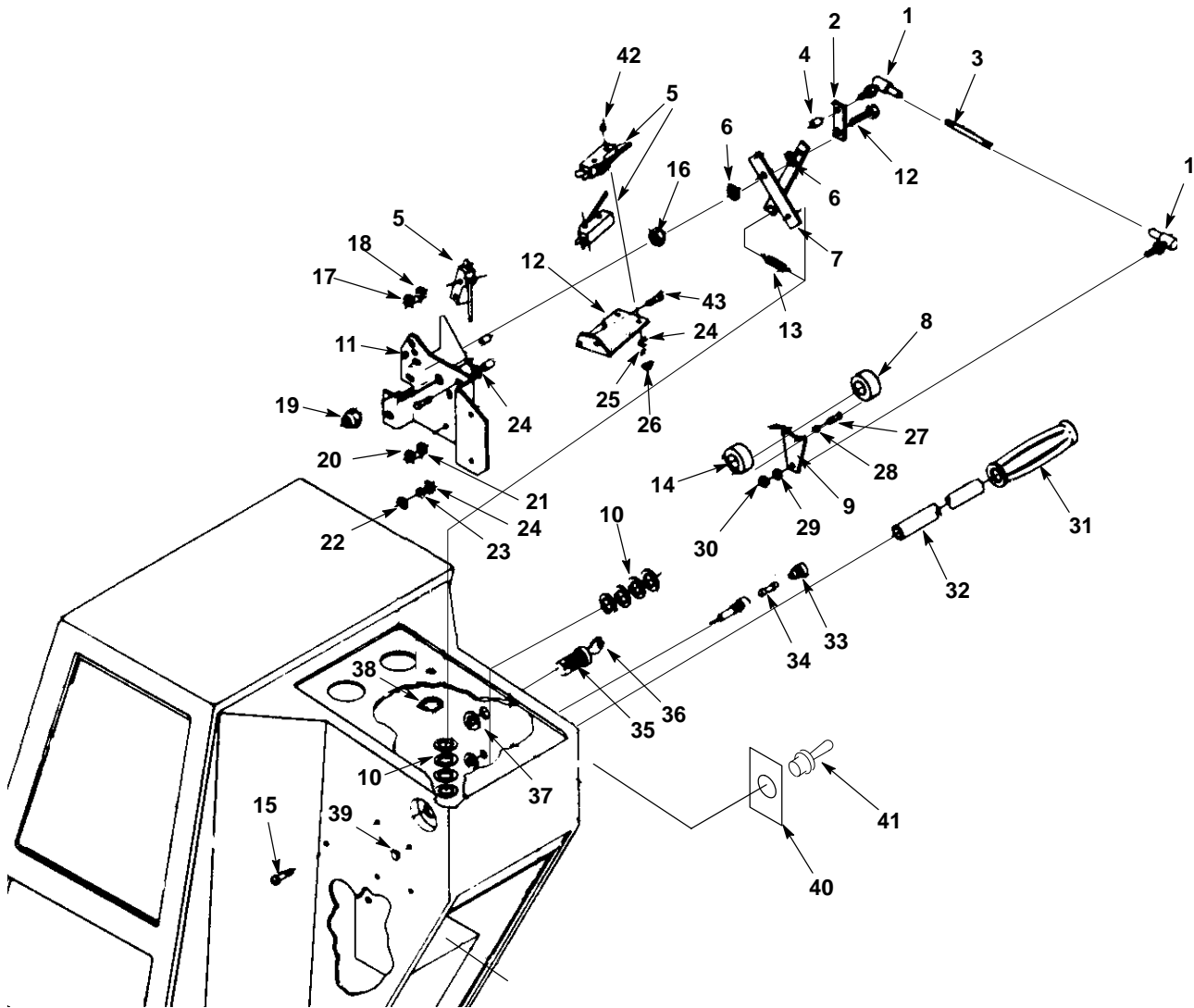
INSTRUMENT PANEL GROUP



INSTRUMENT PANEL GROUP

Ref.	Part No.	Description	Qty.
1	602235	Gauge, amp (non-drive model)	1
2	602235	Gauge, amp (drive model)	1
3	626114	Pilot light	1
4	602 050 000	Wire assy	2
5	610026	Meter, Battery	1
6	600345	Decal, console (non-drive model)	1
7	600346	Decal, console (drive model)	1
8	069 767 055	Bracket, switch	1
9	069 764 009	Switch, snap	1
10	630186	Collar, shaft	1
11	069 764 069	Spring	1
12	069 767 026	Plate	1
13	069 764 005	Collar, swtch.actuator	1
14	069 760 582	Washer, nylon	8
15	N/A	Tab, key switch	2
16	200823	Grip, handle bar	2
17	612471	Switch, key lock	1
18	069 762 236	Key	1
	621 437 000	Bracket, key Switch	1
19	069 764 062	Bar, Handle	1
20	578418	Fuse holder	1
21	069 760 639	Fuse	1
22	602 140 000	Washer, retention	1
23	140506	Nut	1
24	140015	Washer	1
25	069 764 002	Screw	2
26	069 764 053	Washer, flat	2
27	140023	Washer, lock	2
28	200 102 014	Nut, Hex	2
29	069 764 190	Screw	2
30	200 351 012	Washer	2
31	069 762 005	Washer, lock	1
32	575380	Nut	1
33	069 762 306	Washer, lock	1
34	069 764 060	Screw	3
35	130164	Plug, dome	3

SPEED CONTROL GROUP (DRIVE MODEL)

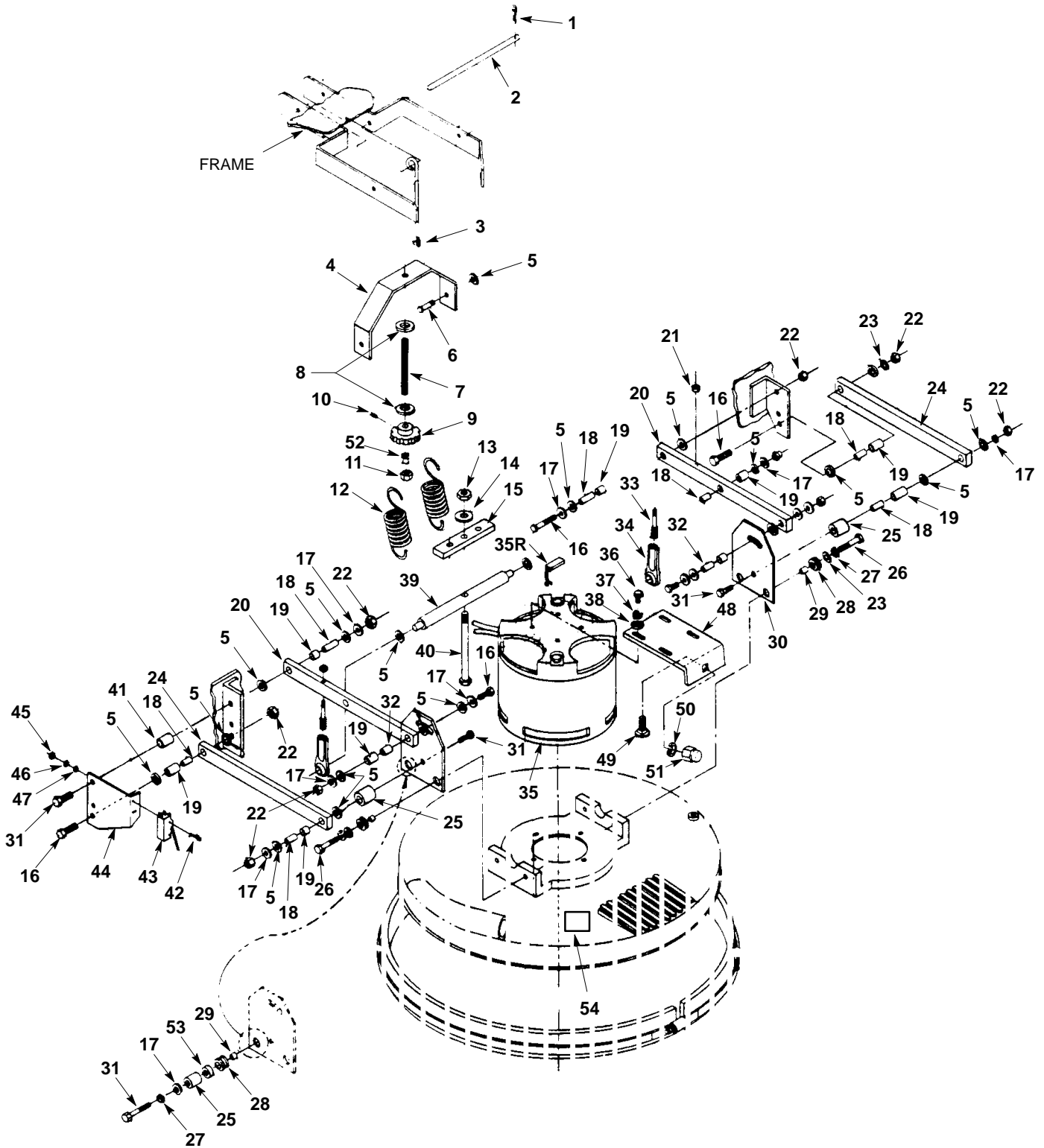


SPEED CONTROL GROUP (DRIVE MODEL)

Ref.	Part No.	Description	Qty.
1	069 767 070	Ball joint	2
2	621 059 000	Strip arm	1
3	069 767 058	Rod, spd. ctrl.	1
4	621 440 000	Spacer, nylon	3
5	069 764 009	Switch, snap	1
6	630446	Washer, nylon	3
7	069 767 066	Link, Scissor	2
8	630186	Collar, shaft	1
9	069 767 026	Plate	1
10	069 760 582	Washer, nylon	8
11	621 058 000	Bracket, spd./dir.ctrl	1
12	069 767 057	Bracket, switch	1
13	069 764 069	Spring	1
14	069 764 005	Collar, swtch.actuator	1
15	069 764 060	Screw, truss hd.	3
16	200160 017	Nut	1
17	140015	Washer, Lock	1
18	140506	Nut	1
19	200 160 017	Nut, lock	1
20	140506	Nut	3
21	140015	Washer	1
22	200 102 014	Nut	2
23	140023	Washer, Lock	2
24	069 764 053	Washer, flat	2
25	069 764 054	Washer, Lock	2
26	069 762 159	Nut	2
27	069 764 190	Screw	2
28	200 351 012	Washer, lock	2
29	069 762 005	Washer, lock	1
30	575380	Nut	2
31	590 002 000	Grip, handle	2
32	069 764 062	Bar, Handle	1
33	578418	Holder, fuse	1
34	069 760 639	Fuse, 15A, 32V	1
35	612471	Switch, key lock	1
36	621 437 000	Bracket, key Switch	1
37	069 762 236	Key	1
38	069 762 306	Washer, lock	1
39	602 140 000	Washer, retention	1
39	130164	Plug, button	1
40	602 212 000	Decal, speed	1
41	130728	Switch, Toggle speed	1
42	069 764 002	Screw	6
43	579259	Screw	2

PARTS LIST

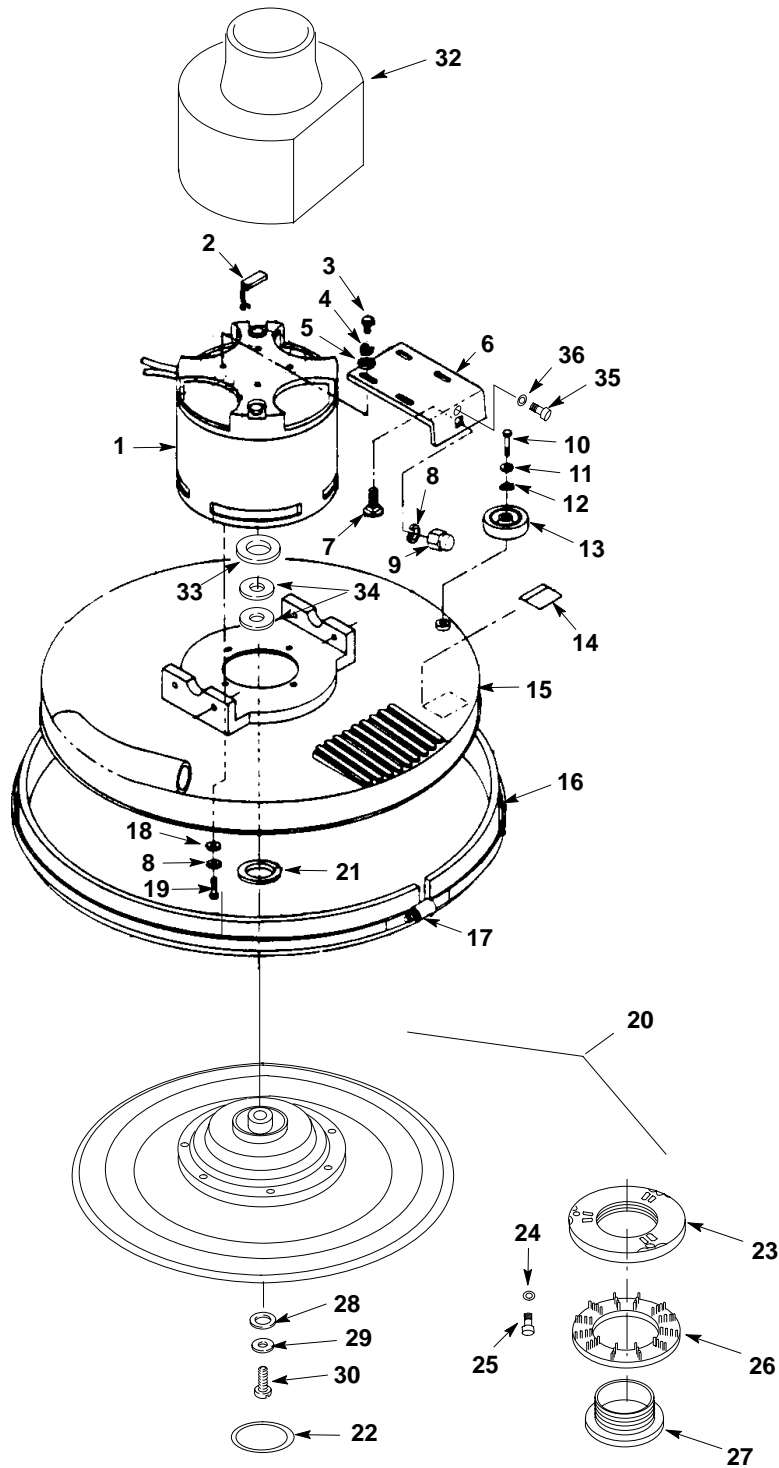
PAD SHROUD LINKAGE GROUP



PAD SHROUD LINKAGE GROUP

Ref.	Part No.	Description	Qty.
1	578421	Pln, Cotter	2
2	602 009 000	Pin, Headless	1
3	602 027 000	Bolt, Eye, .38-16x10.00	1
4	621 178 000	Bracket, spring supp.	1
5	630447	Washer, Nylon, 12.7x25.4	22
6	200 031 494	Screw, Hex, M08x30	2
7	621 446	Spring, pressure adj.	1
8	579 144	Washer, Flat	2
9	602 029 000	Knob, adjusting	1
10	602 046 000	Screw, set, nylon	1
11	140515	Nut, Hex Lock, .38-18	1
12	069 767 128	Spring, ext.	2
13	069 767 162	Nut, Hex, 1/2-20	1
14	069 760 091	Washer, Plain, .5	1
15	069 767 148	Plate, spring adj.	1
16	200 031 496	Screw, Hex M08x35	5
17	14880.5	Washer, Plain, .31	11
18	069 760 417	Sleeve, Bearing	8
19	069 760 416	Bearing, Journal, .5	10
20	069 767 012	Link, Suspension, Upper	2
21	579 028	Nut, Hex Lock, M06	2
22	200 160 017	Nut, Hex Lock, M08	10
23	14880.5	Washer, Plain, .31	4
24	069 767 013	Link, Suspension, Lower	2
25	069 767 163	Spacer, 1.0x.75	4
26	200 031 494	Screw, Hex, M08x30	2
27	575 533 000	Washer, Lock, Spg.	4
28	602 055 000	Grommet	4
29	602 056 000	Spacer	4
30	069 767 137	Bracket,	1
31	200 031 501	Screw, Hex	5
32	069 767 177	Sleeve, Bearing	2
33	069 767 171	Mounting, Rod End	2
34	069 767 091	Rod End	2
35	621445	Motor, 36 VDC, 3 HP	1
35R	621478	Brushes, Motor	4
36	200 609 438	Screw, M6 x 20, HXHDCP	4
37	578728	Washer, lock	4
38	019 680 127	Washer, Flat, Wheel Axle	4
39	621 177 000	Cross Arm, Head Lift	1
40	069 767 158	Screw, Hex, 1/2-20x6.0	1
41	621 207 000	Spacer	1
42	069 764 002	Screw, Hex, #6-32x1.0	2
43	069 764 009	Switch, Snap, 25A	1
44	069 767 056	Bracket, Switch	1
45	069 762 159	Nut, Hex, #6-32	2
46	069 764 054	Washer, Lock, #06,	2
47	069 764 053	Washer, Plain, #06,	2
48	621 186 000	Bracket, Head Stop	1
49	602 079 000	Carriage Bolt, .38-16x.63"	1
50	140017	Washer, Lock, .38	5
51	602 080 000	Nut, Acorn, .38-16	1
52	140153	Spacer, Knob	1
53	140015	Washer, Flat	3
54	602 063 000	Decal, Caution Pad Adj.	1

PAD DRIVER GROUP

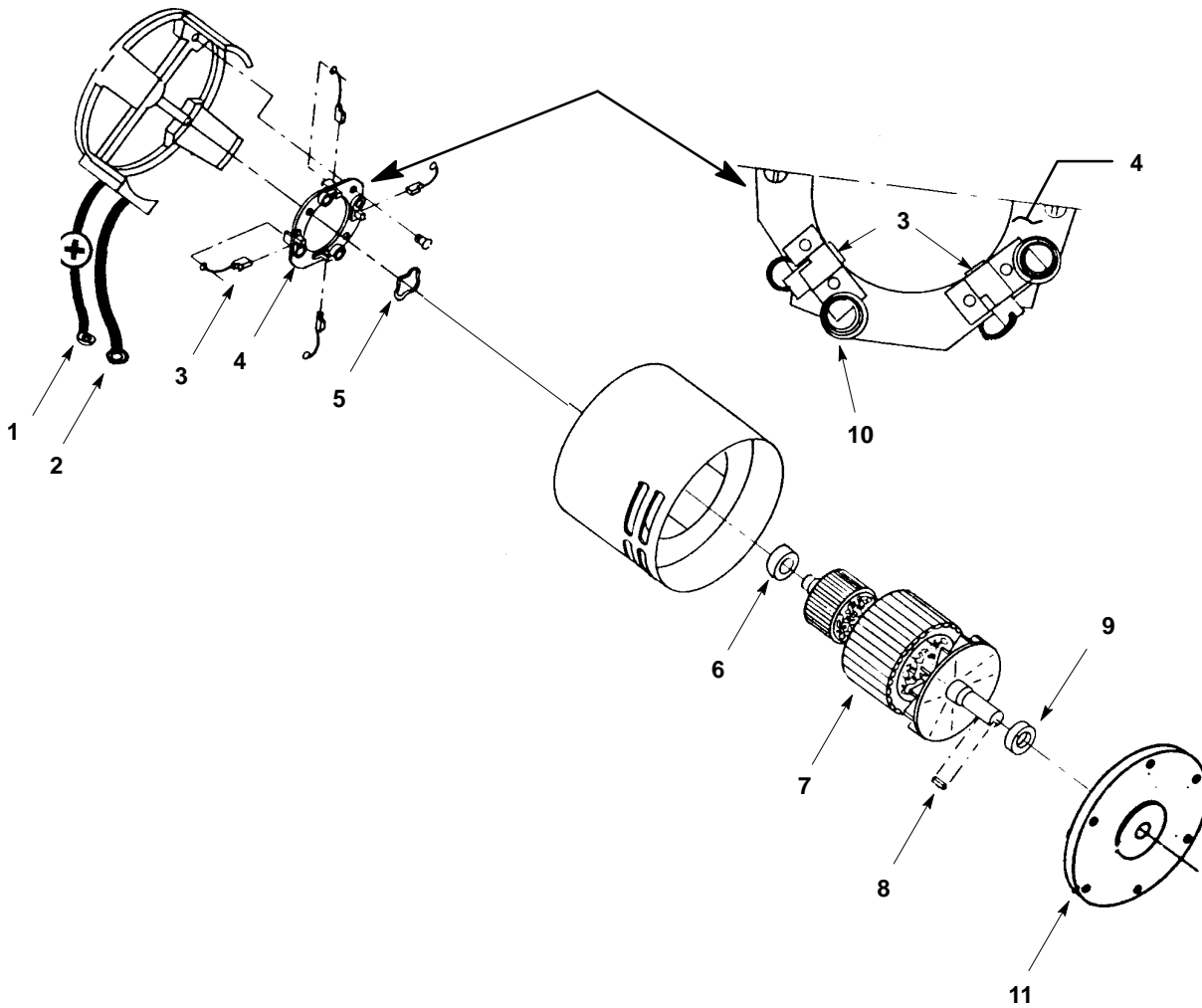


PAD DRIVER GROUP

Ref.	Part No.	Description	Qty.
1	621445	Motor, 36 VDC, 3 HP (120V)	1
2	621478	Motor brush (set/4)	4
3	200 609 438	Screw, M6 x 20, HXHDCP	4
4	578728	Washer, lock, SPG, 6.1MM	4
5	019 680 127	Washer, Flat, Wheel Axle	4
6	621 186 000	Bracket, Head Stop	1
7	602 079 000	Carriage Bolt, .38-16x.63"	1
8	140017	Washer, Lock, .38	5
9	602 080 000	Nut, Acorn, .38-16	1
10	069 767 190	Screw, M08x4	1
11	069 760 082	Washer, Plain, .25	1
12	602 035 000	Washer, Wave	1
13	630450	Wheel, Rubber	1
14	602 040 000	Decal, Caution Hand & Feet	1
15	069 767 020	Head, Drive Block	1
621475	621474	Asm., Skirt	1
17	602 044 000	Fastener, Adjusting Band	1
	069 767 094	Band, pad head	1
	630613	Skid Strip, 1.524M (Not Shown)	1
18	140013	Washer, Plain	4
19	019 686 107	Screw, Hex, .38-16x.75	4
∇20	621 340 000	Asm., Driver, Flexible Disc	1
▲21	069 764 512	Ring, Water Containment	1
▲22	572 061 000	O-Ring, Drive Block Hub	1
▲23	621 326 000	Centerlock, Stationary	1
▲24	069 760 097	Washer	3
▲25	186 002 062	Screw, Slotted, #8-32	3
▲26	572 084 000	Ring, Pad Lock	1
▲27	621 327 000	Centerlock, Removeable	1
28	069 764 631	Washer, Flat	3
29	140015	Washer, Lock, .31	1
30	602 173 000	Screw, Hex, .31-24x1.0	1
32	100834	Cover, Motor	1
33	231059	Washer,.786x1.5x.3	1
34	621471	Spacer	2
35	200070432	Screw, Stop	1
36	140016	Washer, Lock	1

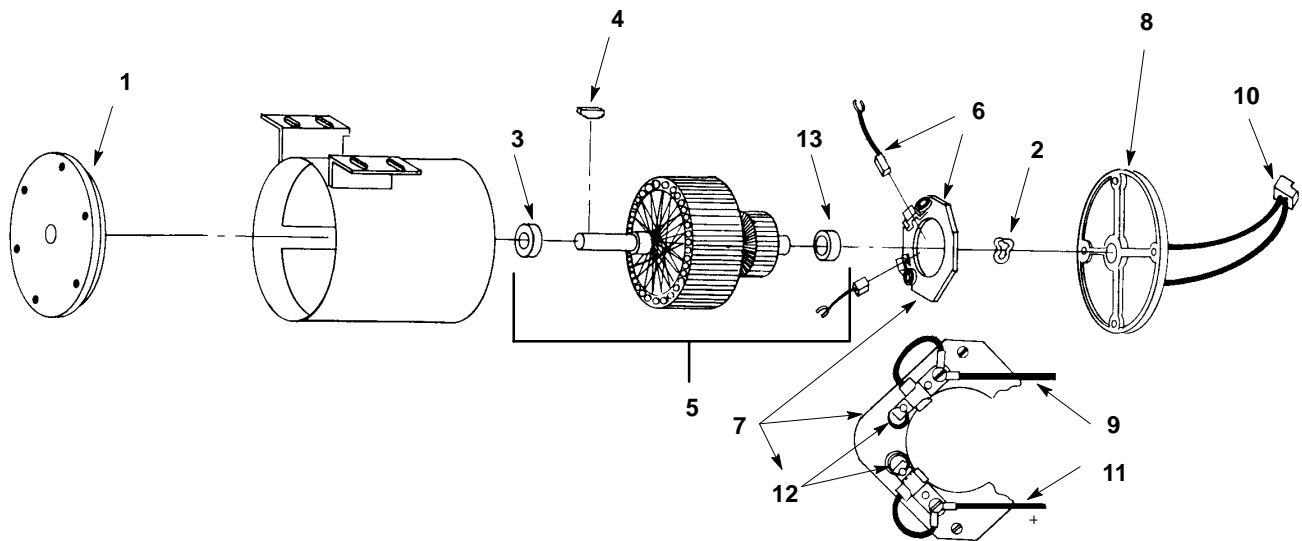
PARTS LIST

PAD MOTOR BREAKDOWN



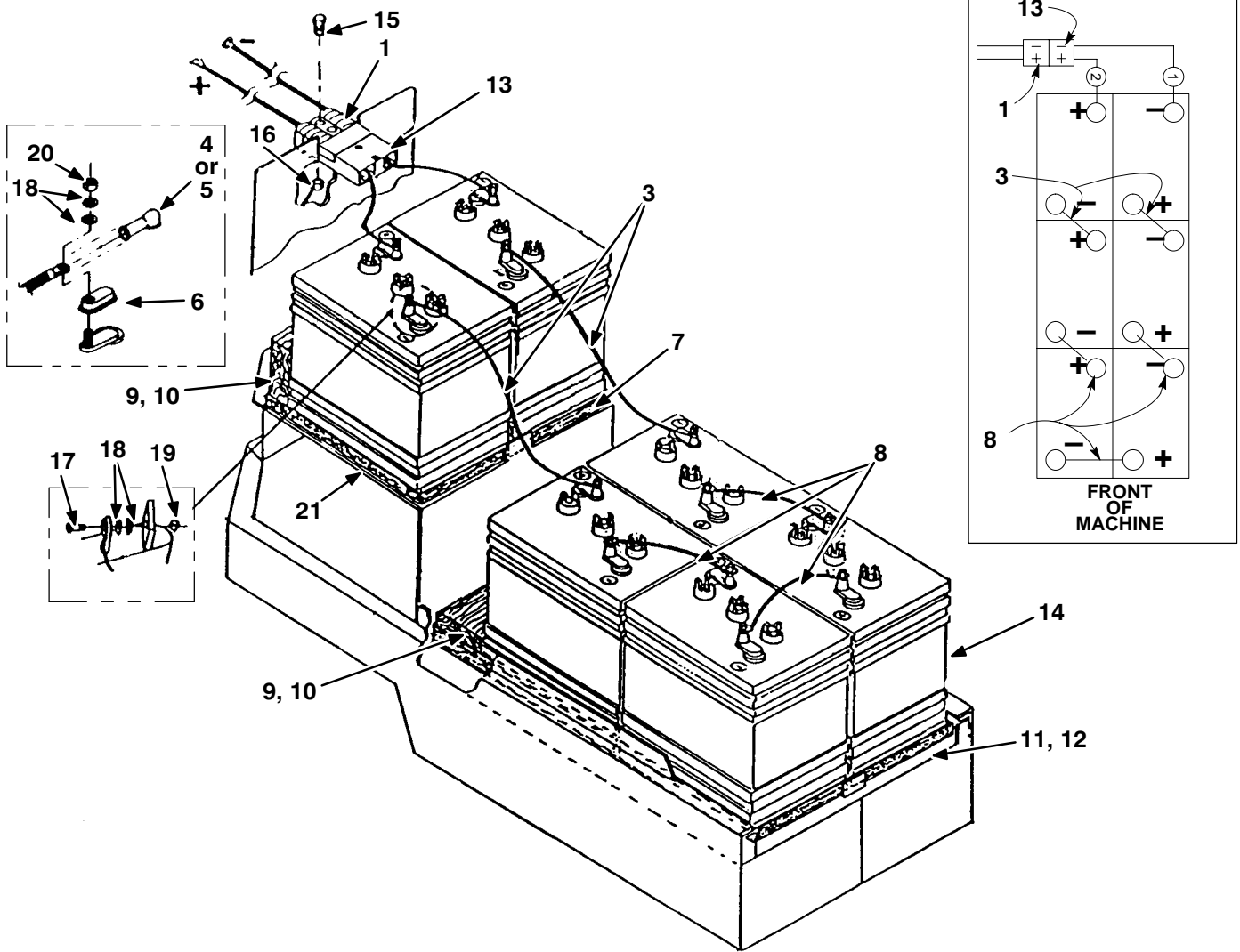
Ref.	Part No.	Description	Qty.
	621445	Motor, 36V, 3hp (Complete)	1
1	621 362 000	Asm., Lead (Positive)	1
2	621 362 000	Asm., Lead (Negative)	1
3	621478	Asm., Brush (Set of 4)	4
4	621 300 000	Asm., Brush Board	1
5	602 087 000	Washer, Helical	1
6	602 088 000	Bearing	1
7	190313	Asm., Armature	1
8	602 010 000	Key, Shaft	1
9	140124	Bearing	1
10	621 307 000	Spring, Brush (Set of 4)	4
11	019 683 016	Endbell, Motor	1

DRIVE MOTOR BREAKDOWN



Ref.	Part No.	Description	Qty.
1	069 767 010	Motor, .15 HP (Complete)	1
	602 086 000	Bracket, B.E.	1
2	602 087 000	Washer, Helical	1
3	602 088 000	Bearing	1
4	069 764 176	Key, Wooddrif	1
5	602 090 000	Armature	1
6	602 130 000	Asm., Brush	2
7	602 091 000	Asm., Brush Board	1
8	602 092 000	Bracket, Commutator	1
9	602 093 000	Asm., Lead Neg	1
10	602 094 000	Connector, Housing	1
11	602 095 000	Asm., Lead, Positive	1
12	602 131 000	Spring, Brush (Set of 2)	2
13	602 088 000	Bearing	1

BATTERY GROUP

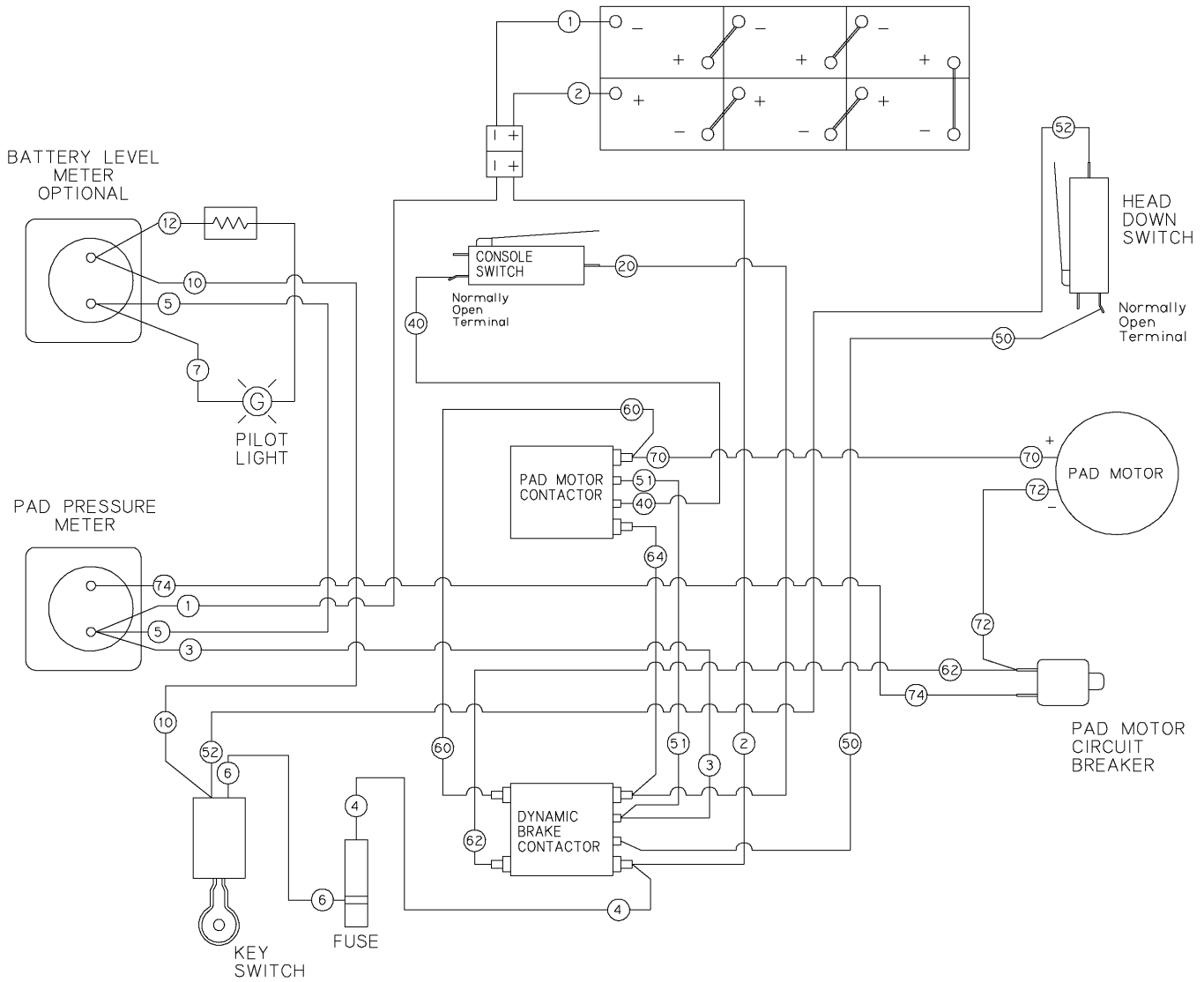


BATTERY CABLES GROUP

Ref.	Part No.	Description	Qty.
1	069 767 101	Wire harness, battery	1
∇ 2	469 767 951	Kit, battery cables	1
▲ 3	611 117 000	Cable, Battery	2
▲ 4	611 222	Boot, red	6
▲ 5	611 221	Boot, black	6
▲ 6	611 223	Terminal, cover	12
▲ 7	069 767 088	Battery tray, upper	1
▲ 8	611 116 000	Cable, Battery	3
9	630375	Insert, battery Non-Drive	2
10	602 032 000	Insert, battery Drive	1
11	602 146 000	Plate, battery supp.	1
12	069 767 089	Battery tray, lower	1
13	602 015 000	Battery cable assy.	1
14	069 764 222	Battery, 6v. 240 Amp (non-drive model)	6
	069 760 654	Battery, 6v. 305 Amp (drive model)	6
▲ 15	200 031 444	Screw	2
▲ 16	579028	Nut	2
▲ 17	200 031 488	Screw	12
▲ 18	200 394 019	Washer	24
▲ 19	200 102 017	Nut	12
▲ 20	019 201 034	Nut	12
21	621 052 000	Plate, battery	1

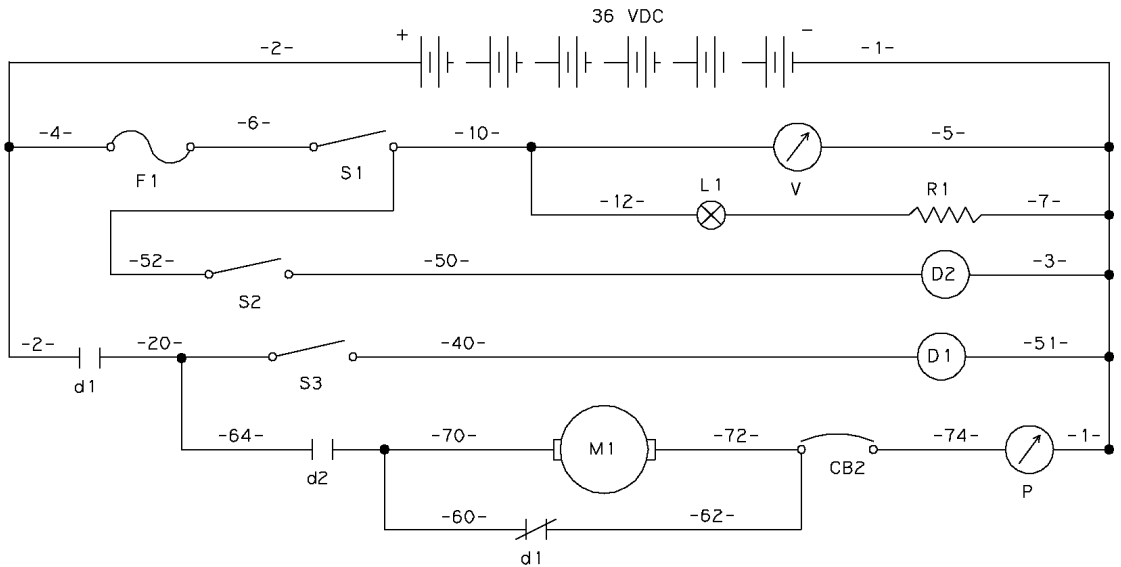
ELECTRICAL DIAGRAMS

NON-DRIVE MODEL WIRE DIAGRAM

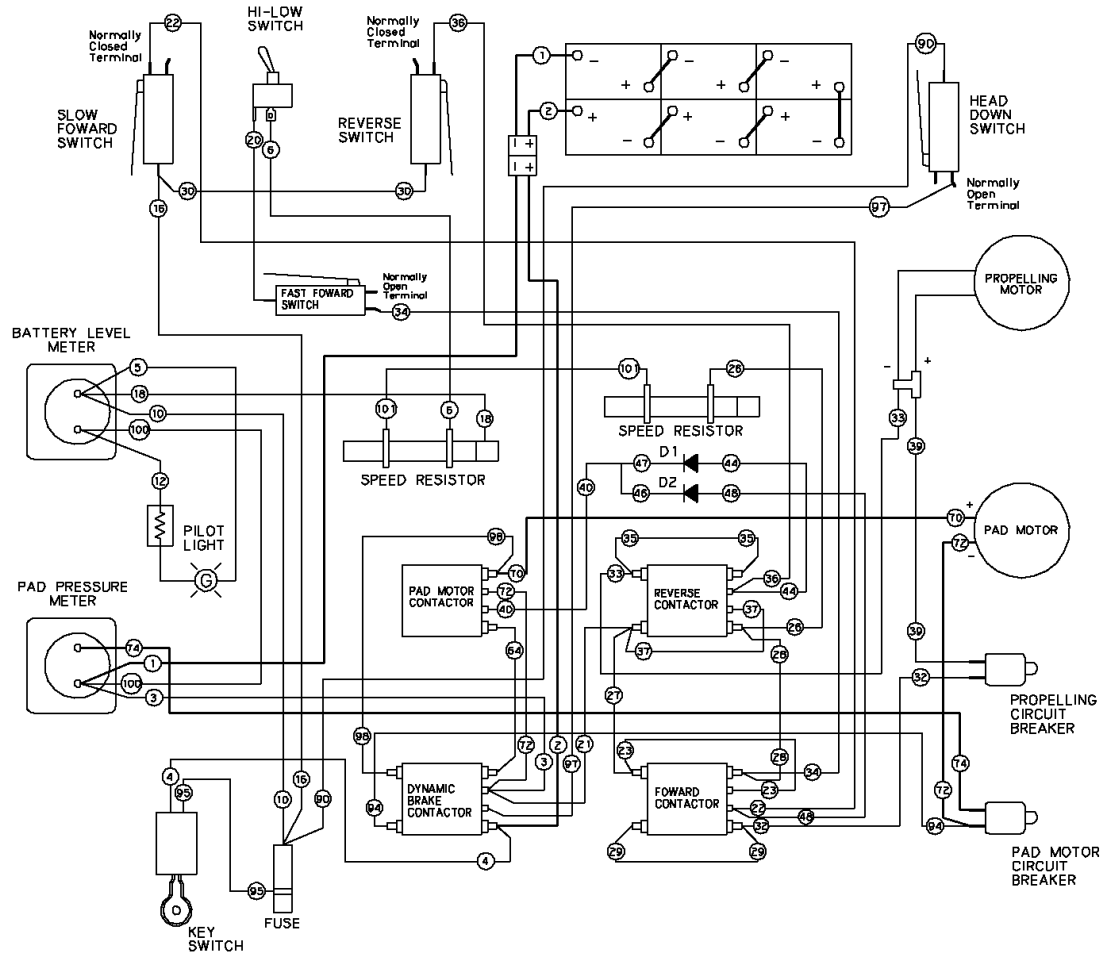


NON-DRIVE MODEL LADDER DIAGRAM

REF	LEGEND
S1 =	Switch, Key
S2 =	Switch, Head down
S3 =	Switch, console
CB-2 =	Circuit Breaker 15A
D1 =	Relay, Brake
D2 =	Relay, Main pad
d1 =	Contact, brake relay
d2 =	Contact, pad relay
M1 =	Motor, pad
L1 =	Light, pilot
P =	Meter, pad press.
F1 =	Fuse
V =	Volt Meter



DRIVE MODEL WIRE DIAGRAM



DRIVE MODEL LADDER DIAGRAM

