

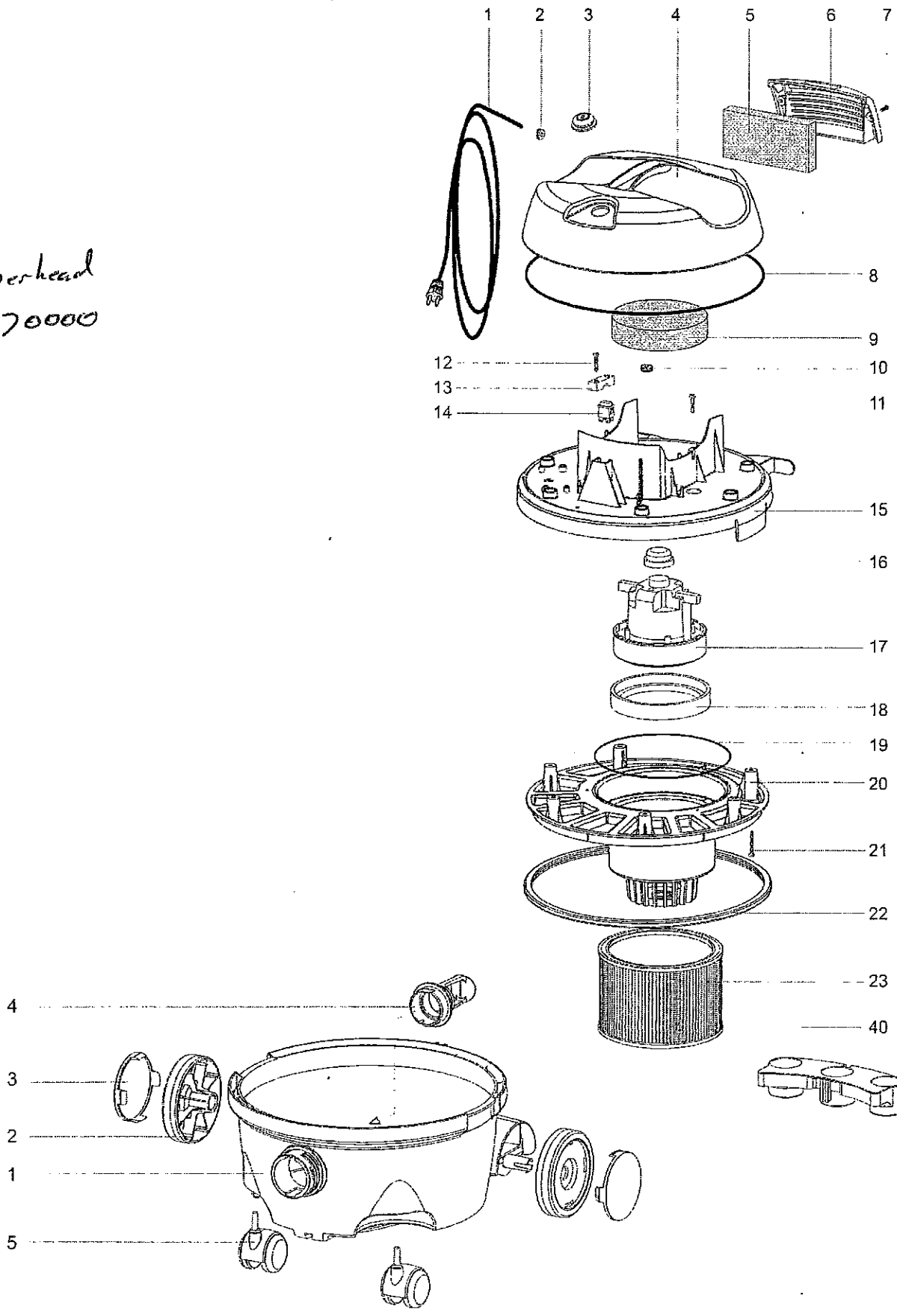
Eagle Power

LEO

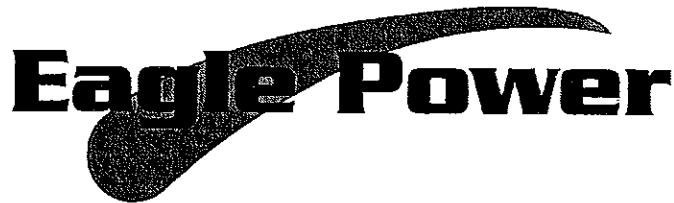


PARTS MANUAL

Powerhead
\$70000



ITEM	PART #	DESCRIPTION	QTY.
1	S820059/FF4,8	CORD, POWER 110	1
2	S87855	GROMMET	1
3	S87813	BOOT, SWITCH	1
4	S87815AUG65	COVER, LEO TOP	1
5	S87898	FILTER, EXHAUST	1
6	S87819AUG65	COVER, EXHAUST FILTER	1
7	S82680	SCREW, M4 X 15	2
8	S87900	GASKET, TOP COVER	1
9	S820066	FILTER, MOTOR	1
10	S87855	GROMMET	1
11	S81006	SCREW, 5 X 20	3
12	S81006	SCREW, 5 X 20	1
13	S80139	CLAMP, CORD	1
14	S86013/4,8	SWITCH	1
15	S87816AUG52	COVER, LEO MID	1
16	S87502	CAP, MOTOR CAP	1
17	S803888TP	MOTOR, VAC 120V 60HZ	1
18	S87890	GASKET, MOTOR	1
19	S87891	GASKET, 17 X 2.62	1
20	S87817	BASE, LEO	1
21	S81026	SCREW, M5 X 30	6
22	S87799	GASKET, BASE	1
23	S77847	FILTER, STANDARD	1
	S77934	FILTER, HEPA, OPTIONAL <i>.2 micro</i>	
*	S87953	ELECTRIC KIT	
40	S707814G65	TOOL HOLDER	1
TANK ASSEMBLY			
1	S87818G65	TANK	1
2	S86043/G	WHEEL, REAR	2
3	S86044G52	CAP, HUB	2
4	S87796	INLET	1
5	S87885	CASTER	2
ACCESSORIES			
	S70617-G52	CREVISE TOOL	
	S70616-G52	UPHOLSTERY TOOL	
	S70004-G52	ROUND BRUSH	
	S77993-G52	HOSE <i>S77993G-52</i>	
	S76158-G52	CURVED PLASTIC WAND	
	S76240-G52	ALUMINUM PLASTIC WAND	
	S77882	BAG	
	S70632-G52	CARPET TOOL, BENT	



Warranty Policy

Limited Warranty

Eagle Power Products (EPP) warrants new cleaning equipment against defects in material and workmanship under normal use and service to the original purchaser as detailed below.

10 Years

Subject to the conditions stated below, EPP warrants polyethylene tanks and housings to be free from defects in materials and workmanship for a period of ten years.

3 Years

Subject to the conditions stated below, EPP warrants all automatic scrubber components to be free from defects in materials and workmanship for a 3-year period. Parts replaced or repaired are warranted for the remainder of the original warranty period.

1 Year

Subject to the conditions stated below, EPP warrants all other cleaning equipment components to be free from defects in materials and workmanship for a 1-year period. Parts replaced or repaired are warranted for the remainder of the original warranty period. Batteries are prorated for one year.

EPP will furnish and charge for replacement parts, including transportation, to the original owner through an EPP authorized service center. If the part is returned within 30 days and is found defective, the owner will be credited for the cost of the replacement part including shipping and handling.

Labor charges are covered for one year from the date of purchase if provided by an authorized EPP service center. Travel is covered for 90 days for battery operated equipment only.

Wear items exempt from warranty include belts, carbon brushes, power cords, wheels, pad drivers, clutch plates, brushes, pads, handle grips, filters, screens, throttle cables, and squeagees.

This warranty shall not apply to failures caused by misuse or abuse, improper maintenance as stated in the operation manuals, use of unauthorized repair parts, repairs by other than an EPP authorized service center, and damage in transit.

EPP disclaims and denies any liability for any direct, indirect, special incidental or consequential damage which may be suffered as a result of sale, delivery, servicing, use, loss of any product, downtime, labor, freight, or other charges not expressly included herein.

Date Purchased: _____

Model Number: _____

Serial Number: _____

Please be sure to record this information. This information will be necessary for future warranty claims.



1174 Northland Drive Mendota Heights, MN 55120
651.686.5399 Fax 651.686.5695
www.eaglepower.com

Eagle Power Products Sales and Service Provided by: