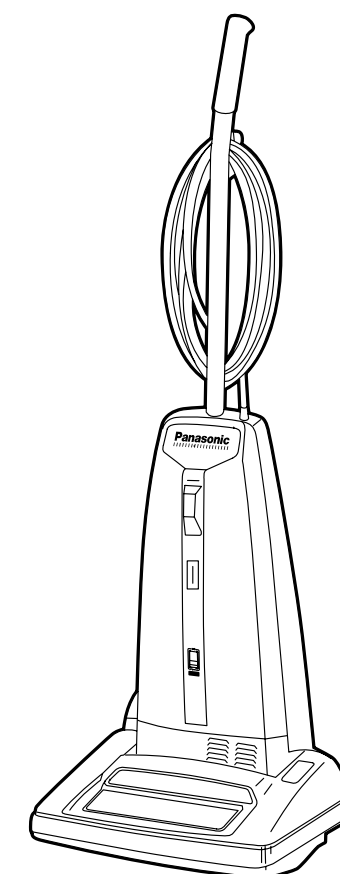


Service Manual

Vacuum Cleaner

MC-V6603 01



■ SPECIFICATIONS

Model	MC-V6603 01
Power Source	AC 120V (60 Hz)
Power Consumption	10.0 Amps
Cord Length	50 Ft.
Vac Gauge	Yes
Headlight	No
Suction Control	Yes

Specifications are subject to change without notice for further improvement.

PANASONIC HOME & COMMERCIAL PRODUCTS
COMPANY, DIVISION OF MATSUSHITA
ELECTRIC CORPORATION OF AMERICA

One Panasonic Way
Secaucus, New Jersey 07094

World Wide Web Address
<http://www.panasonic.com>

Printed in U.S.A.

PANASONIC SALES COMPANY, DIVISION
OF MATSUSHITA ELECTRIC OF
PUERTO RICO INC. ("PSC")

Ave. 65 de Infanteria, Km. 9.5
San Gabriel Industrial Park
Carolina, Puerto Rico 00985
Tel. (809) 750-4300 Fax (809) 768-2910

Panasonic®

2003 PANASONIC HOME AND COMMERCIAL PRODUCTS COMPANY,
DIVISION OF MATSUSHITA ELECTRIC CORPORATION OF AMERICA
All rights reserved. Unauthorized copying and distribution is a violation of law.



WARNING

This service information is designed for experienced repair technicians only and is not designed for use by the general public. It does not contain warnings or cautions to advise non-technical individuals of potential dangers in attempting to service a product. Products powered by electricity should be serviced or repaired only by experienced professional technicians. Any attempt to service or repair the product or products dealt with in this service information by anyone else could result in serious injury or death.

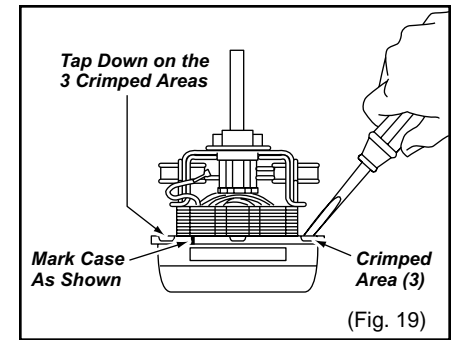
TABLE OF CONTENTS

SPECIFICATIONS	Front Cover
SCHEMATIC DIAGRAM	3
PICTORIAL DIAGRAM	3
EXPLODED VIEW (GENERAL PARTS).....	4
EXPLODED VIEW (NOZZLE HOUSING)	5
PARTS LIST (NOZZLE HOUSING).....	6
EXPLODED VIEW (AGITATOR ASSEMBLY).....	7
PARTS LIST (AGITATOR ASSEMBLY)	7
EXPLODED VIEW (DUST CONTAINER AND HANDLE).....	8
PARTS LIST (DUST CONTAINER AND HANDLE)	9
EXPLODED VIEW (MOTOR UNIT)	10
PARTS LIST (MOTOR UNIT).....	10
EXPLODED VIEW (PACKING MATERIALS)	11
PARTS LIST (PACKING MATERIALS).....	11
LOWER PLATE REMOVAL/INSTALLATION.....	12
AGITATOR ASSEMBLY REMOVAL/INSTALLATION	13
BELT REPLACEMENT	13
BRUSH REPLACEMENT	14
NOZZLE HOUSING REPLACEMENT	15
POWER CORD ON/OFF SWITCH REPLACEMENT	16
SUCTION INLET/HOSE REPLACEMENT	16
MOTOR REPLACEMENT.....	17
CARBON BRUSH REPLACEMENT	18
MOTOR FAN REPLACEMENT.....	19

MOTOR FAN REPLACEMENT

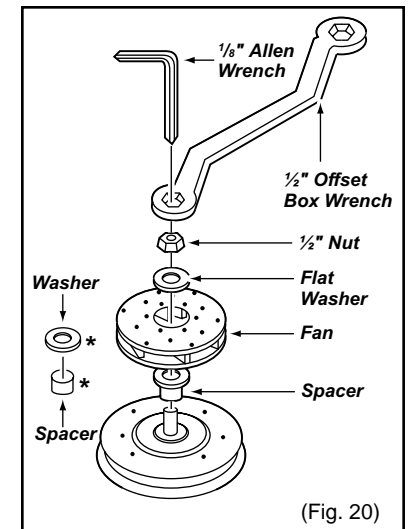
Removal

1. Mark the position of the fan case's location on the motor with a pencil, or score it with a sharp object before disassembly. This will aid you in reassembling the fan case, (Fig. 19).
2. The fan case has three (3) crimped sections on it to hold the case onto the motor. These will have to be straightened by using a pair of needle nose pliers and by tapping out on the crimp area with a flat blade screwdriver. Be sure and straighten all three (3) crimped areas, (Fig. 19). Remove the fan case from the motor unit.
3. Tools required to remove the fan from the shaft will be a 1/8 - inch Allen wrench, a 1/2 -inch offset box wrench, torque wrench, and a hammer.



NOTE: Be careful when handling the sheet metal parts as there could be sharp edges. Do not scratch or bend the motor shaft. Scratches will cause belt breakage during operation.

4. Place the 1/2 - inch box wrench over the 1/2 -inch hex nut that holds the fan onto the motor shaft, (Fig.20). While holding the wrench on the nut, place the 1/8 -inch Allen wrench into the end of the motor shaft and loosen the nut while holding the Allen wrench still. The nut will have to be turned clockwise as it is a left-hand thread. After removing the nut, remove the fan, (Fig. 20). There is a spacer left on the motor that is not required to be removed. If spacer is removed, reassemble per exploded view, (Fig. 22).

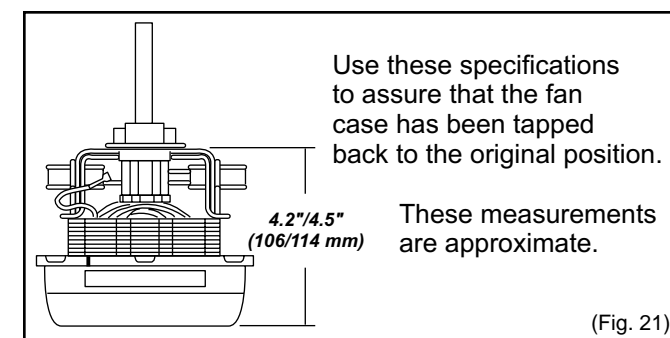
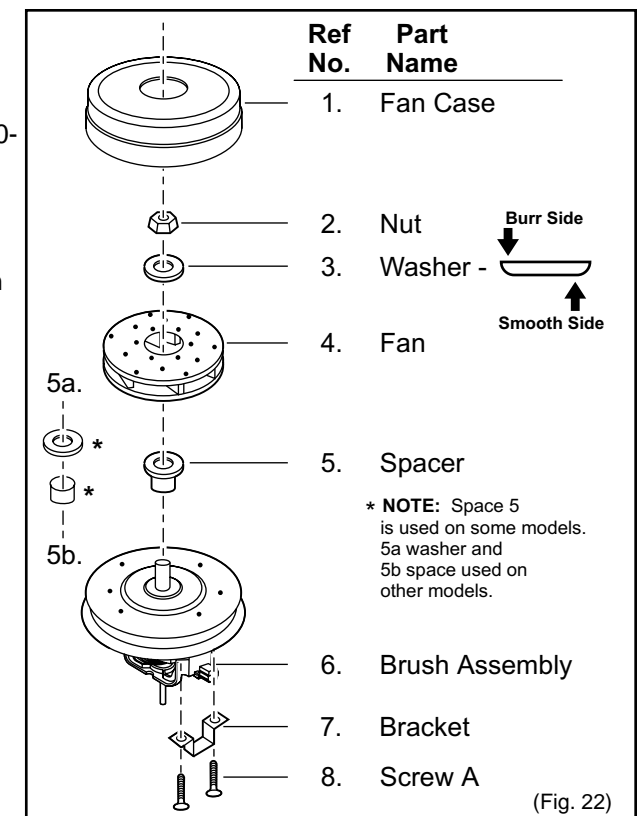


* Some models will have this washer and spacer.

Installation

1. Place the new fan onto the motor shaft, making sure that the spacer is still on the motor. The large diameter hole, approximately 1 1/8 inch, will be on the top of the fan as you install it.
2. Next install the flat washer with the burr side of the washer facing away from the fan, (Fig. 22). Screw the nut onto the motor shaft, turning it counterclockwise, left-hand threads, and torque to 20-30-inch pounds. Be sure to hold the motor shaft by placing the 1/8-inch allen wrench into the motor shaft end while torquing the nut, (Fig. 20).
3. Align your marks on the fan case as you put the fan case back on and tap around the case uniformly. Tap the three (3) crimped areas over and then use a flat blade screwdriver to recrimp them.
4. See (Fig. 21) for reassembly specifications.

EXPLODED VIEW



CARBON BRUSH REPLACEMENT

Removal and Installation

1. After removing the motor, see MOTOR REPLACEMENT, make sure that you have properly identified it. Note specifically that this motor is made in the U.S.A. as identified by the label on the side of the motor, or Made in U.S.A. stamped on the bottom.

2. Remove the amp terminals located on each brush end, (Fig. 17). Replace the brush assembly which should include the brush holder. Reinstall the amp terminals onto the new brush assembly. Complete brush change on one side before

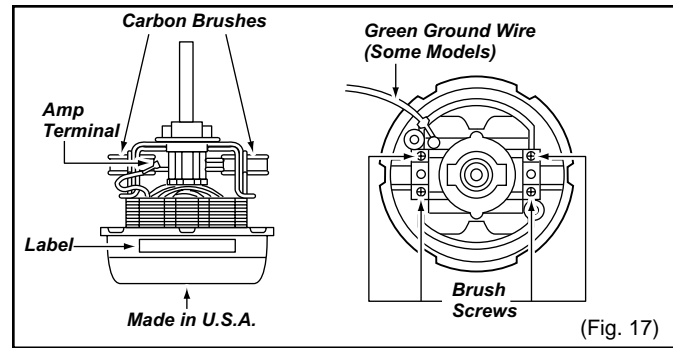
NOTE: Do not drop screws into the motor.

3. There are two (2) brushes located on the motor as identified in (Fig. 17). A Phillips head screwdriver will be required to remove the four (4) screws that hold the brush holders onto the motor. See (Fig. 17) for screw location.

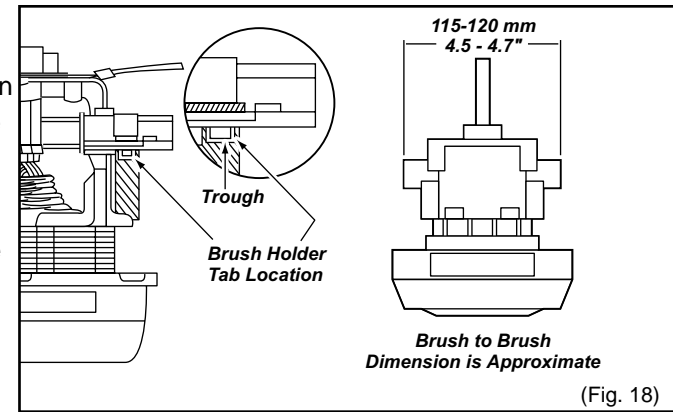
NOTE: When inserting the brush assembly, be sure that the TAB on the bottom of the brush holder is positioned in the trough as shown in (Fig. 18).

4. Replace the brush holder bracket with two (2) Phillips screws on each side of the motor.

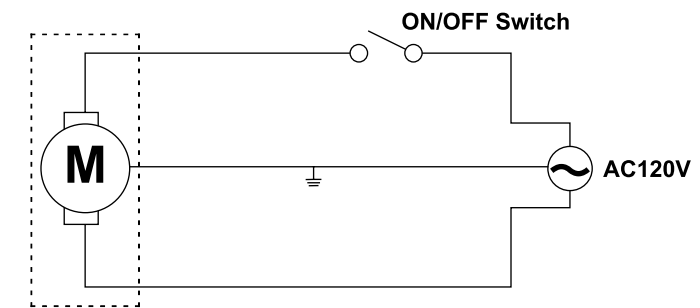
5. As a final check to assure proper installation of brushes, measure across the brushes for the approximate dimension as shown in (Fig. 18).



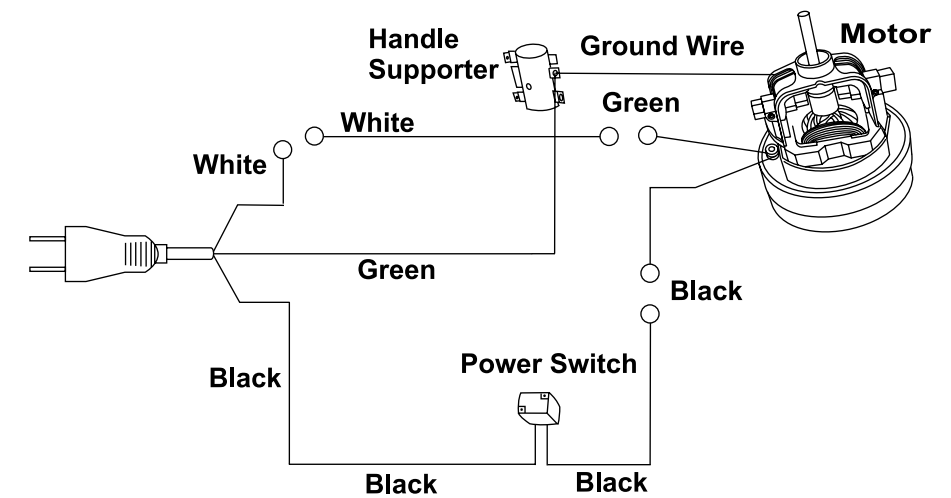
starting on the other side.



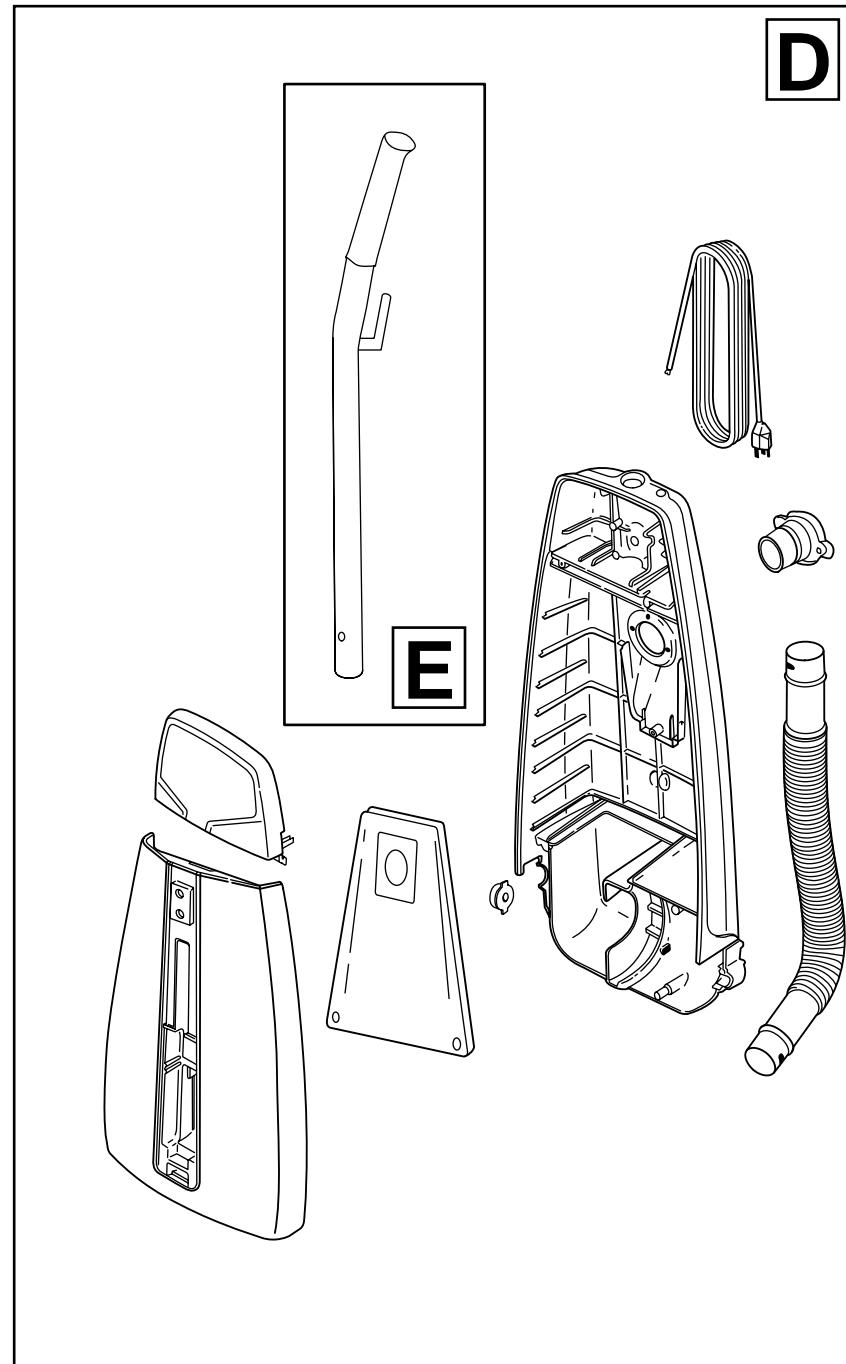
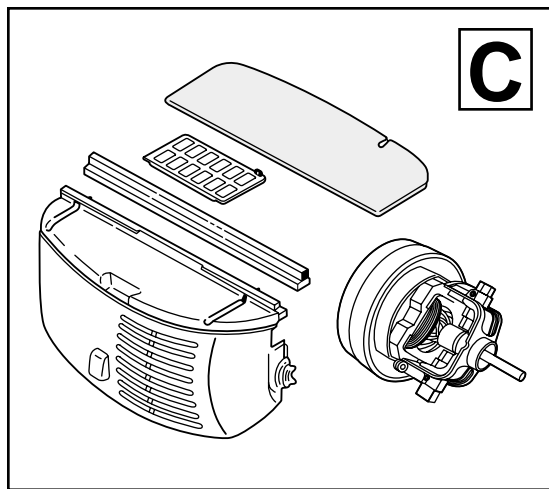
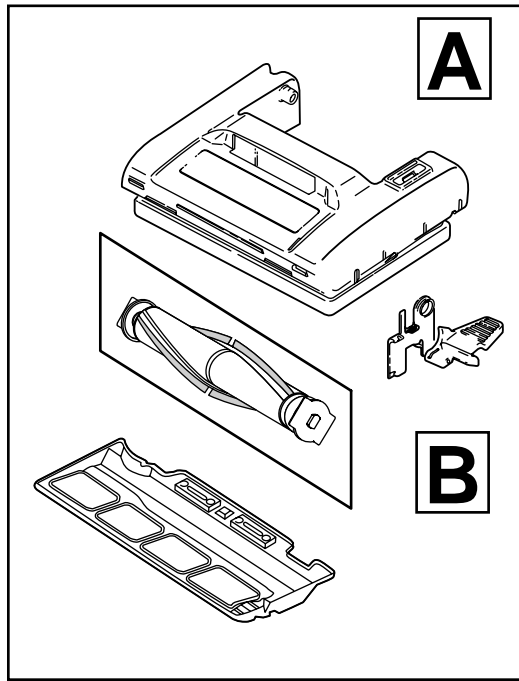
SCHEMATIC DIAGRAM



PICTORIAL DIAGRAM



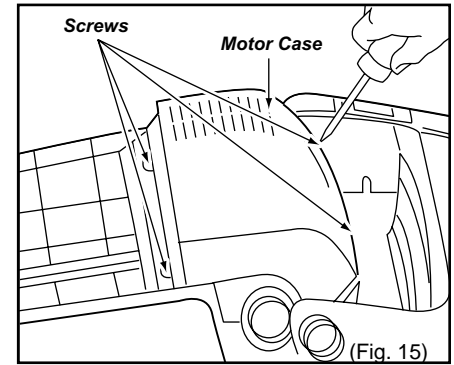
EXPLODED VIEW (GENERAL PARTS)



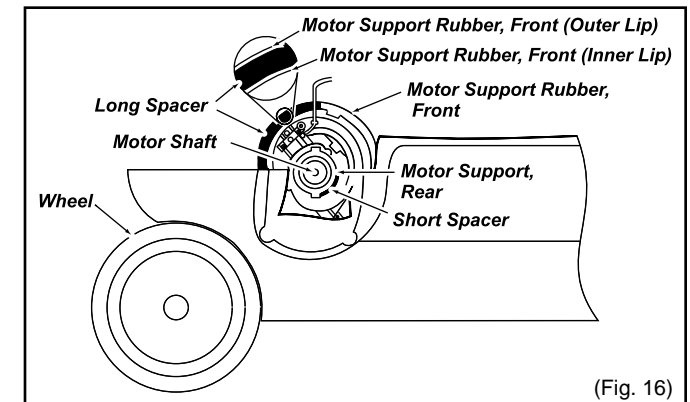
MOTOR REPLACEMENT

Removal

1. Remove the dust cover by grasping the top near the ON/OFF switch and pulling sharply out toward you.
2. Remove the lower plate, agitator assembly, belt, the plastic shaft, and the nozzle housing as instructed in the respective removal sections.
3. Turn the vacuum over to the front side and remove the four (4) screws from the motor case and then remove the motor case, (Fig. 15).
4. Disconnect the motor leads and remove the motor. Remove the motor support rubber (rear), noise suppressor, and the motor support rubber (front). Place these items on the new motor. See the **C Block** for a view of these.



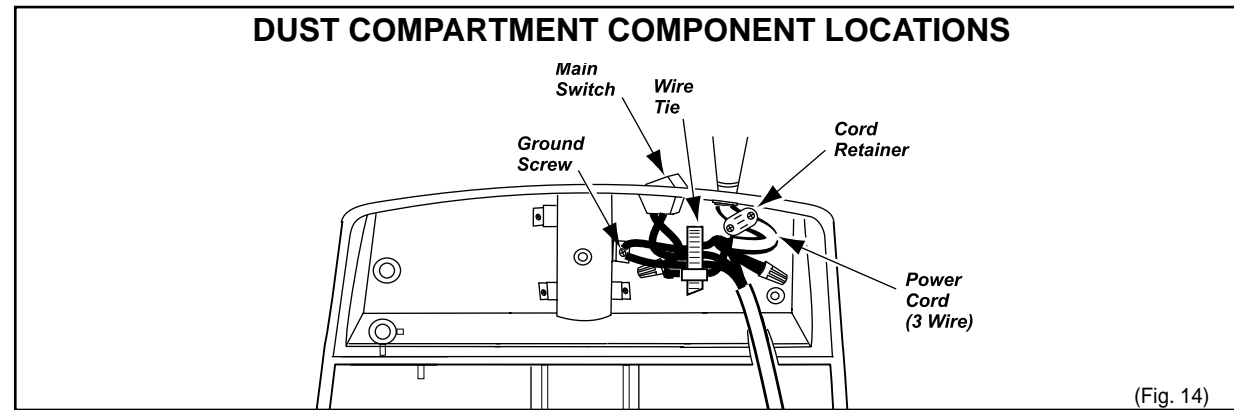
NOTE: When removing the motor, note the position of the short spacer on the motor support. This has been glued to the motor support and must be in this position when reassembling. The long spacer is fitted (not glued) into the flange of the motor support rubber front. Once this long spacer is placed into the flange the motor support rubber front should be orientated so the spacers will be opposite each other. The short spacer will be up and will be positioned in the correct place based on inserting the two protrusions into the motor as shown in figure 16.



Installation

1. Place the motor back into the dust compartment with brushes aligned to the front edge of the dust compartment. The motor support (rear) must also align with the tabs in the same direction.
2. Rewire per the PICTORIAL DIAGRAM.
3. Replace the motor case and the four (4) screws.
4. Turn the vacuum back over and replace the plastic shaft, nozzle housing, belt, agitator assembly, and lower plate according to the respective installation instructions.

POWER CORD/ON-OFF SWITCH REPLACEMENT



Removal

1. Remove the dust cover and switch cover to expose the electrical connections of the power cord, ON/OFF switch, and wire cord.
2. Pull the power cord into the dust compartment in order to remove the strain relief (for power cord replacement) by prying or cutting, remove the wire connectors, and wire tie, if present.
3. Remove the ON/OFF switch (for ON/OFF switch replacement) by depressing the switch retaining tabs while pushing up out of the dust compartment at the same time.
4. Pull the power cord out of the dust compartment (for power cord replacement)

Installation

1. Insert the new power cord (power cord replacement only) into the dust compartment as far as necessary in order to place a new cord retainer in proper location on power cord. The proper location is approximately one and one eighth inches/thirty millimeters (1 1/8"/30 mm) of new power cord yellow outer jacket extending past the cord retainer. Attach wires with wire connectors according to the wiring diagram in the front of this manual. **ONLY USE A NEW CORD RETAINER, DO NOT REUSE A CORD RETAINER.**
2. For switch replacement only, insert the new ON/OFF switch with the numbers 1,2,3, facing toward you, into the dust compartment until secured by the retaining tabs. Use a wire tie with the part number listed in the **C Block** parts list and place it in the location shown in (Fig. 14) taking care not to overtighten it. Tuck the wire connectors back into the dust compartment as shown in the close-up view in (Fig. 14).
3. Ensure that the Insulator Packing is installed correctly, (see Fig. 14).
4. Replace the switch cover, the two (2) switch cover screws, and the dust cover. Care should be taken not to pinch wires and make sure that the switch cover goes on easily and stays flat. If there is resistance to the switch cover lying flat and in place, stop, remove the cover and make sure that no wires are being pinched. **DO NOT USE A POWER SCREWDRIVER TO SECURE THE COVER.**

NOTE: Any service involving the handle or switch cover area should be followed up with a dielectric or current leakage check of the unit. If you do not have the equipment or are not familiar with the test procedures, take the unit to an authorized servicer.

SUCTION INLET/HOSE REPLACEMENT

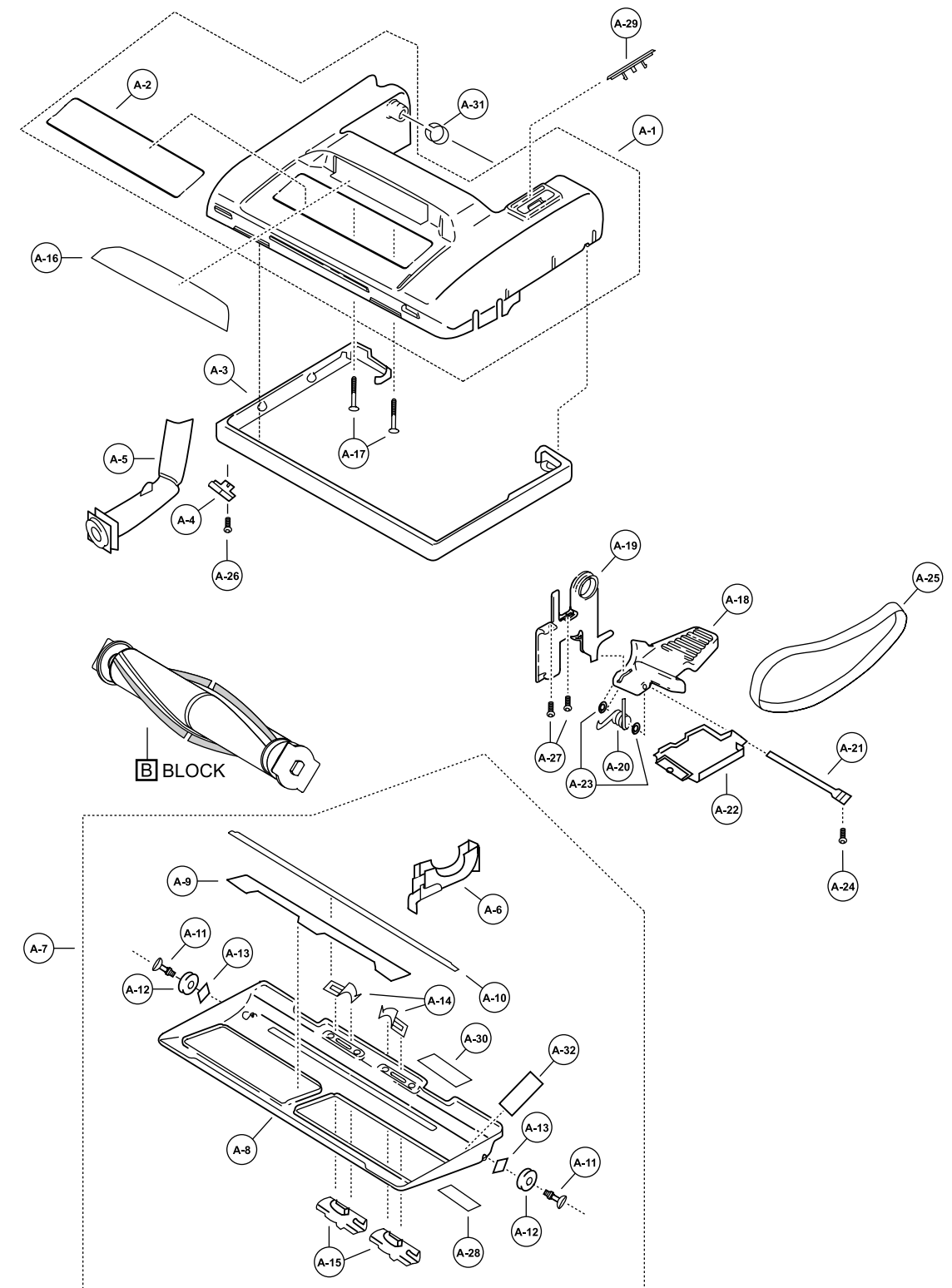
Removal

1. Remove the lower plate as instructed in the LOWER PLATE REMOVAL/INSTALLATION section.
2. Pull the hose up out of the nozzle housing. Push the hose out of the back of the nozzle housing.
3. Remove the hose from the suction inlet by pulling up on it.

Replacement

1. Replace the new hose by pushing it back into the suction inlet.
2. Insert the hose in through the back of the nozzle housing. Push the end of the hose down into the slot in the nozzle.
3. Replace the lower plate as described in the LOWER PLATE REMOVAL/INSTALLATION section.

EXPLODED VIEW (NOZZLE HOUSING)... A BLOCK



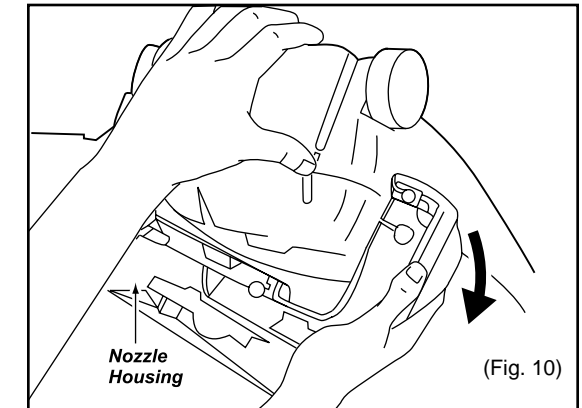
■ PARTS LIST (NOZZLE HOUSING)... **A** BLOCK

Ref. No.	Part Name & Description	Part No.	Quantity	Remarks
A-1	Nozzle Housing	AC01AARGZU03	1	
A-2	Top Mark	AC02TCBZZ000	1	
A-3	Furniture Guard	AC10AV3ZV07	1	
A-4	Hose Fitting Plate	AMC27S-V30	1	
A-5	Nozzle Pipe	AMC70S-V30W	1	
A-6	Belt Cover	AC43STDZ00	1	
A-7	Lower Plate Assembly	AC91AARGZ00	1	
A-8	Lower Plate	AC27AARGZ00	1	
A-9	Packing (Lower Plate Front)	AMC19A-V30	1	
A-10	Packing (Lower Plate Back)	AMC74A-V30	1	
A-11	Roller Shaft	AMC50R-V30	2	
A-12	Roller (Floor Nozzle)	AC90RJMZ00	2	
A-13	Spring Nut (Push On)	AMC-XNK4FY	2	
A-14	Stop Latch Spring	AC70NYUZ00	2	
A-15	Latch	AMC68N-V30K	2	
A-16	Window	AC21H1LZU03	1	
A-17	Screw (Nozzle Housing)	AMC68A-V30	2	
A-18	Pedal	AMC47A-V30U	1	
A-19	Frame	AMC43A-V30	1	
A-20	Pedal (Spring)	AMC58A-V30	1	
A-21	Pedal Shaft	AMC51A-V30	1	
A-22	Rear Belt Cover	AMC11S-V30W	1	
A-23	E-Clip	AMC-XUC4FY	2	
A-24	Screw (Pedal Shaft)	AXTN4+20BFY	1	
A-25	Flat Belt	AMC28S-AV0	1	
A-26	Screw (Hose Fitting Plate)	AXTN4+16BFY	1	
A-27	Screw (Frame)	AXTN4+20BFY	2	
A-28	Caution Label	AMC08Z-V30	1	
A-29	Cover Plate	AC24ATDZU03	1	
A-30	Caution Label	AC07ZADFZ00	1	
A-31	Body Supporter	AMC02C-1L0	1	
A-32	Packing (Lower Plate)	AC39AARGZ00	1	

■ NOZZLE HOUSING REPLACEMENT

Removal

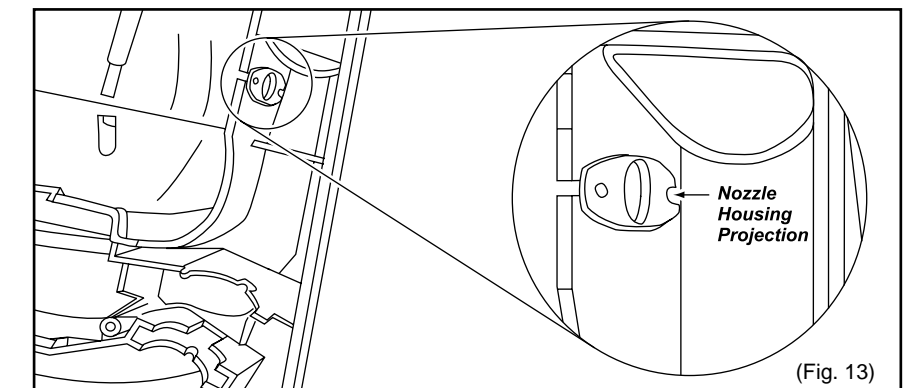
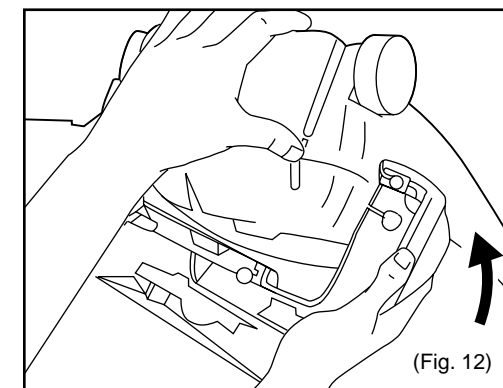
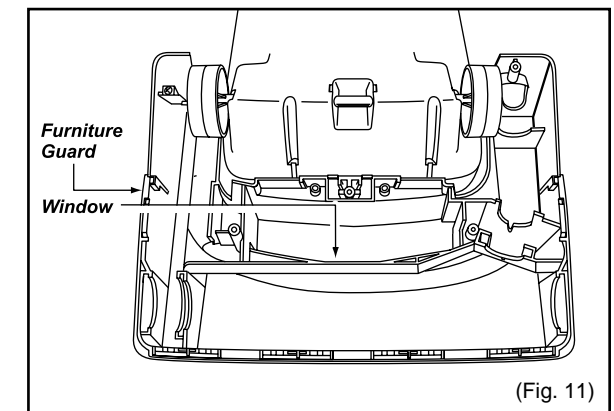
1. Remove the lower plate as outlined in the LOWER PLATE REMOVAL/INSTALLATION section.
2. Remove the belt and agitator assembly as outlined in the respective sections.
3. Remove the hose by pulling it out of the back of the nozzle housing.
4. Remove screw to remove nozzle pipe from housing.
5. Remove screws to remove nozzle housing from pedal assembly.
6. Remove the nozzle housing as illustrated, (Fig 10).
7. Remove the window by prying the two (2) locking tabs away from the nozzle housing and pushing out on the window.



NOTE: If the motor case is removed, DO NOT turn vacuum over as the motor may fall out.

Installation

1. Install the window into the new nozzle housing, (Fig. 11).
2. Fit the nozzle from the motor shaft side first, and rotate it into place onto the pedal assembly on the dust container as illustrated, (Fig. 12).
3. Reinstall the three screws into the pedal assembly.
4. Reinstall nozzle pipe into nozzle housing.
5. Reinsert the nozzle hose back into the nozzle.
6. Install the belt, agitator assembly, belt cover, and the lower plate according to the respective instructions.



BRUSH REPLACEMENT

When to replace brushes

1. The agitator brushes should be replaced when they are worn. Brushes should be checked by holding a card across the lower plate, (Fig. 5). If the bristles on the agitator assembly **do not** touch the card you **should** replace all the brushes for best cleaning results.

Removal

NOTE: Use extreme care when prying or depressing these items with a screwdriver in order to help prevent personal injury or damage to the vacuum.

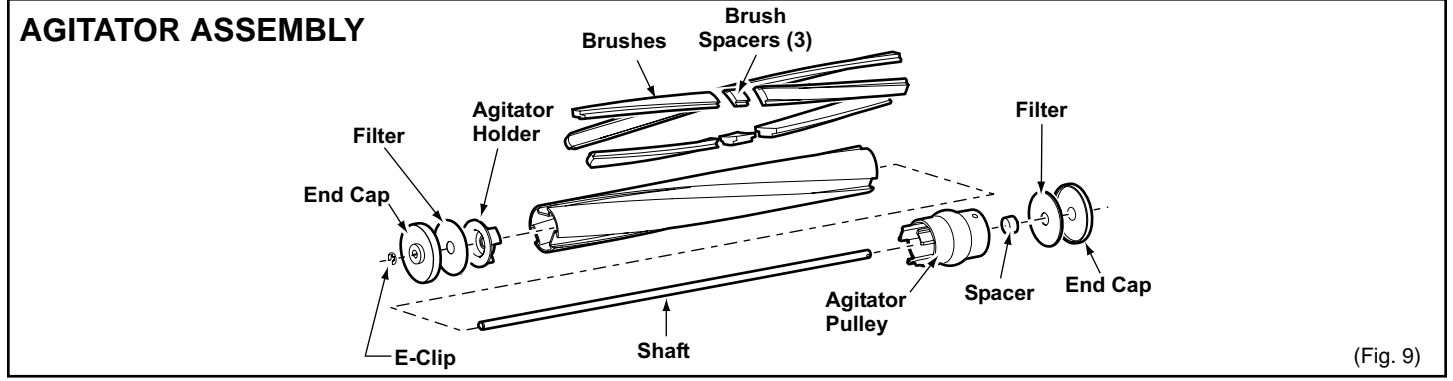
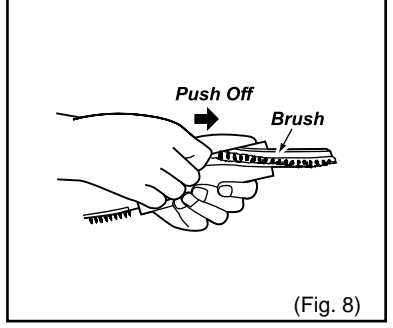
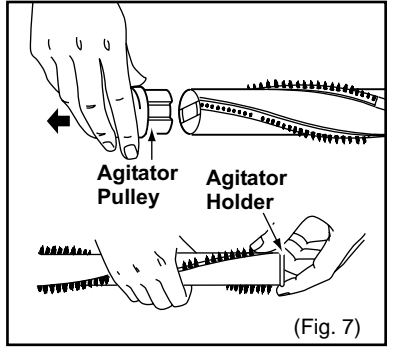
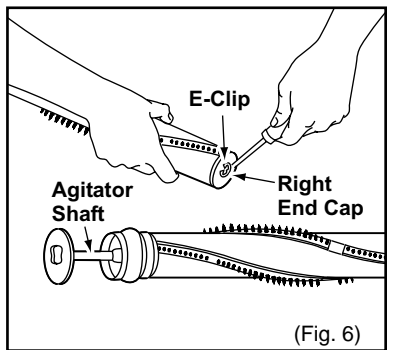
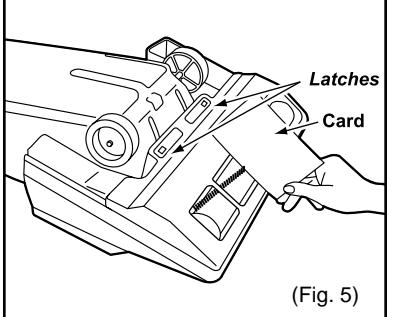
Be careful when working around the ends of the metal brush holder since sharp edges may be present.

1. Remove the lower plate as outlined in the LOWER PLATE REMOVAL/INSTALLATION section.
2. Remove the agitator assembly as outlined in the AGITATOR ASSEMBLY REMOVAL/INSTALLATION section.
3. The agitator assembly may now be disassembled and the brushes replaced.
4. Using a small screwdriver, carefully remove the E-clip from the agitator shaft, (Fig. 6), do not misplace. Remove the right end cap. Pull the agitator shaft out of the opposite end of the agitator.
5. Pull or pry out the agitator pulley and agitator holder, (Fig. 7).
6. The brushes can now be replaced, (Fig. 8). Each brush must be inserted so that the end with eleven (11) tufts is placed on the side of the brush holder closest to the belt pulley. Push each brush as shown in the illustration until it is free from the agitator body. Install the new brushes by reversing the procedure.

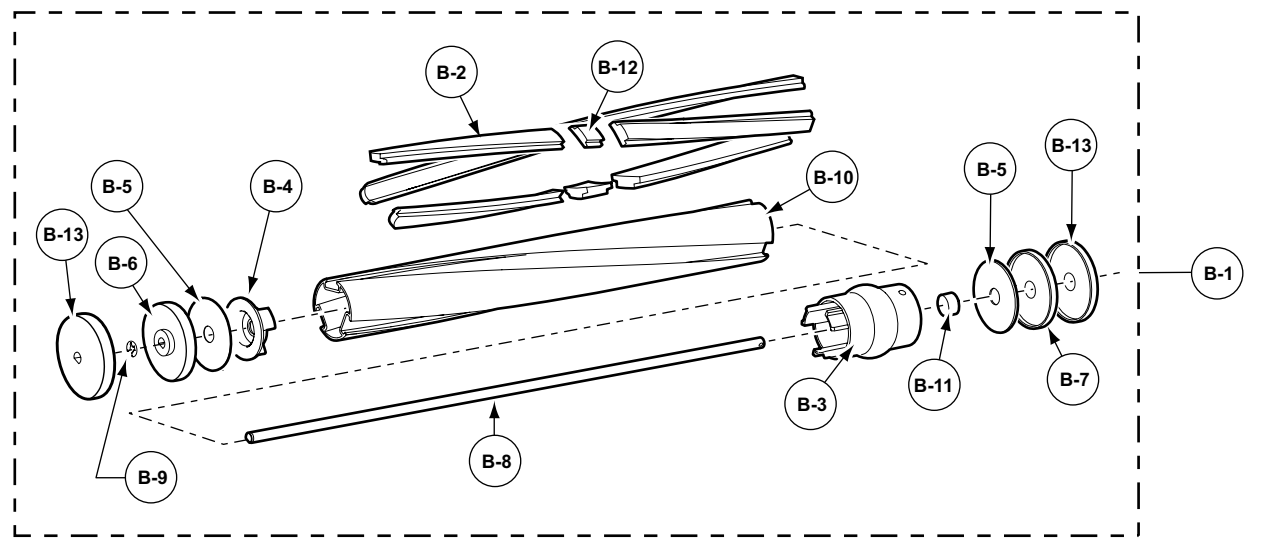
Installation

1. Pull the new brushes into the slots in the brush holder.
2. Reinstall the agitator holder and agitator pulley, making sure they are completely and firmly inserted. See (Fig. 9) for an exploded view.
3. Reinstall the agitator shaft, brush support, and the small E-clip.
4. Reinstall the agitator assembly as outlined in the AGITATOR ASSEMBLY REMOVAL/INSTALLATION section.
5. Reinstall the lower plate as outlined in the LOWER PLATE REMOVAL/INSTALLATION section.

NOTE: When the brushes are properly installed they will not hit the lower plate as the agitator assembly rotates.



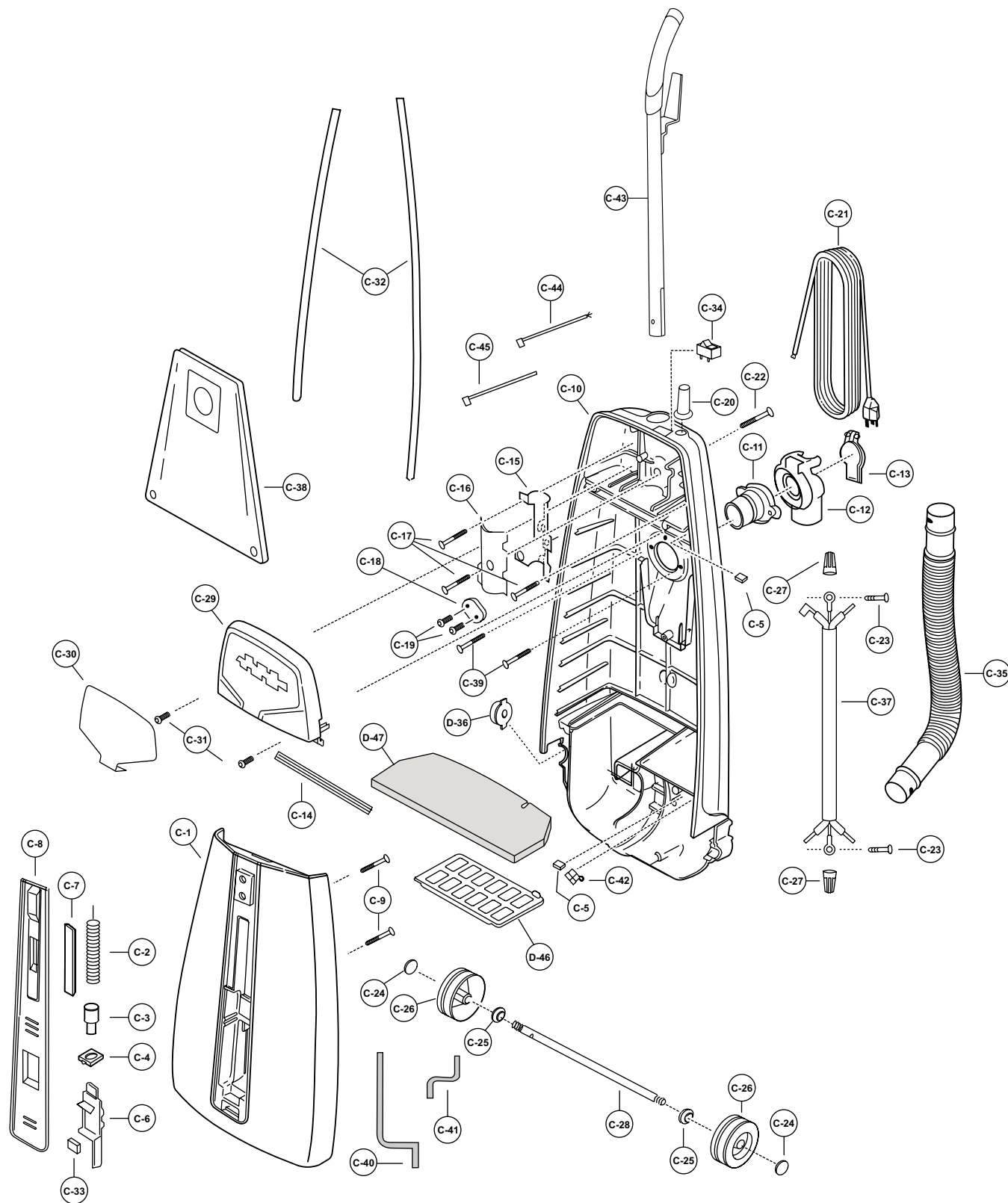
EXPLODED VIEW (AGITATOR ASSEMBLY)... B BLOCK



PARTS LIST (AGITATOR ASSEMBLY)... B BLOCK

Ref. No.	Part Name & Description	Part No.	Quantity	Remarks
B - 1	Agitator Assembly	AC92SBYXZ000	1	
B - 2	Brush (6 Pcs.)	AC85RARGZ000	1	
B - 3	Agitator Pulley	AC29SBVNZ000	1	
B - 4	Agitator Holder	AC41SBVNZ000	1	
B - 5	Filter	AC44KBVNZ000	2	
B - 6	End Cap (Right)	AC96DBVNZ000	1	
B - 7	End Cap (Left)	AC97DBVNZ000	1	
B - 8	Agitator Shaft	AC57RBYXZ000	1	
B - 9	E-Clip	AC23FBVNZ000	1	
B - 10	Brush Holder	AC56RBYYZ000	1	
B - 11	Spacer	AC74SBYXZ000	1	
B - 12	Spacer (Brushes)	AC34SBYYZ000	3	
B - 13	Agitator End Cap	AC96DARFZ000	2	

EXPLODED VIEW (DUST CONTAINER AND HANDLE)... C BLOCK

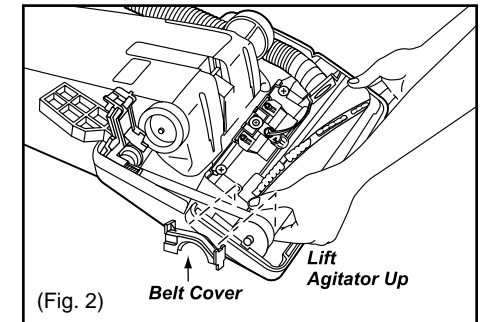


AGITATOR ASSEMBLY REMOVAL/INSTALLATION

Removal

The brushes are replaceable separately. When the brushes need replacing, the agitator assembly will have to be removed.

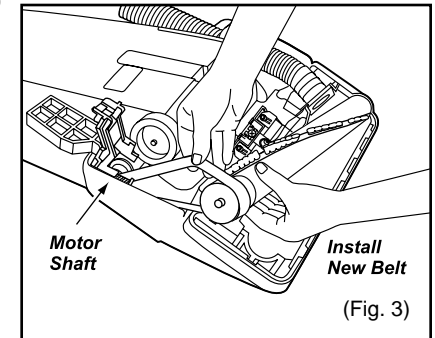
1. Remove the lower plate as outlined in the LOWER PLATE REMOVAL/INSTALLATION section.
2. Remove the belt cover and carefully lift up on the agitator assembly until it clears both sides of the nozzle housing, (Fig. 2).
3. Remove the belt from the agitator pulley by sliding it off over the agitator assembly, (Fig. 3).



Installation

NOTE: The brush supports are different and each must be assembled on the correct end of the agitator assembly. When reassembling the agitator, make sure rubber end caps are in place. See the exploded view in the B Block section.

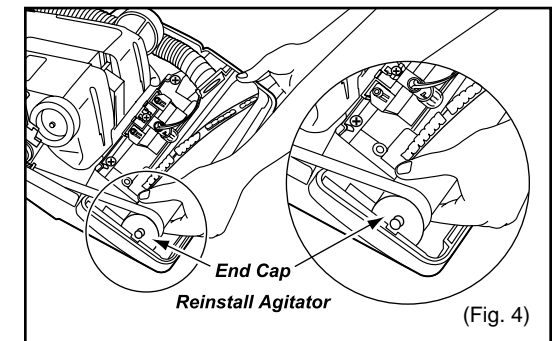
1. Place the belt around the motor shaft, (Fig. 3).
2. Start the new agitator assembly back into the nozzle housing by placing the side opposite the belt partially into the slot. The small tabs should be aligned with one against the nozzle and the other against the lower plate. This will hold the agitator in place and leave both hands free to place enough tension on the belt to allow that side of the agitator to return to the nozzle housing slot.



3. Place the belt around the agitator pulley on the agitator assembly.

NOTE: There is a place for the belt to fit on one end of the agitator assembly only. This is the agitator pulley.

4. Use both hands to pull the belt tight, (Fig. 4), and slide the agitator assembly firmly into the slots on each end of the nozzle housing.
5. Rotate the agitator assembly by hand to insure nothing rubs and to check for correct assembly.
6. Replace the belt cover and the lower plate as outlined in the LOWER PLATE REMOVAL/INSTALLATION section.



BELT REPLACEMENT

Removal

1. Follow all of the removal instructions outlined in the AGITATOR ASSEMBLY REMOVAL/INSTALLATION section.

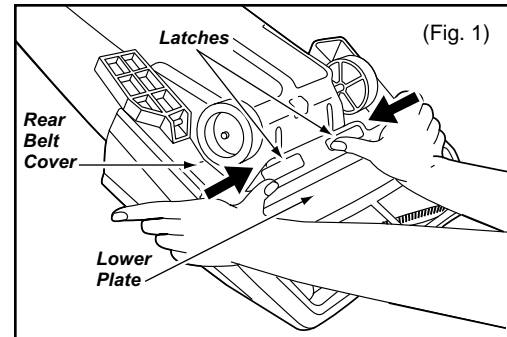
Installation

2. Place the new belt around the motor shaft and follow the installation instructions in the AGITATOR ASSEMBLY REMOVAL/INSTALLATION section.

■ LOWER PLATE REMOVAL/INSTALLATION

Removal

1. Place the handle in the upright position.
2. Turn the vacuum cleaner over exposing the underside. Release the lower plate by pressing the two (2) latches that secure it inward, (Fig 1).
3. Separate the lower plate from the vacuum.



Installation

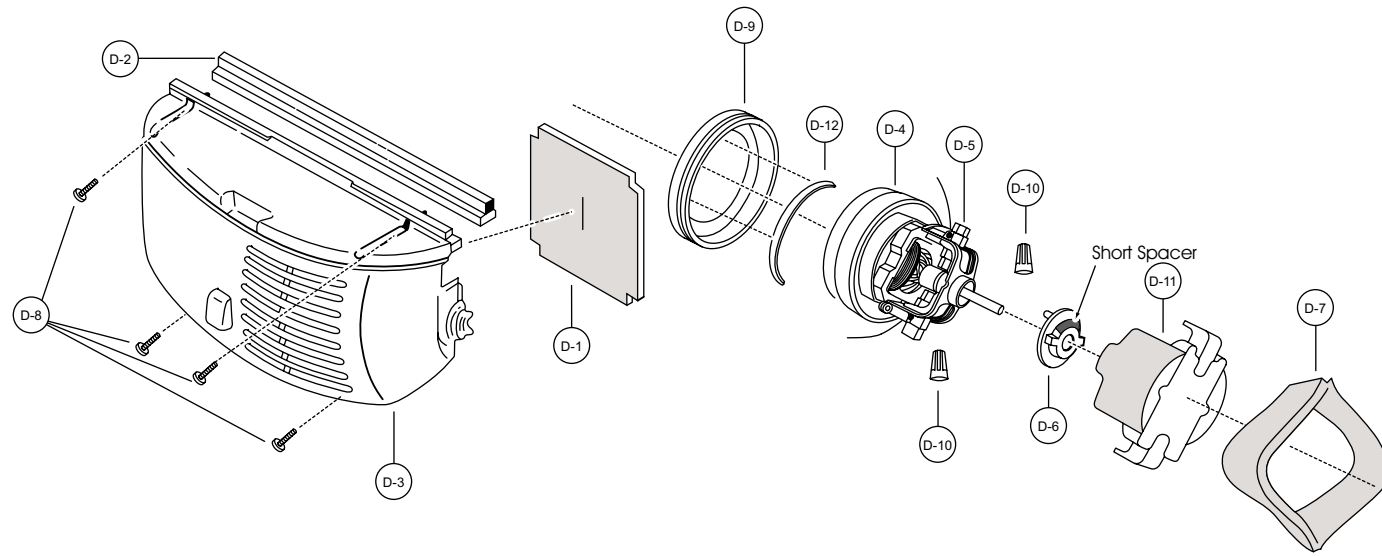
1. Close the rear belt cover.
2. Hook the front of the lower plate into the slots on the front of the nozzle housing. Press the lower plate down into place.
3. Fasten the lower plate by pushing the two (2) latches inward.

NOTE: For general servicing, it is necessary to eliminate pinching of any wire during reassembly. After servicing any electrical component or electrical enclosure, the unit should be reassembled and checked for dielectric breakdown or current leakage.

■ PARTS LIST (DUST CONTAINER AND HANDLE)... [C] BLOCK

Ref. No.	Part Name & Description	Part No.	Quantity	Remarks
C - 1	Dust Cover	AC6ØKCBZZUØ3	1	
C - 2	Indicator Spring	AMCØ4M-1LØ	1	
C - 3	Indicator Lead	AMC97M-V3Ø	1	
C - 4	Indicator Lead Supporter	AMC2ØM-V3Ø	1	
C - 5	Tight Packing	AMC81A-1LØØØ	2	
C - 6	Suction Control Lever	ACØ6MV31VØ7	1	
C - 7	Indicator Window	AMCØ8M-V3Ø	1	
C - 8	Front Cover	ACØ1HCBZZUØ3	1	
C - 9	Screw (Dust Cover)	AXTN4+16BFY	2	
C - 10	Dust Container	AC4ØKARGZVØ7	1	Includes C-32 Packing
C - 11	Suction Inlet Packing	AMC64H-9GØØU	1	
C - 12	Suction Inlet	AC6ØHF74VØ7	1	
C - 13	Cover	ACØ2HF73VØ7	1	
C - 14	Packing (Switch Cover)	AC73KV3ZVØ6	1	
C - 15	Handle Supporter	AMC53B-1LZØØ	1	
C - 16	Handle Fitting	AMC69B-V3ØØØ	1	
C - 17	Screw (Handle Supporter)	AXTN4+16BFY	3	
C - 18	Cord Stopper	AC62ETEZUØ1	1	
C - 19	Screw	AXTN4+16BFY	2	
C - 20	Rubber Protector	AC51E4GZUØ1	1	
C - 21	Power Cord	AC94EAPPZYØ2	1	
C - 22	Handle Screw	AMC73B-V3Ø	1	
C - 23	Screw (Grounding) Motor Handle Fitting	AXYN4+E10FFY	2	
C - 24	Stopper, Wheel	AC74SUSZØØ	1	
C - 25	Washer	AXWG6E115FY	2	
C - 26	Wheel	AMCØ1C-VØZUØ	2	
C - 27	Wire Nut	AMC-ICTCE23	2	
C - 28	Roller Shaft	AC16CXVZØØ	1	
C - 29	Switch Cover	ACØ3E9GZUØ3	1	
C - 30	Ornamental Plate	AC21TCBZZØØØ	1	
C - 31	Screw	AXTN4+16BFY	2	
C - 32	Packing (Dust Container)	AMC66K-V3ØJ	2	
C - 33	Packing (Indicator)	AMC09M-V30	1	
C - 34	Switch - On/Off	AMC414-7938	1	
C - 35	Nozzle Hose	AC34PTDZUØ1	1	
C - 36	Plastic Shaft	AMC25S-V31W	1	
C - 37	Connection Cord	AC64ETDZVUØ	1	
C - 38	Dust Bag Type U6	AC16KBYTZØØØ	1	
C - 39	Screw (Suction Inlet Packing)	AXTN4+16BFY	2	
C - 40	Packing (Left)	AC4ØAYUZVØØ	1	
C - 41	Packing (Right)	AC39AYUZVØØ	1	
C - 42	Cord Stopper	AMC62E-M1Ø	1	
C - 43	Handle Assembly	AC95BTEZVU7		
C - 44	Lead Wire	AC44GTDZUØØ	1	
C - 45	Tie Cable	AMC596-7Ø2	1	
C - 46	Filter Supporter	AMC32K-VØØ	1	
C - 47	Secondary Filter	AC3ØKCBZZØØØ	1	

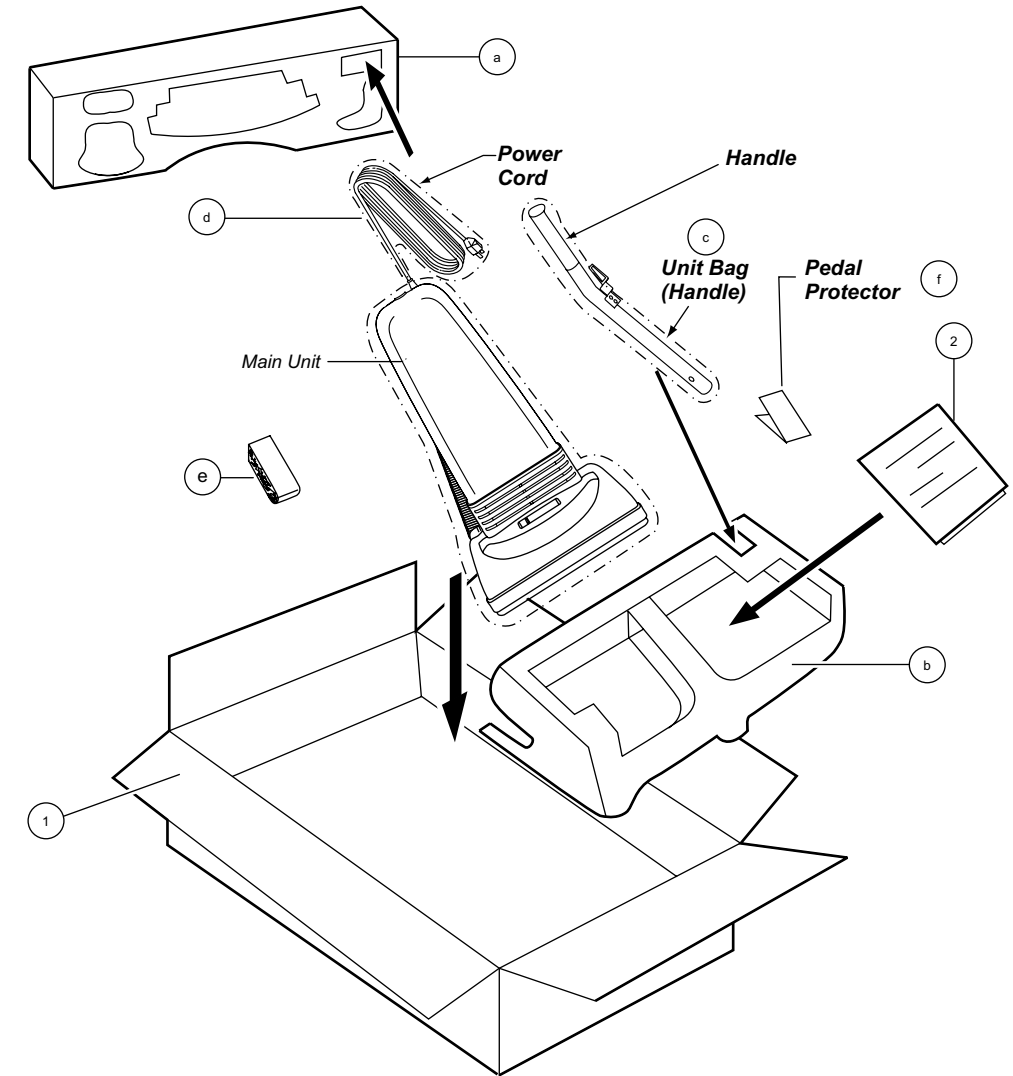
EXPLODED VIEW (MOTOR UNIT)... **D** BLOCK



PARTS LIST (MOTOR UNIT)... **D** BLOCK

Ref. No.	Part Name & Description	Part No.	Quantity	Remarks
D- 1	Rear Cover Packing	AMC02L-V3Ø	1	
D- 2	Motor Case Packing	AC19FV3ZV06	1	
D- 3	Motor Case	AC09FARGZU03	1	
D- 4	Fan Motor Unit	AC92FTD10U	1	
D- 5	Carbon Brush (Set)	AMC27F-REZ0000	1	(Set)
D- 6	Motor Support Rubber (Rear)	AC03FTDZ00	1	Incl. Short Spacer
D- 7	Noise Suppressor	AMC99G-L310X	1	
D- 8	Screw	AXTN4+16BFY	4	
D- 9	Motor Support Rubber (Front)	AMC02F-D4Ø	1	
D- 10	Wire Nut	AMC-ICTCE23	2	
D- 11	Motor Cover	AMC93F-TEZ0U00	1	
D- 12	Spacer; Long	AC53MTEZ00	1	

EXPLODED VIEW (PACKING MATERIALS)



PARTS LIST (PACKING MATERIALS)

Ref. No.	Part Name & Description	Part No.	Quantity	Remarks
1	Packaging Assembly	AC61ZCBZZ000	1	Includes items a-f
2	Operator Instruction	AC01ZCBZ1000	1	