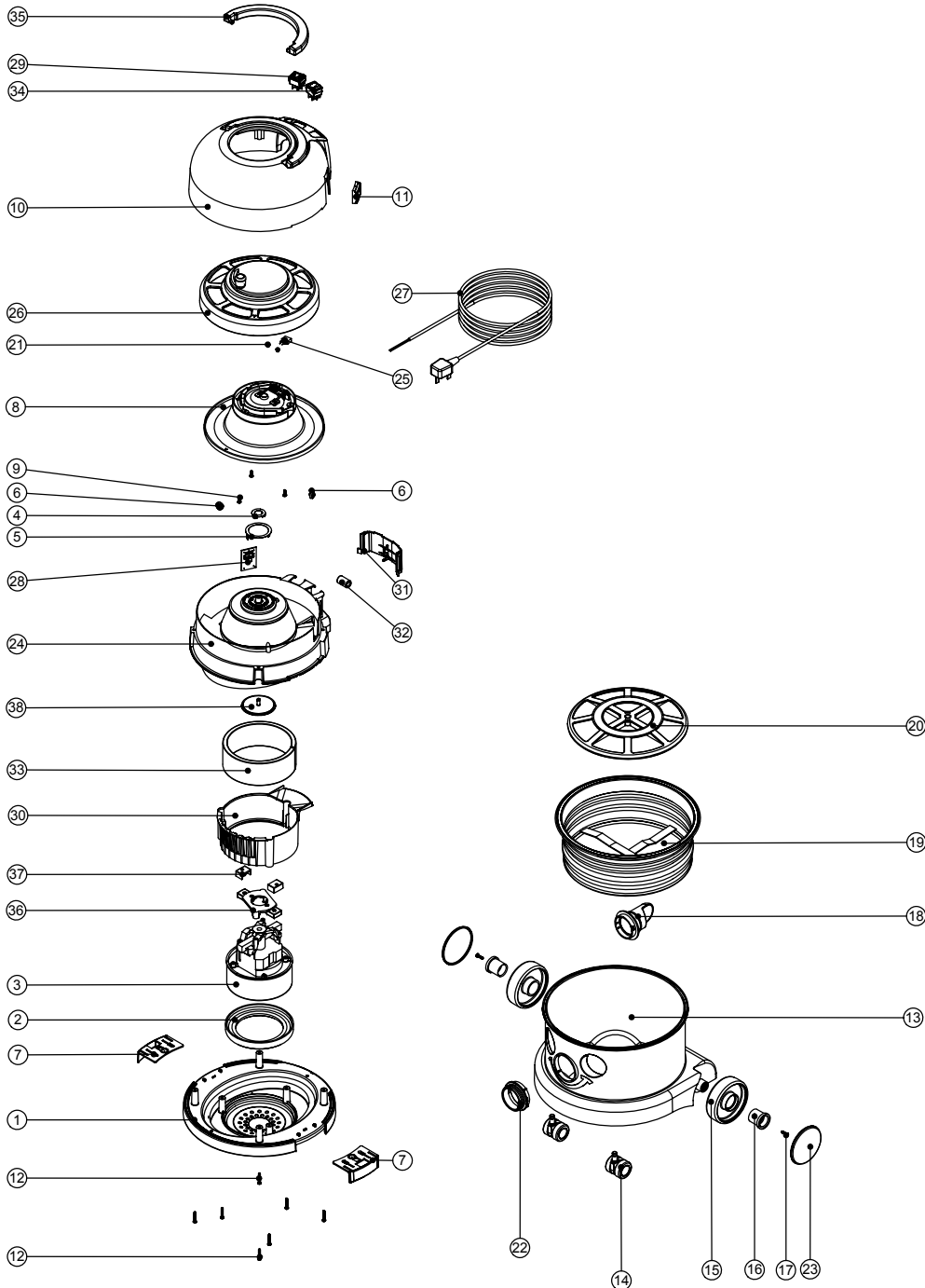


Numatic International Spare Parts

Model No: NRV200-22

234445
DRAWING: EXP-0876 ISS:A03
19/9/2006

NB: FOR WIRING SEE DRAWING: WD-0333



Numatic International Spare Parts

Model No: NRV200-22

POS.	ITEM NO.	DESCRIPTION:	COMMENTS:
1	229716	BOTTOM MOTOR HOUSING (TWIN SHOT)	
2	227882	BOTTOM MOTOR GASKET	
3	205403	240V 2 STAGE THRO FLOW TAPER FAN MOTOR (DL21104T) TCO	
	205402	220V 2 STAGE THRO FLOW TAPER FAN MOTOR (DL21102T) TCO (MARKED 230V)	
	205401	120V 2 STAGE THRO FLOW TAPER FAN MOTOR (DL21101T) TCO	
4	227141	INNER CONTACT RING	
5	227142	OUTER CONTACT RING	
6	227436	ROLLER WHEEL	
7	229715	TOGGLE (TWIN SHOT)	
8	227447	CABLE REEL MOULDING ASSEMBLY	
	227348	CABLE REEL MOULDING ASSEMBLY	CSA APPROVED MACHINES
9	219101	No8 X 1/2 INCH LONG POZI PAN PLASTIITE SCREW	
10	325619	BLACK COVER + HANDLE ASSEMBLY (WHITE LOGO PRINTED NUMATIC)	INCLUDES ITEM 36 (227120 HANDLE)
	325624	BLACK COVER + HANDLE ASSEMBLY (GREY LOGO PRINTED NUMATIC)	INCLUDES ITEM 36 (227120 HANDLE)
11	227108	BLACK CABLE ENTRY	
12	219104	No8 X 1 INCH LONG POZI PAN PLASTITE SCREW	
13	225191	RED MOULDED DRUM PLUS FACE	
	225192	BLUE MOULDED DRUM PLUS FACE	
	225193	GREEN MOULDED DRUM PLUS FACE	
	225194	YELLOW MOULDED DRUM PLUS FACE	
	225301	NRV 200 RED MOULDED DRUM	
	225302	NRV 200 BLUE MOULDED DRUM	
	225303	NRV 200 GREEN MOULDED DRUM	
	225304	NRV 200 YELLOW MOULDED DRUM	
14	204111	50MM PU-TYRED BLACK TWIN WHEEL CASTOR	
15	227640	2 SHOT WHEEL ASSEMBLY	
16	227868	WHEEL HUB FOR 2 SHOT WHEEL	
17	219105	No8 X 5/8 INCH LONG POZI PAN PLASTITE SCREW	
18	227363	BAG CONNECTOR	
19	207098	WHITE FILTER (SMS) + U GASKET	
20	209200	12 INCH FILTER GRID	
21	219090	M4 X 8MM LONG POZI PAN SEMS SCREW	
22	227396	RED THREADED NECK	
	227397	BLUE THREADED NECK	
	227398	GREEN THREADED NECK	
	227399	YELLOW THREADED NECK	
	325682	HVR/NRV TOP MOTOR HOUSING (TWIN ROCKER SWITCH) MODIFIED FOR 1.5MM CABLE	INDUSTRIAL MACHINES ONLY
23	227638	BLACK TRIM	
24	229620	TOP MOTOR HOUSING	
25	230096	SUPPRESSOR CAPACITOR ASSEMBLY WITH DISCHARGE RESISTOR	
26	333113	CABLE REEL COVER ASSEMBLY (C/W WINDER KNOB)	
27	236116	12.5MT X 1MM X 2 CORE (H05 V2V2-F) UK PLUG	
	220251	12.5 X 2 1MM CABLE + ST CONT PLUG	
	220192	12.5MT X 1.0MM X 2 CORE CABLE C/W SWISS PLUG	
	220467	12.5MT X 1MMSQ X 2 CORE M/CABLE + RSA PLUG	
	236044	10.0M X 1MM X 2 CORE BLACK CABLE PLUS AUSTRALIAN PLUG	
	236049	10MT X 2 CORE X 1.5MM CABLE PLUS 16AMP INDUSTRIAL PLUG	INDUSTRIAL MACHINES ONLY
28	206735	NUMATIC 2 SPEED CONTROL PCB (220V-240V) ORANGE BOARD	
	206608	NUMATIC 2 SPEED CONTROL PCB (120V) RED BOARD	
29	220243	BLACK/GREEN ROCKER SWITCH	
30	229621	AIR GUIDE	
31	229623	SWITCH COVER	
32	230097	AXIAL FERRITE BEAD	
33	203020	POD SIDE FELT	
34	220552	RED ROCKER SWITCH	
35	227120	HANDLE	
36	227881	MOTOR PLATE	
37	227438	RUBBER END PAD	
38	227437	TERMINAL COVER	

