

WALK BEHIND SWEEPER



Operating Instructions (ENG)

MODELS: RWB241
10100150



Read instructions before operating the machine.



86037640 02/22/08

PRV NO. 980218

MACHINE DATA LOG/OVERVIEW

MODEL _____

DATE OF PURCHASE _____

SERIAL NUMBER _____

SALES REPRESENTATIVE # _____

YOUR DEALER

Name: _____

Address: _____

Phone Number: _____

TABLE OF CONTENTS

<i>Machine Data Log/Overview</i>	2
<i>Table of Contents</i>	3

HOW TO USE THIS MANUAL

<i>How to use this Manual</i>	1-1
-------------------------------------	-----

SAFETY

<i>Safety Instructions</i>	2-1
<i>Hazard Intensity Level</i>	2-2
<i>Security Warning</i>	2-3

OPERATIONS

<i>Unpacking the machine</i>	3-1
<i>Preparing for Operation</i>	3-1
<i>Controls</i>	3-2
<i>Components</i>	3-2
<i>Machine Operation</i>	3-3
<i>Technical Specifications</i>	3-3
<i>Use of On Board Battery Charger</i>	3-3
<i>Starting Machine</i>	3-3
<i>Hopper Cleaning/Emptying</i>	3-3

MAINTENANCE

<i>Machine Maintenance</i>	4-1
<i>Side Brush Replacement</i>	4-1
<i>Main Brush Replacement</i>	4-1
<i>Adjusting Side Brush</i>	4-1
<i>Actuator Function</i>	4-1
<i>Filter Maintenance</i>	4-2
<i>Pre-Filter</i>	4-2
<i>Main Filter</i>	4-2
<i>Programming</i>	4-2
<i>Service Schedule</i>	4-3
<i>Control Panel Codes</i>	4-3
<i>Scrapping Machine</i>	4-3

GROUP PARTS LIST

<i>Chassis Group</i>	5-1
<i>Brush/Filter Group</i>	5-3
<i>Wiring Diagram</i>	5-5
<i>Warranty</i>	5-6

HOW TO USE THIS MANUAL

This manual contains the following sections:

- HOW TO USE THIS MANUAL
- SAFETY
- OPERATIONS
- MAINTENANCE
- PARTS LIST

The HOW TO USE THIS MANUAL section will tell you how to find important information for ordering correct repair parts.

Parts may be ordered from authorized dealers. When placing an order for parts, the machine model and machine serial number are important. Refer to the MACHINE DATA log which is filled out during the installation of your machine. The MACHINE DATA log is located on the inside of the front cover of this manual.

MODEL _____
DATE OF PURCHASE _____
SERIAL NUMBER _____
SALES REPRESENTATIVE # _____

Always ensure that the machine is provided with a nameplate giving the **Serial Number** and **CE marking**. The identification badge is located on the frame. If missing, please contact your dealer immediately.

The SAFETY section contains important information regarding hazard or unsafe practices of the machine. Levels of hazards is identified that could result in product or personal injury, or severe injury resulting in death.

The OPERATIONS section is to familiarize the operator with the operation and function of the machine.

The MAINTENANCE section contains preventive maintenance to keep the machine and its components in good working condition. They are listed in this general order:

- Batteries
- Brushes
- Belts
- Service Schedule
- Machine Troubleshooting

The PARTS LIST section contains assembled parts illustrations and corresponding parts list. The parts lists include a number of columns of information:

- **REF** – column refers to the reference number on the parts illustration.
- **PART NO.** – column lists the part number for the part.
- **PRV NO.** – reference number.
- **QTY** – column lists the quantity of the part used in that area of the machine.
- **DESCRIPTION** – column is a brief description of the part.
- **SERIAL NO. FROM** – column indicates the first machine the part number is applicable to. When the machine design has changed, this column will indicate serial number of applicable machine. The main illustration shows the most current design of the machine. The boxed illustrations show older designs. If column has an asterisk (*), call manufacturer for serial number.
- **NOTES** – column for information not noted by the other columns.

NOTE: If a service or option kit is installed on your machine, be sure to keep the KIT INSTRUCTIONS which came with the kit. It contains replacement parts numbers needed for ordering future parts.

NOTE: The number on the lower left corner of the front cover is the part number for this manual.

IMPORTANT SAFETY INSTRUCTIONS

When using a battery powered appliance, basic precaution must always be followed, including the following:

READ ALL INSTRUCTIONS BEFORE USING THIS MACHINE.



WARNING:

To reduce the risk of fire, electric shock, or injury:

Use only indoors. Do not use outdoors or expose to rain.

Use only as described in this manual. Use only manufacturer's recommended components and attachments.

If the machine is **not working properly**, has been dropped, damaged, left outdoors, or dropped into water, return it to an authorized service center.

Do not operate the machine with any openings blocked. Keep openings free of debris that may reduce airflow. This machine **is not** suitable for picking up hazardous dust.

DO NOT operate machine without hopper and/or filters in place.

Machine can cause a fire when operating near flammable vapors or materials. Do not operate this machine near flammable fluids, dust or vapors.

This machine is suitable for commercial use, for example in hotels, schools, hospitals, factories, shops and offices for more than normal housekeeping purposes.

Maintenance and repairs **must be done** by qualified personnel.

Disconnect battery before cleaning or servicing.

Before the machine is discarded, the batteries **must be removed** and properly disposed of.

During operation, attention shall be paid to other persons, especially children.

Before use all covers and doors shall be put in the positions specified in the instructions.

When leaving unattended, secure against unintentional movement.

The machine shall only be operated by instructed and authorized persons.

When leaving unattended, switch off or lock the main power switch to prevent unauthorized use.

This appliance has been designed for use with the brushes specified by the manufacturer. The fitting of other brushes may affect its safety.

Do not use on surfaces having a gradient exceeding 2% unless the optional parking brake is installed on the machine. **Do not** leave unattended on such surface. Go slow on inclines and slippery surfaces.

Do not use the machine to soak up liquid, toxic substances, or bio-hazardous materials.

Do not use a jet of water in order to wash the machine.

Do not use the machine to sweep up cables, straps, wires, or similar materials.

SAVE THESE INSTRUCTIONS

HAZARD INTENSITY LEVEL

The following symbols are used throughout this guide as indicated in their descriptions:

HAZARD INTENSITY LEVEL

There are three levels of hazard intensity identified by signal words -**WARNING** and **CAUTION** and **FOR SAFETY**. The level of hazard intensity is determined by the following definitions:

⚠ WARNING

WARNING - Hazards or unsafe practices which COULD result in severe personal injury or death.

⚠ CAUTION

CAUTION - Hazards or unsafe practices which could result in minor personal injury or product or property damage.

FOR SAFETY: To identify actions which must be followed for safe operation or equipment.

Report machine damage or faulty operation immediately. Do not use the machine if it is not in proper operating condition. Following is information that signals some potentially dangerous conditions to the operator or the equipment. Read this information carefully. Know when these conditions can exist. Locate all safety devices on the machine. Please take the necessary steps to train the machine operating personnel.

FOR SAFETY

DO NOT OPERATE MACHINE:

Unless Trained and Authorized.

Unless Operation Guide is Read and understood.

In Flammable or Explosive areas.

In areas with possible falling objects.

WHEN SERVICING MACHINE:

Avoid moving parts. Do not wear loose clothing; jackets, shirts, or sleeves when working on the machine. Use manufacturer approved replacement parts.

⚠ WARNING

Batteries emit hydrogen gas. Explosion or fire can result. Keep sparks and open flame away. Keep solution tank in raised position when charging. Keep sparks and flames away from the batteries. Do not smoke around batteries.

⚠ WARNING

Disconnect batteries before working on machine. Only qualified personnel should work inside machine. Always wear eye protection and protective clothing when working on or near batteries. Avoid skin contact with the acid contained in the batteries.

⚠ WARNING

Never allow metal to lie across battery tops.

SECURITY WARNING

IMPORTANT:

The Manufacturer cannot and will not be held responsible for damage in the event the machine is used for purposes other than those it was designed for. The machine **must never be** tampered with for any reason whatsoever; In this event, the manufacturer will void all warranties and will accept **NO** responsibility for improper use or damage to the machine.

The machine, composed of a brush and a suction system, is to be used **EXCLUSIVELY** to clean **DRY** surfaces. It is designed to pick up dirt, dry debris and dust from dry hard floor or carpeted surfaces of an indoor environment. Any other use could cause damage to people and/or property and is therefore **PROHIBITED**.

FOREWARD:

The purpose of this manual is to inform the operator of the basic rules, safety rules and criteria which must be observed when using, adjusting and maintaining the machine. The machine has been developed and manufactured to ensure an excellent performance and the utmost comfort and ease of operation in a variety of working conditions. Before delivery, the machine has been checked at our factory and by our dealer to make sure it is handed over to you in perfect working order. To maintain the machine in this condition and ensure problem free operation, it is essential to follow the routine maintenance instructions given in this manual.

OPERATIONS

UNPACKING THE MACHINE

Unpack the machine with the utmost care; avoid carrying out any operation that could damage your unit. Avoid movements that may cause damage.

Once it has been unpacked, check for damage of any visible component. If you notice damage, **DO NOT** operate your machine and contact your dealer immediately.

For packaging and transport purposes, some parts and accessories are supplied disconnected from the machine. To assemble them, carefully follow the instructions given in following sections.

Contents of package:

- Machine
- Side Brush
- Manual
- Maintenance free type battery
- 4mm hex wrench
- 20 amp spare fuse
- Charger cord
- Warranty Registration

NOTE: In the case one of the above mentioned items is missing, please inform your dealer immediately for replacement.

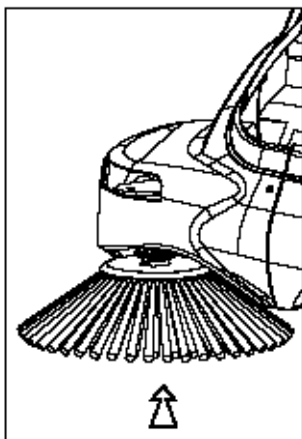
CAUTION

Take care to keep packaging materials (bags, cartons, pallets, hooks, etc) **out of reach of children**.

PREPARING THE MACHINE FOR OPERATION

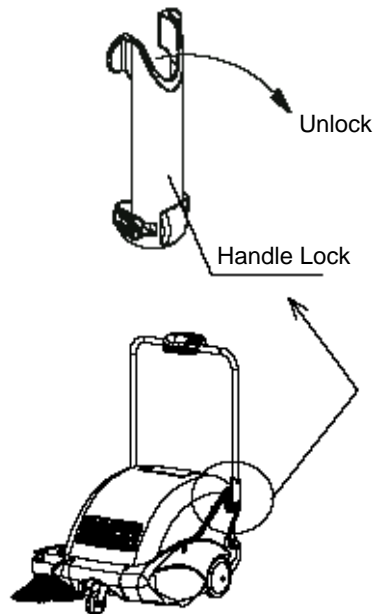
Side Brush Assembly:

1. Raise the front part of the machine, slide the brush on to the shaft until it locks into place.



Handle Assembly:

1. Release handle locks as shown.
2. Rotate handle into working height position.
3. Return handle lock to the locking position.



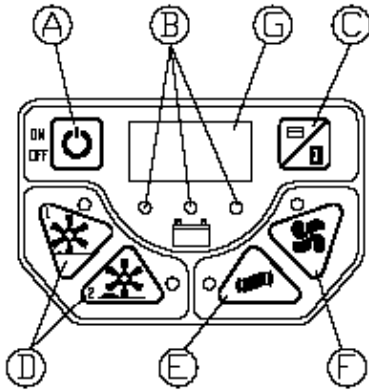
Connecting the Battery:

1. Remove the top cover to gain access to the battery using the 4mm hex wrench, provided.
2. Locate the two Red/Black connectors.
3. Align the colors of the connectors.
4. Plug the two connectors together.

NOTE: Wait for the charge indicator light to be GREEN. This indicates a full charge.

CONTROL PANEL

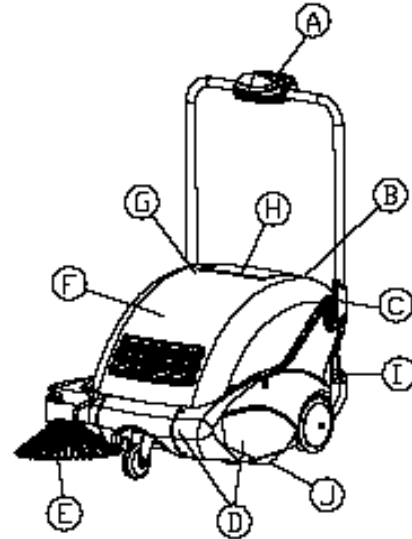
The machine is equipped with a simple panel control that controls all the operational functions of the machine.



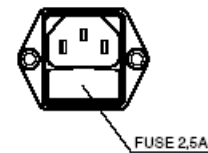
- A. **Main Switch:** Turns the machine on and off.
- B. **Battery Charge Indicator:** Series of LED's that illuminate to show battery charge level. Green for when the machine is charged. Red for when machine is discharged. Yellow for when machine charge is in reserve or being charged.
- C. **Display Switch:** Pressing the switch once will display the working hours of the machine. Pressing the switch twice will display the working minutes of the machine.
- D. **Sweeping Mode Switch:** These two switches allow the machine to work with two separate sweeping modes. Mode 1 for light debris and mode 2 for heavy debris.
- E. **Filter Shaker Switch (manual):** This manual lever gives the possibility in shaking the filter at any time during work. This is in addition to the automatic filter shaking that cycles every 3 minutes.
- F. **Vacuum Fan Switch:** The vacuum fan automatically activates when sweeping mode is on. Therefore the switch is used when the requirements are to switch off the vacuum fan during sweeping mode.
- G. **Numeric Display**

COMPONENTS

- A. **Control Panel**
- B. **Charger Fuse (2.5amps)**
- C. **Handle Locks**
- D. **Bumper**
- E. **Side Brush**
- F. **Top Cover**
- G. **Warning Label**
- H. **Charger Cord Compartment**
- I. **Hopper**
- J. **Brush**



Charger Fuse



TIPS FOR OPERATION

After you have become acquainted with the start up procedure, the following are tips to ensure the best results from your sweeper. These tips will also help reduce damage to your machine.

- DO NOT use the machine to clean up wires, ropes or straps.
- DO NOT use the machine to soak up or clean up liquids of any kind.
- When using the machine on light but bulky material (sheets of paper, leaves, etc.), raise the front part of the machine by pressing down the handlebar so that the machine may tackle the debris easier.
- Operate the filter shaker, during and at the end of your work session.

NOTE: This machine is not intended for wet surface sweeping. However, if you encounter a slightly damp environment (moisture build up on the floor), it is required that you turn the vacuum fan switch OFF to prevent filter damage. Machine damage due to wet debris pickup is not covered under warranty.

NOTE: If the sweeper is lying inactive for a period longer than one month you must disconnect the red and black battery clips. If the sweeper is lying inactive for a period longer than one week you should leave it connected to the electrical outlet.

OPERATIONS

TECHNICAL SPECIFICATIONS

Description		
Width – including side brush	600mm	23.75"
Length – including side brush	730mm	28.75"
Height – including handle	950mm	37.5"
Machine height (handle folded)	559mm	22"
Maximum sweeping width	650mm	25"
Weight	53kg	115 lbs
Hopper Capacity (real)	9.3 Lt.	1.25 cu.ft.
Run Time	2 hours	
Filtering Surface	0.95mq	10 sq. ft.
Productivity Rate – Theoretical	1800mq/h	18000sq. ft.
Productivity Rate – Estimated	900mq/h	9000 sq.ft.
Total Power consumption	360W/18A	360W/18A
Type of Battery	Sealed maintenance free	
Noise Level	61dba	

USE OF ON-BOARD BATTERY CHARGER

When the battery on the machine is discharged, the RED led on the control panel illuminates and all functions of the machine will automatically stop. The operator must then turn off the machine and start the charging procedure.

1. Connect the machine battery charger plug into an AC electrical outlet. **NOTE:** During charging the **YELLOW** led on the display will be lit.
2. When the machine is fully charged the green led will be lit. The battery charger plug can be disconnected and the machine is ready for operation.

IMPORTANT NOTE: Using the machine before the battery has fully charged and a green light has displayed, will reduce the life and run time of your battery and VOID the warranty.

The on board charger is specifically designed for sealed batteries.

STARTING THE MACHINE

Attention: The machine must be used only by authorized personal. **DO NOT ABANDON** the machine when the running, **DO NOT** use the machine for collecting liquid. Before leaving machine, always turn the power **OFF**.

To start the machine use the following procedure:

1. Press the main ON/OFF button.
2. Check that the green led is lit indicating a proper battery charge level.
3. Select the appropriate sweeping mode switch. NOTE: Using mode 2 will reduce the maximum machine run time.

WASTE HOPPER EMPTYING AND CLEANING

Before cleaning of waster bins, make sure the machine is OFF and all pertinent parts are removed from the machine.



Wastes must be disposed of strictly in accordance to local, state or governing law in your area.

1. Release the hopper clamp by lifting and then pushing on the back of the clamp.
2. Pull out the hopper by its handle.
3. Empty the hopper.
4. Slide the hopper back into place.
5. Lower and press the hopper clamp to lock into place.

NOTE: It is recommended to clean the pre-filter daily. See section on cleaning and servicing the filter.

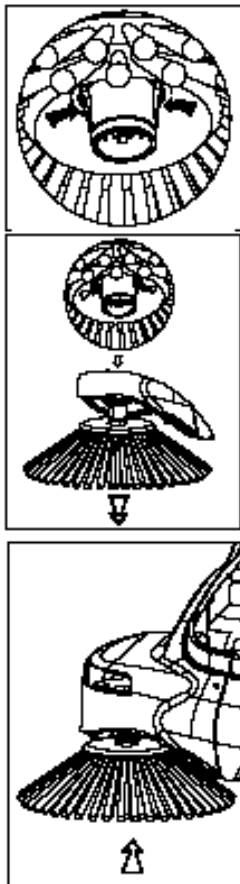
MACHINE MAINTENANCE

All service performed should be completed by persons who understand the machine or an Authorized Service Center. It is recommended that only Authorized repair parts be used for service.

FOR SAFETY: When servicing the machine disconnect the battery connection and battery charger plug before working on the machine.

SIDE BRUSH REPLACEMENT

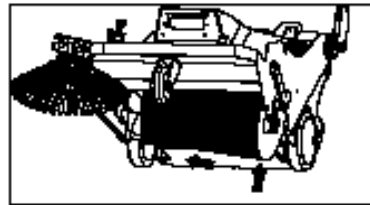
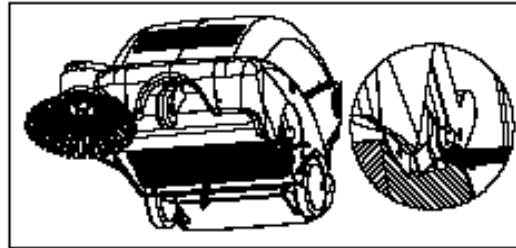
1. Raise the front part of the machine.
2. Press in the 2 tabs (indicated by arrows) and pull off the brushes.
3. Slide the new brushes until it locks into place.



MAIN BRUSH REPLACEMENT

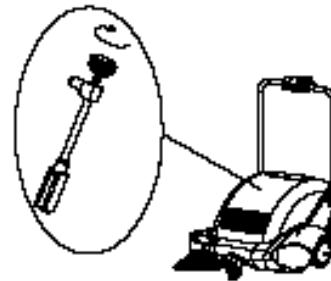
1. Tilt the machine backwards until the handle is touching the ground and the main brush is easily reached.
2. Manually turn the brush until a black button is seen on the right hand side of the brush core.
3. Press the button and push to disengage the brush.

4. Insert the new brush following the guide.



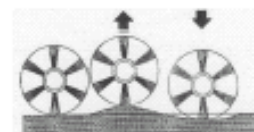
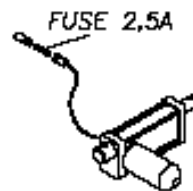
ADJUSTING THE SIDE BRUSH

1. Remove the top cover.
2. Turn adjusting handle in the direction required.



ACTUATOR FUNCTION

The system allows the brush to immediately and constantly follow all types of surfaces. Self adjust to surfaces and self adjust for main/side brush wear through out the life of the brushes.



MAINTENANCE

FILTER MAINTENANCE

The filter is one of the machine main components. It is essential for the best results from your machine. If you notice that dust forms when the machine is at work, check the filter.

Pre-Filter (Clean Daily):

1. Remove the debris hopper to access the pre-filter.
2. Release the two metal retaining clip arms that secure the pre-filter in place. Hinge the retaining clip arms outward and remove the pre-filter.
3. Shake the pre-filter into a debris receptacle.
4. Replace the pre-filter and secure with retainer clips.

Main filter:

The main filter can be cleaned in any of the following three ways.

1. By means of the automatic filter shaker;

During operation, the machine will automatically activate the filter shaker every 3 minutes.

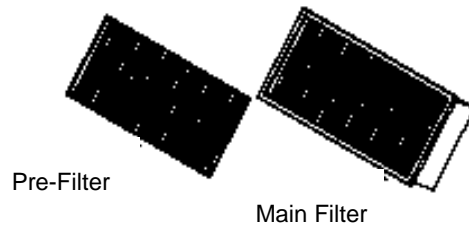
2. By mean of manually activating the filter shaker;

Just a simple command is needed to keep the filter in perfect working order. Press the button marked 'E' and hold it down for a few seconds. Repeat this operation 4 to 5 times. Remember the cleaner the filter, the better the results of your cleaning session. It is recommended to carry this operation out at the end of each work cycle.

NOTE: It is a good idea to use the manual filter shaker more frequently when using machine in dust environments.

3. By manually cleaning the filter.

Manually clean the filter when the filter shaker is not enough to keep the filter clean and/or every 20 hours of work. Before carrying out any kind of procedure on the machine, make sure it is turned off and that all functions are deactivated.



- 1) Remove the rear hopper.
- 2) Take the filter out.
- 3) Blow compressed air into the side of the filter (at pressure of 87psi at the most) Safety glasses required.
- 4) Reinstall the filters and the rear hopper.

PROGRAMMING

Your machine is factory programmed for optimum performance. It does not require further programming. However, if you encounter one of the following codes: **P1.X**, **P2.X** or **SF.X** (X= a value from 0 to 9), use the following programming instructions to reset your display. Operating the machine in a setting other than the factory setting may cause the machine to fail. Machine damage due to improper programming will **VOID** your warranty.

Programming Instructions:

If your display reads P1.0, P2.1 or SF.3 simply turn the main power off and back on again to reset display (these are the factory programmed settings)

If your display reads a value greater than stated above (ex. P1.5, P2.7, SF.9) continue to follow the instructions as described below.

To reprogram the machine to factory settings, turn the main power ON and press and hold the display switch button (Battery/Time Symbols) down for at least 3 seconds. P1.x will appear on the display. The P1 value should read "0" (ex. P1.0). If the value is greater than "0", press the vacuum fan button until the display reads P1.0. Press the display switch button again to advance to the next code. The P2.X value should read "1" (ex. P2.1). Press the vacuum fan button to properly set. Press the display switch one more time to advance to the last code. This code should read SF.3. If the value is not "3", press the filter shaker button until the display reads SF.3. To exit the programming mode, turn the machine OFF.

⚠ CAUTION

All routine and special maintenance must be carried out by authorized personnel or service center. Always use manufactures spare parts.

⚠ WARNING

Before performing any maintenance on machine, be sure power is OFF and batteries are disconnected.

SERVICE SCHEDULE

Items to Check	On Delivery	Daily	Every 10 hours	Every 20 Hours	Every 50 hours	Every 100 hours
Belts for slackening						X
Tightness of fasteners					X	
Brushes for wear and tear					X	
Gaskets for wear and leakage			X			
All functions are in working order	X	X	X	X	X	X
Empty hopper		X				
Remove and shake pre-filter		X				
Check Main filter				X		

CONTROL PANEL DISPLAY CODES

SAFETY CODE	Cause	Action to take
C22	Short circuit brush protection: stops all function	Reset by turning OFF the machine and starting again
C14	Dissipater at high temperature. Activates if temperature is over 194° F	The machine resets when the temperature lowers under 176° F
FS0	Worn Brushes	Replace Brush
Yellow LED lit	Battery in reserve	Machine continues to work. Only a warning that the battery is near discharge
RED led flashes	Battery discharged	Machine stops all functions. Turn off machine and charge the battery
P1.X	Sweeping mode 1 button programming activated	See programming
P2.X	Sweeping mode 2 button programming activated	See programming
SF.X	Filter Shaker program setting activated	See programming

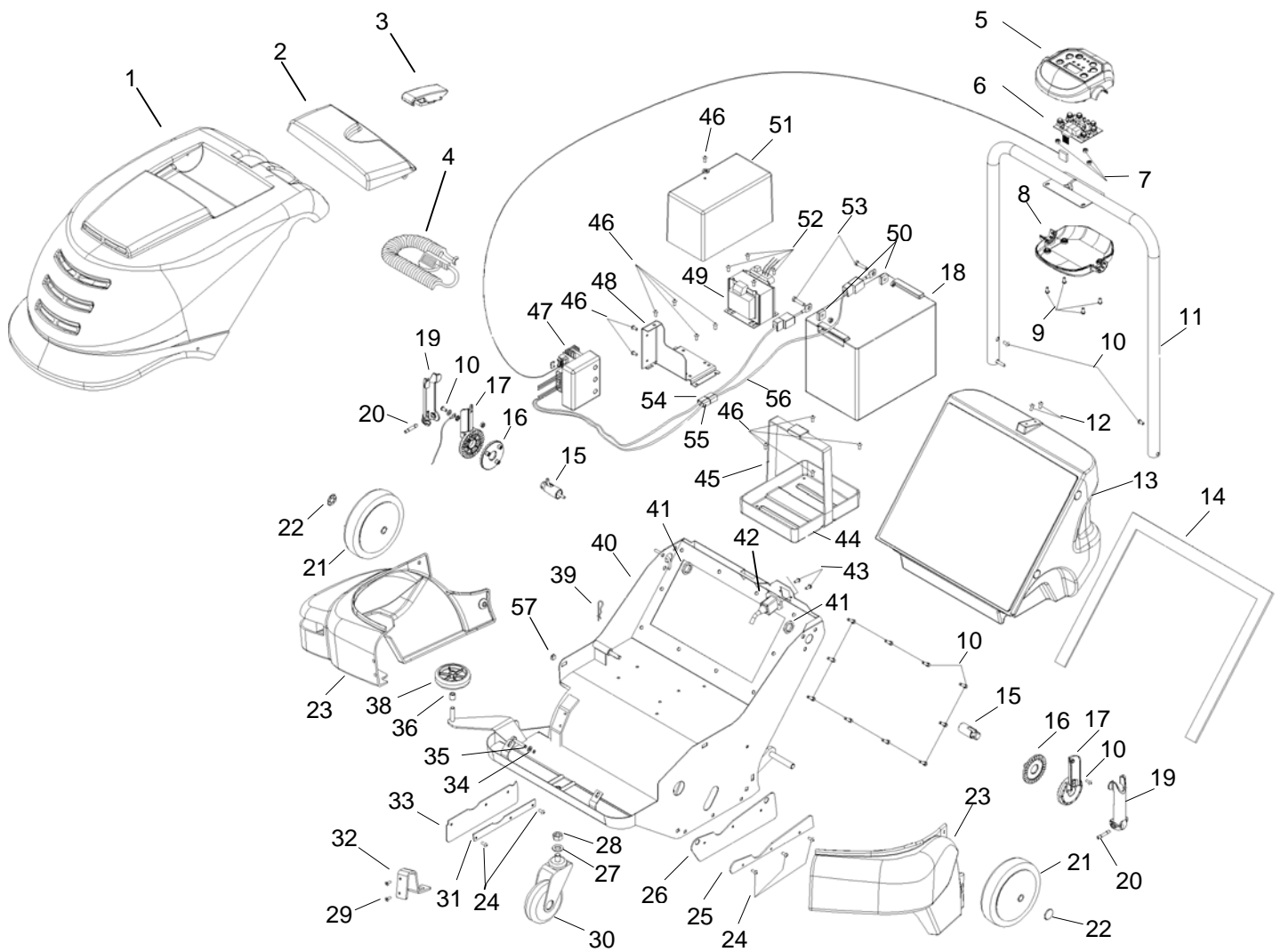
SCRAPPING THE MACHINE

In the event the machine must be scrapped, please remember that batteries are **NOT** common waste material. They must be disposed of in accordance with relevant laws.

The machine is composed different parts. Dismantle it and prepare the wastes for disposal in accordance to their type or class.

DO NOT USE THE SCRAP PIECES AS SPARE PARTS. KEEP SCRAPS OUT OF REACH OF CHILDREN.

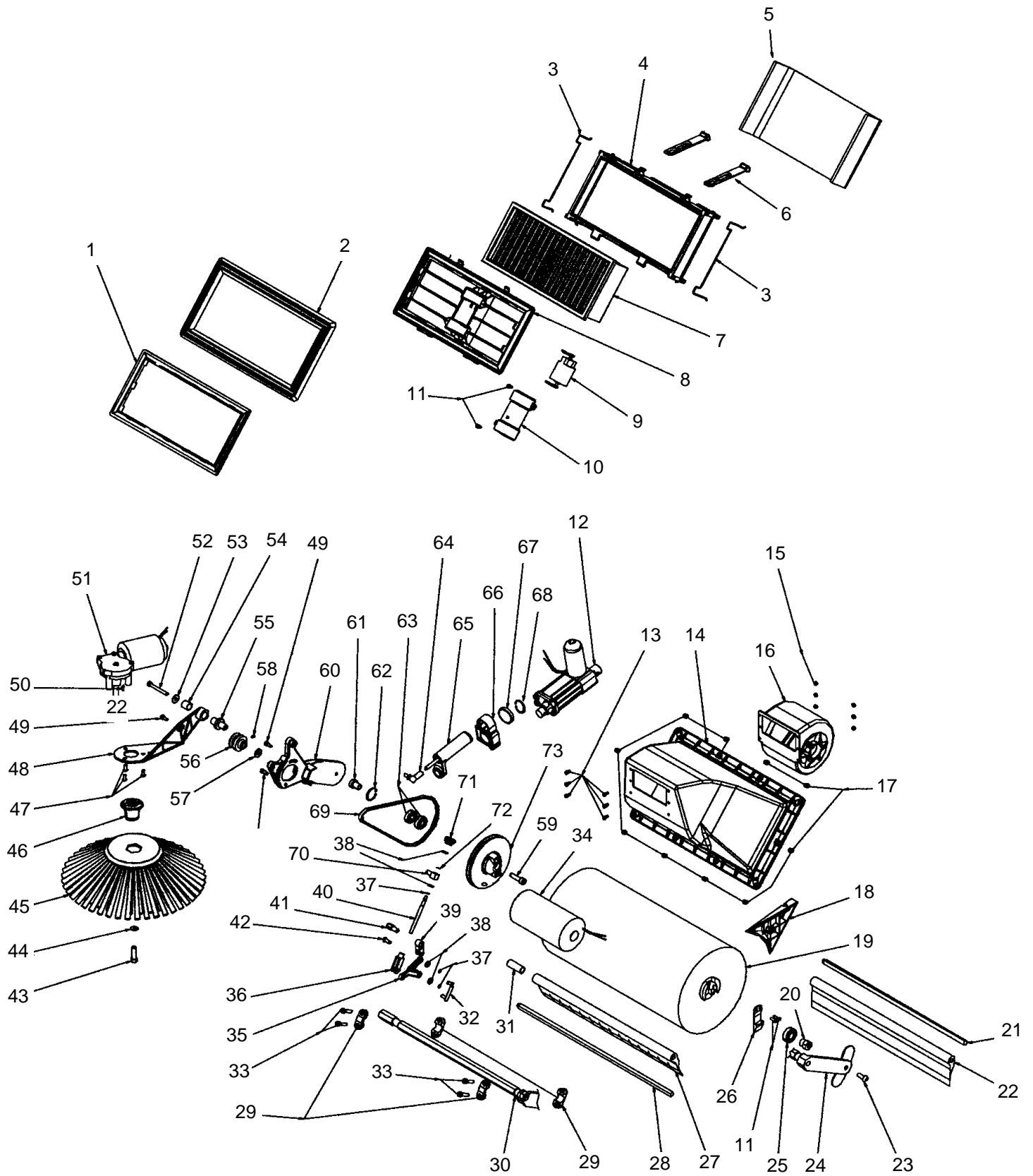
CHASSIS GROUP



CHASSIS GROUP

REF	PART NO.	PRV NO.	QTY	DESCRIPTION	SERIAL NO. FROM	NOTES:
1	86234660	1500345	1	COVER, BLUE		
2	86235290	1500346	1	DOOR, BLUE		
3	86246100	1500351	1	LATCH, HOPPER		
4	86234080	1500368	1	CORD, CHARGING 120V		
5	86248550	1500347	1	PANEL, TOUCH HOUSING TOP		
6	86233970	1500356	1	CONTROL TOUCH BOARD		
7	86247820	1500184	3	NUT, M4		
8	86240840	1500348	1	HOUSING, CONTROL BOTTOM		
9	86252880	1500138	4	SCREW, 5X10		
10	86252960	1500375	20	SCREW, 5X15		
11	86238690	1500342	1	HANDLE, TUBE W/GRIP		
12	86252650	1500376	2	SCREW, 5X20		
13	86239710	1500344	1	HOPPER		
14	86237010	1500369	1	GASKET, HOPPER		
15	86248770	1500339	2	PIN, HANDLE ROTATION		
16	86248320	1500341	2	PAD, SERRATED HANDLE LOCK		
17	86233050	1500340	2	CLAMP, SERRATED HANDLE LOCK		
18	86228520	1500371	1	BATTERY, 12V 42AH, MAINT FREE		
19	86246290	1500343	2	LEVER, LOCK HANDLE		
20	86248780	1500352	2	PIN, LEVER HANDLE		
21	86259600	1500354	2	WHEEL, REAR RWB24		
22	86233460	1500353	2	CLIP		
23	86309260	-	1	PANEL SET, RWB241		
24	86252930	1500182	6	SCREW, 4X16, UNI9707		
25	86249230	1500358	1	PLATE, SKIRT LEFT SIDE		
26	86253830	1500359	1	SKIRT, LEFT SIDE		
27	86259230	1500265	1	WASHER, 15X24, UNI6592		
28	86229850	1500102	1	BLOCK NUT M12		
29	86252610	1500233	3	SCREW, 6X16, ISO 7380		
30	86232510	1500355	1	CASTER, FRONT RWB24		
31	86249240	1500367	1	PLATE, SKIRT RIGHT SIDE		
32	86246100	1500351	1	LATCH, HOPPER		
33	86253840	1500366	1	SKIRT, RIGHT SIDE		
34	86251670	1500449	1	RING, RETAINING		
35	86259170	1500032	1	WASHER, 6X12		
36	86254210	1500370	1	SPACER		
37	OPEN	-	-	-		
38	86259580	1500262	1	WHEEL, BUMPER		
39	86248790	1500362	1	PIN, ACTUATOR		
40	86236620	1500357	1	FRAME, RWB24		
41	86247830	1500377	2	NUT		
42	86250100	1500510	1	PLUG		
43	86252660	1500378	2	SCREW, 3 X 8 UNI 5933		
44	86257810	1500360	1	TRAY, BATTERY		
45	86228480	1500201	1	BATTERY BELT		
46	86252860	1500129	8	SCREW, 4X12		
47	86233980	1500365	1	CONTROL BOARD		
48	86230000	1500363	1	BRACKET, ELECTRONICS		
49	86257770	1500364	1	TRANSFORMER		
50	86247780	1500022	2	NUT, M6		
51	86234670	1500361	1	COVER, ELECTRONICS		
52	86252630	1500373	4	SCREW, 4X16 UNI 7687		
53	86252640	1500374	2	SCREW, 6X18 UNI 5739		
54	86233720	1500511	1	CONNECTOR, PP75 BLK		
55	86233730	1500512	1	CONNECTOR, PP75 RED		
56	86231520	1500513	1	CABLE, BATTERY		
57	86247880	1500450	4	NUT, M6		

BRUSH/FILTER GROUP



BRUSH/FILTER GROUP

REF	PART NO.	PRV NO.	QTY	DESCRIPTION	SERIAL NO. FROM	NOTES:
1	86249250	1500388	1	PLATE, FRAME FILTER		
2	86237020	1500406	1	GASKET, FILTER		
3	86251510	1500400	2	RETAINER, FILTER FRAME		
4	86236630	1500389	1	FRAME, FILTER		
5	86235930	1500404	1	FILTER, PRE-FILTER		
6	86246110	1500447	2	LATCH, FILTER RUBBER		
7	86235920	1500401	1	FILTER. PAPER FLUTED		
8	86236640	1500407	1	FRAME, SHAKER		
9	86247040	1500399	1	MOTOR, SHAKER		
10	86234680	1500415	1	COVER, SHAKER MOTOR		
11	86252670	1500437	4	SCREW, 3.9 X 13 UNI 6954		
12	86227030	1500387	1	ACTUATOR		
13	86252860	1500129	6	SCREW, 4X12		
14	86240850	1500390	1	HOUSING, BLOWER		
15	86247870	1500440	6	NUT, M4 DIN 985		
16	86229930	1500408	1	BLOWER, FAN MOTOR		
17	86247860	1500439	10	NUT, M5 DIN 985		
18	86234070	1500419	1	CONVEYOR		
19	86230950	1500420	1	BRUSH, MAIN W/LKNG RTNR		
20	86248830	1500413	1	PIN, MAIN BRUSH		
21	86248820	1500403	1	PIN, HOLDER REAR SKIRT		
22	86253860	1500411	1	SKIRT, REAR		
23	86252750	1500014	1	SCREW, 8X16		
24	86227420	1500509	1	ARM, MAIN BRUSH		
25	86229180	1500436	1	BEARING, 6002RS		
26	86251500	1500391	1	RETAINER, LOCKING MAIN BRUSH		
27	86253850	1500410	1	SKIRT, FRONT		
28	86248810	1500402	1	PIN, HOLDER FRONT SKIRT		
29	86256550	1500398	2	SUPPORT, SHAFT MAIN BRUSH DRIVE		
30	86253210	1500384	1	SHAFT, MAIN BRUSH DRIVE		
31	86254220	1500397	1	SPACER, SKIRT		
32	86227340	1500433	1	ARM		
33	86252970	1500435	4	SCREW, 6 X 20 UNI 5931		
34	86247050	1500421	1	MOTOR, MAIN BRUSH		
35	86227390	1500392	1	ARM, DRIVING SIDE BRUSH		
36	86246640	1500434	1	LINK		
37	86254110	1500372	3	SNAP RING, UNI 7435		
38	86257170	1500032	4	WASHER, 6X12		
39	86251850	1500396	1	ROD, CONNECTING		
40	86251840	1500385	1	ROD, ADJUSTER		
41	86248800	1500395	1	PIN, ARM DRIVING		
42	86248760	1500394	1	PIN		
43	86252840	1500183	1	SCREW, 4X16		
44	86259240	1500426	1	WASHER, D.4X16		
45	86230940	1500405	1	BRUSH, SIDE		
46	86241060	1500393	1	HUB, SIDE BRUSH DRIVE		
47	86252890	1500141	1	SCREW, 6 X 16		
48	86227400	1500414	1	ARM, BRUSH SIDE		
49	86252700	1500448	4	SCREW, 5 X 12		
50	86241810	1500084	1	KEY, 3 X 3.7		
51	86247060	1500425	1	MOTOR, SIDE BRUSH		
52	86252680	1500438	1	SCREW, 6 X 50 UNI 5931		
53	86259150	1500006	1	WASHER, 6 X 24 X 2		

BRUSH/FILTER GROUP (cont.)

REF	PART NO.	PRV NO.	QTY	DESCRIPTION	SERIAL NO. FROM	NOTES:
54	86231460	1500427	1	BUSHING		
55	86248850	1500423	1	PIN, ROTATION		
56	86250390	1500412	1	PULLEY		
57	86254230	1500443	1	SPACER		
58	86253190	1500444	1	SET SCREW, 4X8		
59	86252690	1500441	1	SCREW, 8 X 35 UNI 5931		
60	86227410	1500418	1	ARM, MAIN BRUSH		
61	86248840	1500422	1	PIN, PULLEY		
62	86251650	1500430	1	RING, SNAP		
63	86229170	1500429	2	BEARING, 6001-2RS1-SKF		
64	86227930	1500432	1	BALL JOINT		
65	86238610	1500386	1	GUIDE, ACTUATOR		
66	86254870	1500416	1	SPRING, GUIDE		
67	86254240	1500445	1	SPACER		
68	86251660	1500446	1	RING, SNAP		
69	86229530	1500431	1	BELT, BRUSH		
70	86241760	1500424	1	JOINT, ADJUSTOR		
71	86241960	1500428	1	KNOB		
72	86248060	1500442	1	O-RING		
73	86250400	1500417	1	PULLEY		

WIRING DIAGRAM

